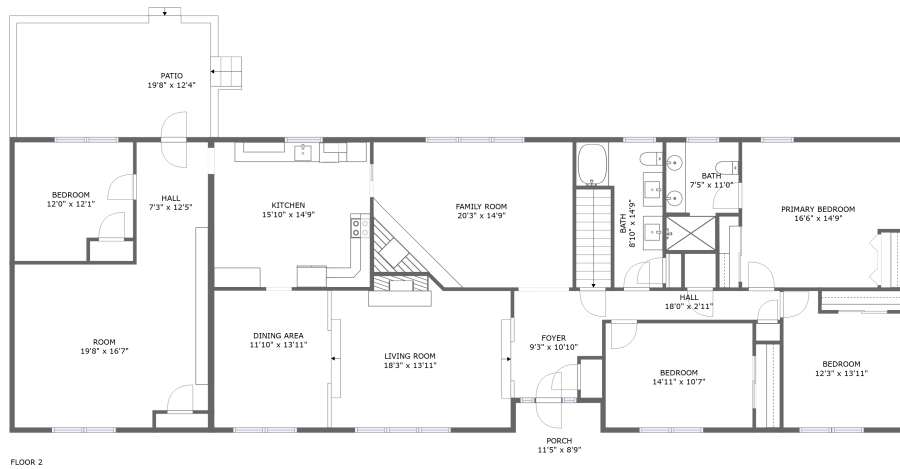
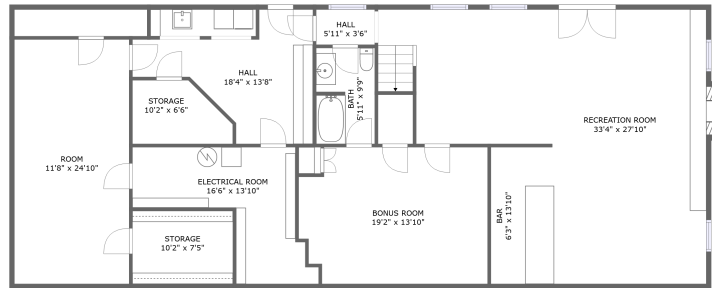


# 2022 Cattle Lane, Sugar Loaf Estates, Cave Spring, Roanoke, Roanoke County, Virginia, United States,




FLOOR 2



FLOOR 1

## Property summary


 **0** Garages

 **4** Bedrooms

 **3** Bathrooms

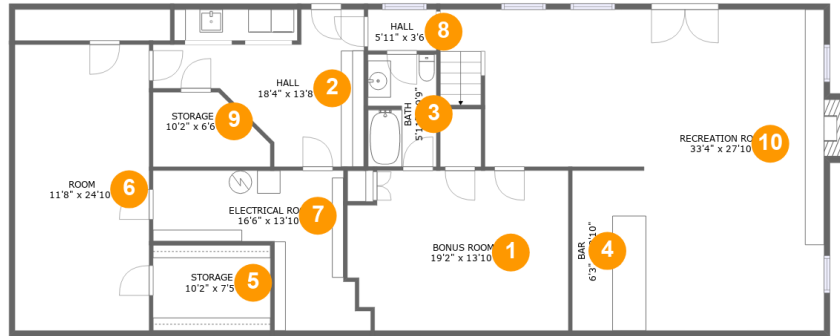
 **0** Half baths

 **2** Floors

 **4,379** Gross living area sqft

 **5,083** Total sqft

# 2022 Cattle Lane, Sugar Loaf Estates, Cave Spring, Roanoke, Roanoke County, Virginia, United States,



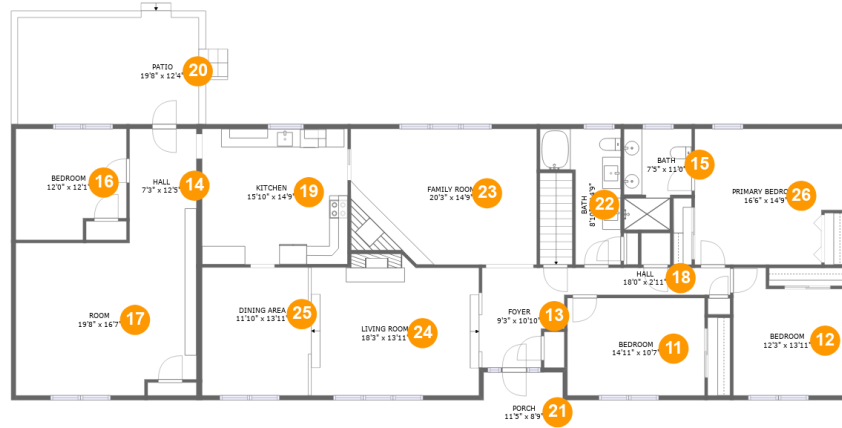
## Room dimensions

Floor 1

Total sqft: 2064 Living area: 1669

#		Dimensions	sqft	Counted as living area
1	Bonus Room	19'2" x 13'10"	251 sq. ft	Yes
2	Hall	18'4" x 13'8"	150 sq. ft	Yes
3	Bath	5'11" x 9'9"	57 sq. ft	Yes
4	Bar	6'3" x 13'10"	86 sq. ft	Yes
5	Storage	10'2" x 7'5"	76 sq. ft	No
6	Room	11'8" x 24'10"	289 sq. ft	Yes
7	Electrical Room	16'6" x 13'10"	154 sq. ft	No
8	Hall	5'11" x 3'6"	21 sq. ft	Yes
9	Storage	10'2" x 6'6"	56 sq. ft	No
10	Recreation Room	33'4" x 27'10"	663 sq. ft	Yes

# 2022 Cattle Lane, Sugar Loaf Estates, Cave Spring, Roanoke, Roanoke County, Virginia, United States,



## Room dimensions

Floor 2

Total sqft: 3019 Living area: 2710

#		Dimensions	sqft	Counted as living area
11	Bedroom	14'11" x 10'7"	158 sq. ft	Yes
12	Bedroom	12'3" x 13'11"	150 sq. ft	Yes
13	Foyer	9'3" x 10'10"	89 sq. ft	Yes
14	Hall	7'3" x 12'5"	90 sq. ft	Yes
15	Bath	7'5" x 11'0"	71 sq. ft	Yes
16	Bedroom	12'0" x 12'1"	134 sq. ft	Yes
17	Room	19'8" x 16'7"	316 sq. ft	Yes
18	Hall	18'0" x 2'11"	53 sq. ft	Yes
19	Kitchen	15'10" x 14'9"	233 sq. ft	Yes
20	Patio	19'8" x 12'4"	231 sq. ft	No
21	Porch	11'5" x 8'9"	78 sq. ft	No

**2022 Cattle Lane, Sugar Loaf Estates, Cave Spring,  
Roanoke, Roanoke County, Virginia, United States,**

#		Dimensions	sqft	Counted as living area
22	Bath	8'10" x 14'9"	90 sq. ft	Yes
23	Family Room	20'3" x 14'9"	289 sq. ft	Yes
24	Living Room	18'3" x 13'11"	263 sq. ft	Yes
25	Dining Area	11'10" x 13'11"	165 sq. ft	Yes
26	Primary Bedroom	16'6" x 14'9"	227 sq. ft	Yes

# 2022 Cattle Lane, Sugar Loaf Estates, Cave Spring, Roanoke, Roanoke County, Virginia, United States,

## 1 Floor 1 - Bonus Room



Dimensions: 19'2" x 13'10"  
Area: 251 sq. ft  
Counted as living area: Yes

Heated: Yes  
Finished: Yes  
Enclosed: Yes  
Contiguous: Yes  
Permitted: Yes  
Wet space: No  
Addition: No  
Conversion: No

## 2 Floor 1 - Hall

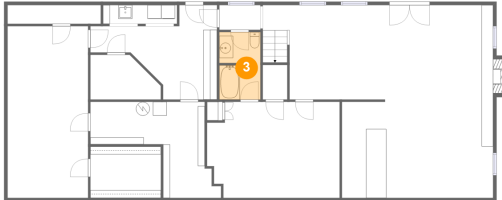


Dimensions: 18'4" x 13'8"  
Area: 150 sq. ft  
Counted as living area: Yes

Heated: Yes  
Finished: Yes  
Enclosed: Yes  
Contiguous: Yes  
Permitted: Yes  
Wet space: No  
Addition: No  
Conversion: No

# 2022 Cattle Lane, Sugar Loaf Estates, Cave Spring, Roanoke, Roanoke County, Virginia, United States,

## 3 Floor 1 - Bath



Dimensions: 5'11" x 9'9"  
Area: 57 sq. ft  
Counted as living area: Yes

Heated: Yes  
Finished: Yes  
Enclosed: Yes  
Contiguous: Yes  
Permitted: Yes  
Wet space: Yes  
Addition: No  
Conversion: No

## 4 Floor 1 - Bar



Dimensions: 6'3" x 13'10"  
Area: 86 sq. ft  
Counted as living area: Yes

Heated: Yes  
Finished: Yes  
Enclosed: Yes  
Contiguous: Yes  
Permitted: Yes  
Wet space: No  
Addition: No  
Conversion: No

## 5 Floor 1 - Storage



Dimensions: 10'2" x 7'5"  
Area: 76 sq. ft  
Counted as living area: No

Heated: No  
Finished: No  
Enclosed: No  
Contiguous: Yes  
Permitted: Yes  
Wet space: No  
Addition: No  
Conversion: No

# 2022 Cattle Lane, Sugar Loaf Estates, Cave Spring, Roanoke, Roanoke County, Virginia, United States,

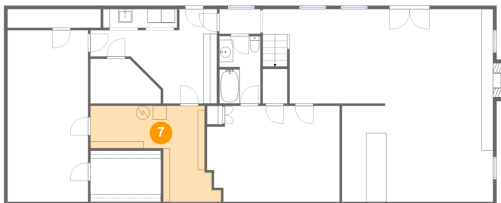
## 6 Floor 1 - Room



Dimensions: 11'8" x 24'10"  
Area: 289 sq. ft  
Counted as living area: Yes

Heated: Yes  
Finished: Yes  
Enclosed: Yes  
Contiguous: Yes  
Permitted: Yes  
Wet space: No  
Addition: No  
Conversion: No

## 7 Floor 1 - Electrical Room



Dimensions: 16'6" x 13'10"  
Area: 154 sq. ft  
Counted as living area: No

Heated: No  
Finished: No  
Enclosed: Yes  
Contiguous: Yes  
Permitted: Yes  
Wet space: No  
Addition: No  
Conversion: No

## 8 Floor 1 - Hall



Dimensions: 5'11" x 3'6"  
Area: 21 sq. ft  
Counted as living area: Yes

Heated: Yes  
Finished: Yes  
Enclosed: Yes  
Contiguous: Yes  
Permitted: Yes  
Wet space: No  
Addition: No  
Conversion: No

# 2022 Cattle Lane, Sugar Loaf Estates, Cave Spring, Roanoke, Roanoke County, Virginia, United States,

## 9 Floor 1 - Storage



Dimensions: 10'2" x 6'6"  
Area: 56 sq. ft  
Counted as living area: No

Heated: No  
Finished: No  
Enclosed: No  
Contiguous: No  
Permitted: Yes  
Wet space: No  
Addition: No  
Conversion: No

## 10 Floor 1 - Recreation Room



Dimensions: 33'4" x 27'10"  
Area: 663 sq. ft  
Counted as living area: Yes

Heated: Yes  
Finished: Yes  
Enclosed: Yes  
Contiguous: Yes  
Permitted: Yes  
Wet space: No  
Addition: No  
Conversion: No

## 11 Floor 2 - Bedroom



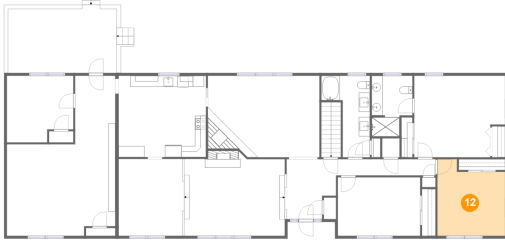
Dimensions: 14'11" x 10'7"  
Area: 158 sq. ft  
Counted as living area: Yes

Heated: Yes  
Finished: Yes  
Enclosed: Yes  
Contiguous: Yes  
Permitted: Yes  
Wet space: No  
Addition: No  
Conversion: No



# 2022 Cattle Lane, Sugar Loaf Estates, Cave Spring, Roanoke, Roanoke County, Virginia, United States,

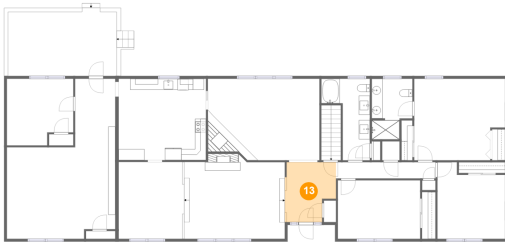
## 12 Floor 2 - Bedroom



Dimensions: 12'3" x 13'11"  
Area: 150 sq. ft  
Counted as living area: Yes

Heated: Yes  
Finished: Yes  
Enclosed: Yes  
Contiguous: Yes  
Permitted: Yes  
Wet space: No  
Addition: No  
Conversion: No

## 13 Floor 2 - Foyer



Dimensions: 9'3" x 10'10"  
Area: 89 sq. ft  
Counted as living area: Yes

Heated: Yes  
Finished: Yes  
Enclosed: Yes  
Contiguous: Yes  
Permitted: Yes  
Wet space: No  
Addition: No  
Conversion: No

## 14 Floor 2 - Hall



Dimensions: 7'3" x 12'5"  
Area: 90 sq. ft  
Counted as living area: Yes

Heated: Yes  
Finished: Yes  
Enclosed: Yes  
Contiguous: Yes  
Permitted: Yes  
Wet space: No  
Addition: No  
Conversion: No

# 2022 Cattle Lane, Sugar Loaf Estates, Cave Spring, Roanoke, Roanoke County, Virginia, United States,

## 15 Floor 2 - Bath



Dimensions: 7'5" x 11'0"  
Area: 71 sq. ft  
Counted as living area: Yes

Heated: Yes  
Finished: Yes  
Enclosed: Yes  
Contiguous: Yes  
Permitted: Yes  
Wet space: Yes  
Addition: No  
Conversion: No

## 16 Floor 2 - Bedroom



Dimensions: 12'0" x 12'1"  
Area: 134 sq. ft  
Counted as living area: Yes

Heated: Yes  
Finished: Yes  
Enclosed: Yes  
Contiguous: Yes  
Permitted: Yes  
Wet space: No  
Addition: No  
Conversion: No

## 17 Floor 2 - Room

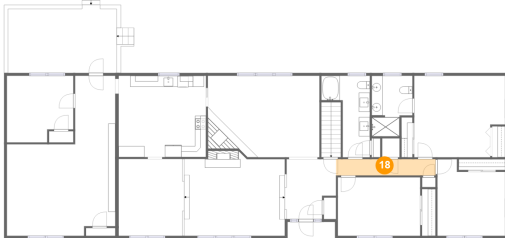


Dimensions: 19'8" x 16'7"  
Area: 316 sq. ft  
Counted as living area: Yes

Heated: Yes  
Finished: Yes  
Enclosed: Yes  
Contiguous: Yes  
Permitted: Yes  
Wet space: No  
Addition: No  
Conversion: No

# 2022 Cattle Lane, Sugar Loaf Estates, Cave Spring, Roanoke, Roanoke County, Virginia, United States,

## 18 Floor 2 - Hall



Dimensions: 18'0" x 2'11"  
Area: 53 sq. ft  
Counted as living area: Yes

Heated: Yes  
Finished: Yes  
Enclosed: Yes  
Contiguous: Yes  
Permitted: Yes  
Wet space: No  
Addition: No  
Conversion: No

## 19 Floor 2 - Kitchen



Dimensions: 15'10" x 14'9"  
Area: 233 sq. ft  
Counted as living area: Yes

Heated: Yes  
Finished: Yes  
Enclosed: Yes  
Contiguous: Yes  
Permitted: Yes  
Wet space: No  
Addition: No  
Conversion: No

## 20 Floor 2 - Patio



Dimensions: 19'8" x 12'4"  
Area: 231 sq. ft  
Counted as living area: No

Heated: No  
Finished: Yes  
Enclosed: No  
Contiguous: Yes  
Permitted: Yes  
Wet space: No  
Addition: No  
Conversion: No

# 2022 Cattle Lane, Sugar Loaf Estates, Cave Spring, Roanoke, Roanoke County, Virginia, United States,

## 21 Floor 2 - Porch



Dimensions: 11'5" x 8'9"  
Area: 78 sq. ft  
Counted as living area: No

Heated: No  
Finished: Yes  
Enclosed: No  
Contiguous: Yes  
Permitted: Yes  
Wet space: No  
Addition: No  
Conversion: No

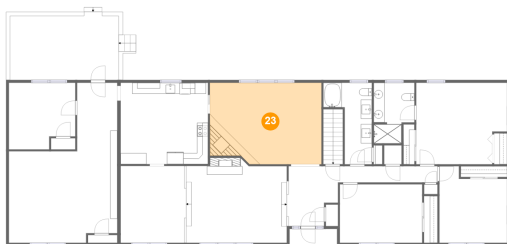
## 22 Floor 2 - Bath



Dimensions: 8'10" x 14'9"  
Area: 90 sq. ft  
Counted as living area: Yes

Heated: Yes  
Finished: Yes  
Enclosed: Yes  
Contiguous: Yes  
Permitted: Yes  
Wet space: Yes  
Addition: No  
Conversion: No

## 23 Floor 2 - Family Room



Dimensions: 20'3" x 14'9"  
Area: 289 sq. ft  
Counted as living area: Yes

Heated: Yes  
Finished: Yes  
Enclosed: Yes  
Contiguous: Yes  
Permitted: Yes  
Wet space: No  
Addition: No  
Conversion: No

# 2022 Cattle Lane, Sugar Loaf Estates, Cave Spring, Roanoke, Roanoke County, Virginia, United States,

## 24 Floor 2 - Living Room



Dimensions: 18'3" x 13'11"  
Area: 263 sq. ft  
Counted as living area: Yes

Heated: Yes  
Finished: Yes  
Enclosed: Yes  
Contiguous: Yes  
Permitted: Yes  
Wet space: No  
Addition: No  
Conversion: No

## 25 Floor 2 - Dining Area



Dimensions: 11'10" x 13'11"  
Area: 165 sq. ft  
Counted as living area: Yes

Heated: Yes  
Finished: Yes  
Enclosed: Yes  
Contiguous: Yes  
Permitted: Yes  
Wet space: No  
Addition: No  
Conversion: No

## 26 Floor 2 - Primary Bedroom



Dimensions: 16'6" x 14'9"  
Area: 227 sq. ft  
Counted as living area: Yes

Heated: Yes  
Finished: Yes  
Enclosed: Yes  
Contiguous: Yes  
Permitted: Yes  
Wet space: No  
Addition: No  
Conversion: No