



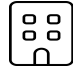




7527 Boxwood Drive, Roanoke, Roanoke County, Virginia, United States, 24018

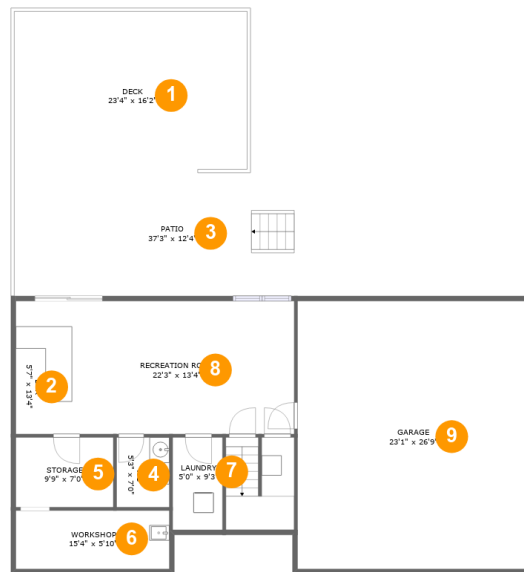


Property Summary

 **1** garages  **3** bedrooms  **2** bathrooms  **1** half baths

 **2** floors  **2,185** Gross Living Area sqft  **4,096** total sqft

7527 Boxwood Drive, Roanoke, Roanoke County, Virginia, United States, 24018



Room Dimensions

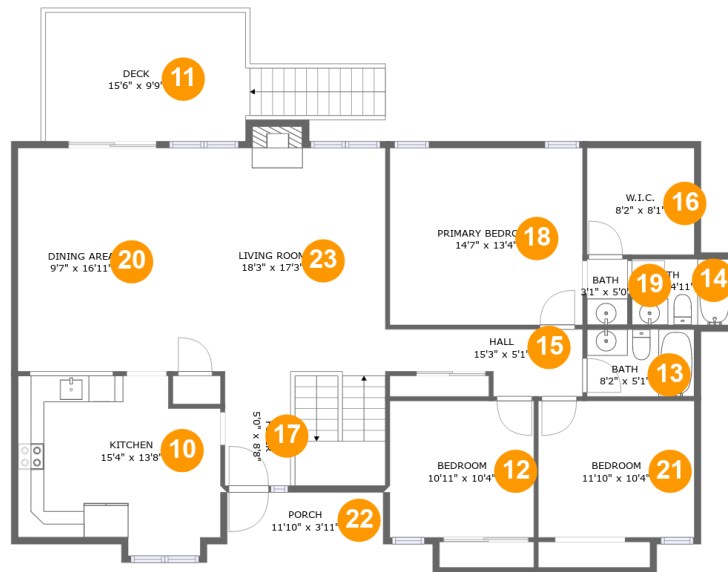
Floor 1

Total sqft: 2243

Living area: 572

#	Room name	Dimensions	Area (sqft)	Counted as Living Area
1	Deck	23'4" x 16'2"	377 sq. ft	No
2	Bar	5'7" x 13'4"	75 sq. ft	Yes
3	Patio	37'3" x 12'4"	459 sq. ft	No
4	Wc	5'3" x 7'0"	37 sq. ft	Yes
5	Storage	9'9" x 7'0"	68 sq. ft	No
6	Workshop	15'4" x 5'10"	90 sq. ft	No
7	Laundry	5'0" x 9'3"	46 sq. ft	Yes
8	Recreation Room	22'3" x 13'4"	296 sq. ft	Yes
9	Garage	23'1" x 26'9"	619 sq. ft	No

7527 Boxwood Drive, Roanoke, Roanoke County, Virginia, United States, 24018



Room Dimensions

Floor 2

Total sqft: 1853

Living area: 1613

#	Room name	Dimensions	Area (sqft)	Counted as Living Area
10	Kitchen	15'4" x 13'8"	188 sq. ft	Yes
11	Deck	15'6" x 9'9"	186 sq. ft	No
12	Bedroom	10'11" x 10'4"	113 sq. ft	Yes
13	Bath	8'2" x 5'1"	41 sq. ft	Yes
14	Bath	7'7" x 4'11"	38 sq. ft	Yes
15	Hall	15'3" x 5'1"	61 sq. ft	Yes
16	W.i.c.	8'2" x 8'1"	66 sq. ft	Yes
17	Foyer	5'0" x 8'8"	43 sq. ft	Yes
18	Primary Bedroom	14'7" x 13'4"	196 sq. ft	Yes
19	Bath	3'1" x 5'0"	15 sq. ft	Yes
20	Dining Area	9'7" x 16'11"	162 sq. ft	Yes

**7527 Boxwood Drive, Roanoke, Roanoke County,
Virginia, United States, 24018**

#	Room name	Dimensions	Area (sqft)	Counted as Living Area
21	Bedroom	11'10" x 10'4"	122 sq. ft	Yes
22	Porch	11'10" x 3'11"	46 sq. ft	No
23	Living Room	18'3" x 17'3"	378 sq. ft	Yes

7527 Boxwood Drive, Roanoke, Roanoke County, Virginia, United States, 24018

1 Floor 1 - Deck



Dimensions: 23'4" x 16'2"
Area: 377 sq. ft
Counted as Living Area: No

Heated: No
Finished: Yes
Enclosed: No
Contiguous: Yes
Permitted: Yes
Wet Space: No
Addition: No
Conversion: No

2 Floor 1 - Bar



Dimensions: 5'7" x 13'4"
Area: 75 sq. ft
Counted as Living Area:
Yes

Heated: Yes
Finished: Yes
Enclosed: Yes
Contiguous:
Yes
Permitted: Yes
Wet Space: No
Addition: No
Conversion: No

7527 Boxwood Drive, Roanoke, Roanoke County, Virginia, United States, 24018

3 Floor 1 - Patio



Dimensions: 37'3" x 12'4"
Area: 459 sq. ft
Counted as Living Area: No

Heated: No
Finished: Yes
Enclosed: No
Contiguous: Yes
Permitted: Yes
Wet Space: No
Addition: No
Conversion: No

4 Floor 1 - Wc



Dimensions: 5'3" x 7'0"
Area: 37 sq. ft
Counted as Living Area:
Yes

Heated: Yes
Finished: Yes
Enclosed: Yes
Contiguous:
Yes
Permitted: Yes
Wet Space: Yes
Addition: No
Conversion: No

5 Floor 1 - Storage



Dimensions: 9'9" x 7'0"
Area: 68 sq. ft
Counted as Living Area: No

Heated: No
Finished: No
Enclosed: No
Contiguous: Yes
Permitted: Yes
Wet Space: No
Addition: No
Conversion: No

7527 Boxwood Drive, Roanoke, Roanoke County, Virginia, United States, 24018

6 Floor 1 - Workshop



Dimensions: 15'4" x 5'10"
Area: 90 sq. ft
Counted as Living Area: No

Heated: No
Finished: No
Enclosed: Yes
Contiguous: No
Permitted: Yes
Wet Space: No
Addition: No
Conversion: No

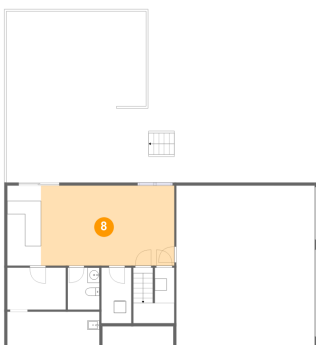
7 Floor 1 - Laundry



Dimensions: 5'0" x 9'3"
Area: 46 sq. ft
Counted as Living Area: Yes

Heated: Yes
Finished: Yes
Enclosed: Yes
Contiguous: Yes
Permitted: Yes
Wet Space: No
Addition: No
Conversion: No

8 Floor 1 - Recreation Room



Dimensions: 22'3" x 13'4"
Area: 296 sq. ft
Counted as Living Area: Yes

Heated: Yes
Finished: Yes
Enclosed: Yes
Contiguous: Yes
Permitted: Yes
Wet Space: No
Addition: No
Conversion: No

7527 Boxwood Drive, Roanoke, Roanoke County, Virginia, United States, 24018

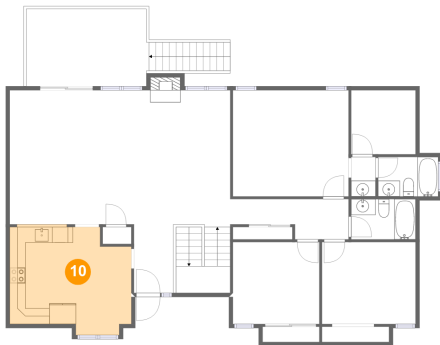
9 Floor 1 - Garage



Dimensions: 23'1" x 26'9"
Area: 619 sq. ft
Counted as Living Area: No

Heated: No
Finished: No
Enclosed: Yes
Contiguous: Yes
Permitted: Yes
Wet Space: No
Addition: No
Conversion: No

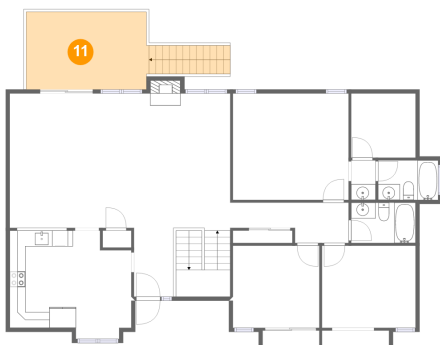
10 Floor 2 - Kitchen



Dimensions: 15'4" x 13'8"
Area: 188 sq. ft
Counted as Living Area:
Yes

Heated: Yes
Finished: Yes
Enclosed: Yes
Contiguous:
Yes
Permitted: Yes
Wet Space: No
Addition: No
Conversion: No

11 Floor 2 - Deck

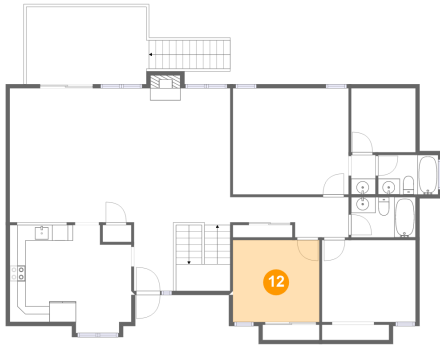


Dimensions: 15'6" x 9'9"
Area: 186 sq. ft
Counted as Living Area: No

Heated: No
Finished: Yes
Enclosed: No
Contiguous: Yes
Permitted: Yes
Wet Space: No
Addition: No
Conversion: No

**7527 Boxwood Drive, Roanoke, Roanoke County,
Virginia, United States, 24018**

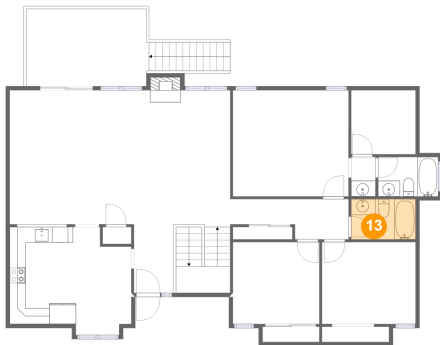
12 Floor 2 - Bedroom



Dimensions: 10'11" x 10'4"
Area: 113 sq. ft
Counted as Living Area:
Yes

Heated: Yes
Finished: Yes
Enclosed: Yes
Contiguous:
Yes
Permitted: Yes
Wet Space: No
Addition: No
Conversion: No

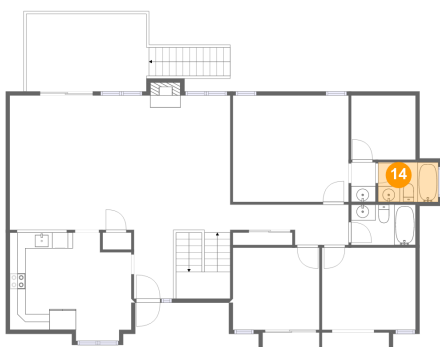
13 Floor 2 - Bath



Dimensions: 8'2" x 5'1"
Area: 41 sq. ft
Counted as Living Area:
Yes

Heated: Yes
Finished: Yes
Enclosed: Yes
Contiguous:
Yes
Permitted: Yes
Wet Space: Yes
Addition: No
Conversion: No

14 Floor 2 - Bath

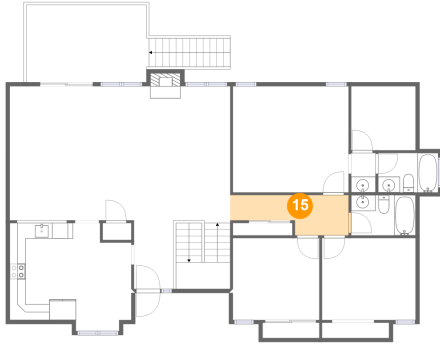


Dimensions: 7'7" x 4'11"
Area: 38 sq. ft
Counted as Living Area:
Yes

Heated: Yes
Finished: Yes
Enclosed: Yes
Contiguous:
Yes
Permitted: Yes
Wet Space: Yes
Addition: No
Conversion: No

7527 Boxwood Drive, Roanoke, Roanoke County, Virginia, United States, 24018

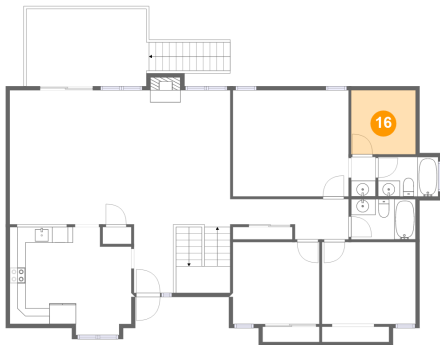
15 Floor 2 - Hall



Dimensions: 15'3" x 5'1"
Area: 61 sq. ft
Counted as Living Area:
Yes

Heated: Yes
Finished: Yes
Enclosed: Yes
Contiguous:
Yes
Permitted: Yes
Wet Space: No
Addition: No
Conversion: No

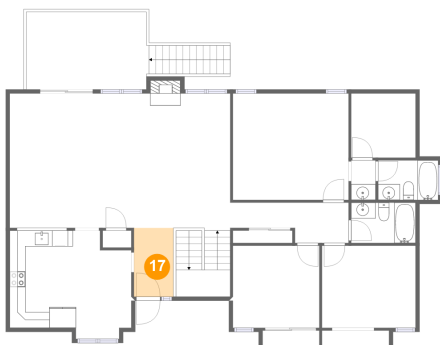
16 Floor 2 - W.i.c.



Dimensions: 8'2" x 8'1"
Area: 66 sq. ft
Counted as Living Area:
Yes

Heated: Yes
Finished: Yes
Enclosed: Yes
Contiguous:
Yes
Permitted: Yes
Wet Space: No
Addition: No
Conversion: No

17 Floor 2 - Foyer

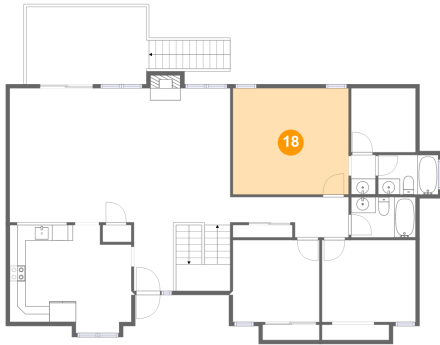


Dimensions: 5'0" x 8'8"
Area: 43 sq. ft
Counted as Living Area:
Yes

Heated: Yes
Finished: Yes
Enclosed: Yes
Contiguous:
Yes
Permitted: Yes
Wet Space: No
Addition: No
Conversion: No

7527 Boxwood Drive, Roanoke, Roanoke County, Virginia, United States, 24018

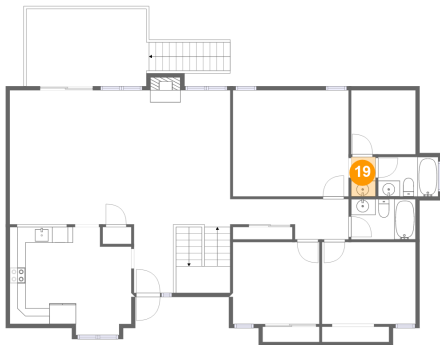
18 Floor 2 - Primary Bedroom



Dimensions: 14'7" x 13'4"
Area: 196 sq. ft
Counted as Living Area:
Yes

Heated: Yes
Finished: Yes
Enclosed: Yes
Contiguous:
Yes
Permitted: Yes
Wet Space: No
Addition: No
Conversion: No

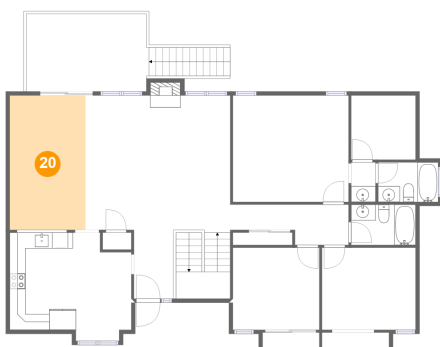
19 Floor 2 - Bath



Dimensions: 3'1" x 5'0"
Area: 15 sq. ft
Counted as Living Area:
Yes

Heated: Yes
Finished: Yes
Enclosed: Yes
Contiguous:
Yes
Permitted: Yes
Wet Space: Yes
Addition: No
Conversion: No

20 Floor 2 - Dining Area

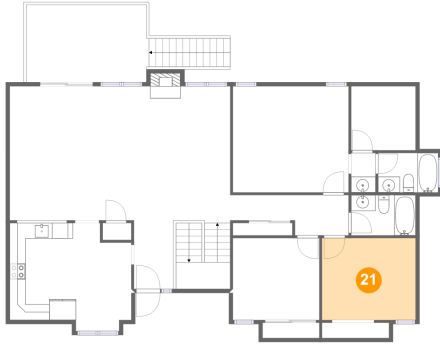


Dimensions: 9'7" x 16'11"
Area: 162 sq. ft
Counted as Living Area:
Yes

Heated: Yes
Finished: Yes
Enclosed: Yes
Contiguous:
Yes
Permitted: Yes
Wet Space: No
Addition: No
Conversion: No

7527 Boxwood Drive, Roanoke, Roanoke County, Virginia, United States, 24018

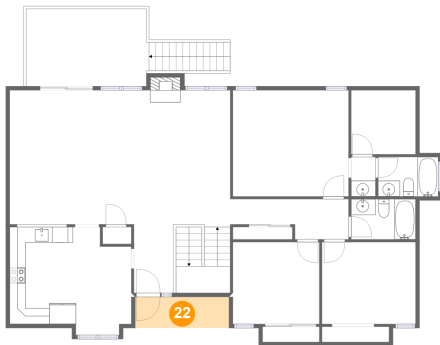
21 Floor 2 - Bedroom



Dimensions: 11'10" x 10'4"
Area: 122 sq. ft
Counted as Living Area:
Yes

Heated: Yes
Finished: Yes
Enclosed: Yes
Contiguous:
Yes
Permitted: Yes
Wet Space: No
Addition: No
Conversion: No

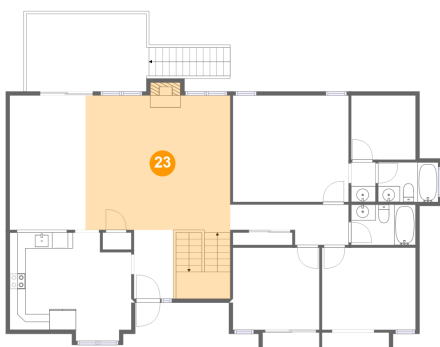
22 Floor 2 - Porch



Dimensions: 11'10" x 3'11"
Area: 46 sq. ft
Counted as Living Area: No

Heated: No
Finished: Yes
Enclosed: No
Contiguous: Yes
Permitted: Yes
Wet Space: No
Addition: No
Conversion: No

23 Floor 2 - Living Room



Dimensions: 18'3" x 17'3"
Area: 378 sq. ft
Counted as Living Area:
Yes

Heated: Yes
Finished: Yes
Enclosed: Yes
Contiguous:
Yes
Permitted: Yes
Wet Space: No
Addition: No
Conversion: No