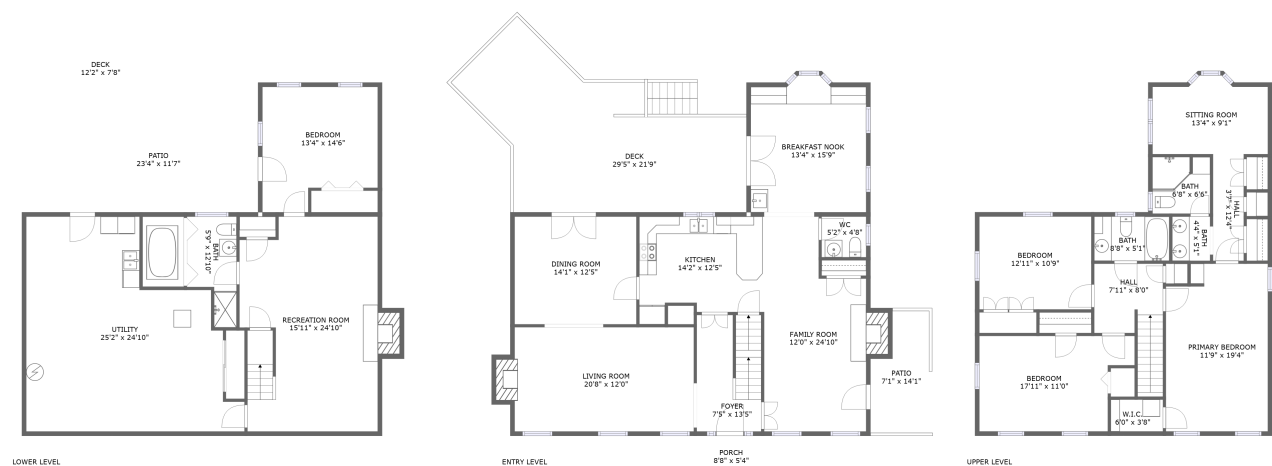




Home report


835 Wildwood Road Southwest, South Roanoke, Roanoke,
Roanoke city, Virginia, United States, 24014





Property summary


**0** Garages


**4** Bedrooms

**3** Bathrooms

**1** Half baths

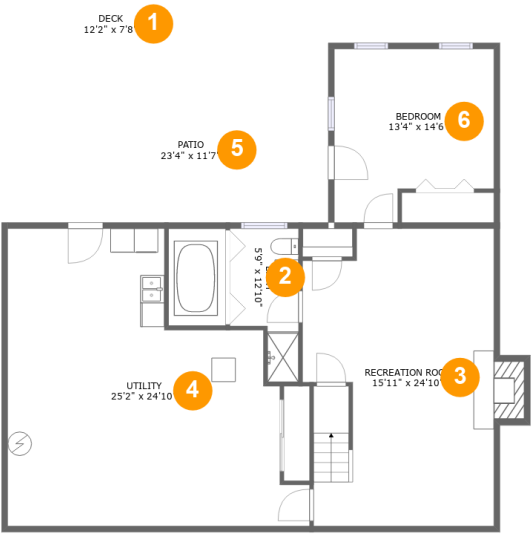
**3** Floors

**3,145** Gross living area sqft

**4,645** Total sqft

Home report

835 Wildwood Road Southwest, South Roanoke, Roanoke,
Roanoke city, Virginia, United States, 24014



Room dimensions

Floor 1 Total sqft: 1653 Living area: 750

#		Dimensions	sqft	Counted as living area
1	Deck	12'2" x 7'8"	82 sq. ft	No
2	Bath	5'9" x 12'10"	59 sq. ft	Yes
3	Recreation Room	15'11" x 24'10"	382 sq. ft	Yes
4	Utility	25'2" x 24'10"	483 sq. ft	No
5	Patio	23'4" x 11'7"	270 sq. ft	No
6	Bedroom	13'4" x 14'6"	170 sq. ft	Yes

Home report

835 Wildwood Road Southwest, South Roanoke, Roanoke,
Roanoke city, Virginia, United States, 24014



Room dimensions

Floor 2 Total sqft: 1888 Living area: 1291

#		Dimensions	sqft	Counted as living area
7	WC	5'2" x 4'8"	24 sq. ft	Yes
8	Dining Room	14'1" x 12'5"	175 sq. ft	Yes
9	Breakfast Nook	13'4" x 15'9"	198 sq. ft	Yes
10	Deck	29'5" x 21'9"	439 sq. ft	No
11	Patio	7'1" x 14'1"	84 sq. ft	No
12	Foyer	7'5" x 13'5"	98 sq. ft	Yes
13	Kitchen	14'2" x 12'5"	157 sq. ft	Yes
14	Living Room	20'8" x 12'0"	259 sq. ft	Yes
15	Porch	8'8" x 5'4"	47 sq. ft	No
16	Family Room	12'0" x 24'10"	267 sq. ft	Yes

Home report

835 Wildwood Road Southwest, South Roanoke, Roanoke,
Roanoke city, Virginia, United States, 24014

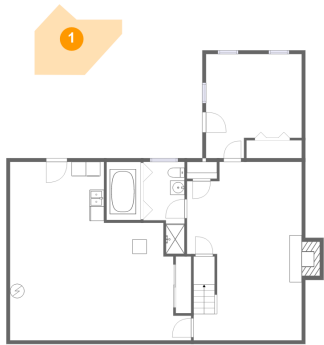


Room dimensions

Floor 3 Total sqft: 1104 Living area: 1104

#		Dimensions	sqft	Counted as living area
17	Hall	3'7" x 12'4"	44 sq. ft	Yes
18	Bedroom	12'11" x 10'9"	138 sq. ft	Yes
19	Bath	6'8" x 6'6"	43 sq. ft	Yes
20	Hall	7'11" x 8'0"	84 sq. ft	Yes
21	Bath	4'4" x 5'1"	22 sq. ft	Yes
22	Primary Bedroom	11'9" x 19'4"	220 sq. ft	Yes
23	W.I.C.	6'0" x 3'8"	22 sq. ft	Yes
24	Bedroom	17'11" x 11'0"	174 sq. ft	Yes
25	Sitting Room	13'4" x 9'1"	108 sq. ft	Yes
26	Bath	8'8" x 5'1"	44 sq. ft	Yes

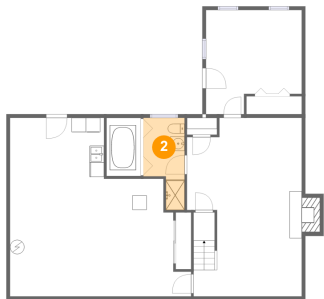
1 Floor 1 - Deck



Dimensions: 12'2" x 7'8"
Area: 82 sq. ft
Counted as living area: No

Heated: No
Finished: Yes
Enclosed: No
Contiguous: Yes
Permitted: Yes
Wet space: No
Addition: No
Conversion: No

2 Floor 1 - Bath

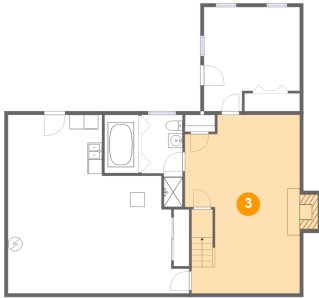


Dimensions: 5'9" x 12'10"
Area: 59 sq. ft
Counted as living area: Yes

Heated: Yes
Finished: Yes
Enclosed: Yes
Contiguous: Yes
Permitted: Yes
Wet space: Yes
Addition: No
Conversion: No

835 Wildwood Road Southwest, South Roanoke, Roanoke,
Roanoke city, Virginia, United States, 24014

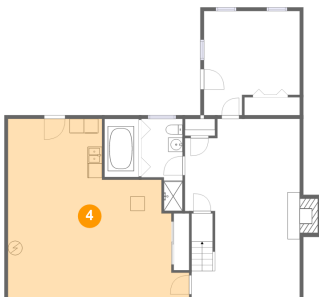
3 Floor 1 - Recreation Room



Dimensions: 15'11" x 24'10"
Area: 382 sq. ft
Counted as living area: Yes

Heated: Yes
Finished: Yes
Enclosed: Yes
Contiguous: Yes
Permitted: Yes
Wet space: No
Addition: No
Conversion: No

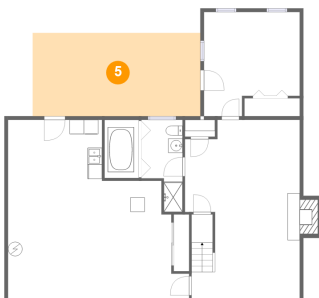
4 Floor 1 - Utility



Dimensions: 25'2" x 24'10"
Area: 483 sq. ft
Counted as living area: No

Heated: Yes
Finished: No
Enclosed: Yes
Contiguous: Yes
Permitted: Yes
Wet space: No
Addition: No
Conversion: No

5 Floor 1 - Patio



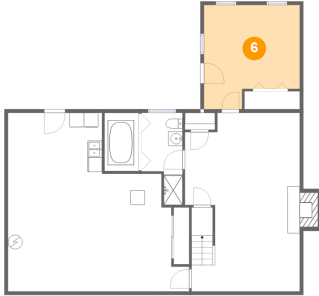
Dimensions: 23'4" x 11'7"
Area: 270 sq. ft
Counted as living area: No

Heated: No
Finished: Yes
Enclosed: No
Contiguous: Yes
Permitted: Yes
Wet space: No
Addition: No
Conversion: No

Home report

835 Wildwood Road Southwest, South Roanoke, Roanoke,
Roanoke city, Virginia, United States, 24014

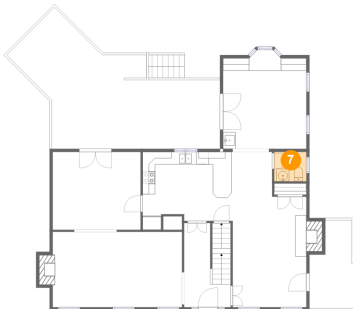
6 Floor 1 - Bedroom



Dimensions: 13'4" x 14'6"
Area: 170 sq. ft
Counted as living area: Yes

Heated: Yes
Finished: Yes
Enclosed: Yes
Contiguous: Yes
Permitted: Yes
Wet space: No
Addition: No
Conversion: No

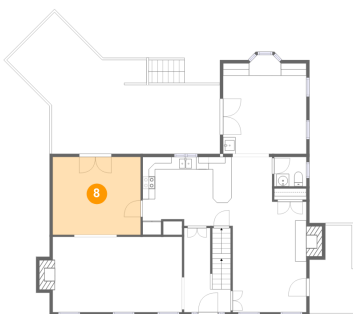
7 Floor 2 - WC



Dimensions: 5'2" x 4'8"
Area: 24 sq. ft
Counted as living area: Yes

Heated: Yes
Finished: Yes
Enclosed: Yes
Contiguous: Yes
Permitted: Yes
Wet space: Yes
Addition: No
Conversion: No

8 Floor 2 - Dining Room

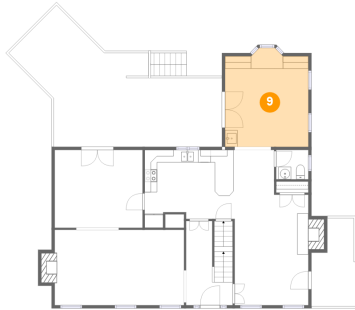


Dimensions: 14'1" x 12'5"
Area: 175 sq. ft
Counted as living area: Yes

Heated: Yes
Finished: Yes
Enclosed: Yes
Contiguous: Yes
Permitted: Yes
Wet space: No
Addition: No
Conversion: No

835 Wildwood Road Southwest, South Roanoke, Roanoke,
Roanoke city, Virginia, United States, 24014

9 Floor 2 - Breakfast Nook



Dimensions: 13'4" x 15'9"
Area: 198 sq. ft
Counted as living area: Yes

Heated: Yes
Finished: Yes
Enclosed: Yes
Contiguous: Yes
Permitted: Yes
Wet space: No
Addition: No
Conversion: No

10 Floor 2 - Deck



Dimensions: 29'5" x 21'9"
Area: 439 sq. ft
Counted as living area: No

Heated: No
Finished: Yes
Enclosed: No
Contiguous: Yes
Permitted: Yes
Wet space: No
Addition: No
Conversion: No

11 Floor 2 - Patio

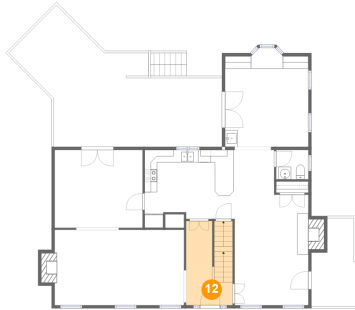


Dimensions: 7'1" x 14'1"
Area: 84 sq. ft
Counted as living area: No

Heated: No
Finished: Yes
Enclosed: No
Contiguous: Yes
Permitted: Yes
Wet space: No
Addition: No
Conversion: No

835 Wildwood Road Southwest, South Roanoke, Roanoke,
Roanoke city, Virginia, United States, 24014

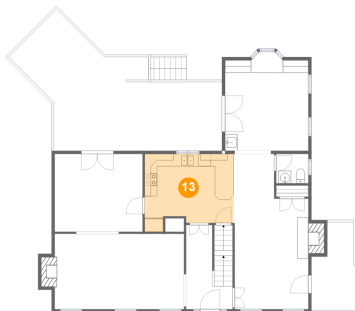
12 Floor 2 - Foyer



Dimensions: 7'5" x 13'5"
Area: 98 sq. ft
Counted as living area: Yes

Heated: Yes
Finished: Yes
Enclosed: Yes
Contiguous: Yes
Permitted: Yes
Wet space: No
Addition: No
Conversion: No

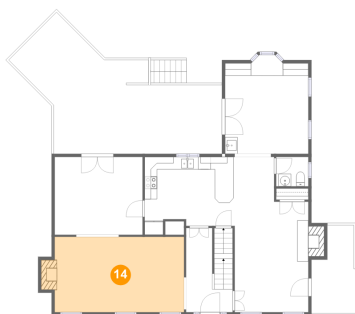
13 Floor 2 - Kitchen



Dimensions: 14'2" x 12'5"
Area: 157 sq. ft
Counted as living area: Yes

Heated: Yes
Finished: Yes
Enclosed: Yes
Contiguous: Yes
Permitted: Yes
Wet space: No
Addition: No
Conversion: No

14 Floor 2 - Living Room



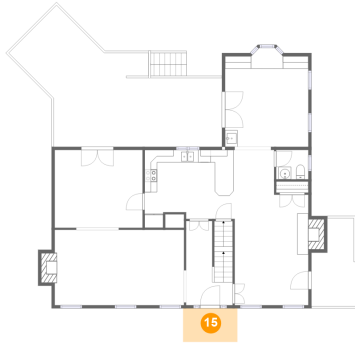
Dimensions: 20'8" x 12'0"
Area: 259 sq. ft
Counted as living area: Yes

Heated: Yes
Finished: Yes
Enclosed: Yes
Contiguous: Yes
Permitted: Yes
Wet space: No
Addition: No
Conversion: No

Home report

835 Wildwood Road Southwest, South Roanoke, Roanoke,
Roanoke city, Virginia, United States, 24014

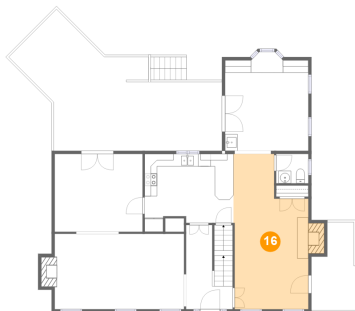
15 Floor 2 - Porch



Dimensions: 8'8" x 5'4"
Area: 47 sq. ft
Counted as living area: No

Heated: No
Finished: Yes
Enclosed: No
Contiguous: Yes
Permitted: Yes
Wet space: No
Addition: No
Conversion: No

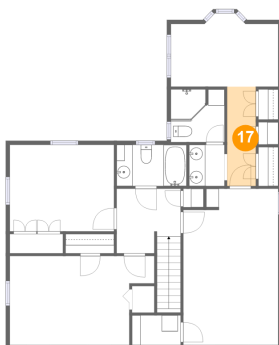
16 Floor 2 - Family Room



Dimensions: 12'0" x 24'10"
Area: 267 sq. ft
Counted as living area: Yes

Heated: Yes
Finished: Yes
Enclosed: Yes
Contiguous: Yes
Permitted: Yes
Wet space: No
Addition: No
Conversion: No

17 Floor 3 - Hall



Dimensions: 3'7" x 12'4"
Area: 44 sq. ft
Counted as living area: Yes

Heated: Yes
Finished: Yes
Enclosed: Yes
Contiguous: Yes
Permitted: Yes
Wet space: No
Addition: No
Conversion: No

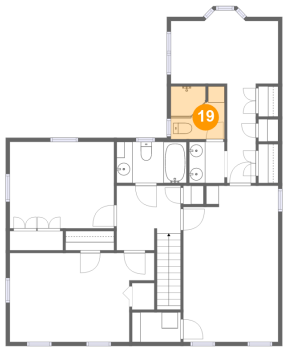
18 Floor 3 - Bedroom



Dimensions: 12'11" x 10'9"
Area: 138 sq. ft
Counted as living area: Yes

Heated: Yes
Finished: Yes
Enclosed: Yes
Contiguous: Yes
Permitted: Yes
Wet space: No
Addition: No
Conversion: No

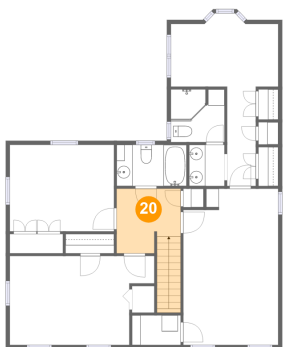
19 Floor 3 - Bath



Dimensions: 6'8" x 6'6"
Area: 43 sq. ft
Counted as living area: Yes

Heated: Yes
Finished: Yes
Enclosed: Yes
Contiguous: Yes
Permitted: Yes
Wet space: Yes
Addition: No
Conversion: No

20 Floor 3 - Hall



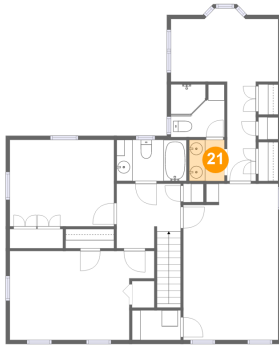
Dimensions: 7'11" x 8'0"
Area: 84 sq. ft
Counted as living area: Yes

Heated: Yes
Finished: Yes
Enclosed: Yes
Contiguous: Yes
Permitted: Yes
Wet space: No
Addition: No
Conversion: No

Home report

835 Wildwood Road Southwest, South Roanoke, Roanoke,
Roanoke city, Virginia, United States, 24014

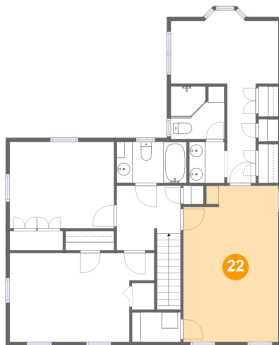
21 Floor 3 - Bath



Dimensions: 4'4" x 5'1"
Area: 22 sq. ft
Counted as living area: Yes

Heated: Yes
Finished: Yes
Enclosed: Yes
Contiguous: Yes
Permitted: Yes
Wet space: Yes
Addition: No
Conversion: No

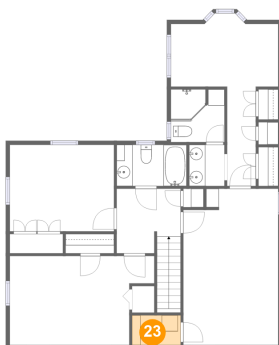
22 Floor 3 - Primary Bedroom



Dimensions: 11'9" x 19'4"
Area: 220 sq. ft
Counted as living area: Yes

Heated: Yes
Finished: Yes
Enclosed: Yes
Contiguous: Yes
Permitted: Yes
Wet space: No
Addition: No
Conversion: No

23 Floor 3 - W.I.C.



Dimensions: 6'0" x 3'8"
Area: 22 sq. ft
Counted as living area: Yes

Heated: Yes
Finished: Yes
Enclosed: Yes
Contiguous: Yes
Permitted: Yes
Wet space: No
Addition: No
Conversion: No

Home report

835 Wildwood Road Southwest, South Roanoke, Roanoke,
Roanoke city, Virginia, United States, 24014

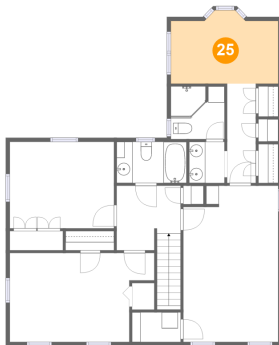
24 Floor 3 - Bedroom



Dimensions: 17'11" x 11'0"
Area: 174 sq. ft
Counted as living area: Yes

Heated: Yes
Finished: Yes
Enclosed: Yes
Contiguous: Yes
Permitted: Yes
Wet space: No
Addition: No
Conversion: No

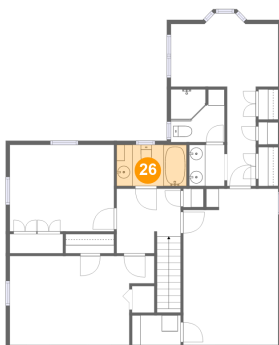
25 Floor 3 - Sitting Room



Dimensions: 13'4" x 9'1"
Area: 108 sq. ft
Counted as living area: Yes

Heated: Yes
Finished: Yes
Enclosed: Yes
Contiguous: Yes
Permitted: Yes
Wet space: No
Addition: No
Conversion: No

26 Floor 3 - Bath



Dimensions: 8'8" x 5'1"
Area: 44 sq. ft
Counted as living area: Yes

Heated: Yes
Finished: Yes
Enclosed: Yes
Contiguous: Yes
Permitted: Yes
Wet space: Yes
Addition: No
Conversion: No