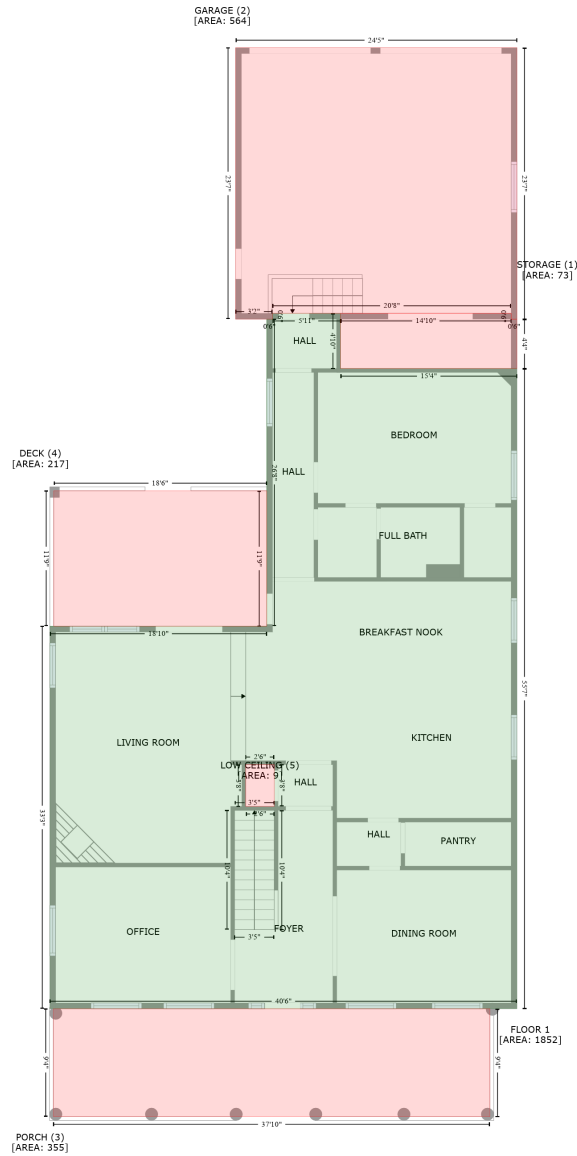


# 15 Meeting Street Northwest, Huntsville, Madison County, Alabama, United States, 35806

Gross Living Area: 3523 sq. ft



Space	Area (sq. ft)	Calculation
FLOOR 1 (Living area)	1852	Coordinate Polygon Area Algorithm using inches $-((388.2 + 388.2) * (272 - 329.5) + (388.2 + 571.7) * (329.5 - 329.5) + (571.7 + 571.7) * (329.5 - 996.6) + (571.7 + 85.7) * (996.6 - 996.6) + (85.7 + 85.7) * (996.6 - 597.9) + (85.7 + 311.4) * (597.9 - 597.9) + (311.4 + 311.4) * (597.9 - 278) + (311.4 + 317.4) * (278 - 278) + (317.4 + 317.4) * (278 - 272) + (317.4 + 388.2) * (272 - 272)) * 0.5 * 0.00694 + -((319.2 + 289.6) * (742.1 - 742.1) + (289.6 + 289.6) * (742.1 - 785.7) + (289.6 + 319.2) * (785.7 - 785.7) + (319.2 + 319.2) * (785.7 - 742.1)) * 0.5 * 0.00694$

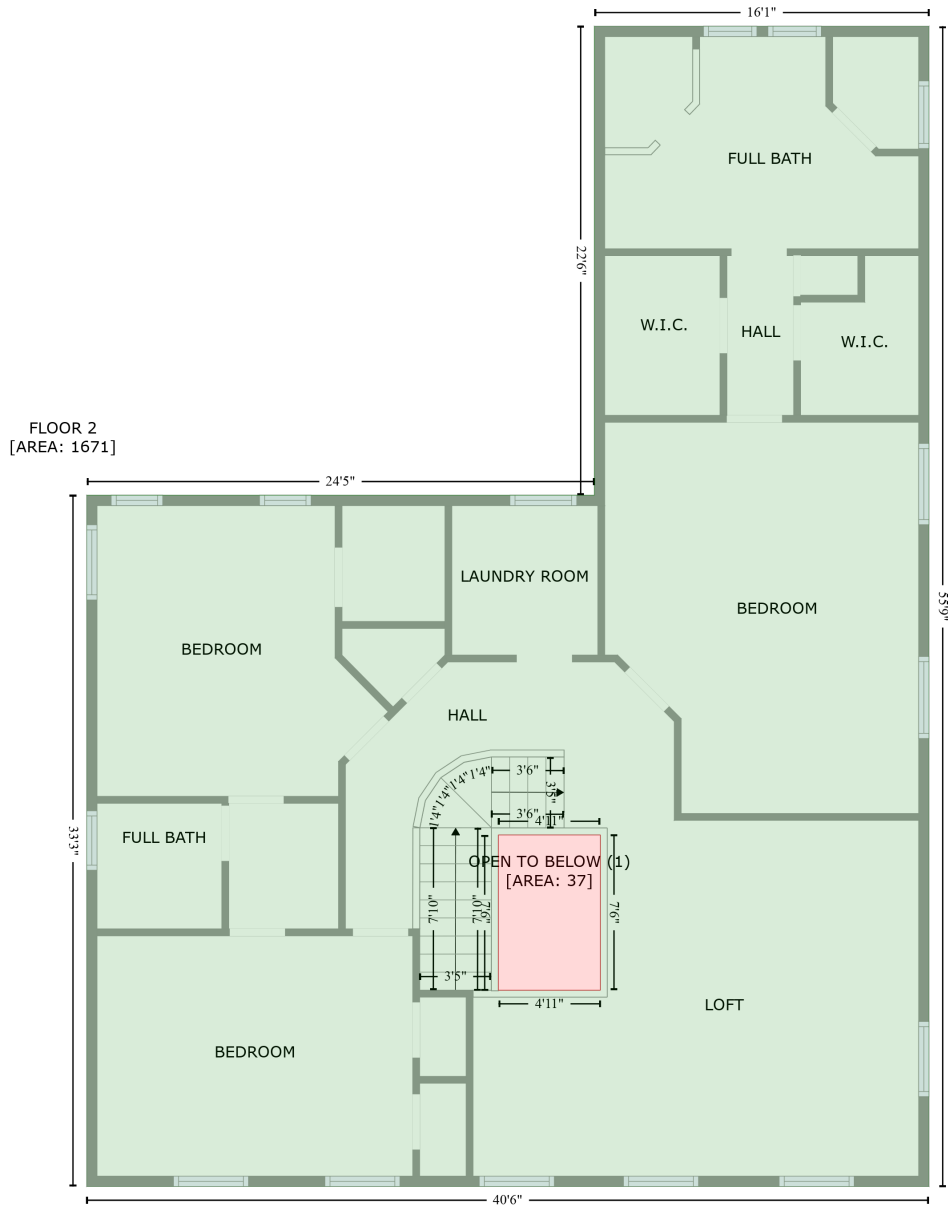
# 15 Meeting Street Northwest, Huntsville, Madison County, Alabama, United States, 35806

Gross Living Area: 3523 sq. ft

Space	Area (sq. ft)	Calculation <small>Coordinate Polygon Area Algorithm using inches</small>
STORAGE (Non-living area)	73	$-\left((565.7 + 565.7) * (272 - 278) + (565.7 + 571.7) * (278 - 278) + (571.7 + 571.7) * (278 - 329.5) + (571.7 + 388.2) * (329.5 - 329.5) + (388.2 + 388.2) * (329.5 - 272) + (388.2 + 565.7) * (272 - 272)\right) * 0.5 * 0.00694$
GARAGE (Non-living area)	564	$-\left((571.7 + 571.7) * (-4.8 - 278) + (571.7 + 565.7) * (278 - 278) + (565.7 + 565.7) * (278 - 272) + (565.7 + 317.4) * (272 - 272) + (317.4 + 317.4) * (272 - 278) + (317.4 + 279) * (278 - 278) + (279 + 279) * (278 - -4.8) + (279 + 571.7) * (-4.8 - -4.8)\right) * 0.5 * 0.00694$
PORCH (Non-living area)	355	$-\left((543.6 + 543.6) * (996.6 - 1109) + (543.6 + 89.4) * (1109 - 1109) + (89.4 + 89.4) * (1109 - 996.6) + (89.4 + 543.6) * (996.6 - 996.6)\right) * 0.5 * 0.00694$
DECK (Non-living area)	217	$-\left((311.4 + 311.4) * (456.8 - 597.9) + (311.4 + 89.8) * (597.9 - 597.9) + (89.8 + 89.8) * (597.9 - 456.8) + (89.8 + 311.4) * (456.8 - 456.8)\right) * 0.5 * 0.00694$
LOW CEILING (Non-living area)	9	$-\left((319.2 + 319.2) * (742.1 - 785.7) + (319.2 + 289.6) * (785.7 - 785.7) + (289.6 + 289.6) * (785.7 - 742.1) + (289.6 + 319.2) * (742.1 - 742.1)\right) * 0.5 * 0.00694$

# 15 Meeting Street Northwest, Huntsville, Madison County, Alabama, United States, 35806

Gross Living Area: 3523 sq. ft



Space	Area (sq. ft)	Calculation <small>Coordinate Polygon Area Algorithm using inches</small>
FLOOR 2 (Living area)	1671	$-((571.7 + 571.7) * (327.5 - 996.6) + (571.7 + 85.7) * (996.6 - 996.6) + (85.7 + 85.7) * (996.6 - 597.9) + (85.7 + 378.6) * (597.9 - 597.9) + (378.6 + 378.6) * (597.9 - 327.5) + (378.6 + 571.7) * (327.5 - 327.5)) * 0.5 + -((382.1 + 323.3) * (793.8 - 793.8) + (323.3 + 323.3) * (793.8 - 883.3) + (323.3 + 382.1) * (883.3 - 883.3) + (382.1 + 382.1) * (883.3 - 793.8)) * 0.5 * 0.00694$
OPEN TO BELOW (Non-living area)	37	$-((382.1 + 382.1) * (793.8 - 883.3) + (382.1 + 323.3) * (883.3 - 883.3) + (323.3 + 323.3) * (883.3 - 793.8) + (323.3 + 382.1) * (793.8 - 793.8)) * 0.5 * 0.00694$