

Home report

811 Osceola Road, Belleair, Pinellas County, Florida, United States, 33756



Total Area: 2068 sq. ft

Floor 1: 2068 sq. ft


Excluded: Garage 433 sq. ft, Patio 655 sq. ft, Covered patio 243 sq. ft, Walls: 147 sq. ft

Property summary

 **1** Floors

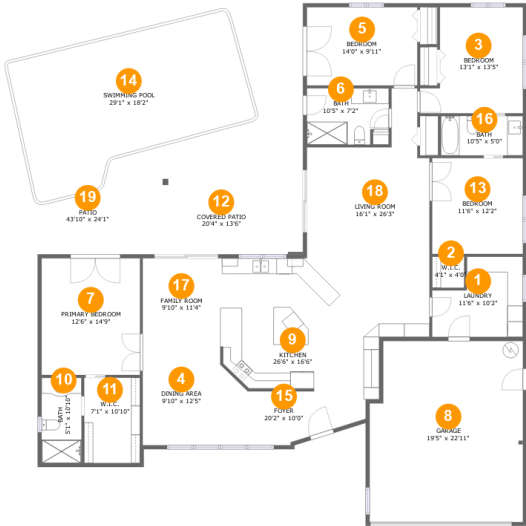
 **4** Bedrooms

 **3** Bathrooms

 **1** Garages

Home report

811 Osceola Road, Belleair, Pinellas County, Florida, United States, 33756



Room dimensions

Floor 1 Total:2068sqft Excluded: 1331sqft

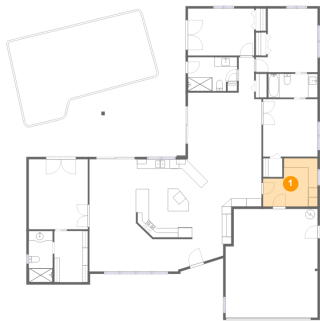
#		Max Dimensions	sqft	Included
1	Laundry	11'6" x 10'2"	99 sq. ft	Yes
2	W.I.C.	4'1" x 4'0"	16 sq. ft	Yes
3	Bedroom	13'1" x 13'5"	150 sq. ft	Yes
4	Dining Area	9'10" x 12'5"	122 sq. ft	Yes
5	Bedroom	14'0" x 9'11"	139 sq. ft	Yes
6	Bath	10'5" x 7'2"	70 sq. ft	Yes
7	Primary Bedroom	12'6" x 14'9"	185 sq. ft	Yes
8	Garage	19'5" x 22'11"	433 sq. ft	No
9	Kitchen	26'6" x 16'6"	329 sq. ft	Yes
10	Bath	5'1" x 10'10"	55 sq. ft	Yes
11	W.I.C.	7'1" x 10'10"	77 sq. ft	Yes

Home report

811 Osceola Road, Belleair, Pinellas County, Florida, United States, 33756

#		Max Dimensions	sqft	Included
12	Covered Patio	20'4" x 13'6"	243 sq. ft	No
13	Bedroom	11'6" x 12'2"	140 sq. ft	Yes
14	Swimming Pool	29'1" x 18'2"	453 sq. ft	No
15	Foyer	20'2" x 10'0"	116 sq. ft	Yes
16	Bath	10'5" x 5'0"	52 sq. ft	Yes
17	Family Room	9'10" x 11'4"	111 sq. ft	Yes
18	Living Room	16'1" x 26'3"	305 sq. ft	Yes
19	Patio	43'10" x 24'1"	1108 sq. ft	No

1 Floor 1 - Laundry



Max Dimensions: 11'6" x 10'2"
Calculated Area: 99 sq. ft
Included: Yes

Heated: Yes
Finished: Yes
Enclosed: Yes
Contiguous: Yes
Permitted: Yes
Wet space: No
Addition: No
Conversion: No

2 Floor 1 - W.I.C.



Max Dimensions: 4'1" x 4'0"
Calculated Area: 16 sq. ft
Included: Yes

Heated: Yes
Finished: Yes
Enclosed: Yes
Contiguous: Yes
Permitted: Yes
Wet space: No
Addition: No
Conversion: No

811 Osceola Road, Belleair, Pinellas County, Florida, United States, 33756

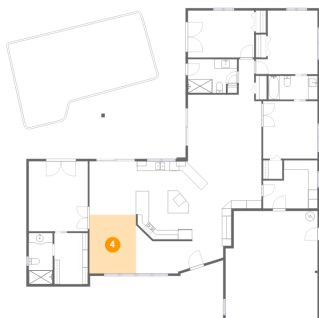
3 Floor 1 - Bedroom



Max Dimensions: 13'1" x 13'5"
Calculated Area: 150 sq. ft
Included: Yes

Heated: Yes
Finished: Yes
Enclosed: Yes
Contiguous: Yes
Permitted: Yes
Wet space: No
Addition: No
Conversion: No

4 Floor 1 - Dining Area



Max Dimensions: 9'10" x 12'5"
Calculated Area: 122 sq. ft
Included: Yes

Heated: Yes
Finished: Yes
Enclosed: Yes
Contiguous: Yes
Permitted: Yes
Wet space: No
Addition: No
Conversion: No

5 Floor 1 - Bedroom



Max Dimensions: 14'0" x 9'11"
Calculated Area: 139 sq. ft
Included: Yes

Heated: Yes
Finished: Yes
Enclosed: Yes
Contiguous: Yes
Permitted: Yes
Wet space: No
Addition: No
Conversion: No

811 Osceola Road, Belleair, Pinellas County, Florida, United States, 33756

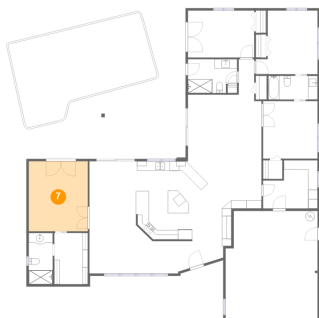
6 Floor 1 - Bath



Max Dimensions: 10'5" x 7'2"
Calculated Area: 70 sq. ft
Included: Yes

Heated: Yes
Finished: Yes
Enclosed: Yes
Contiguous: Yes
Permitted: Yes
Wet space: Yes
Addition: No
Conversion: No

7 Floor 1 - Primary Bedroom



Max Dimensions: 12'6" x 14'9"
Calculated Area: 185 sq. ft
Included: Yes

Heated: Yes
Finished: Yes
Enclosed: Yes
Contiguous: Yes
Permitted: Yes
Wet space: No
Addition: No
Conversion: No

8 Floor 1 - Garage



Max Dimensions: 19'5" x 22'11"
Calculated Area: 433 sq. ft
Included: No

Heated: No
Finished: No
Enclosed: Yes
Contiguous: Yes
Permitted: Yes
Wet space: No
Addition: No
Conversion: No

811 Osceola Road, Belleair, Pinellas County, Florida, United States, 33756

9 Floor 1 - Kitchen



Max Dimensions: 26'6" x 16'6"
Calculated Area: 329 sq. ft
Included: Yes

Heated: Yes
Finished: Yes
Enclosed: Yes
Contiguous: Yes
Permitted: Yes
Wet space: No
Addition: No
Conversion: No

10 Floor 1 - Bath



Max Dimensions: 5'1" x 10'10"
Calculated Area: 55 sq. ft
Included: Yes

Heated: Yes
Finished: Yes
Enclosed: Yes
Contiguous: Yes
Permitted: Yes
Wet space: Yes
Addition: No
Conversion: No

11 Floor 1 - W.I.C.

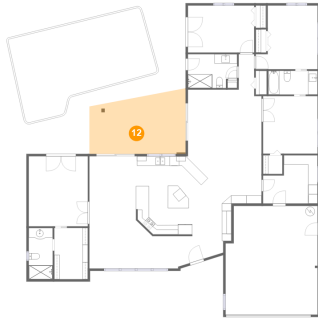


Max Dimensions: 7'1" x 10'10"
Calculated Area: 77 sq. ft
Included: Yes

Heated: Yes
Finished: Yes
Enclosed: Yes
Contiguous: Yes
Permitted: Yes
Wet space: No
Addition: No
Conversion: No

811 Osceola Road, Belleair, Pinellas County, Florida, United States, 33756

12 Floor 1 - Covered Patio



Max Dimensions: 20'4" x 13'6"
Calculated Area: 243 sq. ft
Included: No

Heated: No
Finished: Yes
Enclosed: No
Contiguous: Yes
Permitted: Yes
Wet space: No
Addition: No
Conversion: No

13 Floor 1 - Bedroom



Max Dimensions: 11'6" x 12'2"
Calculated Area: 140 sq. ft
Included: Yes

Heated: Yes
Finished: Yes
Enclosed: Yes
Contiguous: Yes
Permitted: Yes
Wet space: No
Addition: No
Conversion: No

14 Floor 1 - Swimming Pool



Max Dimensions: 29'1" x 18'2"
Calculated Area: 453 sq. ft
Included: No

Heated: No
Finished: No
Enclosed: No
Contiguous: Yes
Permitted: No
Wet space: No
Addition: No
Conversion: No

811 Osceola Road, Belleair, Pinellas County, Florida, United States, 33756

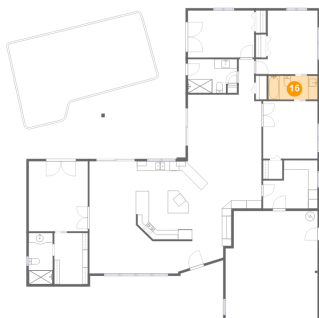
15 Floor 1 - Foyer



Max Dimensions: 20'2" x 10'0"
Calculated Area: 116 sq. ft
Included: Yes

Heated: Yes
Finished: Yes
Enclosed: Yes
Contiguous: Yes
Permitted: Yes
Wet space: No
Addition: No
Conversion: No

16 Floor 1 - Bath



Max Dimensions: 10'5" x 5'0"
Calculated Area: 52 sq. ft
Included: Yes

Heated: Yes
Finished: Yes
Enclosed: Yes
Contiguous: Yes
Permitted: Yes
Wet space: Yes
Addition: No
Conversion: No

17 Floor 1 - Family Room



Max Dimensions: 9'10" x 11'4"
Calculated Area: 111 sq. ft
Included: Yes

Heated: Yes
Finished: Yes
Enclosed: Yes
Contiguous: Yes
Permitted: Yes
Wet space: No
Addition: No
Conversion: No

811 Osceola Road, Belleair, Pinellas County, Florida, United States, 33756

18 Floor 1 - Living Room



Max Dimensions: 16'1" x 26'3"
Calculated Area: 305 sq. ft
Included: Yes

Heated: Yes
Finished: Yes
Enclosed: Yes
Contiguous: Yes
Permitted: Yes
Wet space: No
Addition: No
Conversion: No

19 Floor 1 - Patio



Max Dimensions: 43'10" x 24'1"
Calculated Area: 1108 sq. ft
Included: No

Heated: No
Finished: Yes
Enclosed: No
Contiguous: Yes
Permitted: Yes
Wet space: No
Addition: No
Conversion: No