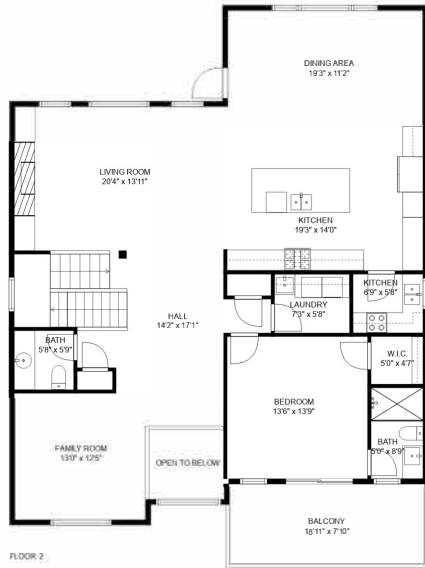


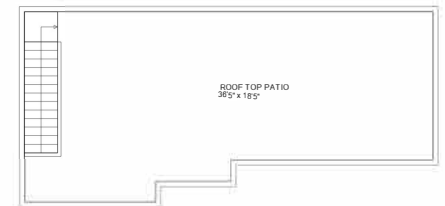
FLOOR 1



FLOOR 2



FLOOR 3

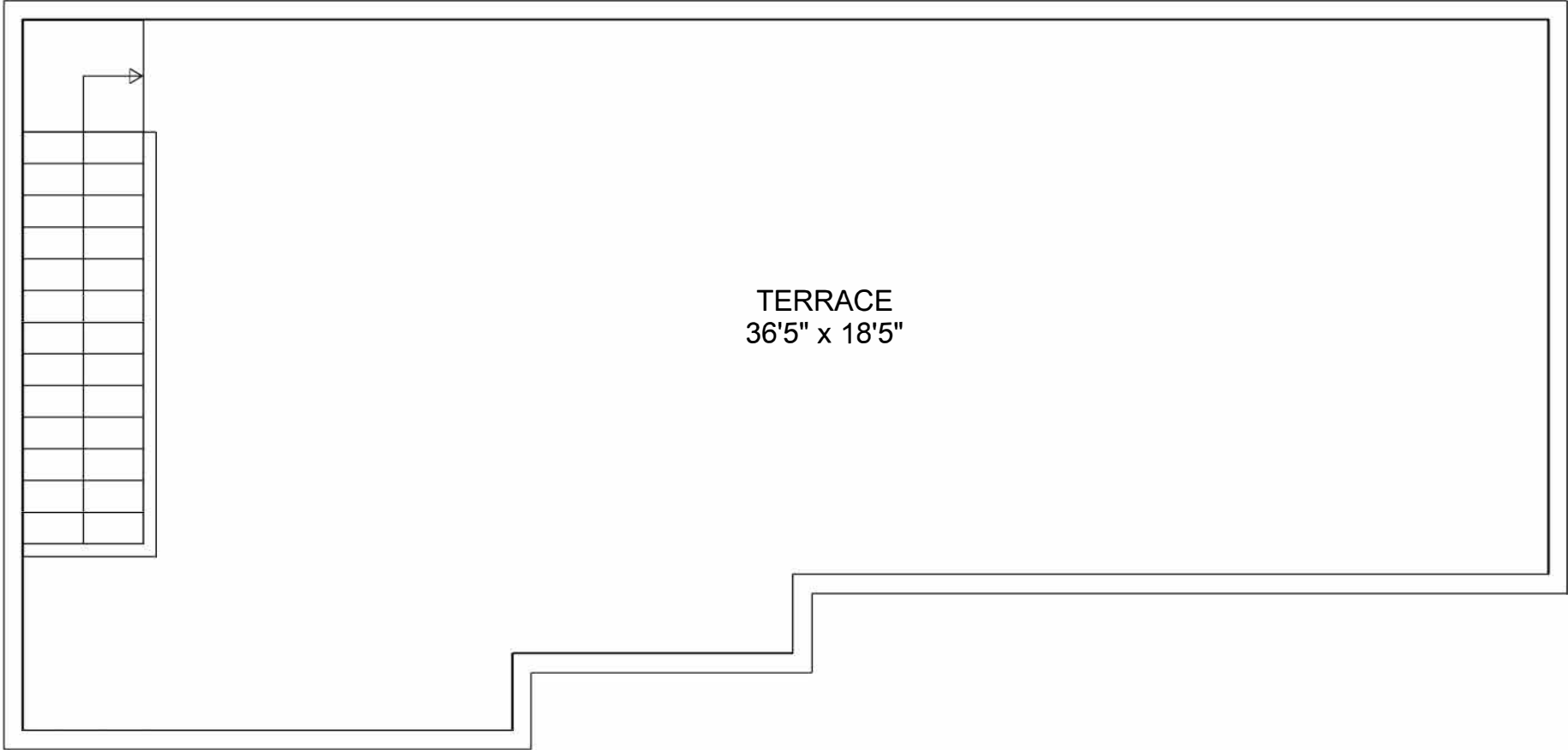


FLOOR 4

### Estimated areas

FLOOR 1: 1251 sq. ft  
 FLOOR 2: 1691 sq. ft  
 FLOOR 3: 1399 sq. ft  
 ROOF TOP PATIO: 580 sq. ft  
 Total: 4432 sq. ft

Sizes and dimensions may have a slight variation from actual sizes. E&O Insured.

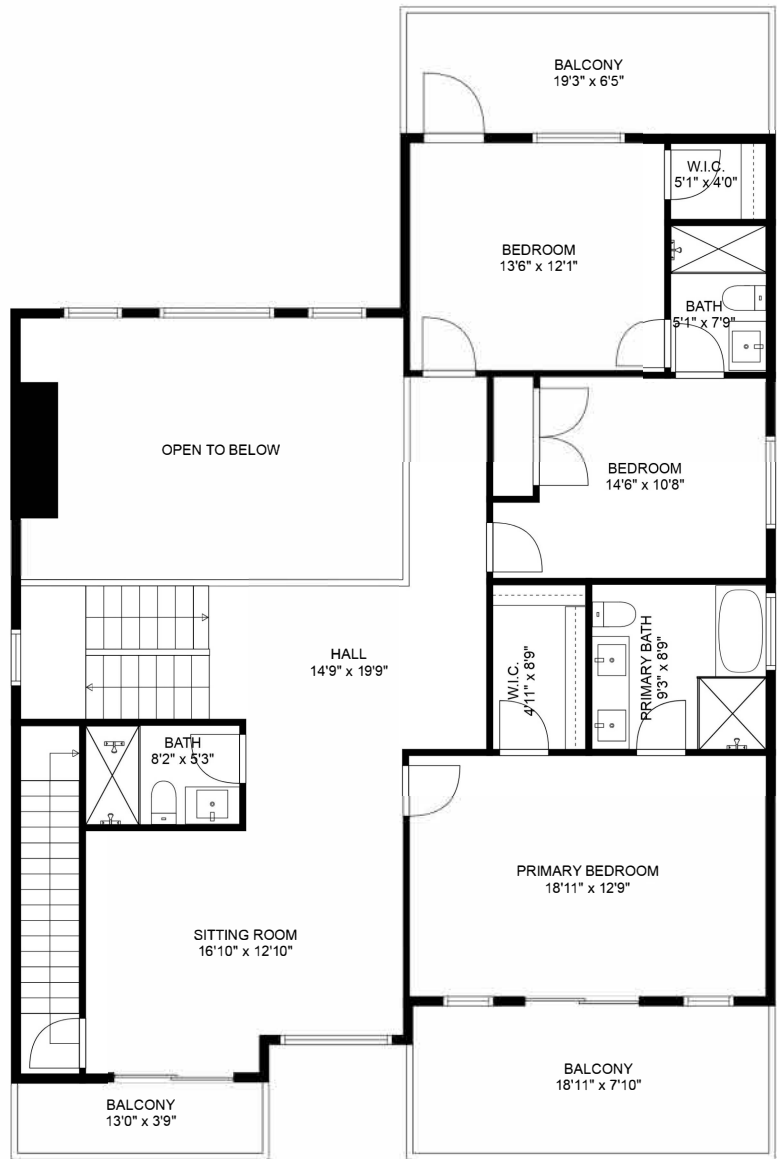


TERRACE  
36'5" x 18'5"

**Estimated areas**

- FLOOR 1: 1251 sq. ft
- FLOOR 2: 1691 sq. ft
- FLOOR 3: 1399 sq. ft
- ROOF TOP PATIO: 580 sq. ft
- Total: 4432 sq. ft

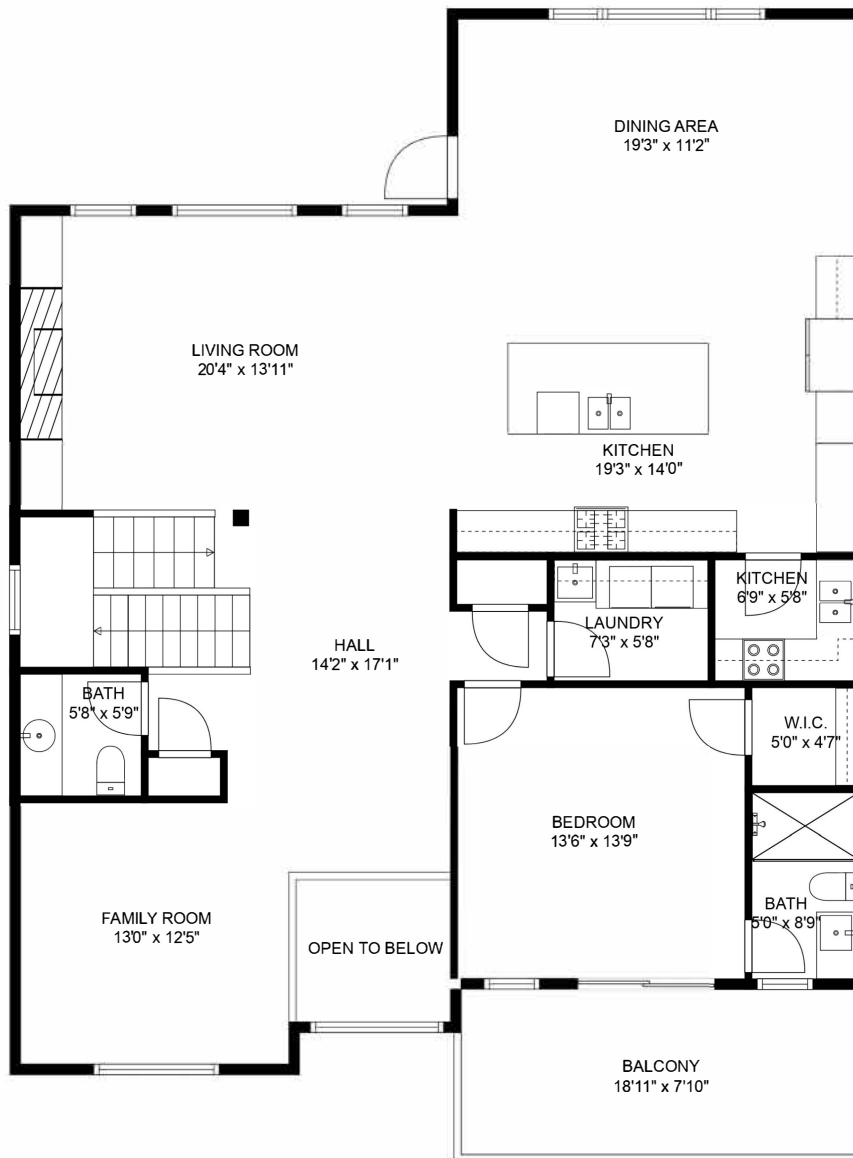
Sizes and dimensions may have a slight variation from actual sizes. E&O Insured.



**Estimated areas**

- FLOOR 1: 1251 sq. ft
- FLOOR 2: 1691 sq. ft
- FLOOR 3: 1399 sq. ft
- ROOF TOP PATIO: 580 sq. ft
- Total: 4432 sq. ft

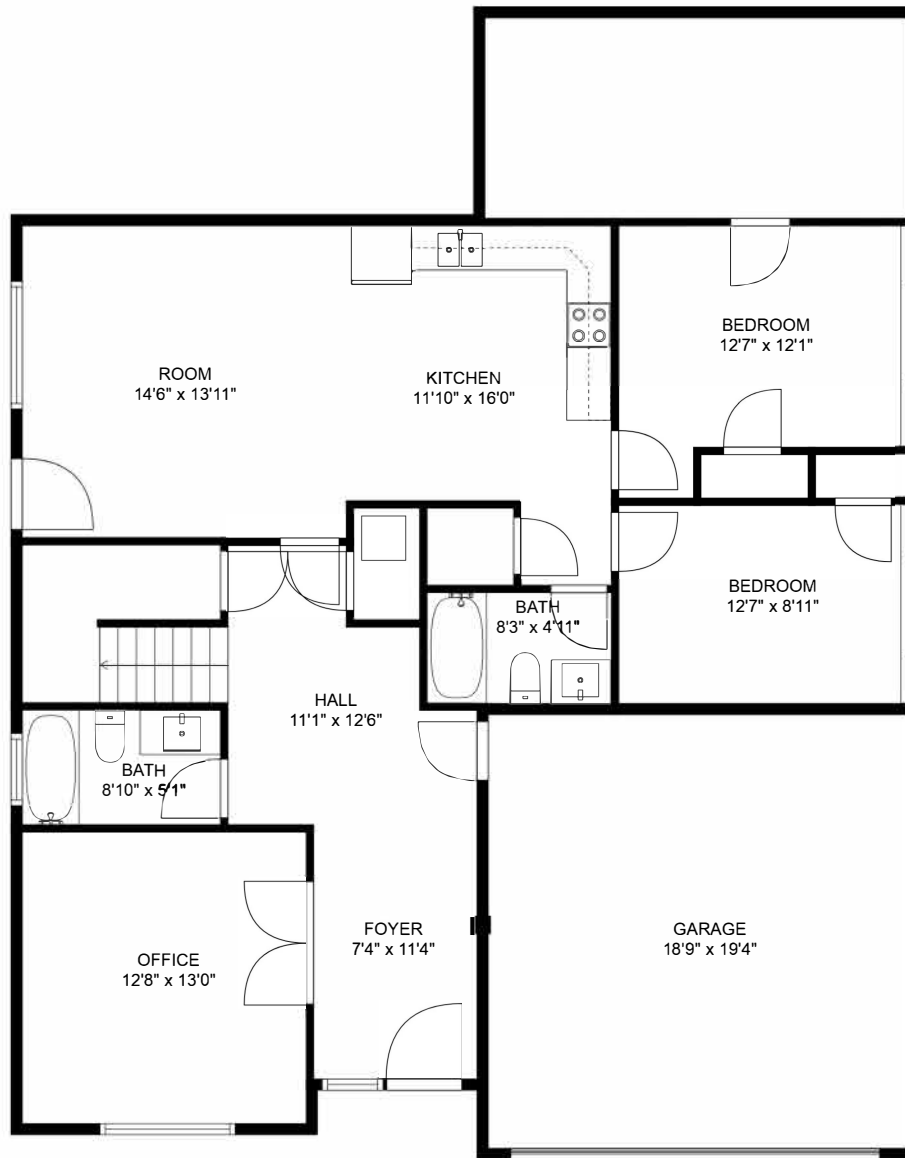
Sizes and dimensions may have a slight variation from actual sizes. E&O Insured.



**Estimated areas**

FLOOR 1: 1251 sq. ft  
 FLOOR 2: 1691 sq. ft  
 FLOOR 3: 1399 sq. ft  
 ROOF TOP PATIO: 580 sq. ft  
 Total: 4432 sq. ft

Sizes and dimensions may have a slight variation from actual sizes. E&O Insured.



**Estimated areas**

FLOOR 1: 1251 sq. ft  
 FLOOR 2: 1691 sq. ft  
 FLOOR 3: 1399 sq. ft  
 ROOF TOP PATIO: 580 sq. ft  
 Total: 4432 sq. ft

Sizes and dimensions may have a slight variation from actual sizes. E&O Insured.