

Home report

1901 Cattle Lane, Hidden Valley, Cave Spring, Roanoke,  
Roanoke County, Virginia, United States, 24018



Total Area: 3123 sq. ft

Floor 1: 1266 sq. ft, Floor 2: 1857 sq. ft, Floor 3: 0 sq. ft  
Excluded: Storage 492 sq. ft, Patio 311 sq. ft, Garage 596 sq. ft, Screened porch 218 sq. ft, Porch 46 sq. ft, Deck 230 sq. ft, Embedded window 11 sq. ft, Low ceiling 384 sq. ft, Attic 552 sq. ft, Walls: 319 sq. ft

Property summary

 **3** Floors

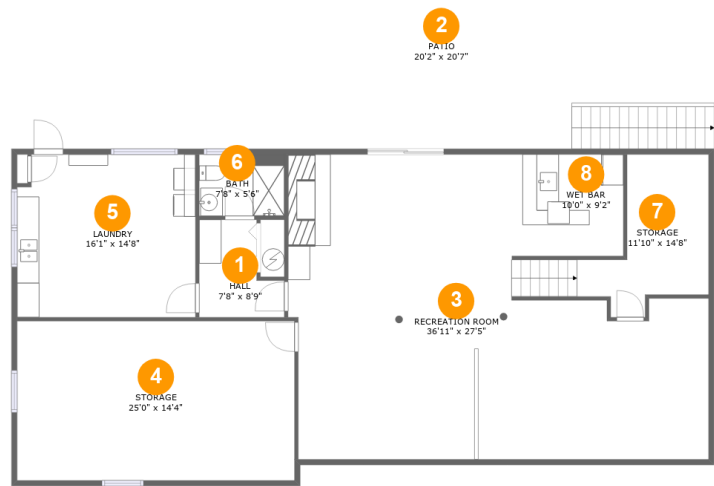
 **3** Bedrooms

 **3** Bathrooms

 **1** Garages

Home report

1901 Cattle Lane, Hidden Valley, Cave Spring, Roanoke,  
Roanoke County, Virginia, United States, 24018



Room dimensions

Floor 1 Total:1266sqft Excluded: 803sqft

#		Max Dimensions	sqft	Included
1	Hall	7'8" x 8'9"	54 sq. ft	Yes
2	Patio	20'2" x 20'7"	311 sq. ft	No
3	Recreation Room	36'11" x 27'5"	790 sq. ft	Yes
4	Storage	25'0" x 14'4"	359 sq. ft	No
5	Laundry	16'1" x 14'8"	232 sq. ft	Yes
6	Bath	7'8" x 5'6"	42 sq. ft	Yes
7	Storage	11'10" x 14'8"	133 sq. ft	No
8	Wet Bar	10'0" x 9'2"	92 sq. ft	Yes

Home report

1901 Cattle Lane, Hidden Valley, Cave Spring, Roanoke,  
Roanoke County, Virginia, United States, 24018



Room dimensions

Floor 2 Total:1857sqft Excluded: 1101sqft

#		Max Dimensions	sqft	Included
9	Primary Bedroom	14'6" x 14'4"	209 sq. ft	Yes
10	Deck	19'11" x 11'0"	230 sq. ft	No
11	Bedroom	11'0" x 12'5"	137 sq. ft	Yes
12	Garage	27'2" x 23'7"	596 sq. ft	No
13	Dining Area	10'9" x 14'4"	154 sq. ft	Yes
14	Kitchen	17'9" x 12'9"	192 sq. ft	Yes
15	Porch	8'8" x 5'10"	45 sq. ft	No
16	Hall	16'5" x 3'6"	57 sq. ft	Yes
17	Living Room	17'6" x 15'6"	259 sq. ft	Yes
18	Screened Porch	19'9" x 12'9"	218 sq. ft	No
19	Foyer	5'7" x 13'1"	73 sq. ft	Yes

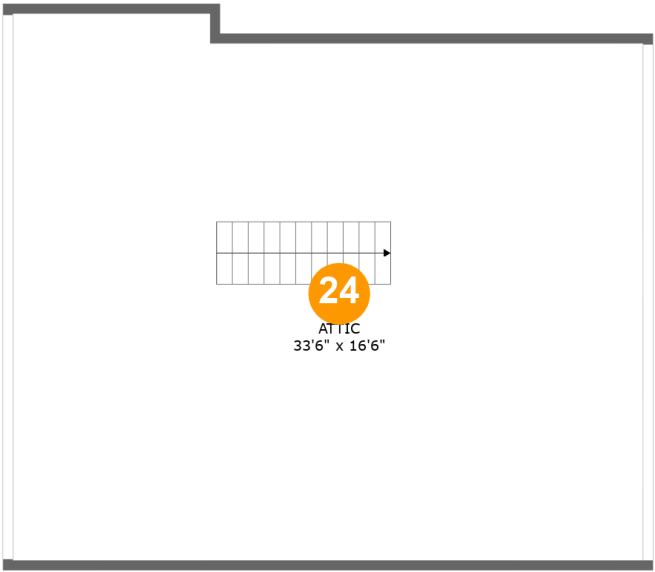
Home report

1901 Cantle Lane, Hidden Valley, Cave Spring, Roanoke,  
Roanoke County, Virginia, United States, 24018

#		Max Dimensions	sqft	Included
20	Bedroom	11'0" x 16'3"	162 sq. ft	Yes
21	Bath	9'0" x 5'8"	46 sq. ft	Yes
22	Bath	9'0" x 8'4"	65 sq. ft	Yes
23	Family Room	20'1" x 14'4"	288 sq. ft	Yes

Home report

1901 Cantle Lane, Hidden Valley, Cave Spring, Roanoke,  
Roanoke County, Virginia, United States, 24018



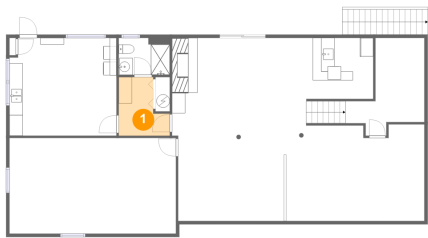
Room dimensions

Floor 3 Total:0sqft   Excluded: 936sqft

#		Max Dimensions	sqft	Included
24	Attic	33'6" x 16'6"	552 sq. ft	No

1901 Cattle Lane, Hidden Valley, Cave Spring, Roanoke,  
Roanoke County, Virginia, United States, 24018

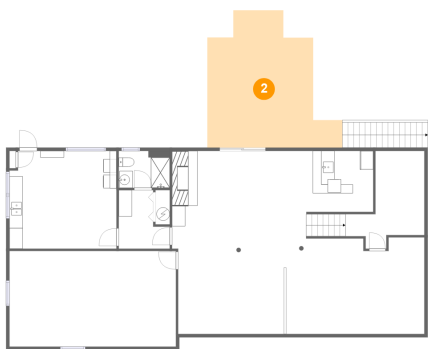
1 Floor 1 - Hall



Max Dimensions: 7'8" x 8'9"  
Calculated Area: 54 sq. ft  
Included: Yes

Heated: Yes  
Finished: Yes  
Enclosed: Yes  
Contiguous: Yes  
Permitted: Yes  
Wet space: No  
Addition: No  
Conversion: No

2 Floor 1 - Patio



Max Dimensions: 20'2" x  
20'7"  
Calculated Area: 311 sq. ft  
Included: No

Heated: No  
Finished: Yes  
Enclosed: No  
Contiguous:  
Yes  
Permitted: Yes  
Wet space: No  
Addition: No  
Conversion: No

1901 Cattle Lane, Hidden Valley, Cave Spring, Roanoke,  
Roanoke County, Virginia, United States, 24018

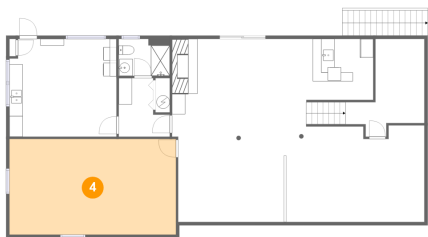
3 Floor 1 - Recreation Room



Max Dimensions: 36'11" x 27'5"  
Calculated Area: 790 sq. ft  
Included: Yes

Heated: Yes  
Finished: Yes  
Enclosed: Yes  
Contiguous: Yes  
Permitted: Yes  
Wet space: No  
Addition: No  
Conversion: No

4 Floor 1 - Storage



Max Dimensions: 25'0" x 14'4"  
Calculated Area: 359 sq. ft  
Included: No

Heated: No  
Finished: No  
Enclosed: No  
Contiguous: Yes  
Permitted: Yes  
Wet space: No  
Addition: No  
Conversion: No

5 Floor 1 - Laundry

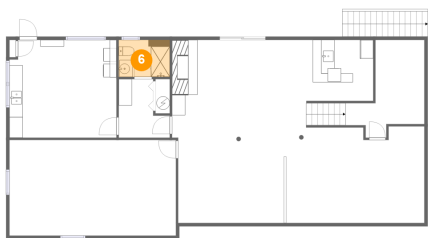


Max Dimensions: 16'1" x 14'8"  
Calculated Area: 232 sq. ft  
Included: Yes

Heated: Yes  
Finished: Yes  
Enclosed: Yes  
Contiguous: Yes  
Permitted: Yes  
Wet space: No  
Addition: No  
Conversion: No

1901 Cattle Lane, Hidden Valley, Cave Spring, Roanoke,  
Roanoke County, Virginia, United States, 24018

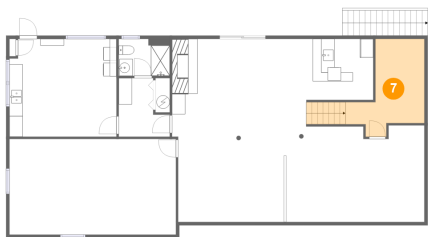
6 Floor 1 - Bath



Max Dimensions: 7'8" x 5'6"  
Calculated Area: 42 sq. ft  
Included: Yes

Heated: Yes  
Finished: Yes  
Enclosed: Yes  
Contiguous: Yes  
Permitted: Yes  
Wet space: Yes  
Addition: No  
Conversion: No

7 Floor 1 - Storage



Max Dimensions: 11'10" x 14'8"  
Calculated Area: 133 sq. ft  
Included: No

Heated: No  
Finished: No  
Enclosed: No  
Contiguous: No  
Permitted: Yes  
Wet space: No  
Addition: No  
Conversion: No

8 Floor 1 - Wet Bar



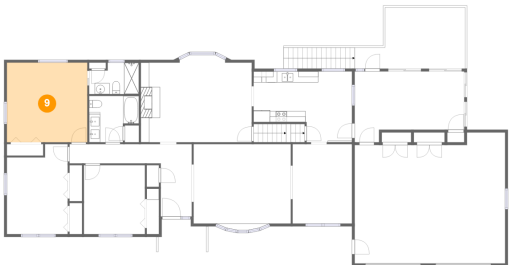
Max Dimensions: 10'0" x 9'2"  
Calculated Area: 92 sq. ft  
Included: Yes

Heated: Yes  
Finished: Yes  
Enclosed: Yes  
Contiguous: Yes  
Permitted: Yes  
Wet space: No  
Addition: No  
Conversion: No



1901 Cantle Lane, Hidden Valley, Cave Spring, Roanoke,  
Roanoke County, Virginia, United States, 24018

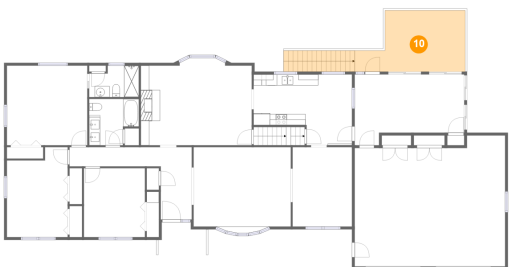
9 Floor 2 - Primary Bedroom



Max Dimensions: 14'6" x 14'4"  
Calculated Area: 209 sq. ft  
Included: Yes

Heated: Yes  
Finished: Yes  
Enclosed: Yes  
Contiguous: Yes  
Permitted: Yes  
Wet space: No  
Addition: No  
Conversion: No

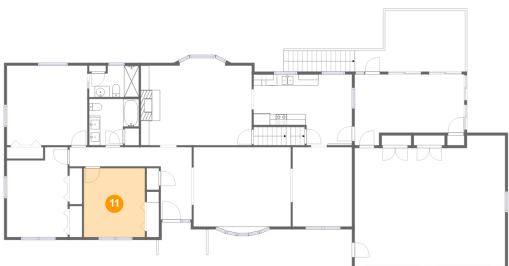
10 Floor 2 - Deck



Max Dimensions: 19'11" x 11'0"  
Calculated Area: 230 sq. ft  
Included: No

Heated: No  
Finished: Yes  
Enclosed: No  
Contiguous: Yes  
Permitted: Yes  
Wet space: No  
Addition: No  
Conversion: No

11 Floor 2 - Bedroom

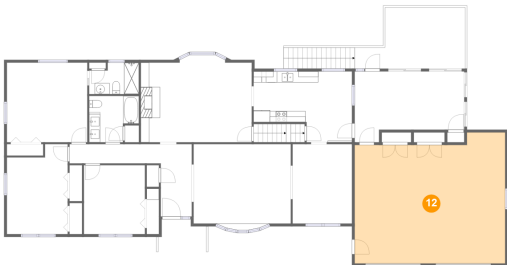


Max Dimensions: 11'0" x 12'5"  
Calculated Area: 137 sq. ft  
Included: Yes

Heated: Yes  
Finished: Yes  
Enclosed: Yes  
Contiguous: Yes  
Permitted: Yes  
Wet space: No  
Addition: No  
Conversion: No

1901 Cattle Lane, Hidden Valley, Cave Spring, Roanoke,  
Roanoke County, Virginia, United States, 24018

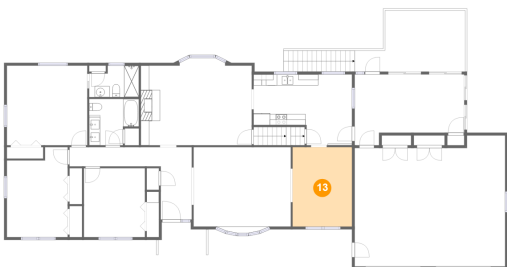
12 Floor 2 - Garage



Max Dimensions: 27'2" x 23'7"  
Calculated Area: 596 sq. ft  
Included: No

Heated: No  
Finished: No  
Enclosed: Yes  
Contiguous: Yes  
Permitted: Yes  
Wet space: No  
Addition: No  
Conversion: No

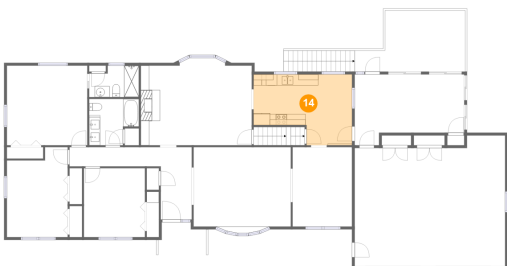
13 Floor 2 - Dining Area



Max Dimensions: 10'9" x 14'4"  
Calculated Area: 154 sq. ft  
Included: Yes

Heated: Yes  
Finished: Yes  
Enclosed: Yes  
Contiguous: Yes  
Permitted: Yes  
Wet space: No  
Addition: No  
Conversion: No

14 Floor 2 - Kitchen

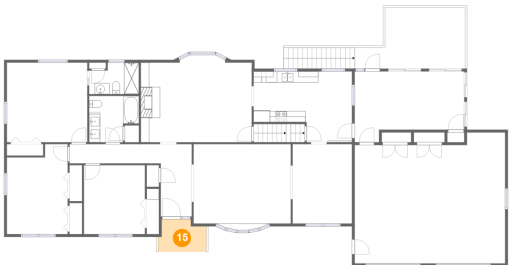


Max Dimensions: 17'9" x 12'9"  
Calculated Area: 192 sq. ft  
Included: Yes

Heated: Yes  
Finished: Yes  
Enclosed: Yes  
Contiguous: Yes  
Permitted: Yes  
Wet space: No  
Addition: No  
Conversion: No

1901 Cantle Lane, Hidden Valley, Cave Spring, Roanoke,  
Roanoke County, Virginia, United States, 24018

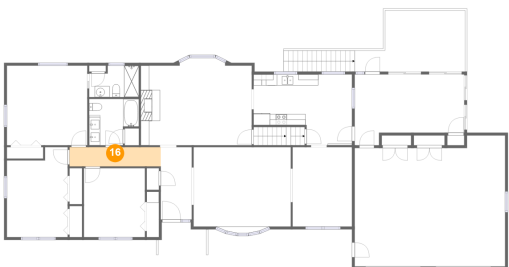
15 Floor 2 - Porch



Max Dimensions: 8'8" x 5'10"  
Calculated Area: 45 sq. ft  
Included: No

Heated: No  
Finished: Yes  
Enclosed: No  
Contiguous: Yes  
Permitted: Yes  
Wet space: No  
Addition: No  
Conversion: No

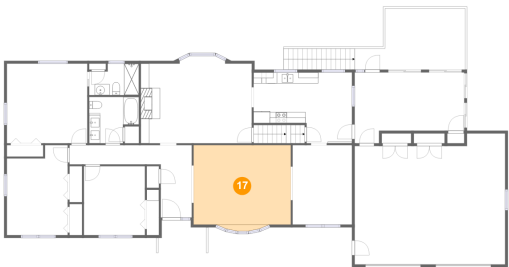
16 Floor 2 - Hall



Max Dimensions: 16'5" x 3'6"  
Calculated Area: 57 sq. ft  
Included: Yes

Heated: Yes  
Finished: Yes  
Enclosed: Yes  
Contiguous: Yes  
Permitted: Yes  
Wet space: No  
Addition: No  
Conversion: No

17 Floor 2 - Living Room

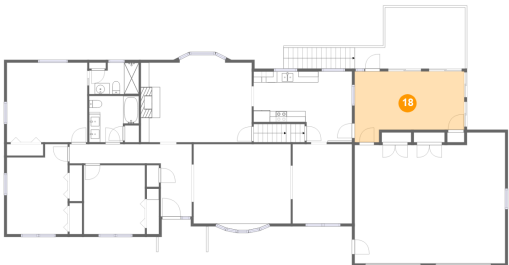


Max Dimensions: 17'6" x 15'6"  
Calculated Area: 259 sq. ft  
Included: Yes

Heated: Yes  
Finished: Yes  
Enclosed: Yes  
Contiguous: Yes  
Permitted: Yes  
Wet space: No  
Addition: No  
Conversion: No

1901 Cattle Lane, Hidden Valley, Cave Spring, Roanoke,  
Roanoke County, Virginia, United States, 24018

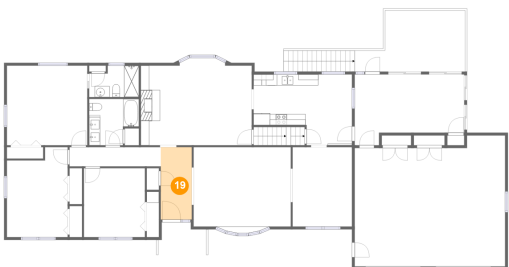
18 Floor 2 - Screened Porch



Max Dimensions: 19'9" x 12'9"  
Calculated Area: 218 sq. ft  
Included: No

Heated: No  
Finished: Yes  
Enclosed: No  
Contiguous: Yes  
Permitted: Yes  
Wet space: No  
Addition: No  
Conversion: No

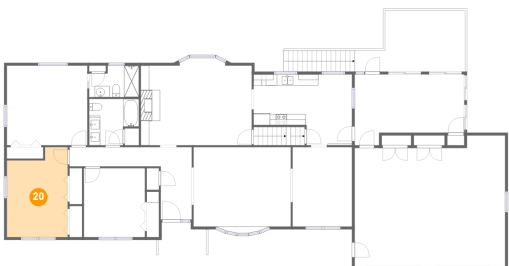
19 Floor 2 - Foyer



Max Dimensions: 5'7" x 13'1"  
Calculated Area: 73 sq. ft  
Included: Yes

Heated: Yes  
Finished: Yes  
Enclosed: Yes  
Contiguous: Yes  
Permitted: Yes  
Wet space: No  
Addition: No  
Conversion: No

20 Floor 2 - Bedroom

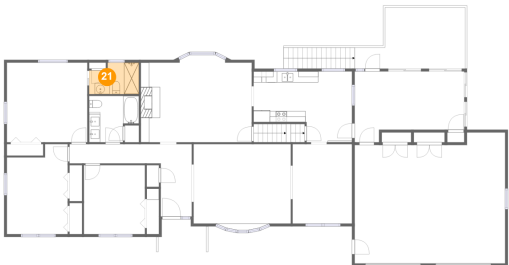


Max Dimensions: 11'0" x 16'3"  
Calculated Area: 162 sq. ft  
Included: Yes

Heated: Yes  
Finished: Yes  
Enclosed: Yes  
Contiguous: Yes  
Permitted: Yes  
Wet space: No  
Addition: No  
Conversion: No

1901 Cantle Lane, Hidden Valley, Cave Spring, Roanoke,  
Roanoke County, Virginia, United States, 24018

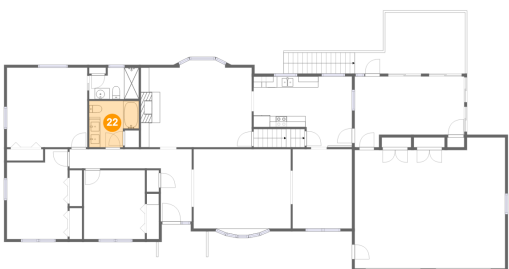
21 Floor 2 - Bath



Max Dimensions: 9'0" x 5'8"  
Calculated Area: 46 sq. ft  
Included: Yes

Heated: Yes  
Finished: Yes  
Enclosed: Yes  
Contiguous: Yes  
Permitted: Yes  
Wet space: Yes  
Addition: No  
Conversion: No

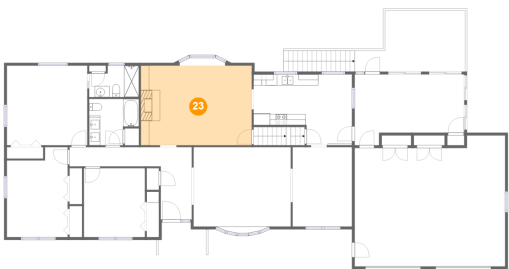
22 Floor 2 - Bath



Max Dimensions: 9'0" x 8'4"  
Calculated Area: 65 sq. ft  
Included: Yes

Heated: Yes  
Finished: Yes  
Enclosed: Yes  
Contiguous: Yes  
Permitted: Yes  
Wet space: Yes  
Addition: No  
Conversion: No

23 Floor 2 - Family Room

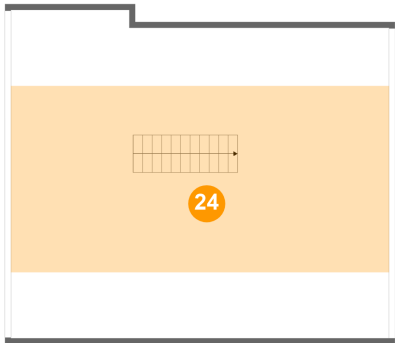


Max Dimensions: 20'1" x 14'4"  
Calculated Area: 288 sq. ft  
Included: Yes

Heated: Yes  
Finished: Yes  
Enclosed: Yes  
Contiguous: Yes  
Permitted: Yes  
Wet space: No  
Addition: No  
Conversion: No

1901 Cantle Lane, Hidden Valley, Cave Spring, Roanoke,  
Roanoke County, Virginia, United States, 24018

24 Floor 3 - Attic



Max Dimensions: 33'6" x  
16'6"  
Calculated Area: 552 sq. ft  
Included: No

Heated: No  
Finished: No  
Enclosed: Yes  
Contiguous:  
Yes  
Permitted: Yes  
Wet space: No  
Addition: No  
Conversion: No