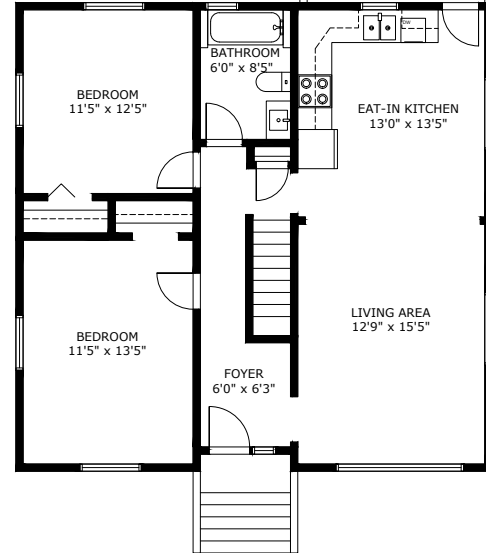
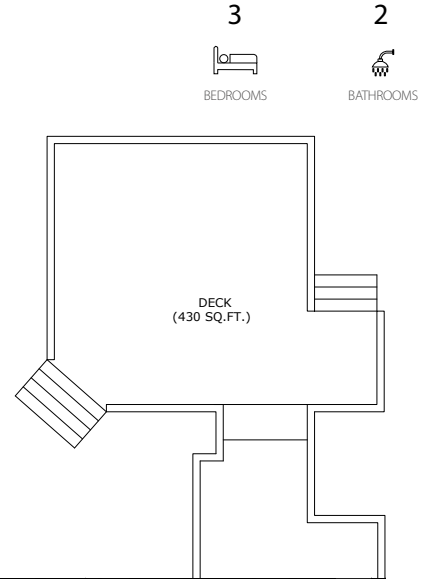
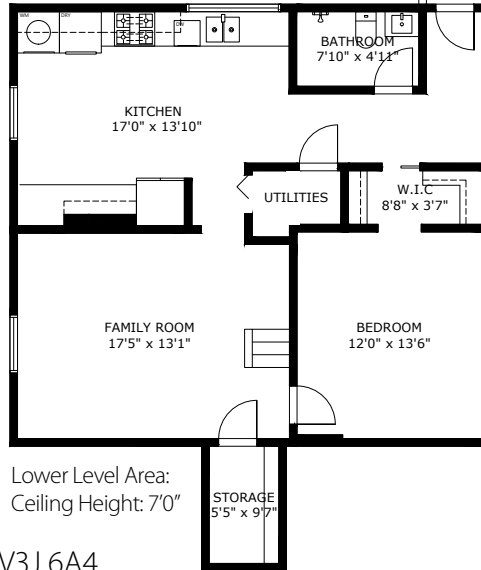


506 POIRIER ST

Coquitlam BC V3J 6A4

Lower Level Area: 970 SQ.FT.
Main Level Area: 920 SQ.FT.
Total Area 1,890 SQ.FT.

Patio Area: 430 SQ.FT.
Garage Area: 730 SQ.FT.



506 POIRIER ST COQUITLAM BC V3J 6A4

Measurements are approximate and may not be to scale. Gross measurements provided by agent.
The floor plan illustration is not suitable for construction/architectural purposes.
This communication is not intended to cause or induce breach of an existing agency agreement