

Home report

68 North Lowell Road, Windham, Rockingham County, New Hampshire, United States, 03087



Total Area: 2060 sq. ft
Below Ground: 112 sq. ft, Floor 2: 1948 sq. ft
Excluded: Basement 1116 sq. ft, Utility 294 sq. ft, Fireplace 13 sq. ft, Walls: 236 sq. ft

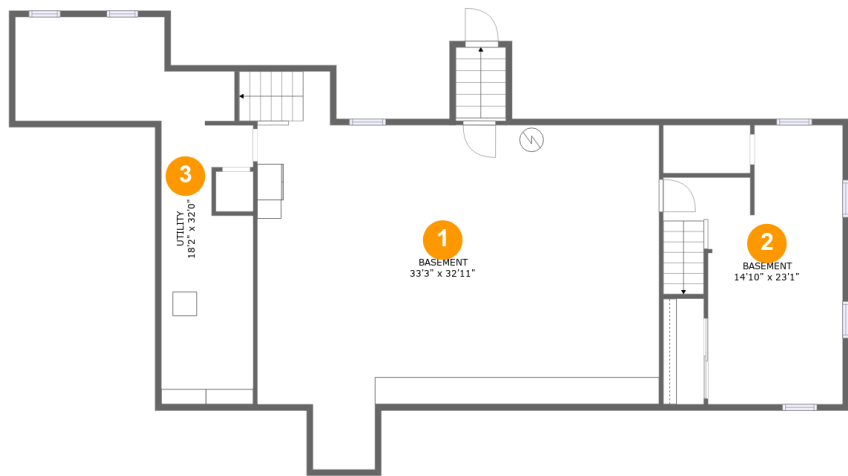
Property summary

 **2** Floors

 **3** Bedrooms

 **3** Bathrooms

68 North Lowell Road, Windham, Rockingham County, New Hampshire, United States, 03087



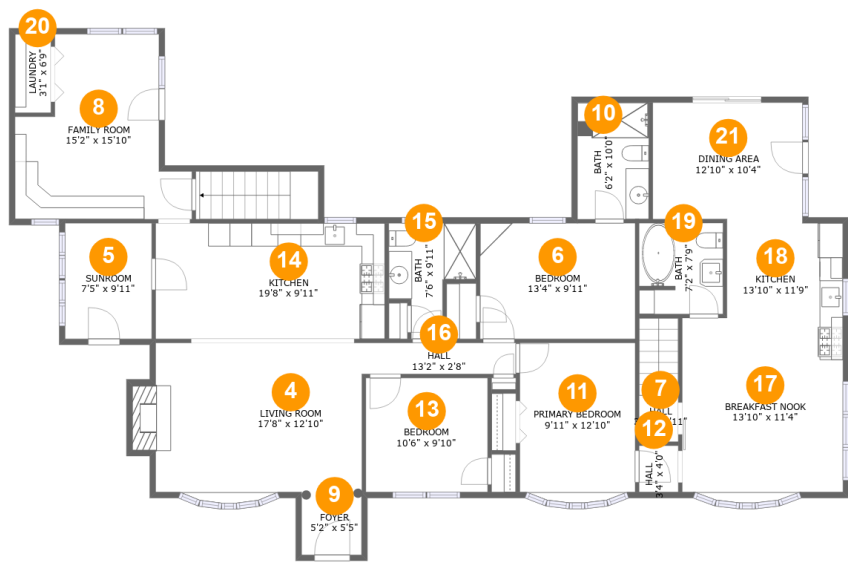
Room dimensions

Floor 1 Below ground Total:112sqft Excluded: 1410sqft

#		Max Dimensions	sqft	Included
1	Basement	33'3" x 32'11"	828 sq. ft	No
2	Basement	14'10" x 23'1"	274 sq. ft	No
3	Utility	18'2" x 32'0"	293 sq. ft	No

Home report

68 North Lowell Road, Windham, Rockingham County, New Hampshire, United States, 03087



Room dimensions

Floor 2 Total:1948sqft Excluded: 13sqft

#		Max Dimensions	sqft	Included
4	Living Room	17'8" x 12'10"	244 sq. ft	Yes
5	Sunroom	7'5" x 9'11"	74 sq. ft	Yes
6	Bedroom	13'4" x 9'11"	132 sq. ft	Yes
7	Hall	3'4" x 3'11"	37 sq. ft	Yes
8	Family Room	15'2" x 15'10"	184 sq. ft	Yes
9	Foyer	5'2" x 5'5"	28 sq. ft	Yes
10	Bath	6'2" x 10'0"	61 sq. ft	Yes
11	Primary Bedroom	9'11" x 12'10"	132 sq. ft	Yes
12	Hall	3'4" x 4'0"	13 sq. ft	Yes
13	Bedroom	10'6" x 9'10"	102 sq. ft	Yes
14	Kitchen	19'8" x 9'11"	196 sq. ft	Yes

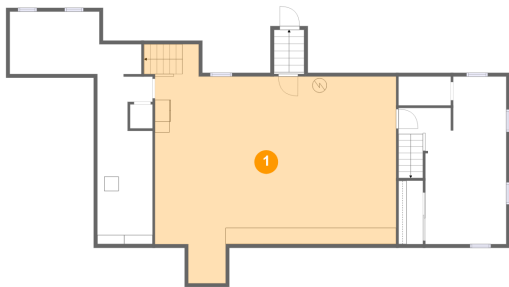
Home report

68 North Lowell Road, Windham, Rockingham County, New Hampshire, United States, 03087

#		Max Dimensions	sqft	Included
15	Bath	7'6" x 9'11"	53 sq. ft	Yes
16	Hall	13'2" x 2'8"	35 sq. ft	Yes
17	Breakfast Nook	13'10" x 11'4"	162 sq. ft	Yes
18	Kitchen	13'10" x 11'9"	132 sq. ft	Yes
19	Bath	7'2" x 7'9"	55 sq. ft	Yes
20	Laundry	3'1" x 6'9"	21 sq. ft	Yes
21	Dining Area	12'10" x 10'4"	131 sq. ft	Yes

68 North Lowell Road, Windham, Rockingham County, New Hampshire, United States, 03087

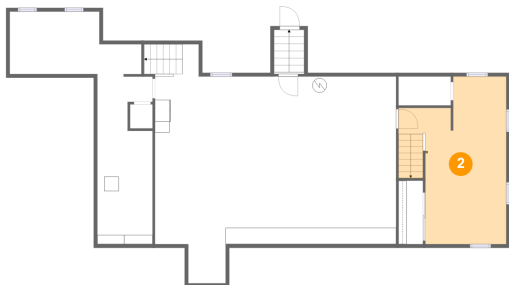
1 Floor 1 - Basement



Max Dimensions: 33'3" x 32'11"
Calculated Area: 828 sq. ft
Included: No

Heated: Yes
Finished: No
Enclosed: Yes
Contiguous: Yes
Permitted: Yes
Wet space: No
Addition: No
Conversion: No

2 Floor 1 - Basement

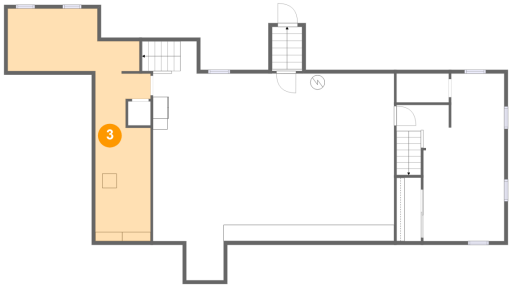


Max Dimensions: 14'10" x 23'1"
Calculated Area: 274 sq. ft
Included: No

Heated: Yes
Finished: No
Enclosed: Yes
Contiguous: Yes
Permitted: Yes
Wet space: No
Addition: No
Conversion: No

68 North Lowell Road, Windham, Rockingham County, New Hampshire, United States, 03087

3 Floor 1 - Utility



Max Dimensions: 18'2" x 32'0"
Calculated Area: 293 sq. ft
Included: No

Heated: Yes
Finished: No
Enclosed: Yes
Contiguous: Yes
Permitted: Yes
Wet space: No
Addition: No
Conversion: No

4 Floor 2 - Living Room



Max Dimensions: 17'8" x 12'10"
Calculated Area: 244 sq. ft
Included: Yes

Heated: Yes
Finished: Yes
Enclosed: Yes
Contiguous: Yes
Permitted: Yes
Wet space: No
Addition: No
Conversion: No

5 Floor 2 - Sunroom

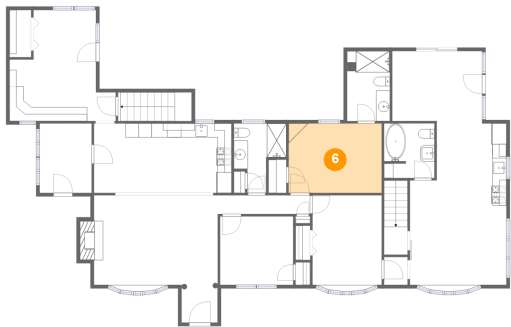


Max Dimensions: 7'5" x 9'11"
Calculated Area: 74 sq. ft
Included: Yes

Heated: Yes
Finished: Yes
Enclosed: Yes
Contiguous: Yes
Permitted: Yes
Wet space: No
Addition: No
Conversion: No

68 North Lowell Road, Windham, Rockingham County, New Hampshire, United States, 03087

6 Floor 2 - Bedroom



Max Dimensions: 13'4" x 9'11"
Calculated Area: 132 sq. ft
Included: Yes

Heated: Yes
Finished: Yes
Enclosed: Yes
Contiguous: Yes
Permitted: Yes
Wet space: No
Addition: No
Conversion: No

7 Floor 2 - Hall



Max Dimensions: 3'4" x 3'11"
Calculated Area: 37 sq. ft
Included: Yes

Heated: Yes
Finished: Yes
Enclosed: Yes
Contiguous: Yes
Permitted: Yes
Wet space: No
Addition: No
Conversion: No

8 Floor 2 - Family Room



Max Dimensions: 15'2" x 15'10"
Calculated Area: 184 sq. ft
Included: Yes

Heated: Yes
Finished: Yes
Enclosed: Yes
Contiguous: Yes
Permitted: Yes
Wet space: No
Addition: No
Conversion: No

68 North Lowell Road, Windham, Rockingham County, New Hampshire, United States, 03087

9 Floor 2 - Foyer



Max Dimensions: 5'2" x 5'5"
Calculated Area: 28 sq. ft
Included: Yes

Heated: Yes
Finished: Yes
Enclosed: Yes
Contiguous: Yes
Permitted: Yes
Wet space: No
Addition: No
Conversion: No

10 Floor 2 - Bath



Max Dimensions: 6'2" x 10'0"
Calculated Area: 61 sq. ft
Included: Yes

Heated: Yes
Finished: Yes
Enclosed: Yes
Contiguous: Yes
Permitted: Yes
Wet space: Yes
Addition: No
Conversion: No

11 Floor 2 - Primary Bedroom

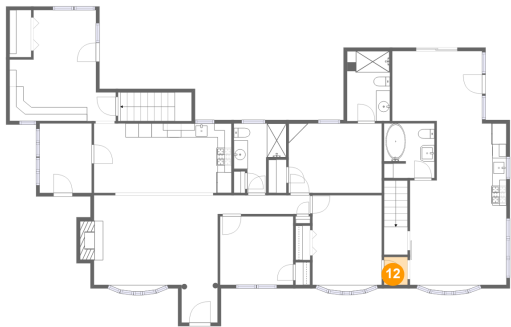


Max Dimensions: 9'11" x 12'10"
Calculated Area: 132 sq. ft
Included: Yes

Heated: Yes
Finished: Yes
Enclosed: Yes
Contiguous: Yes
Permitted: Yes
Wet space: No
Addition: No
Conversion: No

68 North Lowell Road, Windham, Rockingham County, New Hampshire, United States, 03087

12 Floor 2 - Hall



Max Dimensions: 3'4" x 4'0"
Calculated Area: 13 sq. ft
Included: Yes

Heated: Yes
Finished: Yes
Enclosed: Yes
Contiguous: Yes
Permitted: Yes
Wet space: No
Addition: No
Conversion: No

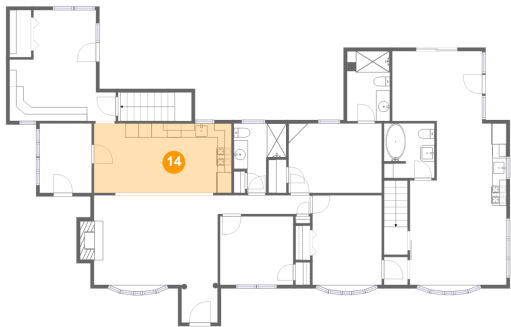
13 Floor 2 - Bedroom



Max Dimensions: 10'6" x 9'10"
Calculated Area: 102 sq. ft
Included: Yes

Heated: Yes
Finished: Yes
Enclosed: Yes
Contiguous: Yes
Permitted: Yes
Wet space: No
Addition: No
Conversion: No

14 Floor 2 - Kitchen



Max Dimensions: 19'8" x 9'11"
Calculated Area: 196 sq. ft
Included: Yes

Heated: Yes
Finished: Yes
Enclosed: Yes
Contiguous: Yes
Permitted: Yes
Wet space: No
Addition: No
Conversion: No

68 North Lowell Road, Windham, Rockingham County, New Hampshire, United States, 03087

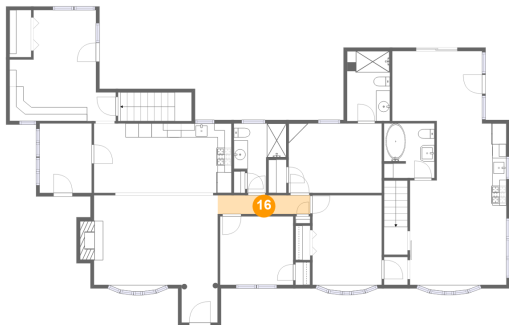
15 Floor 2 - Bath



Max Dimensions: 7'6" x 9'11"
Calculated Area: 53 sq. ft
Included: Yes

Heated: Yes
Finished: Yes
Enclosed: Yes
Contiguous: Yes
Permitted: Yes
Wet space: Yes
Addition: No
Conversion: No

16 Floor 2 - Hall



Max Dimensions: 13'2" x 2'8"
Calculated Area: 35 sq. ft
Included: Yes

Heated: Yes
Finished: Yes
Enclosed: Yes
Contiguous: Yes
Permitted: Yes
Wet space: No
Addition: No
Conversion: No

17 Floor 2 - Breakfast Nook



Max Dimensions: 13'10" x 11'4"
Calculated Area: 162 sq. ft
Included: Yes

Heated: Yes
Finished: Yes
Enclosed: Yes
Contiguous: Yes
Permitted: Yes
Wet space: No
Addition: No
Conversion: No

68 North Lowell Road, Windham, Rockingham County, New Hampshire, United States, 03087

18 Floor 2 - Kitchen



Max Dimensions: 13'10" x 11'9"
Calculated Area: 132 sq. ft
Included: Yes

Heated: Yes
Finished: Yes
Enclosed: Yes
Contiguous: Yes
Permitted: Yes
Wet space: No
Addition: No
Conversion: No

19 Floor 2 - Bath



Max Dimensions: 7'2" x 7'9"
Calculated Area: 55 sq. ft
Included: Yes

Heated: Yes
Finished: Yes
Enclosed: Yes
Contiguous: Yes
Permitted: Yes
Wet space: Yes
Addition: No
Conversion: No

20 Floor 2 - Laundry



Max Dimensions: 3'1" x 6'9"
Calculated Area: 21 sq. ft
Included: Yes

Heated: Yes
Finished: Yes
Enclosed: Yes
Contiguous: Yes
Permitted: Yes
Wet space: No
Addition: No
Conversion: No

68 North Lowell Road, Windham, Rockingham County, New Hampshire, United States, 03087

21 Floor 2 - Dining Area



Max Dimensions: 12'10" x 10'4"
Calculated Area: 131 sq. ft
Included: Yes

Heated: Yes
Finished: Yes
Enclosed: Yes
Contiguous: Yes
Permitted: Yes
Wet space: No
Addition: No
Conversion: No