



# 20 MANDERLEY DRIVE



Lainey Bonsell & Teresita Link

**LTHOME.ca**

*Bringing your dreams home.*

**ROYAL LEPAGE**  
Estate Realty  
MEMBER OF THE REALTOR ASSOCIATION OF CANADA



*For more information on*  
**20 MANDERLEY DRIVE**

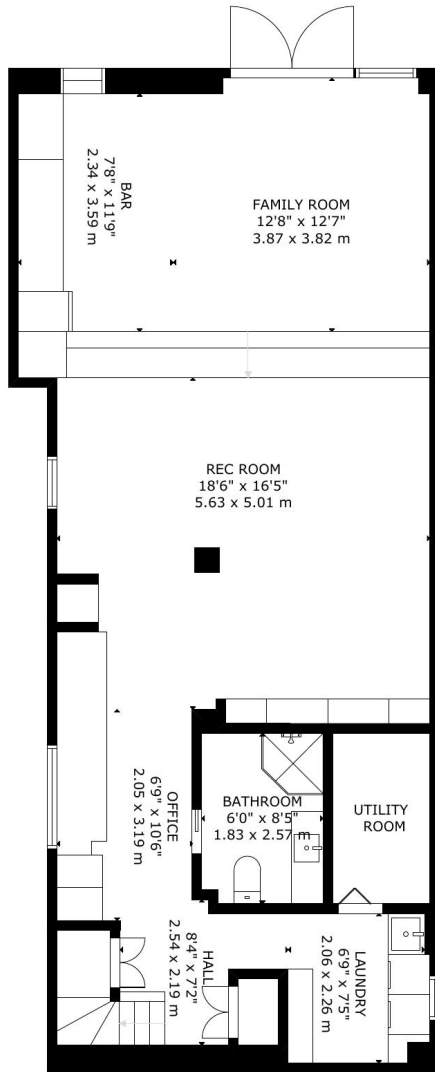




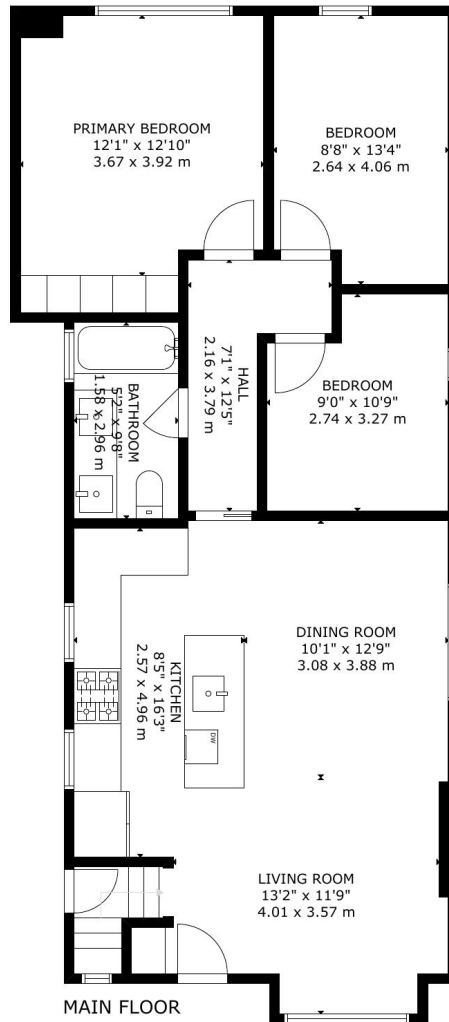
Visit

[www.LTHome.ca](http://www.LTHome.ca)





LOWER FLOOR



MAIN FLOOR

GROSS INTERNAL AREA  
 LOWER FLOOR: 84 m<sup>2</sup>/911 sq ft, MAIN FLOOR: 86 m<sup>2</sup>/932 sq ft  
 TOTAL: 170 m<sup>2</sup>/1,843 sq ft  
 SIZE AND DIMENSIONS ARE APPROXIMATE, ACTUAL MAY VARY

Not intended to solicit buyers or sellers currently under contract with another Brokerage



Lainey Bonsell & Teresita Link

LTHOME.ca

Bringing your dreams home.

Presented by:

Lainey Bonsell, Broker

Royal LePage Estate Realty, Brokerage

Lainey@LTHome.ca

416-526-9970