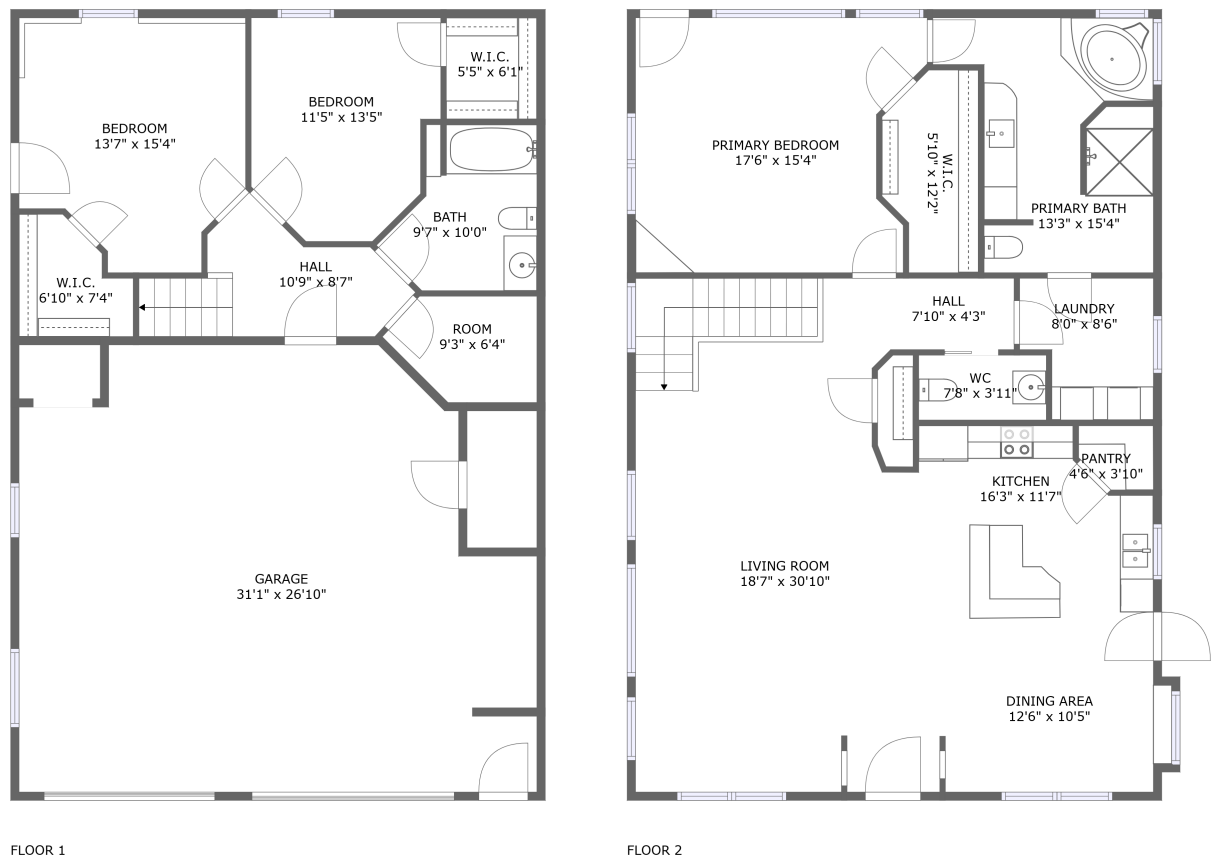




Home report


1565 Hillside Dr,Spearfish,SD,US




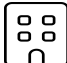
Property summary


 **1** Garages


 **3** Bedrooms

 **2** Bathrooms

 **1** Half baths

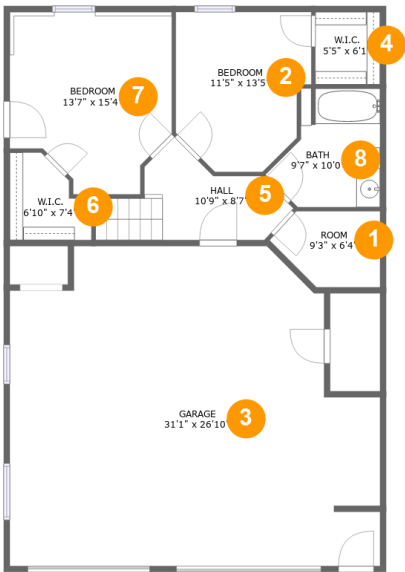
 **2** Floors

 **2,210** Gross living area sqft

 **3,058** Total sqft

Home report

1565 Hillside Dr,Spearfish,SD,US



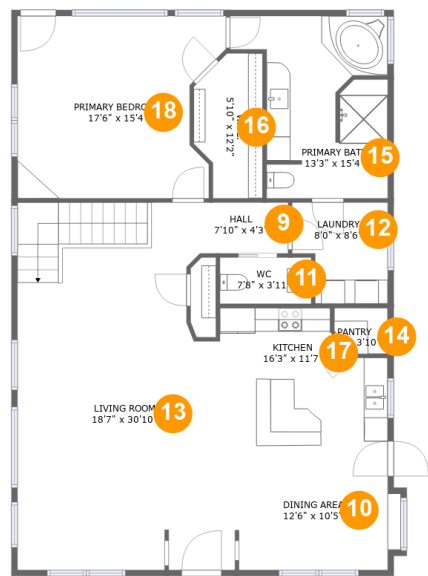
Room dimensions

Floor 1Total sqft: 1527 Living area: 679

#		Dimensions	sqft	Counted as living area
1	Room	9'3" x 6'4"	49 sq. ft	Yes
2	Bedroom	11'5" x 13'5"	135 sq. ft	Yes
3	Garage	31'1" x 26'10"	743 sq. ft	No
4	W.I.C.	5'5" x 6'1"	33 sq. ft	Yes
5	Hall	10'9" x 8'7"	85 sq. ft	Yes
6	W.I.C.	6'10" x 7'4"	40 sq. ft	Yes
7	Bedroom	13'7" x 15'4"	181 sq. ft	Yes
8	Bath	9'7" x 10'0"	74 sq. ft	Yes

Home report

1565 Hillside Dr,Spearfish,SD,US

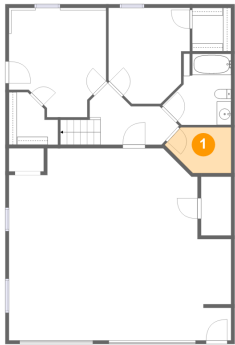


Room dimensions

Floor 2 Total sqft: 1531 Living area: 1531

#		Dimensions	sqft	Counted as living area
9	Hall	7'10" x 4'3"	34 sq. ft	Yes
10	Dining Area	12'6" x 10'5"	135 sq. ft	Yes
11	WC	7'8" x 3'11"	30 sq. ft	Yes
12	Laundry	8'0" x 8'6"	60 sq. ft	Yes
13	Living Room	18'7" x 30'10"	513 sq. ft	Yes
14	Pantry	4'6" x 3'10"	15 sq. ft	Yes
15	Primary Bath	13'3" x 15'4"	160 sq. ft	Yes
16	W.I.C.	5'10" x 12'2"	61 sq. ft	Yes
17	Kitchen	16'3" x 11'7"	145 sq. ft	Yes
18	Primary Bedroom	17'6" x 15'4"	241 sq. ft	Yes

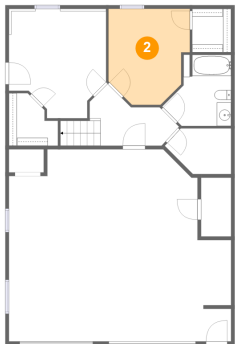
1 Floor 1 - Room



Dimensions: 9'3" x 6'4"
Area: 49 sq. ft
Counted as living area: Yes

Heated: Yes
Finished: Yes
Enclosed: Yes
Contiguous: Yes
Permitted: Yes
Wet space: No
Addition: No
Conversion: No

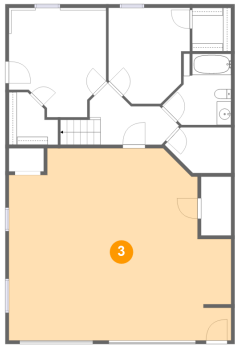
2 Floor 1 - Bedroom



Dimensions: 11'5" x 13'5"
Area: 135 sq. ft
Counted as living area: Yes

Heated: Yes
Finished: Yes
Enclosed: Yes
Contiguous: Yes
Permitted: Yes
Wet space: No
Addition: No
Conversion: No

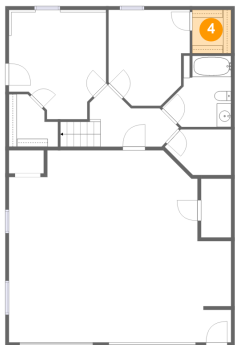
3 Floor 1 - Garage



Dimensions: 31'1" x 26'10"
Area: 743 sq. ft
Counted as living area: No

Heated: No
Finished: No
Enclosed: Yes
Contiguous: Yes
Permitted: Yes
Wet space: No
Addition: No
Conversion: No

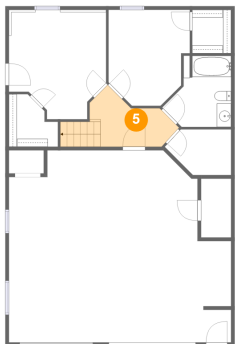
4 Floor 1 - W.I.C.



Dimensions: 5'5" x 6'1"
Area: 33 sq. ft
Counted as living area: Yes

Heated: Yes
Finished: Yes
Enclosed: Yes
Contiguous: Yes
Permitted: Yes
Wet space: No
Addition: No
Conversion: No

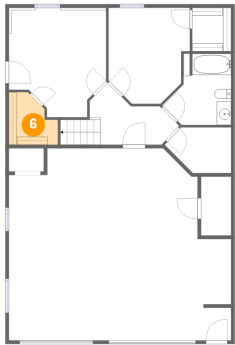
5 Floor 1 - Hall



Dimensions: 10'9" x 8'7"
Area: 85 sq. ft
Counted as living area: Yes

Heated: Yes
Finished: Yes
Enclosed: Yes
Contiguous: Yes
Permitted: Yes
Wet space: No
Addition: No
Conversion: No

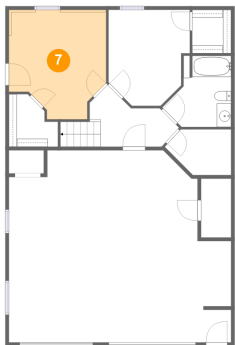
6 Floor 1 - W.I.C.



Dimensions: 6'10" x 7'4"
Area: 40 sq. ft
Counted as living area: Yes

Heated: Yes
Finished: Yes
Enclosed: Yes
Contiguous: Yes
Permitted: Yes
Wet space: No
Addition: No
Conversion: No

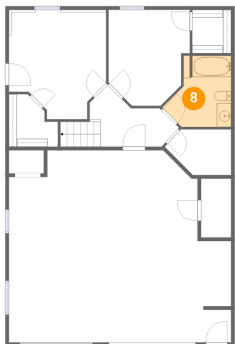
7 Floor 1 - Bedroom



Dimensions: 13'7" x 15'4"
Area: 181 sq. ft
Counted as living area: Yes

Heated: Yes
Finished: Yes
Enclosed: Yes
Contiguous: Yes
Permitted: Yes
Wet space: No
Addition: No
Conversion: No

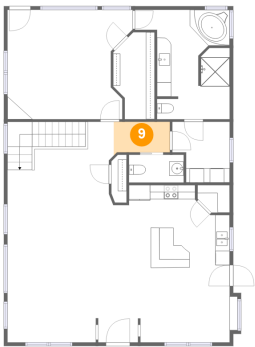
8 Floor 1 - Bath



Dimensions: 9'7" x 10'0"
Area: 74 sq. ft
Counted as living area: Yes

Heated: Yes
Finished: Yes
Enclosed: Yes
Contiguous: Yes
Permitted: Yes
Wet space: Yes
Addition: No
Conversion: No

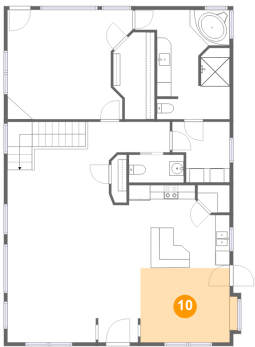
9 Floor 2 - Hall



Dimensions: 7'10" x 4'3"
Area: 34 sq. ft
Counted as living area: Yes

Heated: Yes
Finished: Yes
Enclosed: Yes
Contiguous: Yes
Permitted: Yes
Wet space: No
Addition: No
Conversion: No

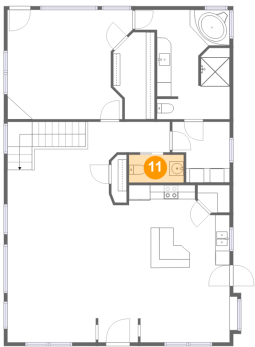
10 Floor 2 - Dining Area



Dimensions: 12'6" x 10'5"
Area: 135 sq. ft
Counted as living area: Yes

Heated: Yes
Finished: Yes
Enclosed: Yes
Contiguous: Yes
Permitted: Yes
Wet space: No
Addition: No
Conversion: No

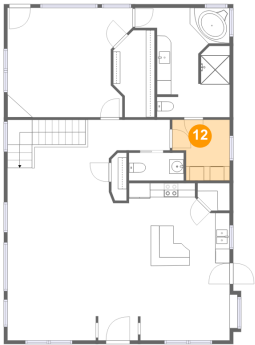
11 Floor 2 - WC



Dimensions: 7'8" x 3'11"
Area: 30 sq. ft
Counted as living area: Yes

Heated: Yes
Finished: Yes
Enclosed: Yes
Contiguous: Yes
Permitted: Yes
Wet space: Yes
Addition: No
Conversion: No

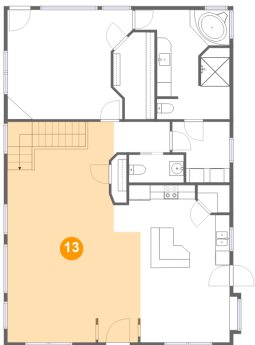
12 Floor 2 - Laundry



Dimensions: 8'0" x 8'6"
Area: 60 sq. ft
Counted as living area: Yes

Heated: Yes
Finished: Yes
Enclosed: Yes
Contiguous: Yes
Permitted: Yes
Wet space: No
Addition: No
Conversion: No

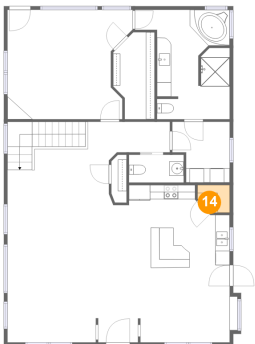
13 Floor 2 - Living Room



Dimensions: 18'7" x 30'10"
Area: 513 sq. ft
Counted as living area: Yes

Heated: Yes
Finished: Yes
Enclosed: Yes
Contiguous: Yes
Permitted: Yes
Wet space: No
Addition: No
Conversion: No

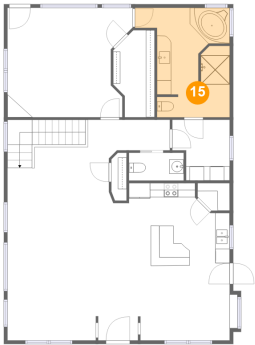
14 Floor 2 - Pantry



Dimensions: 4'6" x 3'10"
Area: 15 sq. ft
Counted as living area: Yes

Heated: Yes
Finished: Yes
Enclosed: Yes
Contiguous: Yes
Permitted: Yes
Wet space: No
Addition: No
Conversion: No

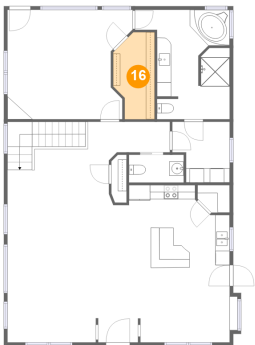
15 Floor 2 - Primary Bath



Dimensions: 13'3" x 15'4"
Area: 160 sq. ft
Counted as living area: Yes

Heated: Yes
Finished: Yes
Enclosed: Yes
Contiguous: Yes
Permitted: Yes
Wet space: Yes
Addition: No
Conversion: No

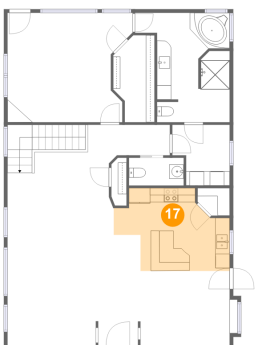
16 Floor 2 - W.I.C.



Dimensions: 5'10" x 12'2"
Area: 61 sq. ft
Counted as living area: Yes

Heated: Yes
Finished: Yes
Enclosed: Yes
Contiguous: Yes
Permitted: Yes
Wet space: No
Addition: No
Conversion: No

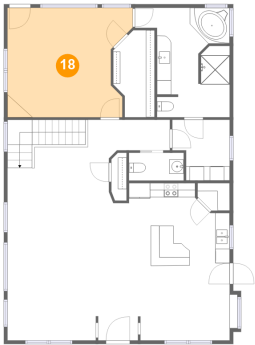
17 Floor 2 - Kitchen



Dimensions: 16'3" x 11'7"
Area: 145 sq. ft
Counted as living area: Yes

Heated: Yes
Finished: Yes
Enclosed: Yes
Contiguous: Yes
Permitted: Yes
Wet space: No
Addition: No
Conversion: No

18 Floor 2 - Primary Bedroom



Dimensions: 17'6" x 15'4"
Area: 241 sq. ft
Counted as living area: Yes

Heated: Yes
Finished: Yes
Enclosed: Yes
Contiguous: Yes
Permitted: Yes
Wet space: No
Addition: No
Conversion: No