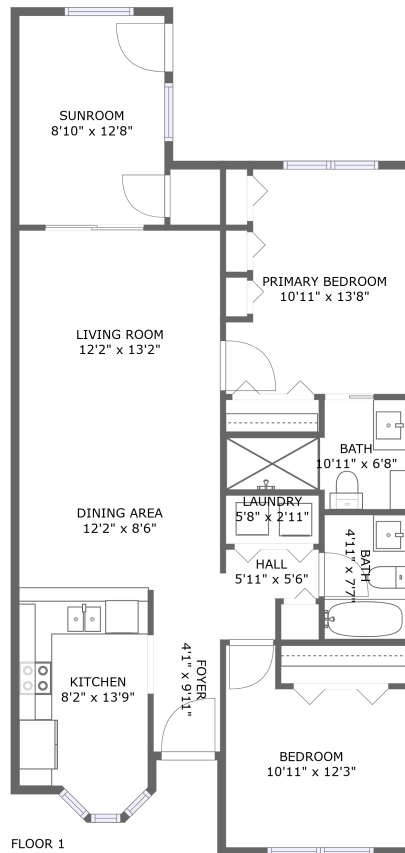



140 Brighton Court, Safety Harbor, Pinellas County, Florida, United States, 34695



Property summary

 **0** Garages

 **2** Bedrooms

 **2** Bathrooms

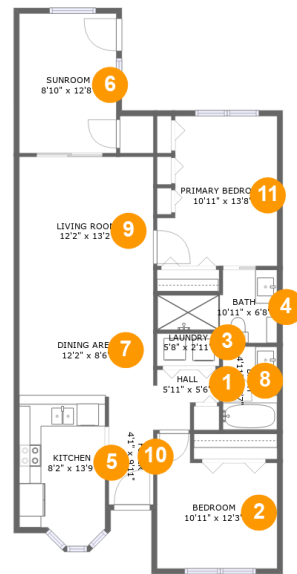
 **0** Half baths

 **1** Floors

 **1,052** Gross living area sqft

 **1,052** Total sqft

140 Brighton Court, Safety Harbor, Pinellas County, Florida, United States, 34695



Room dimensions

Floor 1

Total sqft: 1052

Living area: 1052

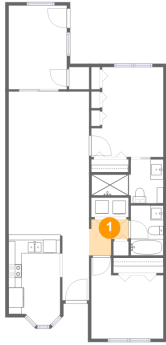
| # | | Dimensions | sqft | Counted as living area |
|----|-------------|----------------|------------|------------------------|
| 1 | Hall | 5'11" x 5'6" | 26 sq. ft | Yes |
| 2 | Bedroom | 10'11" x 12'3" | 113 sq. ft | Yes |
| 3 | Utility | 5'8" x 2'11" | 17 sq. ft | Yes |
| 4 | Bath | 10'11" x 6'8" | 52 sq. ft | Yes |
| 5 | Kitchen | 8'2" x 13'9" | 103 sq. ft | Yes |
| 6 | Room | 8'10" x 12'8" | 112 sq. ft | Yes |
| 7 | Dining Room | 12'2" x 8'6" | 104 sq. ft | Yes |
| 8 | Bath | 4'11" x 7'7" | 37 sq. ft | Yes |
| 9 | Living Room | 12'2" x 13'2" | 161 sq. ft | Yes |
| 10 | Entry | 4'1" x 9'11" | 40 sq. ft | Yes |
| 11 | Bedroom | 10'11" x 13'8" | 134 sq. ft | Yes |

Scan captured on Mon, 04 Nov 2024 23:55:40 GMT

Information is calculated by Cubicasa technology deemed highly reliable but not guaranteed.

140 Brighton Court, Safety Harbor, Pinellas County, Florida, United States, 34695

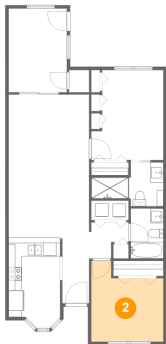
1 Floor 1 - Hall



Dimensions: 5'11" x 5'6"
Area: 26 sq. ft
Counted as living area: Yes

Heated: Yes
Finished: Yes
Enclosed: Yes
Contiguous: Yes
Permitted: Yes
Wet space: No
Addition: No
Conversion: No

2 Floor 1 - Bedroom



Dimensions: 10'11" x 12'3"
Area: 113 sq. ft
Counted as living area: Yes

Heated: Yes
Finished: Yes
Enclosed: Yes
Contiguous: Yes
Permitted: Yes
Wet space: No
Addition: No
Conversion: No

140 Brighton Court, Safety Harbor, Pinellas County, Florida, United States, 34695

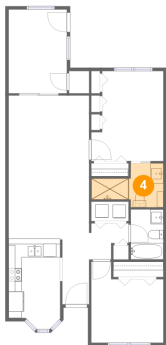
3 Floor 1 - Utility



Dimensions: 5'8" x 2'11"
Area: 17 sq. ft
Counted as living area: Yes

Heated: Yes
Finished: Yes
Enclosed: Yes
Contiguous: Yes
Permitted: Yes
Wet space: No
Addition: No
Conversion: No

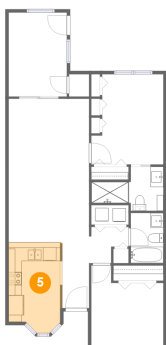
4 Floor 1 - Bath



Dimensions: 10'11" x 6'8"
Area: 52 sq. ft
Counted as living area: Yes

Heated: Yes
Finished: Yes
Enclosed: Yes
Contiguous: Yes
Permitted: Yes
Wet space: Yes
Addition: No
Conversion: No

5 Floor 1 - Kitchen

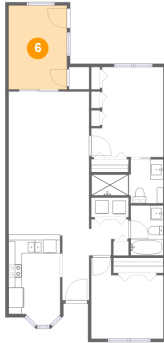


Dimensions: 8'2" x 13'9"
Area: 103 sq. ft
Counted as living area: Yes

Heated: Yes
Finished: Yes
Enclosed: Yes
Contiguous: Yes
Permitted: Yes
Wet space: No
Addition: No
Conversion: No

140 Brighton Court, Safety Harbor, Pinellas County, Florida, United States, 34695

6 Floor 1 - Room



Dimensions: 8'10" x 12'8"
Area: 112 sq. ft
Counted as living area: Yes

Heated: Yes
Finished: Yes
Enclosed: Yes
Contiguous: Yes
Permitted: Yes
Wet space: No
Addition: No
Conversion: No

7 Floor 1 - Dining Room



Dimensions: 12'2" x 8'6"
Area: 104 sq. ft
Counted as living area: Yes

Heated: Yes
Finished: Yes
Enclosed: Yes
Contiguous: Yes
Permitted: Yes
Wet space: No
Addition: No
Conversion: No

8 Floor 1 - Bath

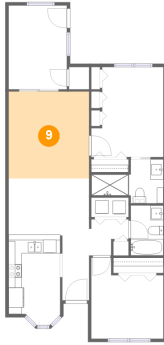


Dimensions: 4'11" x 7'7"
Area: 37 sq. ft
Counted as living area: Yes

Heated: Yes
Finished: Yes
Enclosed: Yes
Contiguous: Yes
Permitted: Yes
Wet space: Yes
Addition: No
Conversion: No

140 Brighton Court, Safety Harbor, Pinellas County, Florida, United States, 34695

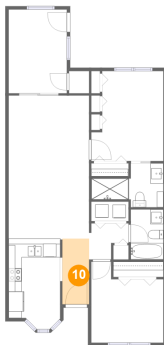
9 Floor 1 - Living Room



Dimensions: 12'2" x 13'2"
Area: 161 sq. ft
Counted as living area: Yes

Heated: Yes
Finished: Yes
Enclosed: Yes
Contiguous: Yes
Permitted: Yes
Wet space: No
Addition: No
Conversion: No

10 Floor 1 - Entry



Dimensions: 4'1" x 9'11"
Area: 40 sq. ft
Counted as living area: Yes

Heated: Yes
Finished: Yes
Enclosed: Yes
Contiguous: Yes
Permitted: Yes
Wet space: No
Addition: No
Conversion: No

11 Floor 1 - Bedroom



Dimensions: 10'11" x 13'8"
Area: 134 sq. ft
Counted as living area: Yes

Heated: Yes
Finished: Yes
Enclosed: Yes
Contiguous: Yes
Permitted: Yes
Wet space: No
Addition: No
Conversion: No