

Home report

729 Irwin Dr,Pittsburgh,PA,US



Property summary



1

Garages



3

Bedrooms



2

Bathrooms



1

Half baths



3

Floors



1,982

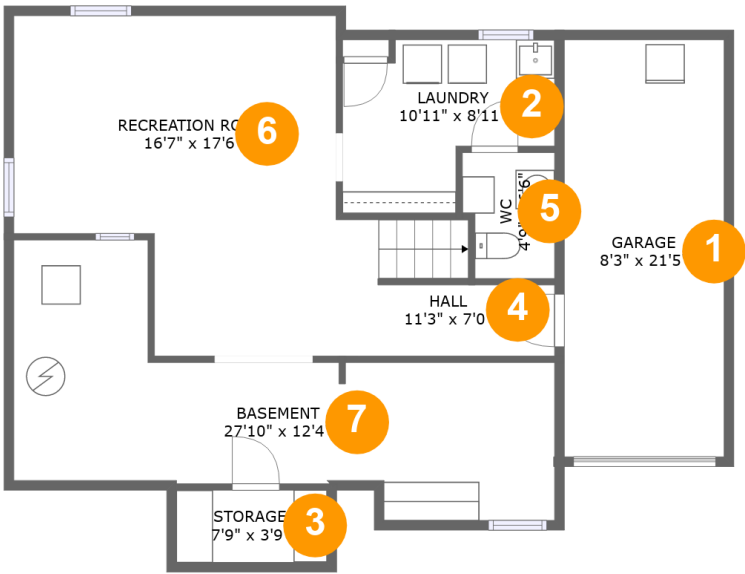
Gross living  
area sqft



2,929

Total sqft

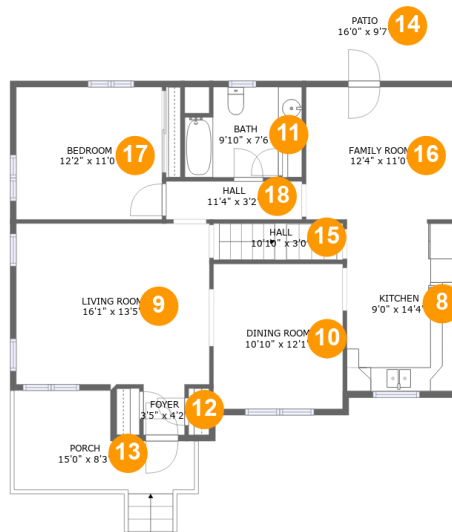
729 Irwin Dr,Pittsburgh,PA,US



Room dimensions

Floor 1 Total sqft: 957    Living area: 468

#		Dimensions	sqft	Counted as living area
1	Garage	8'3" x 21'5"	176 sq. ft	No
2	Laundry	10'11" x 8'11"	77 sq. ft	Yes
3	Storage	7'9" x 3'9"	29 sq. ft	No
4	Hall	11'3" x 7'0"	62 sq. ft	Yes
5	WC	4'9" x 6'6"	29 sq. ft	Yes
6	Recreation Room	16'7" x 17'6"	245 sq. ft	Yes
7	Basement	27'10" x 12'4"	231 sq. ft	No

**729 Irwin Dr,Pittsburgh,PA,US**

## Room dimensions

Floor 2

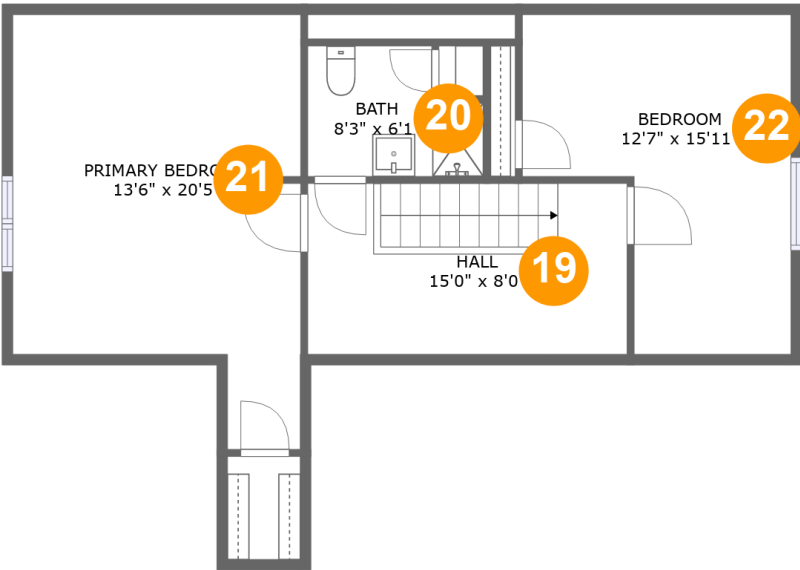
Total sqft: 1294    Living area: 1033

#		Dimensions	sqft	Counted as living area
8	Kitchen	9'0" x 14'4"	128 sq. ft	Yes
9	Living Room	16'1" x 13'5"	216 sq. ft	Yes
10	Dining Room	10'10" x 12'1"	131 sq. ft	Yes
11	Bath	9'10" x 7'6"	62 sq. ft	Yes
12	Foyer	3'5" x 4'2"	14 sq. ft	Yes
13	Porch	15'0" x 8'3"	108 sq. ft	No
14	Patio	16'0" x 9'7"	153 sq. ft	No
15	Hall	10'10" x 3'0"	33 sq. ft	Yes
16	Family Room	12'4" x 11'0"	136 sq. ft	Yes
17	Bedroom	12'2" x 11'0"	134 sq. ft	Yes
18	Hall	11'4" x 3'2"	36 sq. ft	Yes

Scan captured on Sun, 30 Mar 2025 16:10:30 GMT

Information is calculated by Cubicasa technology deemed highly reliable but not guaranteed.

729 Irwin Dr,Pittsburgh,PA,US



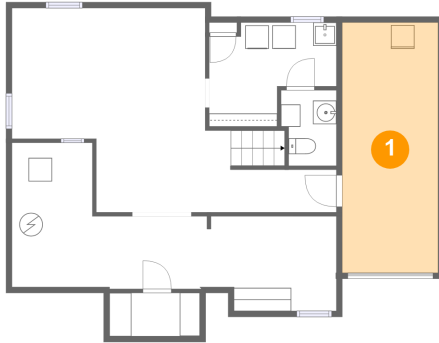
Room dimensions

Floor 3 Total sqft: 678    Living area: 481

#		Dimensions	sqft	Counted as living area
19	Hall	15'0" x 8'0"	91 sq. ft	Yes
20	Bath	8'3" x 6'1"	39 sq. ft	Yes
21	Primary Bedroom	13'6" x 20'5"	169 sq. ft	Yes
22	Bedroom	12'7" x 15'11"	113 sq. ft	Yes

729 Irwin Dr,Pittsburgh,PA,US

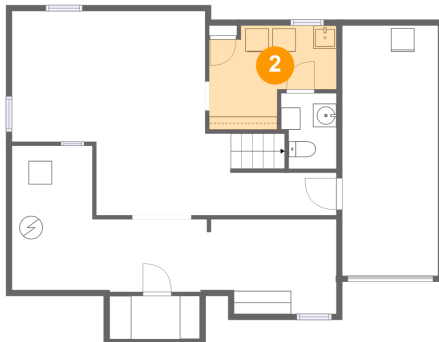
## 1 Floor 1 - Garage



Dimensions: 8'3" x 21'5"  
Area: 176 sq. ft  
Counted as living area: No

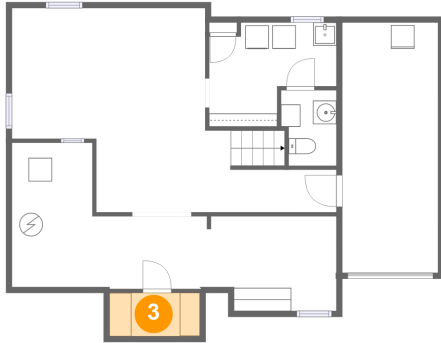
Heated: No  
Finished: No  
Enclosed: Yes  
Contiguous: Yes  
Permitted: Yes  
Wet space: No  
Addition: No  
Conversion: No

## 2 Floor 1 - Laundry



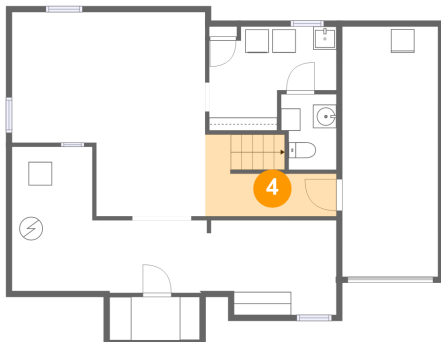
Dimensions: 10'11" x 8'11"  
Area: 77 sq. ft  
Counted as living area: Yes

Heated: Yes  
Finished: Yes  
Enclosed: Yes  
Contiguous: Yes  
Permitted: Yes  
Wet space: No  
Addition: No  
Conversion: No

**729 Irwin Dr, Pittsburgh, PA, US****3 Floor 1 - Storage**

Dimensions: 7'9" x 3'9"  
Area: 29 sq. ft  
Counted as living area: No

Heated: No  
Finished: No  
Enclosed: No  
Contiguous: Yes  
Permitted: Yes  
Wet space: No  
Addition: No  
Conversion: No

**4 Floor 1 - Hall**

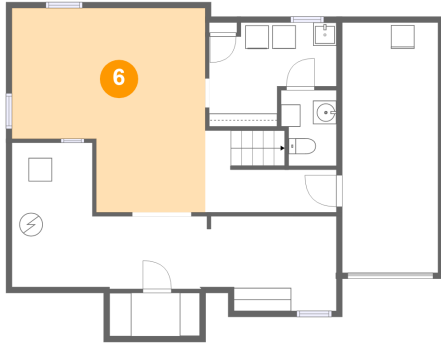
Dimensions: 11'3" x 7'0"  
Area: 62 sq. ft  
Counted as living area: Yes

Heated: Yes  
Finished: Yes  
Enclosed: Yes  
Contiguous: Yes  
Permitted: Yes  
Wet space: No  
Addition: No  
Conversion: No

**5 Floor 1 - WC**

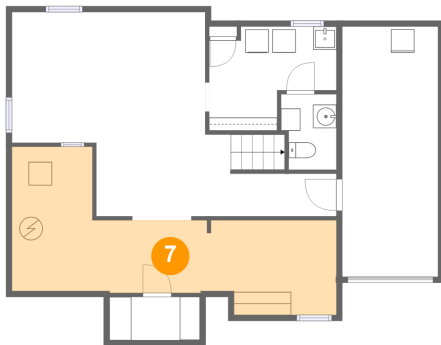
Dimensions: 4'9" x 6'6"  
Area: 29 sq. ft  
Counted as living area: Yes

Heated: Yes  
Finished: Yes  
Enclosed: Yes  
Contiguous: Yes  
Permitted: Yes  
Wet space: Yes  
Addition: No  
Conversion: No

**729 Irwin Dr, Pittsburgh, PA, US****6 Floor 1 - Recreation Room**

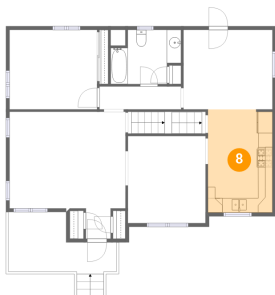
Dimensions: 16'7" x 17'6"  
Area: 245 sq. ft  
Counted as living area: Yes

Heated: Yes  
Finished: Yes  
Enclosed: Yes  
Contiguous: Yes  
Permitted: Yes  
Wet space: No  
Addition: No  
Conversion: No

**7 Floor 1 - Basement**

Dimensions: 27'10" x 12'4"  
Area: 231 sq. ft  
Counted as living area: No

Heated: Yes  
Finished: No  
Enclosed: Yes  
Contiguous: Yes  
Permitted: Yes  
Wet space: No  
Addition: No  
Conversion: No

**8 Floor 2 - Kitchen**

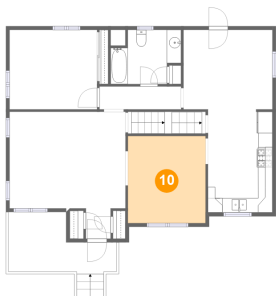
Dimensions: 9'0" x 14'4"  
Area: 128 sq. ft  
Counted as living area: Yes

Heated: Yes  
Finished: Yes  
Enclosed: Yes  
Contiguous: Yes  
Permitted: Yes  
Wet space: No  
Addition: No  
Conversion: No

**729 Irwin Dr, Pittsburgh, PA, US****9 Floor 2 - Living Room**

Dimensions: 16'1" x 13'5"  
Area: 216 sq. ft  
Counted as living area: Yes

Heated: Yes  
Finished: Yes  
Enclosed: Yes  
Contiguous: Yes  
Permitted: Yes  
Wet space: No  
Addition: No  
Conversion: No

**10 Floor 2 - Dining Room**

Dimensions: 10'10" x 12'1"  
Area: 131 sq. ft  
Counted as living area: Yes

Heated: Yes  
Finished: Yes  
Enclosed: Yes  
Contiguous: Yes  
Permitted: Yes  
Wet space: No  
Addition: No  
Conversion: No

**11 Floor 2 - Bath**

Dimensions: 9'10" x 7'6"  
Area: 62 sq. ft  
Counted as living area: Yes

Heated: Yes  
Finished: Yes  
Enclosed: Yes  
Contiguous: Yes  
Permitted: Yes  
Wet space: Yes  
Addition: No  
Conversion: No



12 Floor 2 - Foyer



Dimensions: 3'5" x 4'2"  
Area: 14 sq. ft  
Counted as living area: Yes

Heated: Yes  
Finished: Yes  
Enclosed: Yes  
Contiguous: Yes  
Permitted: Yes  
Wet space: No  
Addition: No  
Conversion: No

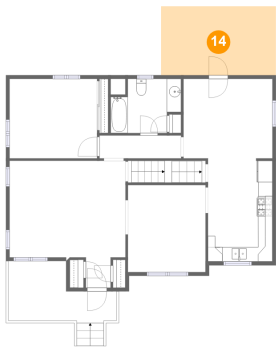
13 Floor 2 - Porch



Dimensions: 15'0" x 8'3"  
Area: 108 sq. ft  
Counted as living area: No

Heated: No  
Finished: Yes  
Enclosed: No  
Contiguous: Yes  
Permitted: Yes  
Wet space: No  
Addition: No  
Conversion: No

14 Floor 2 - Patio



Dimensions: 16'0" x 9'7"  
Area: 153 sq. ft  
Counted as living area: No

Heated: No  
Finished: Yes  
Enclosed: No  
Contiguous: Yes  
Permitted: Yes  
Wet space: No  
Addition: No  
Conversion: No

**15 Floor 2 - Hall**

Dimensions: 10'10" x 3'0"  
Area: 33 sq. ft  
Counted as living area: Yes

Heated: Yes  
Finished: Yes  
Enclosed: Yes  
Contiguous: Yes  
Permitted: Yes  
Wet space: No  
Addition: No  
Conversion: No

**16 Floor 2 - Family Room**

Dimensions: 12'4" x 11'0"  
Area: 136 sq. ft  
Counted as living area: Yes

Heated: Yes  
Finished: Yes  
Enclosed: Yes  
Contiguous: Yes  
Permitted: Yes  
Wet space: No  
Addition: No  
Conversion: No

**17 Floor 2 - Bedroom**

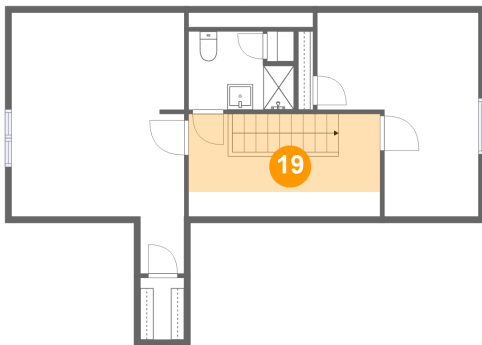
Dimensions: 12'2" x 11'0"  
Area: 134 sq. ft  
Counted as living area: Yes

Heated: Yes  
Finished: Yes  
Enclosed: Yes  
Contiguous: Yes  
Permitted: Yes  
Wet space: No  
Addition: No  
Conversion: No

**729 Irwin Dr,Pittsburgh,PA,US****18 Floor 2 - Hall**

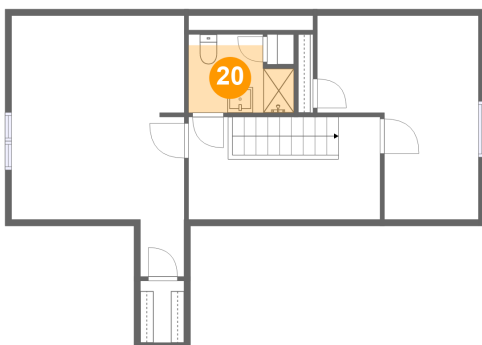
Dimensions: 11'4" x 3'2"  
Area: 36 sq. ft  
Counted as living area: Yes

Heated: Yes  
Finished: Yes  
Enclosed: Yes  
Contiguous: Yes  
Permitted: Yes  
Wet space: No  
Addition: No  
Conversion: No

**19 Floor 3 - Hall**

Dimensions: 15'0" x 8'0"  
Area: 91 sq. ft  
Counted as living area: Yes

Heated: Yes  
Finished: Yes  
Enclosed: Yes  
Contiguous: Yes  
Permitted: Yes  
Wet space: No  
Addition: No  
Conversion: No

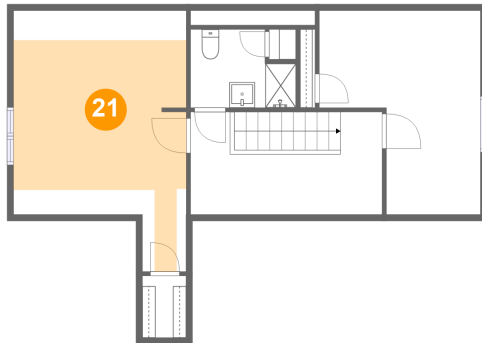
**20 Floor 3 - Bath**

Dimensions: 8'3" x 6'1"  
Area: 39 sq. ft  
Counted as living area: Yes

Heated: Yes  
Finished: Yes  
Enclosed: Yes  
Contiguous: Yes  
Permitted: Yes  
Wet space: Yes  
Addition: No  
Conversion: No

729 Irwin Dr,Pittsburgh,PA,US

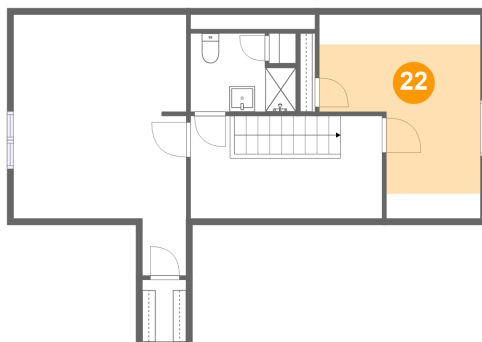
## 21 Floor 3 - Primary Bedroom



Dimensions: 13'6" x 20'5"  
Area: 169 sq. ft  
Counted as living area: Yes

Heated: Yes  
Finished: Yes  
Enclosed: Yes  
Contiguous: Yes  
Permitted: Yes  
Wet space: No  
Addition: No  
Conversion: No

## 22 Floor 3 - Bedroom



Dimensions: 12'7" x 15'11"  
Area: 113 sq. ft  
Counted as living area: Yes

Heated: Yes  
Finished: Yes  
Enclosed: Yes  
Contiguous: Yes  
Permitted: Yes  
Wet space: No  
Addition: No  
Conversion: No