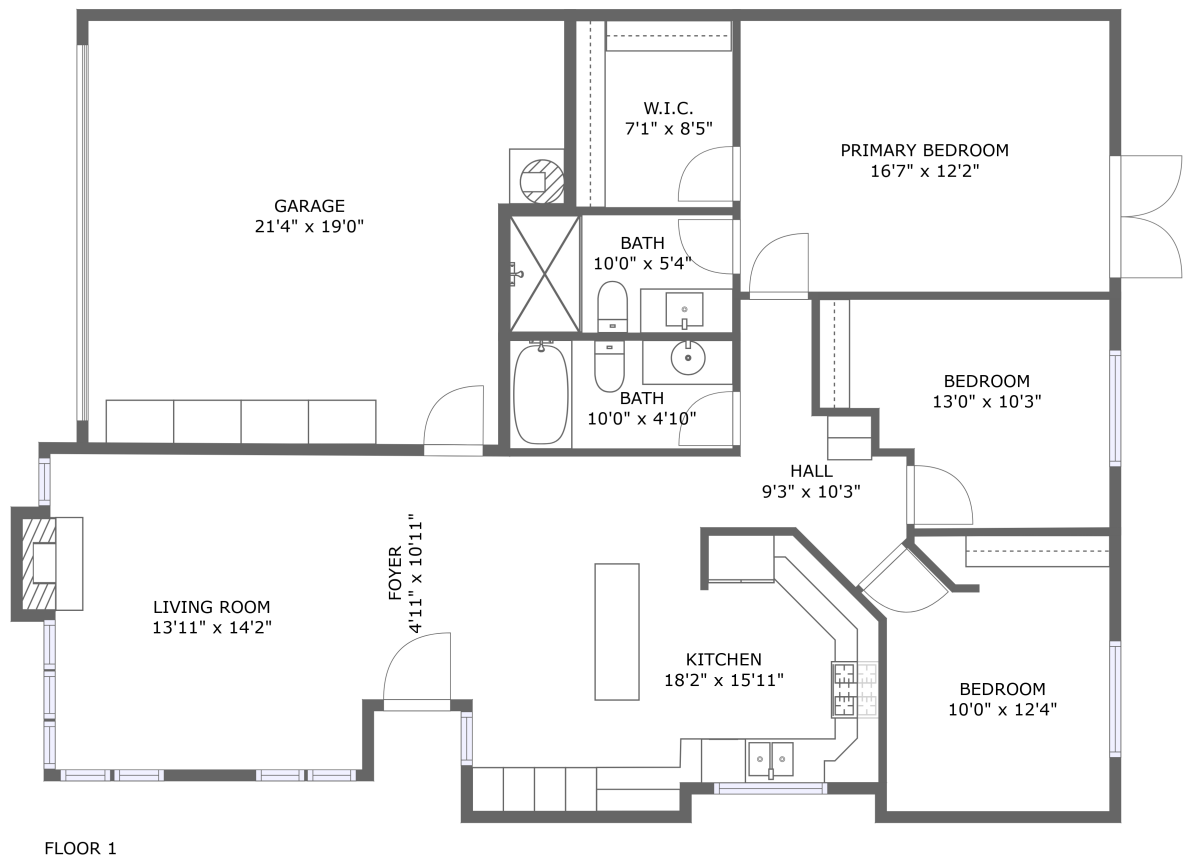
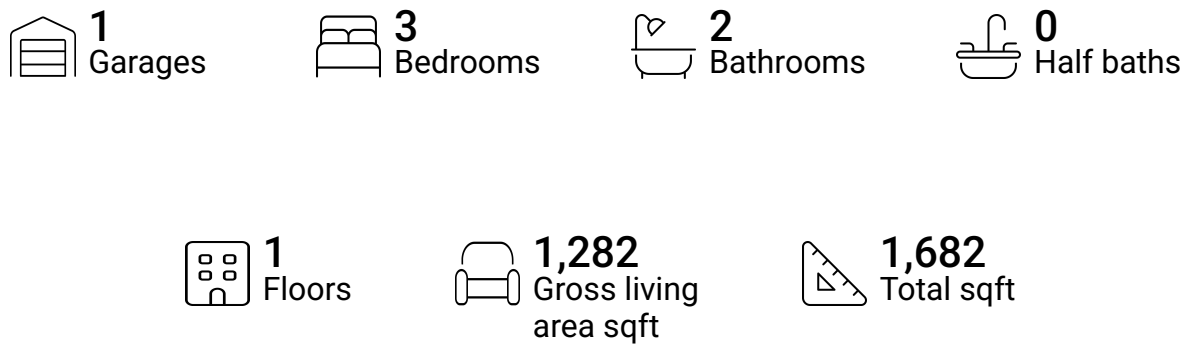


Home report

1283 Royal Crest Drive, Notting Hill, San Jose, Santa Clara
County, California, United States, 95131

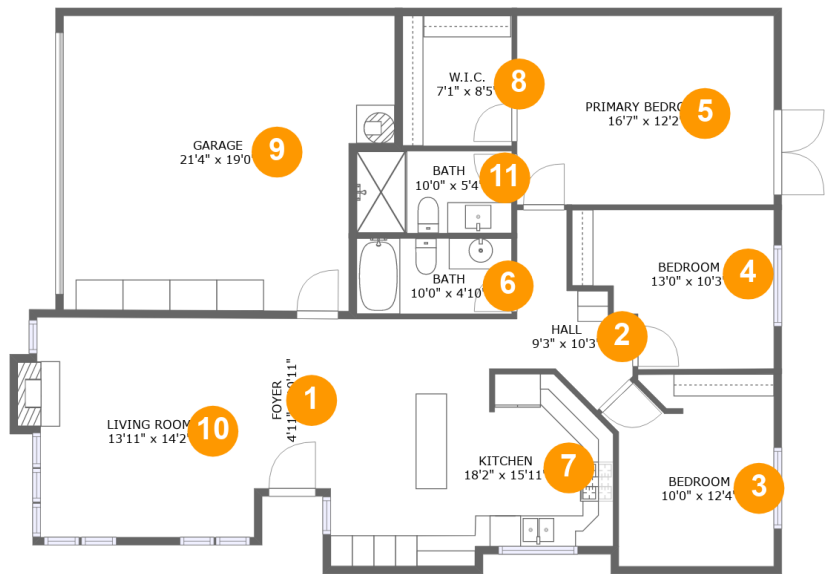


Property summary



Home report

1283 Royal Crest Drive, Notting Hill, San Jose, Santa Clara
County, California, United States, 95131

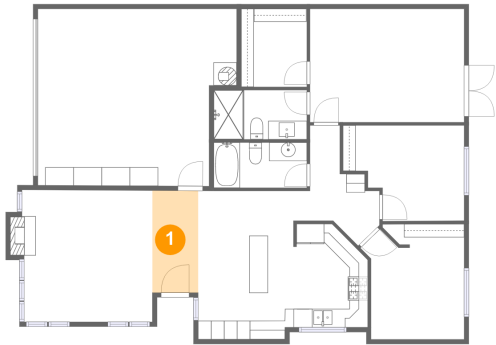


Room dimensions

Floor 1 Total sqft: 1682 Living area: 1282

#		Dimensions	sqft	Counted as living area
1	Foyer	4'11" x 10'11"	54 sq. ft	Yes
2	Hall	9'3" x 10'3"	64 sq. ft	Yes
3	Bedroom	10'0" x 12'4"	123 sq. ft	Yes
4	Bedroom	13'0" x 10'3"	114 sq. ft	Yes
5	Primary Bedroom	16'7" x 12'2"	202 sq. ft	Yes
6	Bath	10'0" x 4'10"	49 sq. ft	Yes
7	Kitchen	18'2" x 15'11"	243 sq. ft	Yes
8	W.I.C.	7'1" x 8'5"	59 sq. ft	Yes
9	Garage	21'4" x 19'0"	373 sq. ft	No
10	Living Room	13'11" x 14'2"	202 sq. ft	Yes
11	Bath	10'0" x 5'4"	53 sq. ft	Yes

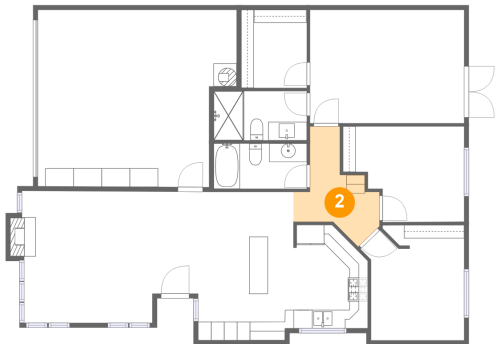
1 Floor 1 - Foyer



Dimensions: 4'11" x 10'11"
Area: 54 sq. ft
Counted as living area: Yes

Heated: Yes
Finished: Yes
Enclosed: Yes
Contiguous: Yes
Permitted: Yes
Wet space: No
Addition: No
Conversion: No

2 Floor 1 - Hall



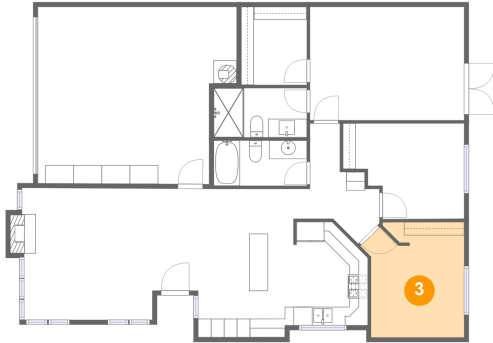
Dimensions: 9'3" x 10'3"
Area: 64 sq. ft
Counted as living area: Yes

Heated: Yes
Finished: Yes
Enclosed: Yes
Contiguous: Yes
Permitted: Yes
Wet space: No
Addition: No
Conversion: No

Home report

1283 Royal Crest Drive, Notting Hill, San Jose, Santa Clara
County, California, United States, 95131

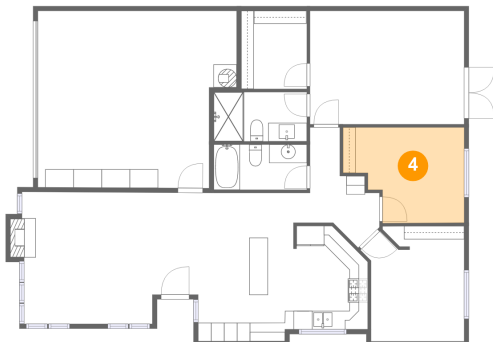
3 Floor 1 - Bedroom



Dimensions: 10'0" x 12'4"
Area: 123 sq. ft
Counted as living area: Yes

Heated: Yes
Finished: Yes
Enclosed: Yes
Contiguous: Yes
Permitted: Yes
Wet space: No
Addition: No
Conversion: No

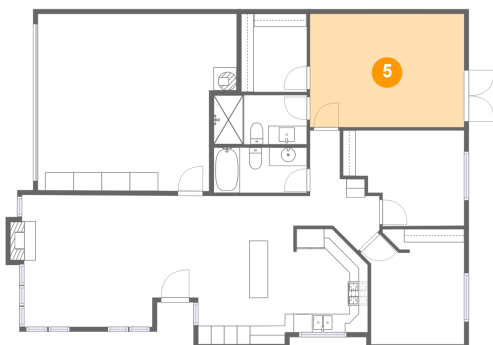
4 Floor 1 - Bedroom



Dimensions: 13'0" x 10'3"
Area: 114 sq. ft
Counted as living area: Yes

Heated: Yes
Finished: Yes
Enclosed: Yes
Contiguous: Yes
Permitted: Yes
Wet space: No
Addition: No
Conversion: No

5 Floor 1 - Primary Bedroom



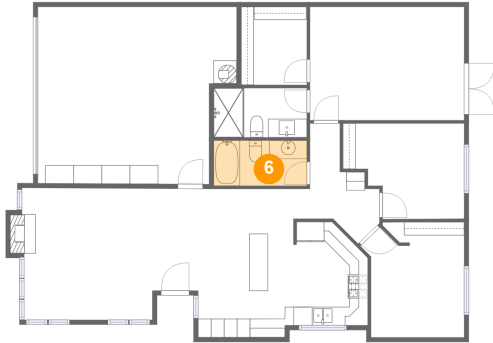
Dimensions: 16'7" x 12'2"
Area: 202 sq. ft
Counted as living area: Yes

Heated: Yes
Finished: Yes
Enclosed: Yes
Contiguous: Yes
Permitted: Yes
Wet space: No
Addition: No
Conversion: No

Home report

1283 Royal Crest Drive, Notting Hill, San Jose, Santa Clara
County, California, United States, 95131

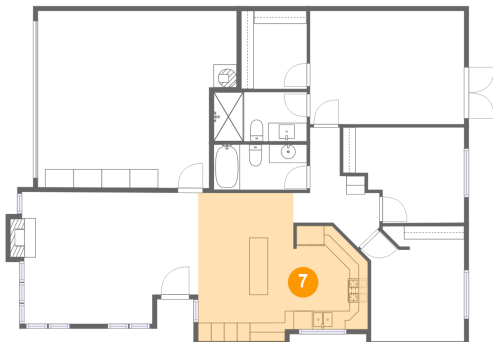
6 Floor 1 - Bath



Dimensions: 10'0" x 4'10"
Area: 49 sq. ft
Counted as living area: Yes

Heated: Yes
Finished: Yes
Enclosed: Yes
Contiguous: Yes
Permitted: Yes
Wet space: Yes
Addition: No
Conversion: No

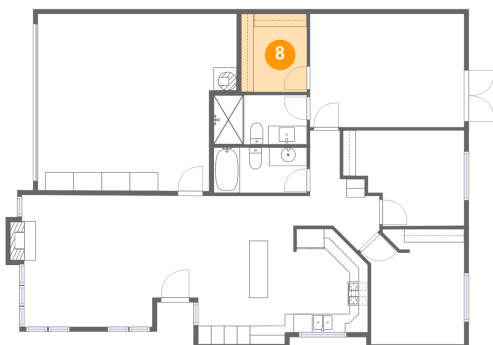
7 Floor 1 - Kitchen



Dimensions: 18'2" x 15'11"
Area: 243 sq. ft
Counted as living area: Yes

Heated: Yes
Finished: Yes
Enclosed: Yes
Contiguous: Yes
Permitted: Yes
Wet space: No
Addition: No
Conversion: No

8 Floor 1 - W.I.C.



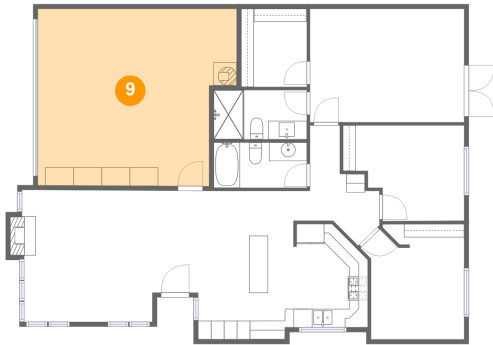
Dimensions: 7'1" x 8'5"
Area: 59 sq. ft
Counted as living area: Yes

Heated: Yes
Finished: Yes
Enclosed: Yes
Contiguous: Yes
Permitted: Yes
Wet space: No
Addition: No
Conversion: No

Home report

1283 Royal Crest Drive, Notting Hill, San Jose, Santa Clara
County, California, United States, 95131

9 Floor 1 - Garage



Dimensions: 21'4" x 19'0"
Area: 373 sq. ft
Counted as living area: No

Heated: No
Finished: No
Enclosed: Yes
Contiguous: Yes
Permitted: Yes
Wet space: No
Addition: No
Conversion: No

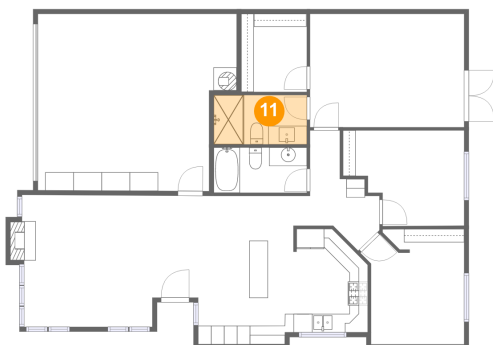
10 Floor 1 - Living Room



Dimensions: 13'11" x 14'2"
Area: 202 sq. ft
Counted as living area: Yes

Heated: Yes
Finished: Yes
Enclosed: Yes
Contiguous: Yes
Permitted: Yes
Wet space: No
Addition: No
Conversion: No

11 Floor 1 - Bath



Dimensions: 10'0" x 5'4"
Area: 53 sq. ft
Counted as living area: Yes

Heated: Yes
Finished: Yes
Enclosed: Yes
Contiguous: Yes
Permitted: Yes
Wet space: Yes
Addition: No
Conversion: No