

Home report

409 North Washington Street, Titusville, Crawford County,
Pennsylvania, United States, 16354



Total Area: 2807 sq. ft

Below Ground: 202 sq. ft, Floor 2: 1217 sq. ft, Floor 3: 983 sq. ft, Floor 4: 405 sq. ft
Excluded: Basement 311 sq. ft, Utility 177 sq. ft, Hall 90 sq. ft, Shed 95 sq. ft, Porch 60 sq. ft, Covered patio 462 sq. ft, Patio 257 sq. ft, Balcony 149 sq. ft, Fireplace 7 sq. ft, Low ceiling 539 sq. ft, Walls: 305 sq. ft

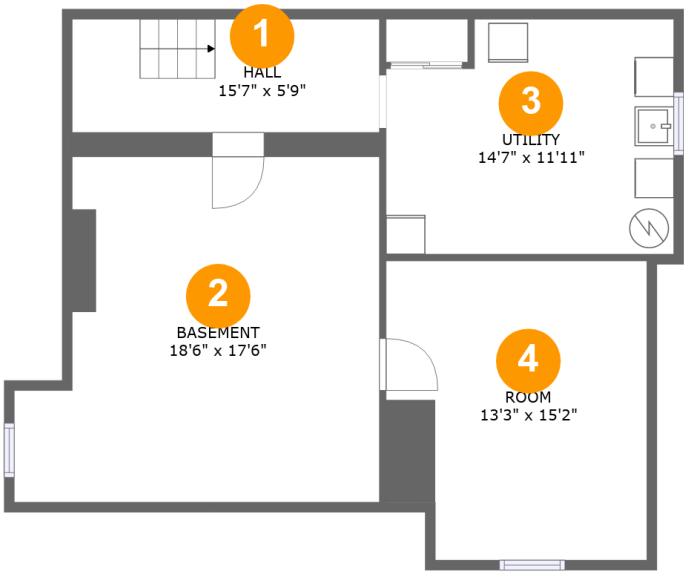
Property summary

**4**
Floors

**3**
Bedrooms

**2**
Bathrooms

409 North Washington Street, Titusville, Crawford County,
Pennsylvania, United States, 16354



Room dimensions

Floor 1 Below ground Total:202sqft Excluded: 578sqft

#		Max Dimensions	sqft	Included
1	Hall	15'7" x 5'9"	90 sq. ft	No
2	Basement	18'6" x 17'6"	290 sq. ft	No
3	Utility	14'7" x 11'11"	163 sq. ft	No
4	Room	13'3" x 15'2"	193 sq. ft	Yes

Home report

409 North Washington Street, Titusville, Crawford County,
Pennsylvania, United States, 16354



Room dimensions

Floor 2 Total:1217sqft Excluded: 874sqft

#		Max Dimensions	sqft	Included
5	Breakfast Nook	8'9" x 8'7"	73 sq. ft	Yes
6	Bath	5'7" x 8'3"	46 sq. ft	Yes
7	Hall	3'6" x 8'8"	31 sq. ft	Yes
8	Kitchen	11'10" x 11'11"	141 sq. ft	Yes
9	Shed	10'8" x 8'11"	95 sq. ft	No
10	Entry	8'1" x 8'3"	67 sq. ft	Yes
11	Covered Patio	24'1" x 15'10"	364 sq. ft	No
12	Living Room	20'10" x 21'2"	417 sq. ft	Yes
13	Patio	14'10" x 23'7"	257 sq. ft	No
14	Sunroom	8'8" x 15'7"	129 sq. ft	Yes
15	Covered Patio	10'5" x 9'4"	98 sq. ft	No

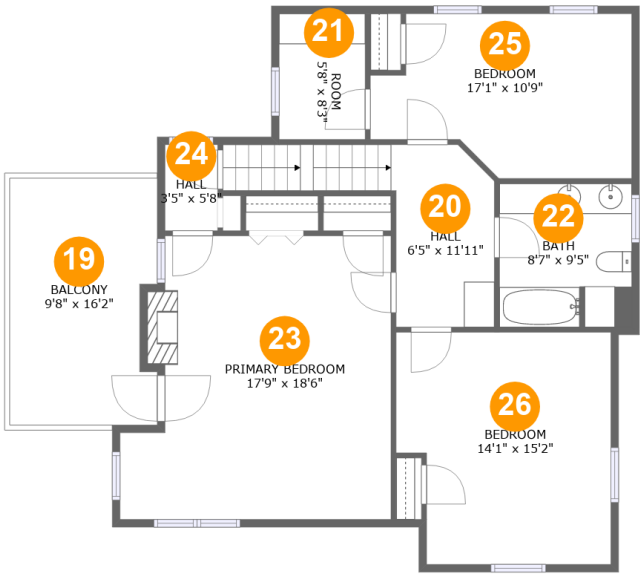
Home report

409 North Washington Street, Titusville, Crawford County,
Pennsylvania, United States, 16354

#		Max Dimensions	sqft	Included
16	Dining Room	10'11" x 15'2"	166 sq. ft	Yes
17	Porch	9'1" x 6'8"	60 sq. ft	No
18	Foyer	8'9" x 9'4"	82 sq. ft	Yes

Home report

409 North Washington Street, Titusville, Crawford County,
Pennsylvania, United States, 16354



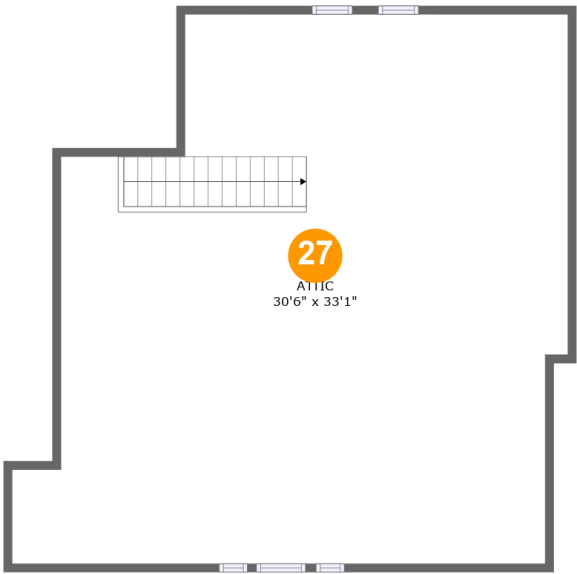
Room dimensions

Floor 3 Total:983sqft Excluded: 156sqft

#		Max Dimensions	sqft	Included
19	Balcony	9'8" x 16'2"	149 sq. ft	No
20	Hall	6'5" x 11'11"	108 sq. ft	Yes
21	Room	5'8" x 8'3"	46 sq. ft	Yes
22	Bath	8'7" x 9'5"	80 sq. ft	Yes
23	Primary Bedroom	17'9" x 18'6"	296 sq. ft	Yes
24	Hall	3'5" x 5'8"	19 sq. ft	Yes
25	Bedroom	17'1" x 10'9"	157 sq. ft	Yes
26	Bedroom	14'1" x 15'2"	199 sq. ft	Yes

Home report

409 North Washington Street, Titusville, Crawford County,
Pennsylvania, United States, 16354



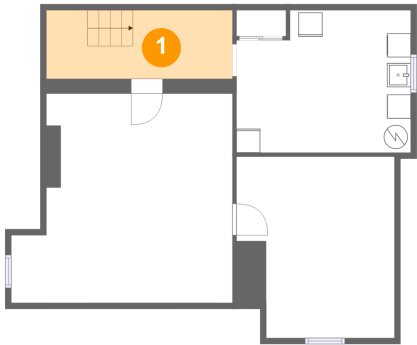
Room dimensions

Floor 4 Total:405sqft Excluded: 539sqft

#		Max Dimensions	sqft	Included
27	Attic	30'6" x 33'1"	405 sq. ft	Yes

409 North Washington Street, Titusville, Crawford County,
Pennsylvania, United States, 16354

1 Floor 1 - Hall



Max Dimensions: 15'7" x 5'9"
Calculated Area: 90 sq. ft
Included: No

Heated: Yes
Finished: No
Enclosed: Yes
Contiguous: Yes
Permitted: Yes
Wet space: No
Addition: No
Conversion: No

2 Floor 1 - Basement



Max Dimensions: 18'6" x 17'6"
Calculated Area: 290 sq. ft
Included: No

Heated: Yes
Finished: No
Enclosed: Yes
Contiguous: Yes
Permitted: Yes
Wet space: No
Addition: No
Conversion: No

409 North Washington Street, Titusville, Crawford County,
Pennsylvania, United States, 16354

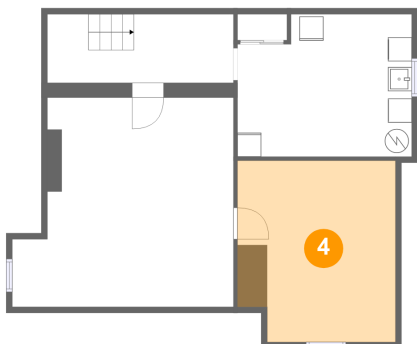
3 Floor 1 - Utility



Max Dimensions: 14'7" x 11'11"
Calculated Area: 163 sq. ft
Included: No

Heated: Yes
Finished: No
Enclosed: Yes
Contiguous: Yes
Permitted: Yes
Wet space: No
Addition: No
Conversion: No

4 Floor 1 - Room



Max Dimensions: 13'3" x 15'2"
Calculated Area: 193 sq. ft
Included: No

Heated: Yes
Finished: Yes
Enclosed: Yes
Contiguous: No
Permitted: Yes
Wet space: No
Addition: No
Conversion: No

5 Floor 2 - Breakfast Nook



Max Dimensions: 8'9" x 8'7"
Calculated Area: 73 sq. ft
Included: Yes

Heated: Yes
Finished: Yes
Enclosed: Yes
Contiguous: Yes
Permitted: Yes
Wet space: No
Addition: No
Conversion: No

409 North Washington Street, Titusville, Crawford County,
Pennsylvania, United States, 16354

6 Floor 2 - Bath



Max Dimensions: 5'7" x 8'3"
Calculated Area: 46 sq. ft
Included: Yes

Heated: Yes
Finished: Yes
Enclosed: Yes
Contiguous: Yes
Permitted: Yes
Wet space: Yes
Addition: No
Conversion: No

7 Floor 2 - Hall



Max Dimensions: 3'6" x 8'8"
Calculated Area: 31 sq. ft
Included: Yes

Heated: Yes
Finished: Yes
Enclosed: Yes
Contiguous: Yes
Permitted: Yes
Wet space: No
Addition: No
Conversion: No

8 Floor 2 - Kitchen



Max Dimensions: 11'10" x 11'11"
Calculated Area: 141 sq. ft
Included: Yes

Heated: Yes
Finished: Yes
Enclosed: Yes
Contiguous: Yes
Permitted: Yes
Wet space: No
Addition: No
Conversion: No

409 North Washington Street, Titusville, Crawford County,
Pennsylvania, United States, 16354

9 Floor 2 - Shed



Max Dimensions: 10'8" x 8'11"
Calculated Area: 95 sq. ft
Included: No

Heated: No
Finished: No
Enclosed: No
Contiguous: Yes
Permitted: Yes
Wet space: No
Addition: No
Conversion: No

10 Floor 2 - Entry



Max Dimensions: 8'1" x 8'3"
Calculated Area: 67 sq. ft
Included: Yes

Heated: Yes
Finished: Yes
Enclosed: Yes
Contiguous: Yes
Permitted: Yes
Wet space: No
Addition: No
Conversion: No

11 Floor 2 - Covered Patio



Max Dimensions: 24'1" x 15'10"
Calculated Area: 364 sq. ft
Included: No

Heated: No
Finished: Yes
Enclosed: No
Contiguous: Yes
Permitted: Yes
Wet space: No
Addition: No
Conversion: No

409 North Washington Street, Titusville, Crawford County,
Pennsylvania, United States, 16354

12 Floor 2 - Living Room



Max Dimensions: 20'10" x 21'2"
Calculated Area: 417 sq. ft
Included: Yes

Heated: Yes
Finished: Yes
Enclosed: Yes
Contiguous: Yes
Permitted: Yes
Wet space: No
Addition: No
Conversion: No

13 Floor 2 - Patio



Max Dimensions: 14'10" x 23'7"
Calculated Area: 257 sq. ft
Included: No

Heated: No
Finished: Yes
Enclosed: No
Contiguous: Yes
Permitted: Yes
Wet space: No
Addition: No
Conversion: No

14 Floor 2 - Sunroom



Max Dimensions: 8'8" x 15'7"
Calculated Area: 129 sq. ft
Included: Yes

Heated: Yes
Finished: Yes
Enclosed: Yes
Contiguous: Yes
Permitted: Yes
Wet space: No
Addition: No
Conversion: No

409 North Washington Street, Titusville, Crawford County,
Pennsylvania, United States, 16354

15 Floor 2 - Covered Patio



Max Dimensions: 10'5" x 9'4"
Calculated Area: 98 sq. ft
Included: No

Heated: No
Finished: Yes
Enclosed: No
Contiguous: Yes
Permitted: Yes
Wet space: No
Addition: No
Conversion: No

16 Floor 2 - Dining Room



Max Dimensions: 10'11" x 15'2"
Calculated Area: 166 sq. ft
Included: Yes

Heated: Yes
Finished: Yes
Enclosed: Yes
Contiguous: Yes
Permitted: Yes
Wet space: No
Addition: No
Conversion: No

17 Floor 2 - Porch



Max Dimensions: 9'1" x 6'8"
Calculated Area: 60 sq. ft
Included: No

Heated: No
Finished: Yes
Enclosed: No
Contiguous: Yes
Permitted: Yes
Wet space: No
Addition: No
Conversion: No

409 North Washington Street, Titusville, Crawford County,
Pennsylvania, United States, 16354

18 Floor 2 - Foyer



Max Dimensions: 8'9" x 9'4"
Calculated Area: 82 sq. ft
Included: Yes

Heated: Yes
Finished: Yes
Enclosed: Yes
Contiguous: Yes
Permitted: Yes
Wet space: No
Addition: No
Conversion: No

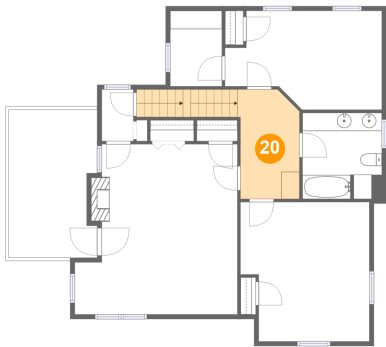
19 Floor 3 - Balcony



Max Dimensions: 9'8" x 16'2"
Calculated Area: 149 sq. ft
Included: No

Heated: No
Finished: Yes
Enclosed: No
Contiguous: Yes
Permitted: Yes
Wet space: No
Addition: No
Conversion: No

20 Floor 3 - Hall

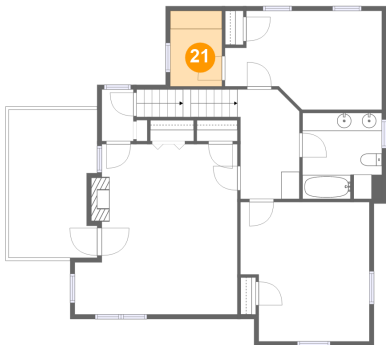


Max Dimensions: 6'5" x 11'11"
Calculated Area: 108 sq. ft
Included: Yes

Heated: Yes
Finished: Yes
Enclosed: Yes
Contiguous: Yes
Permitted: Yes
Wet space: No
Addition: No
Conversion: No

409 North Washington Street, Titusville, Crawford County,
Pennsylvania, United States, 16354

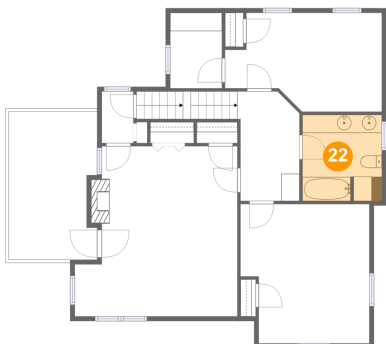
21 Floor 3 - Room



Max Dimensions: 5'8" x 8'3"
Calculated Area: 46 sq. ft
Included: Yes

Heated: Yes
Finished: Yes
Enclosed: Yes
Contiguous: Yes
Permitted: Yes
Wet space: No
Addition: No
Conversion: No

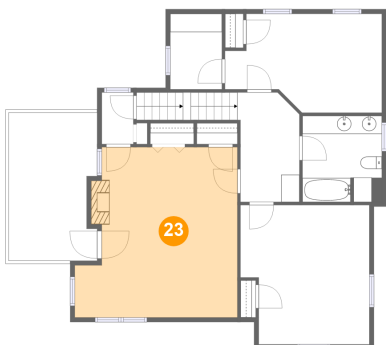
22 Floor 3 - Bath



Max Dimensions: 8'7" x 9'5"
Calculated Area: 80 sq. ft
Included: Yes

Heated: Yes
Finished: Yes
Enclosed: Yes
Contiguous: Yes
Permitted: Yes
Wet space: Yes
Addition: No
Conversion: No

23 Floor 3 - Primary Bedroom



Max Dimensions: 17'9" x 18'6"
Calculated Area: 296 sq. ft
Included: Yes

Heated: Yes
Finished: Yes
Enclosed: Yes
Contiguous: Yes
Permitted: Yes
Wet space: No
Addition: No
Conversion: No

409 North Washington Street, Titusville, Crawford County,
Pennsylvania, United States, 16354

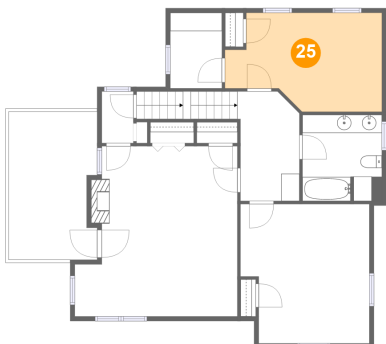
24 Floor 3 - Hall



Max Dimensions: 3'5" x 5'8"
Calculated Area: 19 sq. ft
Included: Yes

Heated: Yes
Finished: Yes
Enclosed: Yes
Contiguous: Yes
Permitted: Yes
Wet space: No
Addition: No
Conversion: No

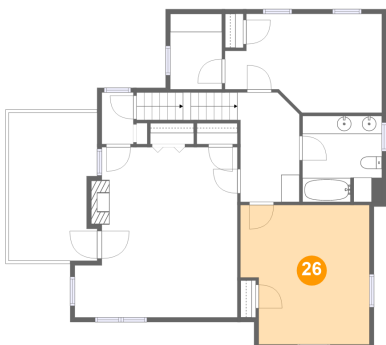
25 Floor 3 - Bedroom



Max Dimensions: 17'1" x 10'9"
Calculated Area: 157 sq. ft
Included: Yes

Heated: Yes
Finished: Yes
Enclosed: Yes
Contiguous: Yes
Permitted: Yes
Wet space: No
Addition: No
Conversion: No

26 Floor 3 - Bedroom

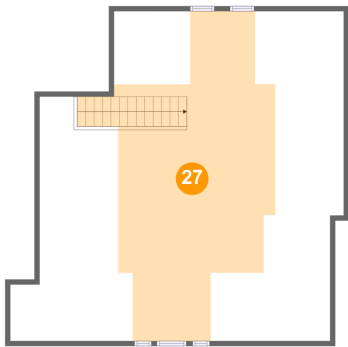


Max Dimensions: 14'1" x 15'2"
Calculated Area: 199 sq. ft
Included: Yes

Heated: Yes
Finished: Yes
Enclosed: Yes
Contiguous: Yes
Permitted: Yes
Wet space: No
Addition: No
Conversion: No

409 North Washington Street, Titusville, Crawford County,
Pennsylvania, United States, 16354

27 Floor 4 - Attic



Max Dimensions: 30'6" x 33'1"
Calculated Area: 405 sq. ft
Included: No

Heated: No
Finished: Yes
Enclosed: Yes
Contiguous: Yes
Permitted: Yes
Wet space: No
Addition: No
Conversion: No