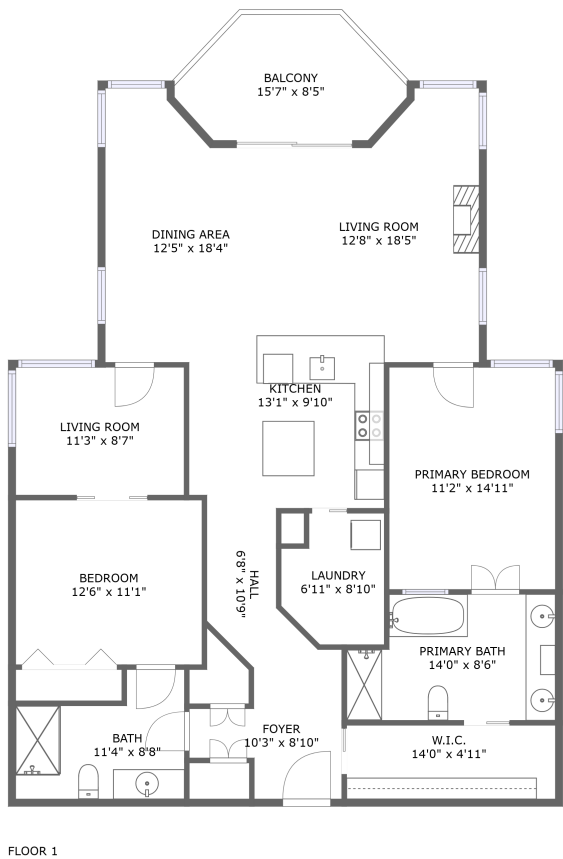



Home report


15 St Andrew Street, Brockville, United Counties of Leeds and
Grenville, Ontario, Canada, K6V 0B8, 1501



Property summary


 **0** Garages


 **2** Bedrooms

 **2** Bathrooms

 **0** Half baths

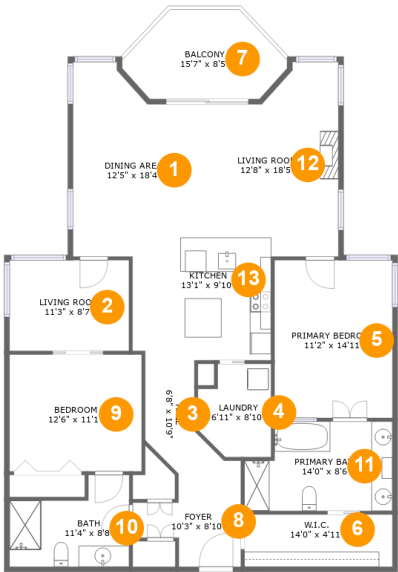
 **1** Floors

 **1,465** Gross living area sqft

 **1,568** Total sqft

Home report

15 St Andrew Street, Brockville, United Counties of Leeds and
Grenville, Ontario, Canada, K6V 0B8, 1501



Room dimensions

Floor 1 Total sqft: 1568 Living area: 1465

#		Dimensions	sqft	Counted as living area
1	Dining Area	12'5" x 18'4"	200 sq. ft	Yes
2	Living Room	11'3" x 8'7"	97 sq. ft	Yes
3	Hall	6'8" x 10'9"	54 sq. ft	Yes
4	Laundry	6'11" x 8'10"	53 sq. ft	Yes
5	Primary Bedroom	11'2" x 14'11"	166 sq. ft	Yes
6	W.I.C.	14'0" x 4'11"	69 sq. ft	Yes
7	Balcony	15'7" x 8'5"	103 sq. ft	No
8	Foyer	10'3" x 8'10"	66 sq. ft	Yes
9	Bedroom	12'6" x 11'1"	138 sq. ft	Yes
10	Bath	11'4" x 8'8"	80 sq. ft	Yes
11	Primary Bath	14'0" x 8'6"	108 sq. ft	Yes

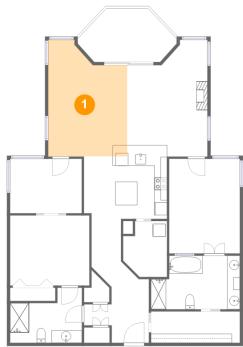
Home report

15 St Andrew Street, Brockville, United Counties of Leeds and
Grenville, Ontario, Canada, K6V 0B8, 1501

#		Dimensions	sqft	Counted as living area
12	Living Room	12'8" x 18'5"	204 sq. ft	Yes
13	Kitchen	13'1" x 9'10"	128 sq. ft	Yes

15 St Andrew Street, Brockville, United Counties of Leeds and
Grenville, Ontario, Canada, K6V 0B8, 1501

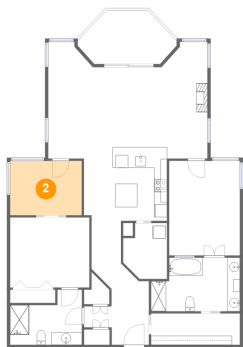
1 Floor 1 - Dining Area



Dimensions: 12'5" x 18'4"
Area: 200 sq. ft
Counted as living area: Yes

Heated: Yes
Finished: Yes
Enclosed: Yes
Contiguous: Yes
Permitted: Yes
Wet space: No
Addition: No
Conversion: No

2 Floor 1 - Living Room

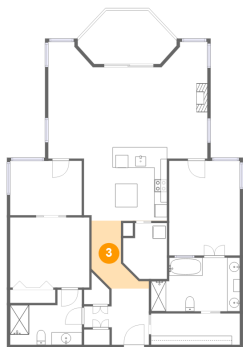


Dimensions: 11'3" x 8'7"
Area: 97 sq. ft
Counted as living area: Yes

Heated: Yes
Finished: Yes
Enclosed: Yes
Contiguous: Yes
Permitted: Yes
Wet space: No
Addition: No
Conversion: No

15 St Andrew Street, Brockville, United Counties of Leeds and
Grenville, Ontario, Canada, K6V 0B8, 1501

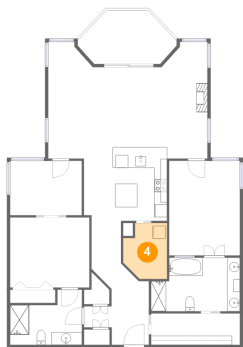
3 Floor 1 - Hall



Dimensions: 6'8" x 10'9"
Area: 54 sq. ft
Counted as living area: Yes

Heated: Yes
Finished: Yes
Enclosed: Yes
Contiguous: Yes
Permitted: Yes
Wet space: No
Addition: No
Conversion: No

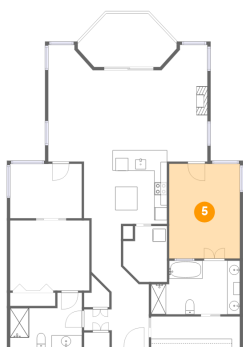
4 Floor 1 - Laundry



Dimensions: 6'11" x 8'10"
Area: 53 sq. ft
Counted as living area: Yes

Heated: Yes
Finished: Yes
Enclosed: Yes
Contiguous: Yes
Permitted: Yes
Wet space: No
Addition: No
Conversion: No

5 Floor 1 - Primary Bedroom

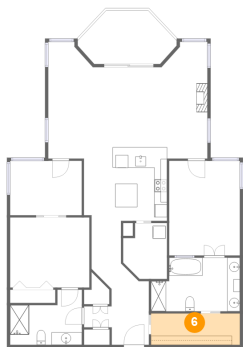


Dimensions: 11'2" x 14'11"
Area: 166 sq. ft
Counted as living area: Yes

Heated: Yes
Finished: Yes
Enclosed: Yes
Contiguous: Yes
Permitted: Yes
Wet space: No
Addition: No
Conversion: No

15 St Andrew Street, Brockville, United Counties of Leeds and
Grenville, Ontario, Canada, K6V 0B8, 1501

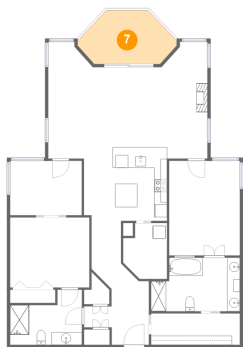
6 Floor 1 - W.I.C.



Dimensions: 14'0" x 4'11"
Area: 69 sq. ft
Counted as living area: Yes

Heated: Yes
Finished: Yes
Enclosed: Yes
Contiguous: Yes
Permitted: Yes
Wet space: No
Addition: No
Conversion: No

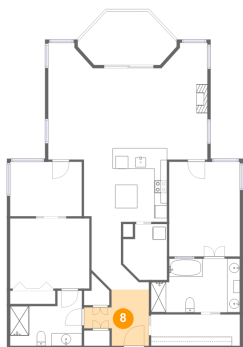
7 Floor 1 - Balcony



Dimensions: 15'7" x 8'5"
Area: 103 sq. ft
Counted as living area: No

Heated: No
Finished: Yes
Enclosed: No
Contiguous: Yes
Permitted: Yes
Wet space: No
Addition: No
Conversion: No

8 Floor 1 - Foyer

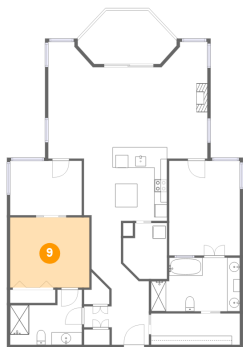


Dimensions: 10'3" x 8'10"
Area: 66 sq. ft
Counted as living area: Yes

Heated: Yes
Finished: Yes
Enclosed: Yes
Contiguous: Yes
Permitted: Yes
Wet space: No
Addition: No
Conversion: No

15 St Andrew Street, Brockville, United Counties of Leeds and
Grenville, Ontario, Canada, K6V 0B8, 1501

9 Floor 1 - Bedroom



Dimensions: 12'6" x 11'1"
Area: 138 sq. ft
Counted as living area: Yes

Heated: Yes
Finished: Yes
Enclosed: Yes
Contiguous: Yes
Permitted: Yes
Wet space: No
Addition: No
Conversion: No

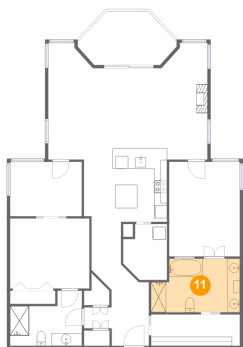
10 Floor 1 - Bath



Dimensions: 11'4" x 8'8"
Area: 80 sq. ft
Counted as living area: Yes

Heated: Yes
Finished: Yes
Enclosed: Yes
Contiguous: Yes
Permitted: Yes
Wet space: Yes
Addition: No
Conversion: No

11 Floor 1 - Primary Bath

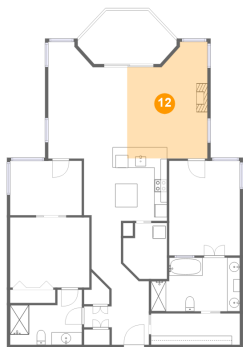


Dimensions: 14'0" x 8'6"
Area: 108 sq. ft
Counted as living area: Yes

Heated: Yes
Finished: Yes
Enclosed: Yes
Contiguous: Yes
Permitted: Yes
Wet space: Yes
Addition: No
Conversion: No

15 St Andrew Street, Brockville, United Counties of Leeds and
Grenville, Ontario, Canada, K6V 0B8, 1501

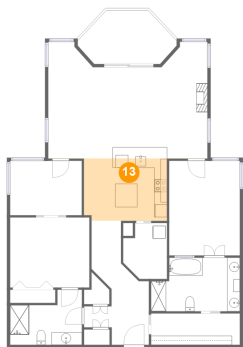
12 Floor 1 - Living Room



Dimensions: 12'8" x 18'5"
Area: 204 sq. ft
Counted as living area: Yes

Heated: Yes
Finished: Yes
Enclosed: Yes
Contiguous: Yes
Permitted: Yes
Wet space: No
Addition: No
Conversion: No

13 Floor 1 - Kitchen



Dimensions: 13'1" x 9'10"
Area: 128 sq. ft
Counted as living area: Yes

Heated: Yes
Finished: Yes
Enclosed: Yes
Contiguous: Yes
Permitted: Yes
Wet space: No
Addition: No
Conversion: No