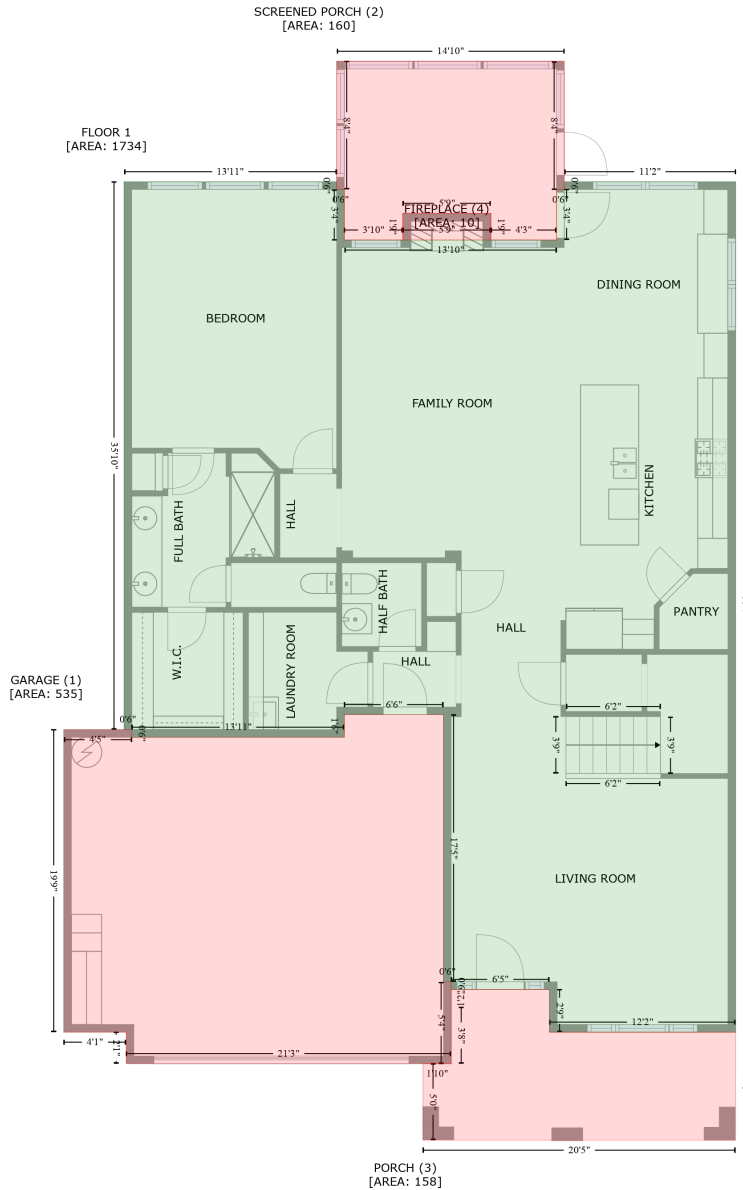


# 63 White Pine Drive, Clayton, Johnston County, North Carolina, United States, 27527

Gross Living Area: 2629 sq. ft



Space	Area (sq. ft)	Calculation
FLOOR 1 (Living area)	1734	Coordinate Polygon Area Algorithm using inches $-((98 + 98) * (142 - 148) + (98 + 104) * (148 - 148) + (104 + 104) * (148 - 187.7) + (104 + 270.3) * (187.7 - 187.7) + (270.3 + 270.3) * (187.7 - 148) + (270.3 + 276.3) * (148 - 148) + (276.3 + 276.3) * (148 - 142) + (276.3 + 410.7) * (142 - 142) + (410.7 + 410.7) * (142 - 808.8) + (410.7 + 264.8) * (808.8 - 808.8) + (264.8 + 264.8) * (808.8 - 775.3) + (264.8 + 187.7) * (775.3 - 775.3) + (187.7 + 187.7) * (775.3 - 769.3) + (187.7 + 181.7) * (769.3 - 769.3) + (181.7 + 181.7) * (769.3 - 559.8) + (181.7 + 104) * (559.8 - 559.8) + (104 + 104) * (559.8 - 577.6) + (104 + -62.7) * (577.6 - 577.6) + (-62.7 + -62.7) * (577.6 - 571.6) + (-62.7 + -68.7) * (571.6 - 571.6) + (-68.7 + -68.7) * (571.6 - 142)$

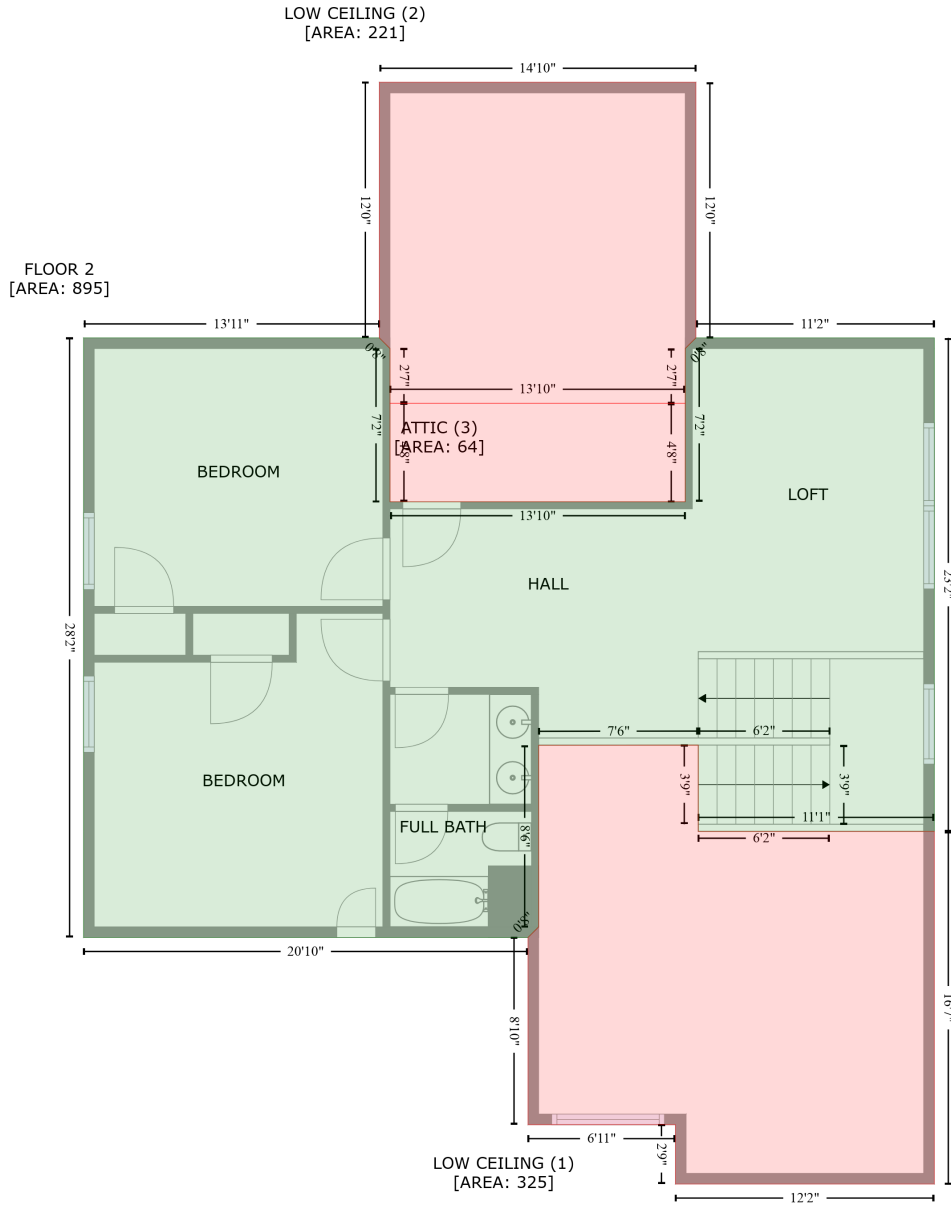
# 63 White Pine Drive, Clayton, Johnston County, North Carolina, United States, 27527

Gross Living Area: 2629 sq. ft

Space	Area (sq. ft)	Calculation <small>Coordinate Polygon Area Algorithm using inches</small>
GARAGE (Non-living area)	535	$+ (-68.7 + 98) * (142 - 142)) * 0.5 * 0.00694$ $-((181.7 + 181.7) * (559.8 - 769.3) + (181.7 + 187.7) * (769.3 - 769.3) + (187.7 + 187.7) * (769.3 - 833.5) + (187.7 + -66.9) * (833.5 - 833.5) + (-66.9 + -66.9) * (833.5 - 808.8) + (-66.9 + -115.9) * (808.8 - 808.8) + (-115.9 + -115.9) * (808.8 - 571.6) + (-115.9 + -62.7) * (571.6 - 571.6) + (-62.7 + -62.7) * (571.6 - 577.6) + (-62.7 + 104) * (577.6 - 577.6) + (104 + 104) * (577.6 - 559.8) + (104 + 181.7) * (559.8 - 559.8)) * 0.5 * 0.00694$
SCREENED PORCH (Non-living area)	160	$-((276.3 + 276.3) * (47.5 - 148) + (276.3 + 270.3) * (148 - 148) + (270.3 + 270.3) * (148 - 187.7) + (270.3 + 218.9) * (187.7 - 187.7) + (218.9 + 218.9) * (187.7 - 166.8) + (218.9 + 149.9) * (166.8 - 166.8) + (149.9 + 149.9) * (166.8 - 187.7) + (149.9 + 104) * (187.7 - 187.7) + (104 + 104) * (187.7 - 148) + (104 + 98) * (148 - 148) + (98 + 98) * (148 - 47.5) + (98 + 276.3) * (47.5 - 47.5)) * 0.5 * 0.00694$
PORCH (Non-living area)	158	$-((264.8 + 264.8) * (775.3 - 808.8) + (264.8 + 410.7) * (808.8 - 808.8) + (410.7 + 410.7) * (808.8 - 893.4) + (410.7 + 165.7) * (893.4 - 893.4) + (165.7 + 165.7) * (893.4 - 833.3) + (165.7 + 187.7) * (833.3 - 833.5) + (187.7 + 187.7) * (833.5 - 789.2) + (187.7 + 187.8) * (789.2 - 775.4) + (187.8 + 264.8) * (775.4 - 775.3)) * 0.5 * 0.00694$
FIREPLACE (Non-living area)	10	$-((218.9 + 218.9) * (166.8 - 187.7) + (218.9 + 149.9) * (187.7 - 187.7) + (149.9 + 149.9) * (187.7 - 166.8) + (149.9 + 218.9) * (166.8 - 166.8)) * 0.5 * 0.00694$

# 63 White Pine Drive, Clayton, Johnston County, North Carolina, United States, 27527

Gross Living Area: 2629 sq. ft



Space	Area (sq. ft)	Calculation
FLOOR 2 (Living area)	895	Coordinate Polygon Area Algorithm using inches $-((149.4 + 155.4) * (331.8 - 337.8) + (155.4 + 155.4) * (337.8 - 424.1) + (155.4 + 321.8) * (424.1 - 424.1) + (321.8 + 321.8) * (424.1 - 337.8) + (321.8 + 327.8) * (337.8 - 331.8) + (327.8 + 462.1) * (331.8 - 331.8) + (462.1 + 462.1) * (331.8 - 609.9) + (462.1 + 329.1) * (609.9 - 609.9) + (329.1 + 329.1) * (609.9 - 561.3) + (329.1 + 239.2) * (561.3 - 561.4) + (239.2 + 239.2) * (561.4 - 663.8) + (239.2 + 233.2) * (663.8 - 669.8) + (233.2 + -17.2) * (669.8 - 669.8) + (-17.2 + -17.2) * (669.8 - 331.8) + (-17.2 + 149.4) * (331.8 - 331.8)) * 0.5 * 0.00694$

# 63 White Pine Drive, Clayton, Johnston County, North Carolina, United States, 27527

Gross Living Area: 2629 sq. ft

Space	Area (sq. ft)	Calculation <small>Coordinate Polygon Area Algorithm using inches</small>
LOW CEILING (Non-living area)	325	$-\left((329.1 + 329.1) * (561.3 - 609.9) + (329.1 + 462.1) * (609.9 - 609.9) + (462.1 + 462.1) * (609.9 - 808.8) + (462.1 + 316.2) * (808.8 - 808.8) + (316.2 + 316.2) * (808.8 - 775.3) + (316.2 + 233.2) * (775.3 - 775.3) + (233.2 + 233.2) * (775.3 - 669.8) + (233.2 + 239.2) * (669.8 - 663.8) + (239.2 + 239.2) * (663.8 - 561.4) + (239.2 + 329.1) * (561.4 - 561.3)\right) * 0.5 * 0.00694$
LOW CEILING (Non-living area)	221	$-\left((327.8 + 327.8) * (187.7 - 331.8) + (327.8 + 321.8) * (331.8 - 337.8) + (321.8 + 321.8) * (337.8 - 368.6) + (321.8 + 155.4) * (368.6 - 368.6) + (155.4 + 155.4) * (368.6 - 337.8) + (155.4 + 149.4) * (337.8 - 331.8) + (149.4 + 149.4) * (331.8 - 187.7) + (149.4 + 327.8) * (187.7 - 187.7)\right) * 0.5 * 0.00694$
ATTIC (Non-living area)	64	$-\left((321.8 + 321.8) * (368.6 - 424.1) + (321.8 + 155.4) * (424.1 - 424.1) + (155.4 + 155.4) * (424.1 - 368.6) + (155.4 + 321.8) * (368.6 - 368.6)\right) * 0.5 * 0.00694$