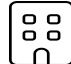




2956 Plaza Blanca, Santa Fe, NM, US



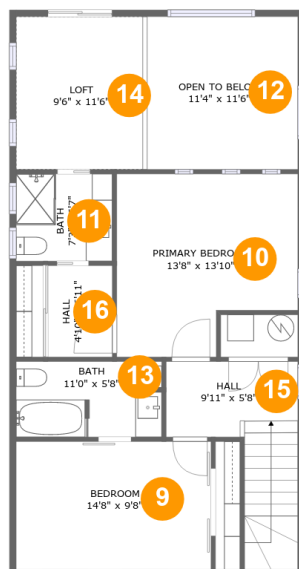
Property summary

 **0** Garages  **2** Bedrooms  **2** Bathrooms  **1** Half baths

 **2** Floors  **1,740** Gross living area sqft  **2,019** Total sqft

2956 Plaza Blanca, Santa Fe, NM, US**Room dimensions****Floor 1****Total sqft: 1069 Living area: 953**

#		Dimensions	sqft	Counted as living area
1	Dining Room	9'6" x 15'11"	145 sq. ft	Yes
2	Bath	3'2" x 8'1"	26 sq. ft	Yes
3	Outdoor	16'0" x 9'2"	115 sq. ft	No
4	Entry	9'9" x 7'5"	126 sq. ft	Yes
5	Hall	3'6" x 8'5"	30 sq. ft	Yes
6	Living Room	11'9" x 25'6"	297 sq. ft	Yes
7	Nook	8'11" x 7'9"	60 sq. ft	Yes
8	Kitchen	9'10" x 20'1"	175 sq. ft	Yes

2956 Plaza Blanca, Santa Fe, NM, US**Room dimensions**

Floor 2

Total sqft: 950 Living area: 787

#		Dimensions	sqft	Counted as living area
9	Bedroom	14'8" x 9'8"	142 sq. ft	Yes
10	Bedroom	13'8" x 13'10"	167 sq. ft	Yes
11	Bath	7'3" x 6'7"	48 sq. ft	Yes
12	Open To Below	11'4" x 11'6"	131 sq. ft	No
13	Bath	11'0" x 5'8"	62 sq. ft	Yes
14	Loft	9'6" x 11'6"	114 sq. ft	Yes
15	Hall	9'11" x 5'8"	97 sq. ft	Yes
16	Hall	4'10" x 6'11"	34 sq. ft	Yes

2956 Plaza Blanca, Santa Fe, NM, US

1 Floor 1 - Dining Room



Dimensions: 9'6" x 15'11"
Area: 145 sq. ft
Counted as living area: Yes

Heated: Yes
Finished: Yes
Enclosed: Yes
Contiguous: Yes
Permitted: Yes
Wet space: No
Addition: No
Conversion: No

2 Floor 1 - Bath



Dimensions: 3'2" x 8'1"
Area: 26 sq. ft
Counted as living area: Yes

Heated: Yes
Finished: Yes
Enclosed: Yes
Contiguous: Yes
Permitted: Yes
Wet space: Yes
Addition: No
Conversion: No

2956 Plaza Blanca, Santa Fe, NM, US**3 Floor 1 - Outdoor**

Dimensions: 16'0" x 9'2"
Area: 115 sq. ft
Counted as living area: No

Heated: No
Finished: Yes
Enclosed: No
Contiguous: Yes
Permitted: Yes
Wet space: No
Addition: No
Conversion: No

4 Floor 1 - Entry

Dimensions: 9'9" x 7'5"
Area: 126 sq. ft
Counted as living area: Yes

Heated: Yes
Finished: Yes
Enclosed: Yes
Contiguous: Yes
Permitted: Yes
Wet space: No
Addition: No
Conversion: No

5 Floor 1 - Hall

Dimensions: 3'6" x 8'5"
Area: 30 sq. ft
Counted as living area: Yes

Heated: Yes
Finished: Yes
Enclosed: Yes
Contiguous: Yes
Permitted: Yes
Wet space: No
Addition: No
Conversion: No

2956 Plaza Blanca, Santa Fe, NM, US

6 Floor 1 - Living Room



Dimensions: 11'9" x 25'6"
Area: 297 sq. ft
Counted as living area: Yes

Heated: Yes
Finished: Yes
Enclosed: Yes
Contiguous: Yes
Permitted: Yes
Wet space: No
Addition: No
Conversion: No

7 Floor 1 - Nook



Dimensions: 8'11" x 7'9"
Area: 60 sq. ft
Counted as living area: Yes

Heated: Yes
Finished: Yes
Enclosed: Yes
Contiguous: Yes
Permitted: Yes
Wet space: No
Addition: No
Conversion: No

8 Floor 1 - Kitchen



Dimensions: 9'10" x 20'1"
Area: 175 sq. ft
Counted as living area: Yes

Heated: Yes
Finished: Yes
Enclosed: Yes
Contiguous: Yes
Permitted: Yes
Wet space: No
Addition: No
Conversion: No

2956 Plaza Blanca, Santa Fe, NM, US

9 Floor 2 - Bedroom



Dimensions: 14'8" x 9'8"
Area: 142 sq. ft
Counted as living area: Yes

Heated: Yes
Finished: Yes
Enclosed: Yes
Contiguous: Yes
Permitted: Yes
Wet space: No
Addition: No
Conversion: No

10 Floor 2 - Bedroom



Dimensions: 13'8" x 13'10"
Area: 167 sq. ft
Counted as living area: Yes

Heated: Yes
Finished: Yes
Enclosed: Yes
Contiguous: Yes
Permitted: Yes
Wet space: No
Addition: No
Conversion: No

11 Floor 2 - Bath



Dimensions: 7'3" x 6'7"
Area: 48 sq. ft
Counted as living area: Yes

Heated: Yes
Finished: Yes
Enclosed: Yes
Contiguous: Yes
Permitted: Yes
Wet space: Yes
Addition: No
Conversion: No

2956 Plaza Blanca, Santa Fe, NM, US**12 Floor 2 - Open To Below**

Dimensions: 11'4" x 11'6"
Area: 131 sq. ft
Counted as living area: No

Heated: No
Finished: No
Enclosed: No
Contiguous: Yes
Permitted: No
Wet space: No
Addition: No
Conversion: No

13 Floor 2 - Bath

Dimensions: 11'0" x 5'8"
Area: 62 sq. ft
Counted as living area: Yes

Heated: Yes
Finished: Yes
Enclosed: Yes
Contiguous: Yes
Permitted: Yes
Wet space: Yes
Addition: No
Conversion: No

14 Floor 2 - Loft

Dimensions: 9'6" x 11'6"
Area: 114 sq. ft
Counted as living area: Yes

Heated: Yes
Finished: Yes
Enclosed: Yes
Contiguous: Yes
Permitted: Yes
Wet space: No
Addition: No
Conversion: No

15 Floor 2 - Hall



Dimensions: 9'11" x 5'8"
Area: 97 sq. ft
Counted as living area: Yes

Heated: Yes
Finished: Yes
Enclosed: Yes
Contiguous: Yes
Permitted: Yes
Wet space: No
Addition: No
Conversion: No

16 Floor 2 - Hall



Dimensions: 4'10" x 6'11"
Area: 34 sq. ft
Counted as living area: Yes

Heated: Yes
Finished: Yes
Enclosed: Yes
Contiguous: Yes
Permitted: Yes
Wet space: No
Addition: No
Conversion: No