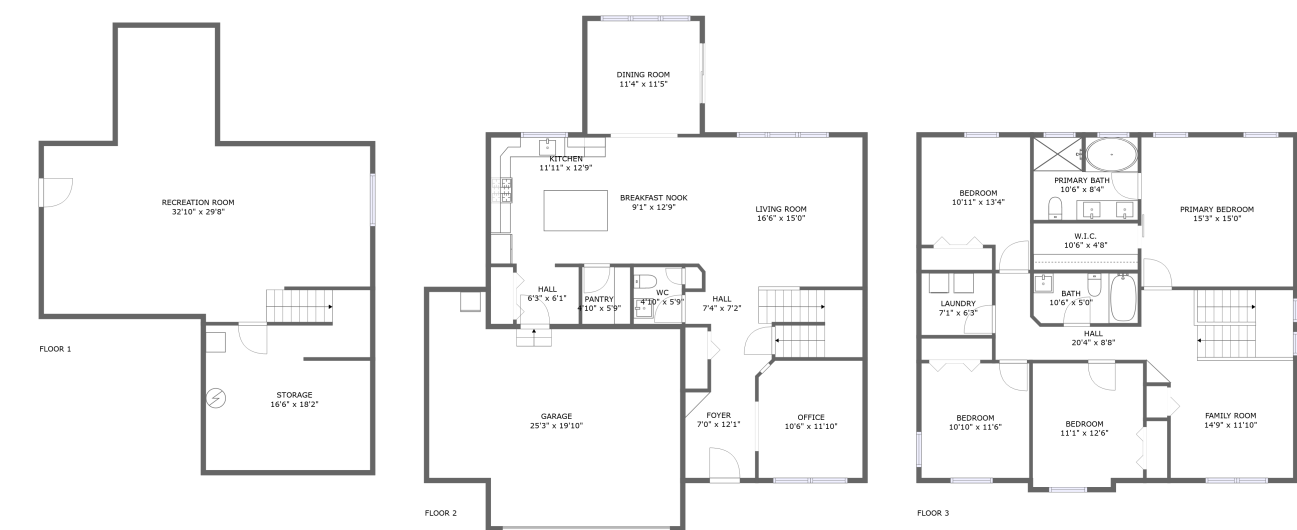




Home report


512 Stonebrook Dr,Romeoville,IL,US




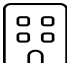
Property summary


**1** Garages


**4** Bedrooms

**2** Bathrooms

**1** Half baths

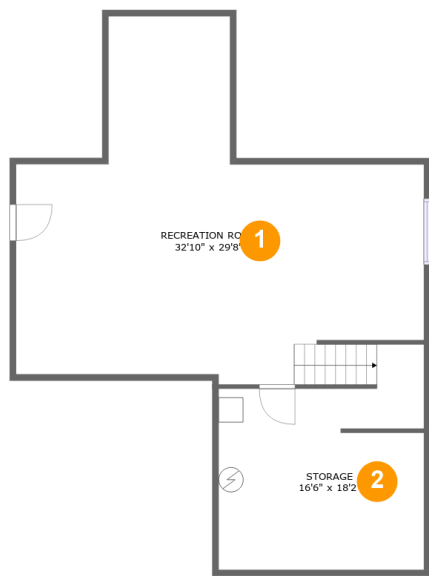
**3** Floors

**2,559** Gross living area sqft

**4,092** Total sqft

Home report

512 Stonebrook Dr,Romeoville,IL,US



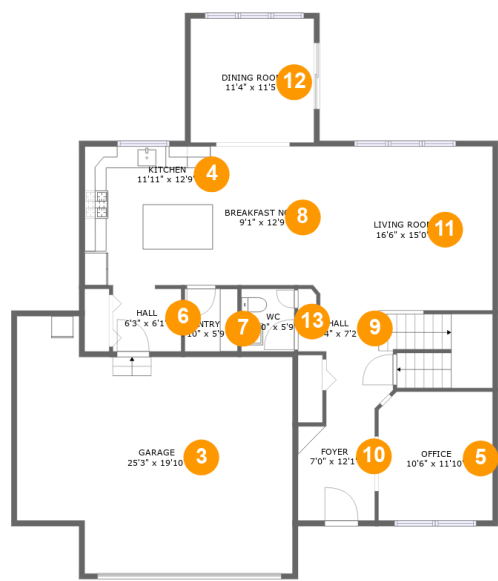
Room dimensions

Floor 1 Total sqft: 1010 Living area: 0

#		Dimensions	sqft	Counted as living area
1	Recreation Room	32'10" x 29'8"	670 sq. ft	No
2	Storage	16'6" x 18'2"	252 sq. ft	No

Home report

512 Stonebrook Dr,Romeoville,IL,US



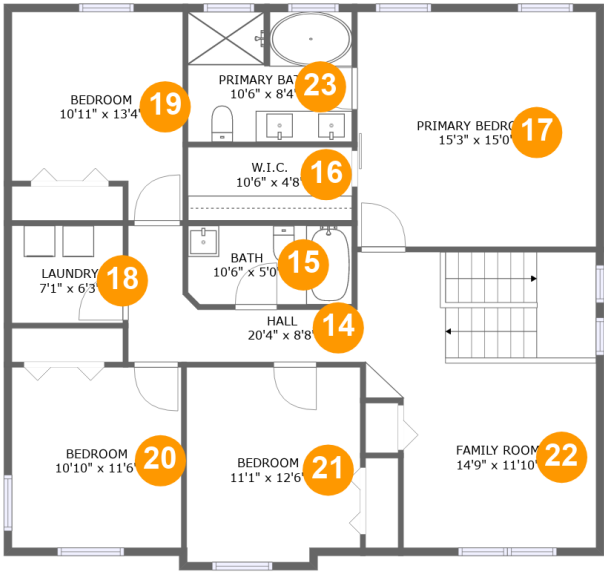
Room dimensions

Floor 2 Total sqft: 1719 Living area: 1196

#		Dimensions	sqft	Counted as living area
3	Garage	25'3" x 19'10"	493 sq. ft	No
4	Kitchen	11'11" x 12'9"	151 sq. ft	Yes
5	Office	10'6" x 11'10"	123 sq. ft	Yes
6	Hall	6'3" x 6'1"	37 sq. ft	Yes
7	Pantry	4'10" x 5'9"	28 sq. ft	Yes
8	Breakfast Nook	9'1" x 12'9"	115 sq. ft	Yes
9	Hall	7'4" x 7'2"	71 sq. ft	Yes
10	Foyer	7'0" x 12'1"	78 sq. ft	Yes
11	Living Room	16'6" x 15'0"	246 sq. ft	Yes
12	Dining Room	11'4" x 11'5"	129 sq. ft	Yes
13	WC	4'10" x 5'9"	28 sq. ft	Yes

Home report

512 Stonebrook Dr,Romeoville,IL,US

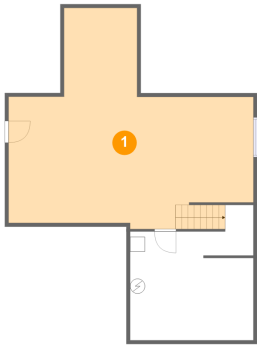


Room dimensions

Floor 3 Total sqft: 1363 Living area: 1363

#		Dimensions	sqft	Counted as living area
14	Hall	20'4" x 8'8"	177 sq. ft	Yes
15	Bath	10'6" x 5'0"	53 sq. ft	Yes
16	W.I.C.	10'6" x 4'8"	49 sq. ft	Yes
17	Primary Bedroom	15'3" x 15'0"	230 sq. ft	Yes
18	Laundry	7'1" x 6'3"	44 sq. ft	Yes
19	Bedroom	10'11" x 13'4"	127 sq. ft	Yes
20	Bedroom	10'10" x 11'6"	125 sq. ft	Yes
21	Bedroom	11'1" x 12'6"	136 sq. ft	Yes
22	Family Room	14'9" x 11'10"	151 sq. ft	Yes
23	Primary Bath	10'6" x 8'4"	86 sq. ft	Yes

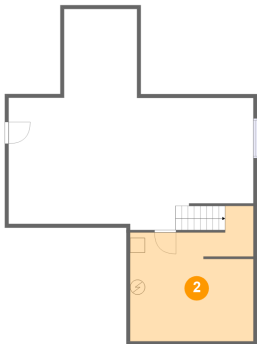
1 Floor 1 - Recreation Room



Dimensions: 32'10" x 29'8"
Area: 670 sq. ft
Counted as living area: No

Heated: Yes
Finished: No
Enclosed: Yes
Contiguous: Yes
Permitted: Yes
Wet space: No
Addition: No
Conversion: No

2 Floor 1 - Storage



Dimensions: 16'6" x 18'2"
Area: 252 sq. ft
Counted as living area: No

Heated: No
Finished: No
Enclosed: No
Contiguous: Yes
Permitted: Yes
Wet space: No
Addition: No
Conversion: No

3 Floor 2 - Garage



Dimensions: 25'3" x 19'10"
Area: 493 sq. ft
Counted as living area: No

Heated: No
Finished: No
Enclosed: Yes
Contiguous: Yes
Permitted: Yes
Wet space: No
Addition: No
Conversion: No

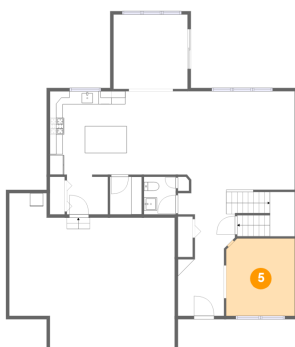
4 Floor 2 - Kitchen



Dimensions: 11'11" x 12'9"
Area: 151 sq. ft
Counted as living area: Yes

Heated: Yes
Finished: Yes
Enclosed: Yes
Contiguous: Yes
Permitted: Yes
Wet space: No
Addition: No
Conversion: No

5 Floor 2 - Office



Dimensions: 10'6" x 11'10"
Area: 123 sq. ft
Counted as living area: Yes

Heated: Yes
Finished: Yes
Enclosed: Yes
Contiguous: Yes
Permitted: Yes
Wet space: No
Addition: No
Conversion: No

6 Floor 2 - Hall



Dimensions: 6'3" x 6'1"
Area: 37 sq. ft
Counted as living area: Yes

Heated: Yes
Finished: Yes
Enclosed: Yes
Contiguous: Yes
Permitted: Yes
Wet space: No
Addition: No
Conversion: No

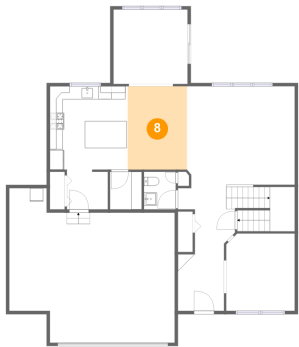
7 Floor 2 - Pantry



Dimensions: 4'10" x 5'9"
Area: 28 sq. ft
Counted as living area: Yes

Heated: Yes
Finished: Yes
Enclosed: Yes
Contiguous: Yes
Permitted: Yes
Wet space: No
Addition: No
Conversion: No

8 Floor 2 - Breakfast Nook



Dimensions: 9'1" x 12'9"
Area: 115 sq. ft
Counted as living area: Yes

Heated: Yes
Finished: Yes
Enclosed: Yes
Contiguous: Yes
Permitted: Yes
Wet space: No
Addition: No
Conversion: No

9 Floor 2 - Hall



Dimensions: 7'4" x 7'2"
Area: 71 sq. ft
Counted as living area: Yes

Heated: Yes
Finished: Yes
Enclosed: Yes
Contiguous: Yes
Permitted: Yes
Wet space: No
Addition: No
Conversion: No

10 Floor 2 - Foyer



Dimensions: 7'0" x 12'1"
Area: 78 sq. ft
Counted as living area: Yes

Heated: Yes
Finished: Yes
Enclosed: Yes
Contiguous: Yes
Permitted: Yes
Wet space: No
Addition: No
Conversion: No

11 Floor 2 - Living Room



Dimensions: 16'6" x 15'0"
Area: 246 sq. ft
Counted as living area: Yes

Heated: Yes
Finished: Yes
Enclosed: Yes
Contiguous: Yes
Permitted: Yes
Wet space: No
Addition: No
Conversion: No

12 Floor 2 - Dining Room



Dimensions: 11'4" x 11'5"
Area: 129 sq. ft
Counted as living area: Yes

Heated: Yes
Finished: Yes
Enclosed: Yes
Contiguous: Yes
Permitted: Yes
Wet space: No
Addition: No
Conversion: No

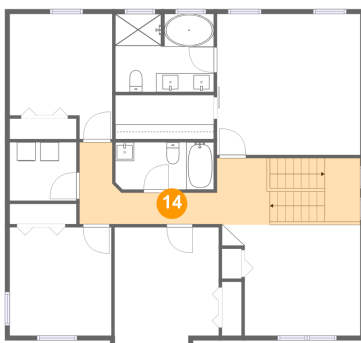
13 Floor 2 - WC



Dimensions: 4'10" x 5'9"
Area: 28 sq. ft
Counted as living area: Yes

Heated: Yes
Finished: Yes
Enclosed: Yes
Contiguous: Yes
Permitted: Yes
Wet space: Yes
Addition: No
Conversion: No

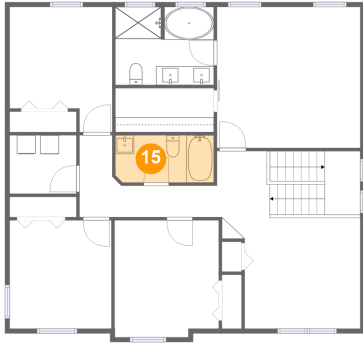
14 Floor 3 - Hall



Dimensions: 20'4" x 8'8"
Area: 177 sq. ft
Counted as living area: Yes

Heated: Yes
Finished: Yes
Enclosed: Yes
Contiguous: Yes
Permitted: Yes
Wet space: No
Addition: No
Conversion: No

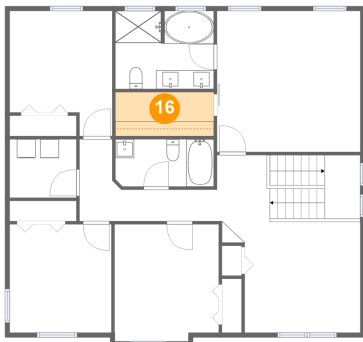
15 Floor 3 - Bath



Dimensions: 10'6" x 5'0"
Area: 53 sq. ft
Counted as living area: Yes

Heated: Yes
Finished: Yes
Enclosed: Yes
Contiguous: Yes
Permitted: Yes
Wet space: Yes
Addition: No
Conversion: No

16 Floor 3 - W.I.C.



Dimensions: 10'6" x 4'8"
Area: 49 sq. ft
Counted as living area: Yes

Heated: Yes
Finished: Yes
Enclosed: Yes
Contiguous: Yes
Permitted: Yes
Wet space: No
Addition: No
Conversion: No

17 Floor 3 - Primary Bedroom



Dimensions: 15'3" x 15'0"
Area: 230 sq. ft
Counted as living area: Yes

Heated: Yes
Finished: Yes
Enclosed: Yes
Contiguous: Yes
Permitted: Yes
Wet space: No
Addition: No
Conversion: No

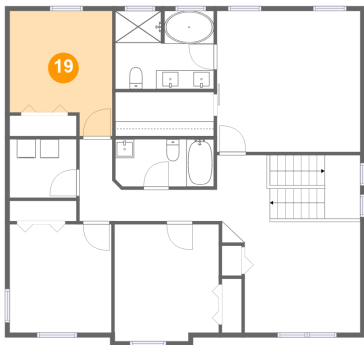
18 Floor 3 - Laundry



Dimensions: 7'1" x 6'3"
Area: 44 sq. ft
Counted as living area: Yes

Heated: Yes
Finished: Yes
Enclosed: Yes
Contiguous: Yes
Permitted: Yes
Wet space: No
Addition: No
Conversion: No

19 Floor 3 - Bedroom



Dimensions: 10'11" x 13'4"
Area: 127 sq. ft
Counted as living area: Yes

Heated: Yes
Finished: Yes
Enclosed: Yes
Contiguous: Yes
Permitted: Yes
Wet space: No
Addition: No
Conversion: No

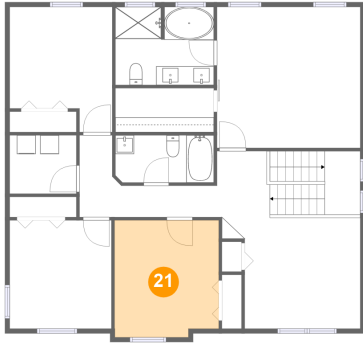
20 Floor 3 - Bedroom



Dimensions: 10'10" x 11'6"
Area: 125 sq. ft
Counted as living area: Yes

Heated: Yes
Finished: Yes
Enclosed: Yes
Contiguous: Yes
Permitted: Yes
Wet space: No
Addition: No
Conversion: No

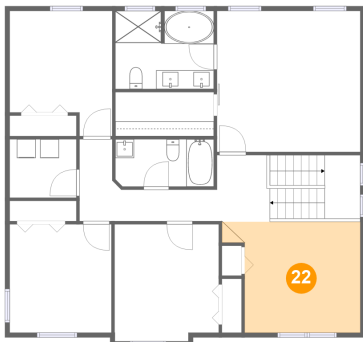
21 Floor 3 - Bedroom



Dimensions: 11'1" x 12'6"
Area: 136 sq. ft
Counted as living area: Yes

Heated: Yes
Finished: Yes
Enclosed: Yes
Contiguous: Yes
Permitted: Yes
Wet space: No
Addition: No
Conversion: No

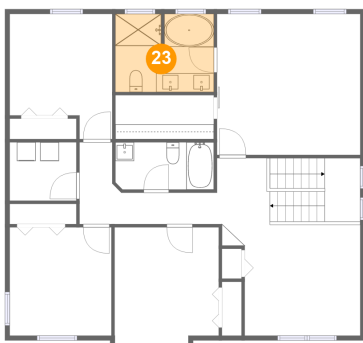
22 Floor 3 - Family Room



Dimensions: 14'9" x 11'10"
Area: 151 sq. ft
Counted as living area: Yes

Heated: Yes
Finished: Yes
Enclosed: Yes
Contiguous: Yes
Permitted: Yes
Wet space: No
Addition: No
Conversion: No

23 Floor 3 - Primary Bath



Dimensions: 10'6" x 8'4"
Area: 86 sq. ft
Counted as living area: Yes

Heated: Yes
Finished: Yes
Enclosed: Yes
Contiguous: Yes
Permitted: Yes
Wet space: Yes
Addition: No
Conversion: No