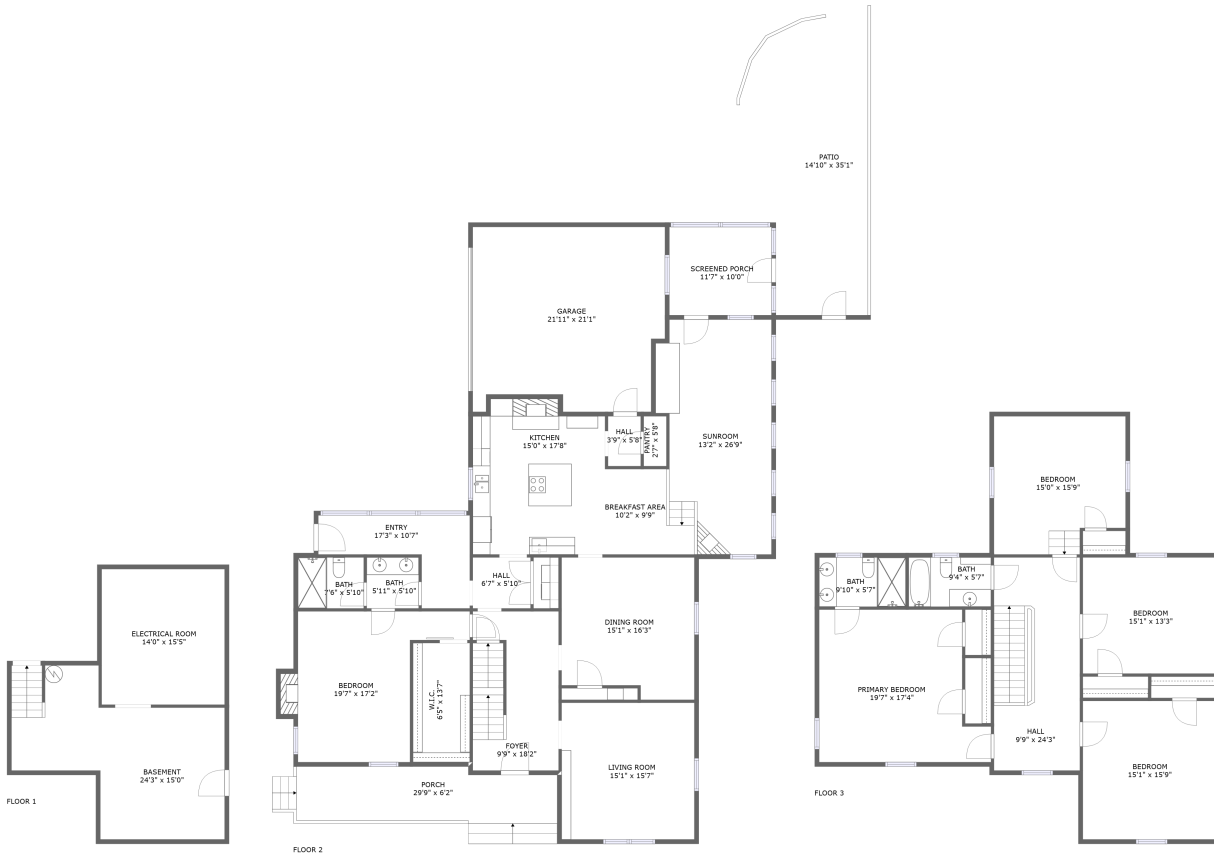


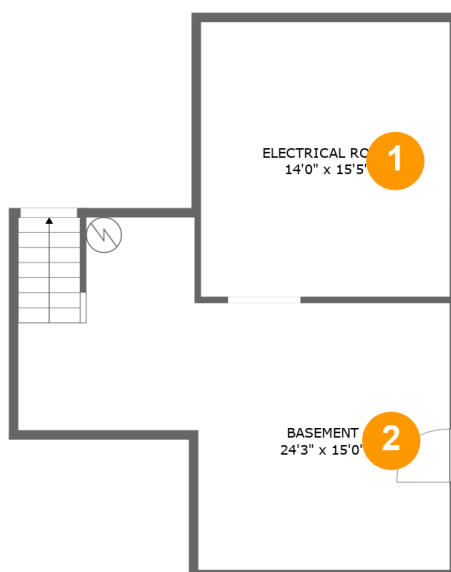
7217 La Marre Drive, Hollins Court, Hollins, Roanoke County, Virginia, United States, 24019



Property Summary

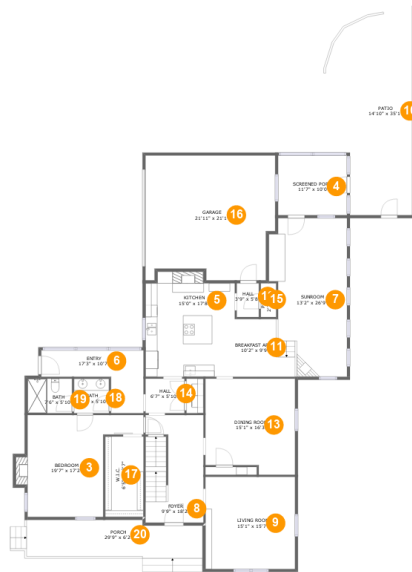
1 garages **5** bedrooms **3** bathrooms **0** half baths

3 floors **3,201** Gross Living Area sqft **5,451** total sqft

**7217 La Marre Drive, Hollins Court, Hollins,
Roanoke County, Virginia, United States, 24019****Room Dimensions****Floor 1****Total sqft: 611****Living area: 0**

#	Room name	Dimensions	Area (sqft)	Counted as Living Area
1	Electrical Room	14'0" x 15'5"	216 sq. ft	No
2	Basement	24'3" x 15'0"	331 sq. ft	No

7217 La Marre Drive, Hollins Court, Hollins, Roanoke County, Virginia, United States, 24019



Room Dimensions

Floor 2

Total sqft: 3310

Living area: 1748

#	Room name	Dimensions	Area (sqft)	Counted as Living Area
3	Bedroom	19'7" x 17'2"	251 sq. ft	Yes
4	Screened Porch	11'7" x 10'0"	117 sq. ft	No
5	Kitchen	15'0" x 17'8"	252 sq. ft	Yes
6	Entry	17'3" x 10'7"	111 sq. ft	Yes
7	Sunroom	13'2" x 26'9"	316 sq. ft	No
8	Foyer	9'9" x 18'2"	173 sq. ft	Yes
9	Living Room	15'1" x 15'7"	235 sq. ft	Yes
10	Patio	14'10" x 35'1"	401 sq. ft	No
11	Breakfast Area	10'2" x 9'9"	78 sq. ft	Yes
12	Hall	3'9" x 5'8"	21 sq. ft	Yes
13	Dining Room	15'1" x 16'3"	230 sq. ft	Yes

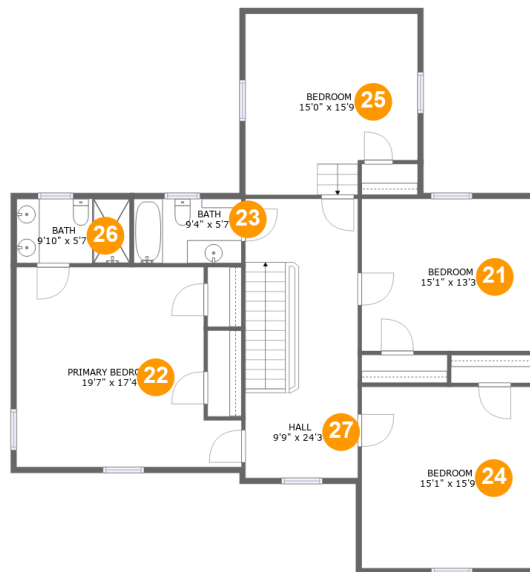
Scan captured on Wed, 11 Sep 2024 16:11:48 GMT

Information is calculated by CubiCasa technology; deemed highly reliable but not guaranteed.

**7217 La Marre Drive, Hollins Court, Hollins,
Roanoke County, Virginia, United States, 24019**

#	Room name	Dimensions	Area (sqft)	Counted as Living Area
14	Hall	6'7" x 5'10"	38 sq. ft	Yes
15	Pantry	2'7" x 5'8"	15 sq. ft	Yes
16	Garage	21'11" x 21'1"	430 sq. ft	No
17	W.i.c.	6'5" x 13'7"	88 sq. ft	Yes
18	Bath	5'11" x 5'10"	34 sq. ft	Yes
19	Bath	7'6" x 5'10"	43 sq. ft	Yes
20	Porch	29'9" x 6'2"	218 sq. ft	No

7217 La Marre Drive, Hollins Court, Hollins, Roanoke County, Virginia, United States, 24019



Room Dimensions

Floor 3

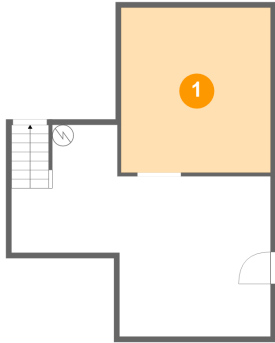
Total sqft: 1530

Living area: 1453

#	Room name	Dimensions	Area (sqft)	Counted as Living Area
21	Bedroom	15'1" x 13'3"	200 sq. ft	Yes
22	Primary Bedroom	19'7" x 17'4"	296 sq. ft	Yes
23	Bath	9'4" x 5'7"	53 sq. ft	Yes
24	Bedroom	15'1" x 15'9"	238 sq. ft	Yes
25	Bedroom	15'0" x 15'9"	167 sq. ft	Yes
26	Bath	9'10" x 5'7"	55 sq. ft	Yes
27	Hall	9'9" x 24'3"	237 sq. ft	Yes

7217 La Marre Drive, Hollins Court, Hollins, Roanoke County, Virginia, United States, 24019

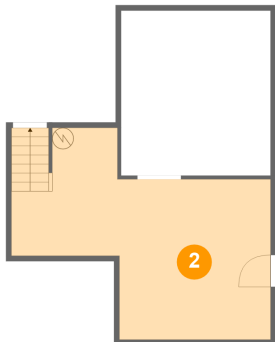
1 Floor 1 - Electrical Room



Dimensions: 14'0" x 15'5"
Area: 216 sq. ft
Counted as Living Area: No

Heated: No
Finished: No
Enclosed: Yes
Contiguous: Yes
Permitted: Yes
Wet Space: No
Addition: No
Conversion: No

2 Floor 1 - Basement



Dimensions: 24'3" x 15'0"
Area: 331 sq. ft
Counted as Living Area: No

Heated: Yes
Finished: No
Enclosed: Yes
Contiguous: Yes
Permitted: Yes
Wet Space: No
Addition: No
Conversion: No

**7217 La Marre Drive, Hollins Court, Hollins,
Roanoke County, Virginia, United States, 24019****3 Floor 2 - Bedroom**

Dimensions: 19'7" x 17'2"
Area: 251 sq. ft
Counted as Living Area:
Yes

Heated: Yes
Finished: Yes
Enclosed: Yes
Contiguous:
Yes
Permitted: Yes
Wet Space: No
Addition: No
Conversion: No

4 Floor 2 - Screened Porch

Dimensions: 11'7" x 10'0"
Area: 117 sq. ft
Counted as Living Area: No

Heated: No
Finished: Yes
Enclosed: No
Contiguous: Yes
Permitted: Yes
Wet Space: No
Addition: No
Conversion: No

5 Floor 2 - Kitchen

Dimensions: 15'0" x 17'8"
Area: 252 sq. ft
Counted as Living Area:
Yes

Heated: Yes
Finished: Yes
Enclosed: Yes
Contiguous:
Yes
Permitted: Yes
Wet Space: No
Addition: No
Conversion: No

7217 La Marre Drive, Hollins Court, Hollins, Roanoke County, Virginia, United States, 24019

6 Floor 2 - Entry



Dimensions: 17'3" x 10'7"
Area: 111 sq. ft
Counted as Living Area:
Yes

Heated: Yes
Finished: Yes
Enclosed: Yes
Contiguous:
Yes
Permitted: Yes
Wet Space: No
Addition: No
Conversion: No

7 Floor 2 - Sunroom



Dimensions: 13'2" x 26'9"
Area: 316 sq. ft
Counted as Living Area: No

Heated: Yes
Finished: Yes
Enclosed: Yes
Contiguous: Yes
Permitted: Yes
Wet Space: No
Addition: No
Conversion: No

8 Floor 2 - Foyer



Dimensions: 9'9" x 18'2"
Area: 173 sq. ft
Counted as Living Area:
Yes

Heated: Yes
Finished: Yes
Enclosed: Yes
Contiguous:
Yes
Permitted: Yes
Wet Space: No
Addition: No
Conversion: No

7217 La Marre Drive, Hollins Court, Hollins, Roanoke County, Virginia, United States, 24019

9 Floor 2 - Living Room



Dimensions: 15'1" x 15'7"
Area: 235 sq. ft
Counted as Living Area:
Yes

Heated: Yes
Finished: Yes
Enclosed: Yes
Contiguous:
Yes
Permitted: Yes
Wet Space: No
Addition: No
Conversion: No

10 Floor 2 - Patio



Dimensions: 14'10" x 35'1"
Area: 401 sq. ft
Counted as Living Area: No

Heated: No
Finished: Yes
Enclosed: No
Contiguous: Yes
Permitted: Yes
Wet Space: No
Addition: No
Conversion: No

11 Floor 2 - Breakfast Area



Dimensions: 10'2" x 9'9"
Area: 78 sq. ft
Counted as Living Area:
Yes

Heated: Yes
Finished: Yes
Enclosed: Yes
Contiguous:
Yes
Permitted: Yes
Wet Space: No
Addition: No
Conversion: No

7217 La Marre Drive, Hollins Court, Hollins, Roanoke County, Virginia, United States, 24019

12 Floor 2 - Hall



Dimensions: 3'9" x 5'8"
Area: 21 sq. ft
Counted as Living Area:
Yes

Heated: Yes
Finished: Yes
Enclosed: Yes
Contiguous:
Yes
Permitted: Yes
Wet Space: No
Addition: No
Conversion: No

13 Floor 2 - Dining Room



Dimensions: 15'1" x 16'3"
Area: 230 sq. ft
Counted as Living Area:
Yes

Heated: Yes
Finished: Yes
Enclosed: Yes
Contiguous:
Yes
Permitted: Yes
Wet Space: No
Addition: No
Conversion: No

14 Floor 2 - Hall



Dimensions: 6'7" x 5'10"
Area: 38 sq. ft
Counted as Living Area:
Yes

Heated: Yes
Finished: Yes
Enclosed: Yes
Contiguous:
Yes
Permitted: Yes
Wet Space: No
Addition: No
Conversion: No

**7217 La Marre Drive, Hollins Court, Hollins,
Roanoke County, Virginia, United States, 24019****15 Floor 2 - Pantry**

Dimensions: 2'7" x 5'8"
Area: 15 sq. ft
Counted as Living Area:
Yes

Heated: Yes
Finished: Yes
Enclosed: Yes
Contiguous:
Yes
Permitted: Yes
Wet Space: No
Addition: No
Conversion: No

16 Floor 2 - Garage

Dimensions: 21'11" x 21'1"
Area: 430 sq. ft
Counted as Living Area: No

Heated: No
Finished: No
Enclosed: Yes
Contiguous: Yes
Permitted: Yes
Wet Space: No
Addition: No
Conversion: No

17 Floor 2 - W.i.c.

Dimensions: 6'5" x 13'7"
Area: 88 sq. ft
Counted as Living Area:
Yes

Heated: Yes
Finished: Yes
Enclosed: Yes
Contiguous:
Yes
Permitted: Yes
Wet Space: No
Addition: No
Conversion: No

7217 La Marre Drive, Hollins Court, Hollins, Roanoke County, Virginia, United States, 24019

18 Floor 2 - Bath



Dimensions: 5'11" x 5'10"
Area: 34 sq. ft
Counted as Living Area:
Yes

Heated: Yes
Finished: Yes
Enclosed: Yes
Contiguous:
Yes
Permitted: Yes
Wet Space: Yes
Addition: No
Conversion: No

19 Floor 2 - Bath



Dimensions: 7'6" x 5'10"
Area: 43 sq. ft
Counted as Living Area:
Yes

Heated: Yes
Finished: Yes
Enclosed: Yes
Contiguous:
Yes
Permitted: Yes
Wet Space: Yes
Addition: No
Conversion: No

20 Floor 2 - Porch



Dimensions: 29'9" x 6'2"
Area: 218 sq. ft
Counted as Living Area: No

Heated: No
Finished: Yes
Enclosed: No
Contiguous: Yes
Permitted: Yes
Wet Space: No
Addition: No
Conversion: No

7217 La Marre Drive, Hollins Court, Hollins, Roanoke County, Virginia, United States, 24019

21 Floor 3 - Bedroom



Dimensions: 15'1" x 13'3"
Area: 200 sq. ft
Counted as Living Area:
Yes

Heated: Yes
Finished: Yes
Enclosed: Yes
Contiguous:
Yes
Permitted: Yes
Wet Space: No
Addition: No
Conversion: No

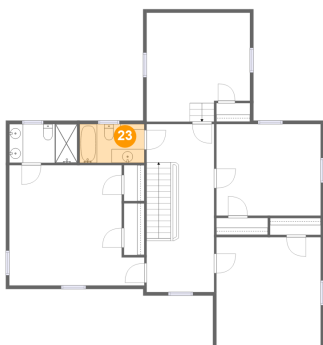
22 Floor 3 - Primary Bedroom



Dimensions: 19'7" x 17'4"
Area: 296 sq. ft
Counted as Living Area:
Yes

Heated: Yes
Finished: Yes
Enclosed: Yes
Contiguous:
Yes
Permitted: Yes
Wet Space: No
Addition: No
Conversion: No

23 Floor 3 - Bath

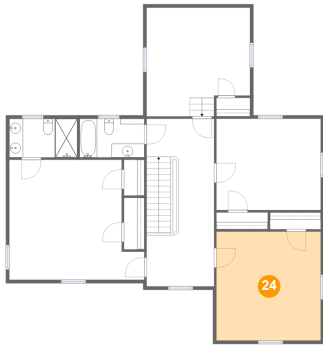


Dimensions: 9'4" x 5'7"
Area: 53 sq. ft
Counted as Living Area:
Yes

Heated: Yes
Finished: Yes
Enclosed: Yes
Contiguous:
Yes
Permitted: Yes
Wet Space: Yes
Addition: No
Conversion: No

7217 La Marre Drive, Hollins Court, Hollins, Roanoke County, Virginia, United States, 24019

24 Floor 3 - Bedroom



Dimensions: 15'1" x 15'9"
Area: 238 sq. ft
Counted as Living Area:
Yes

Heated: Yes
Finished: Yes
Enclosed: Yes
Contiguous:
Yes
Permitted: Yes
Wet Space: No
Addition: No
Conversion: No

25 Floor 3 - Bedroom



Dimensions: 15'0" x 15'9"
Area: 167 sq. ft
Counted as Living Area:
Yes

Heated: Yes
Finished: Yes
Enclosed: Yes
Contiguous:
Yes
Permitted: Yes
Wet Space: No
Addition: No
Conversion: No

26 Floor 3 - Bath

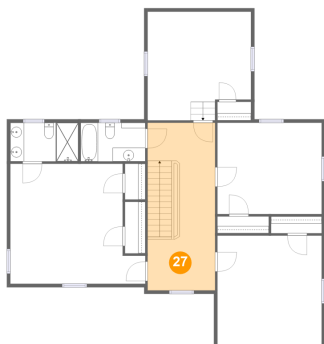


Dimensions: 9'10" x 5'7"
Area: 55 sq. ft
Counted as Living Area:
Yes

Heated: Yes
Finished: Yes
Enclosed: Yes
Contiguous:
Yes
Permitted: Yes
Wet Space: Yes
Addition: No
Conversion: No

**7217 La Marre Drive, Hollins Court, Hollins,
Roanoke County, Virginia, United States, 24019**

27 Floor 3 - Hall



Dimensions: 9'9" x 24'3"
Area: 237 sq. ft
Counted as Living Area:
Yes

Heated: Yes
Finished: Yes
Enclosed: Yes
Contiguous:
Yes
Permitted: Yes
Wet Space: No
Addition: No
Conversion: No