



Home report


220 North Broad Street, Langhorne Place, Salem, Salem city,
Virginia, United States, 24153




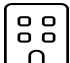
Property summary


 **0** Garages


 **4** Bedrooms

 **3** Bathrooms

 **0** Half baths

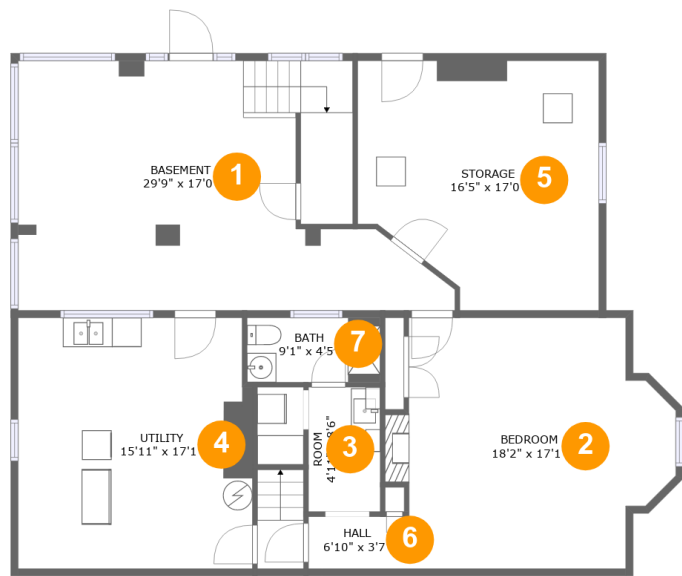
 **3** Floors

 **2,436** Gross living area sqft

 **4,111** Total sqft

Home report

220 North Broad Street, Langhorne Place, Salem, Salem city,
Virginia, United States, 24153



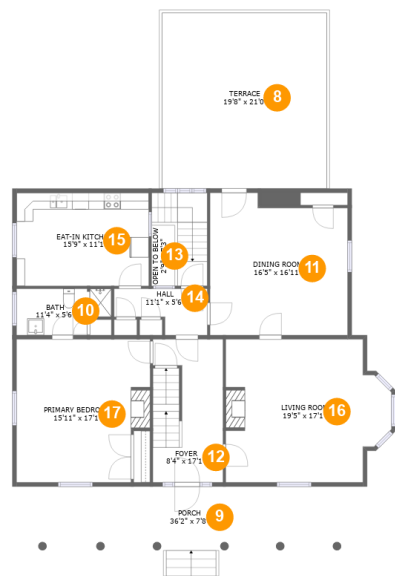
Room dimensions

Floor 1 Total sqft: 1500 Living area: 121

#		Max Dimensions	sqft	Included
1	Basement	29'9" x 17'0"	410 sq. ft	No
2	Bedroom	18'2" x 17'1"	284 sq. ft	No
3	Room	4'11" x 8'6"	41 sq. ft	Yes
4	Utility	15'11" x 17'1"	269 sq. ft	No
5	Storage	16'5" x 17'0"	250 sq. ft	No
6	Hall	6'10" x 3'7"	24 sq. ft	No
7	Bath	9'1" x 4'5"	40 sq. ft	Yes

Home report

220 North Broad Street, Langhorne Place, Salem, Salem city,
Virginia, United States, 24153



Room dimensions

Floor 2 Total sqft: 1775 Living area: 1479

#		Max Dimensions	sqft	Included
8	Terrace	19'8" x 21'0"	412 sq. ft	No
9	Porch	36'2" x 7'8"	276 sq. ft	No
10	Bath	11'4" x 5'6"	56 sq. ft	Yes
11	Dining Room	16'5" x 16'11"	259 sq. ft	Yes
12	Foyer	8'4" x 17'1"	139 sq. ft	Yes
13	Open To Below	2'9" x 7'3"	20 sq. ft	No
14	Hall	11'1" x 5'6"	48 sq. ft	Yes
15	Eat-in Kitchen	15'9" x 11'1"	175 sq. ft	Yes
16	Living Room	19'5" x 17'1"	302 sq. ft	Yes
17	Primary Bedroom	15'11" x 17'1"	256 sq. ft	Yes

Home report

220 North Broad Street, Langhorne Place, Salem, Salem city,
Virginia, United States, 24153



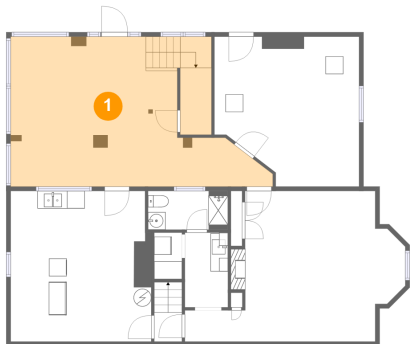
Room dimensions

Floor 3 Total sqft: 836 Living area: 836

#		Max Dimensions	sqft	Included
18	Bath	11'1" x 5'4"	52 sq. ft	Yes
19	Bedroom	15'11" x 17'1"	257 sq. ft	Yes
20	Hall	8'4" x 17'1"	143 sq. ft	Yes
21	Bedroom	16'4" x 17'1"	251 sq. ft	Yes

220 North Broad Street, Langhorne Place, Salem, Salem city,
Virginia, United States, 24153

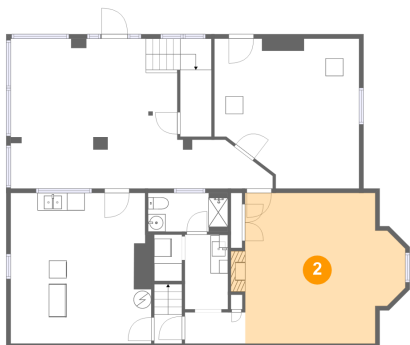
1 Floor 1 - Basement



Max Dimensions: 29'9" x 17'0"
Calculated Area: 410 sq. ft
Included: No

Heated: Yes
Finished: No
Enclosed: Yes
Contiguous: Yes
Permitted: Yes
Wet space: No
Addition: No
Conversion: No

2 Floor 1 - Bedroom

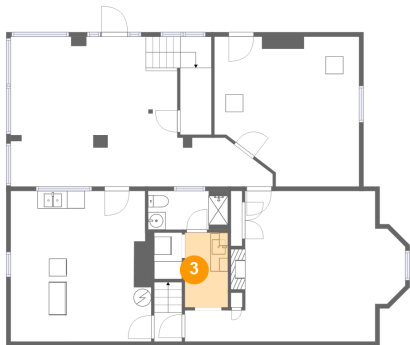


Max Dimensions: 18'2" x 17'1"
Calculated Area: 284 sq. ft
Included: No

Heated: Yes
Finished: No
Enclosed: Yes
Contiguous: Yes
Permitted: Yes
Wet space: No
Addition: No
Conversion: No

220 North Broad Street, Langhorne Place, Salem, Salem city,
Virginia, United States, 24153

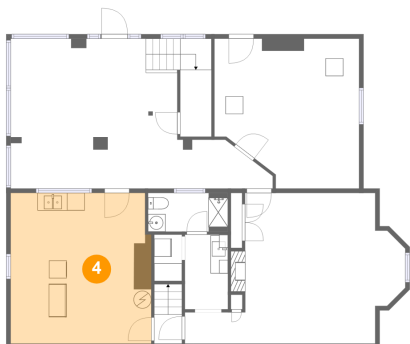
3 Floor 1 - Room



Max Dimensions: 4'11" x 8'6"
Calculated Area: 41 sq. ft
Included: Yes

Heated: Yes
Finished: Yes
Enclosed: Yes
Contiguous: Yes
Permitted: Yes
Wet space: No
Addition: No
Conversion: No

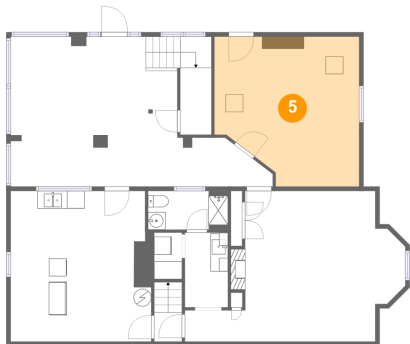
4 Floor 1 - Utility



Max Dimensions: 15'11" x 17'1"
Calculated Area: 269 sq. ft
Included: No

Heated: Yes
Finished: No
Enclosed: Yes
Contiguous: Yes
Permitted: Yes
Wet space: No
Addition: No
Conversion: No

5 Floor 1 - Storage

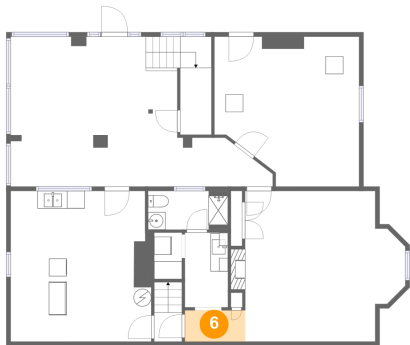


Max Dimensions: 16'5" x 17'0"
Calculated Area: 250 sq. ft
Included: No

Heated: No
Finished: No
Enclosed: No
Contiguous: Yes
Permitted: Yes
Wet space: No
Addition: No
Conversion: No

220 North Broad Street, Langhorne Place, Salem, Salem city,
Virginia, United States, 24153

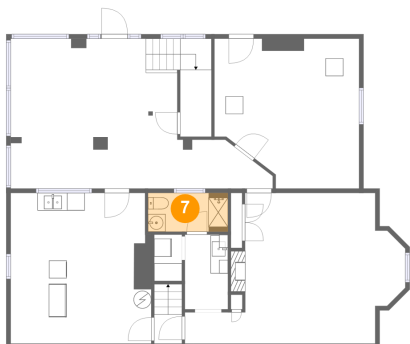
6 Floor 1 - Hall



Max Dimensions: 6'10" x 3'7"
Calculated Area: 24 sq. ft
Included: No

Heated: Yes
Finished: No
Enclosed: Yes
Contiguous: Yes
Permitted: Yes
Wet space: No
Addition: No
Conversion: No

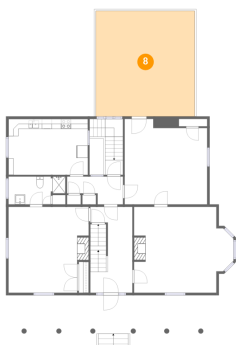
7 Floor 1 - Bath



Max Dimensions: 9'1" x 4'5"
Calculated Area: 40 sq. ft
Included: Yes

Heated: Yes
Finished: Yes
Enclosed: Yes
Contiguous: Yes
Permitted: Yes
Wet space: Yes
Addition: No
Conversion: No

8 Floor 2 - Terrace



Max Dimensions: 19'8" x 21'0"
Calculated Area: 412 sq. ft
Included: No

Heated: No
Finished: No
Enclosed: No
Contiguous: Yes
Permitted: No
Wet space: No
Addition: No
Conversion: No

220 North Broad Street, Langhorne Place, Salem, Salem city,
Virginia, United States, 24153

9 Floor 2 - Porch



Max Dimensions: 36'2" x 7'8"
Calculated Area: 276 sq. ft
Included: No

Heated: No
Finished: Yes
Enclosed: No
Contiguous: Yes
Permitted: Yes
Wet space: No
Addition: No
Conversion: No

10 Floor 2 - Bath



Max Dimensions: 11'4" x 5'6"
Calculated Area: 56 sq. ft
Included: Yes

Heated: Yes
Finished: Yes
Enclosed: Yes
Contiguous: Yes
Permitted: Yes
Wet space: Yes
Addition: No
Conversion: No

11 Floor 2 - Dining Room

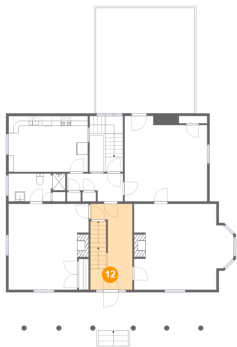


Max Dimensions: 16'5" x 16'11"
Calculated Area: 259 sq. ft
Included: Yes

Heated: Yes
Finished: Yes
Enclosed: Yes
Contiguous: Yes
Permitted: Yes
Wet space: No
Addition: No
Conversion: No

220 North Broad Street, Langhorne Place, Salem, Salem city,
Virginia, United States, 24153

12 Floor 2 - Foyer



Max Dimensions: 8'4" x 17'1"
Calculated Area: 139 sq. ft
Included: Yes

Heated: Yes
Finished: Yes
Enclosed: Yes
Contiguous: Yes
Permitted: Yes
Wet space: No
Addition: No
Conversion: No

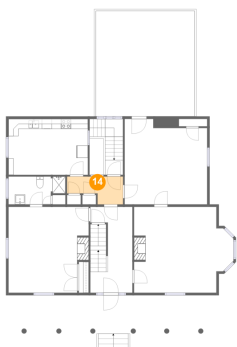
13 Floor 2 - Open To Below



Max Dimensions: 2'9" x 7'3"
Calculated Area: 20 sq. ft
Included: No

Heated: No
Finished: No
Enclosed: No
Contiguous: Yes
Permitted: No
Wet space: No
Addition: No
Conversion: No

14 Floor 2 - Hall

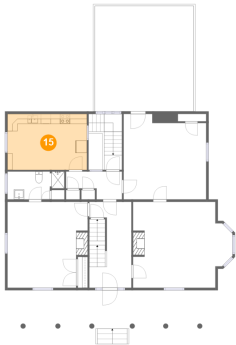


Max Dimensions: 11'1" x 5'6"
Calculated Area: 48 sq. ft
Included: Yes

Heated: Yes
Finished: Yes
Enclosed: Yes
Contiguous: Yes
Permitted: Yes
Wet space: No
Addition: No
Conversion: No

220 North Broad Street, Langhorne Place, Salem, Salem city,
Virginia, United States, 24153

15 Floor 2 - Eat-in Kitchen



Max Dimensions: 15'9" x 11'1"
Calculated Area: 175 sq. ft
Included: Yes

Heated: Yes
Finished: Yes
Enclosed: Yes
Contiguous: Yes
Permitted: Yes
Wet space: No
Addition: No
Conversion: No

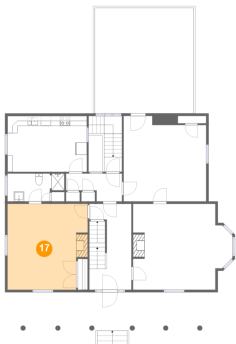
16 Floor 2 - Living Room



Max Dimensions: 19'5" x 17'1"
Calculated Area: 302 sq. ft
Included: Yes

Heated: Yes
Finished: Yes
Enclosed: Yes
Contiguous: Yes
Permitted: Yes
Wet space: No
Addition: No
Conversion: No

17 Floor 2 - Primary Bedroom

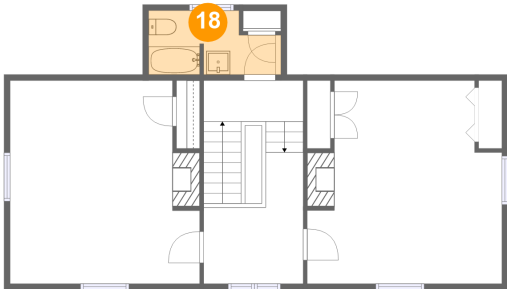


Max Dimensions: 15'11" x 17'1"
Calculated Area: 256 sq. ft
Included: Yes

Heated: Yes
Finished: Yes
Enclosed: Yes
Contiguous: Yes
Permitted: Yes
Wet space: No
Addition: No
Conversion: No

220 North Broad Street, Langhorne Place, Salem, Salem city,
Virginia, United States, 24153

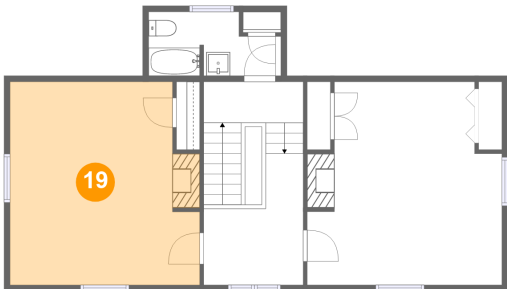
18 Floor 3 - Bath



Max Dimensions: 11'1" x 5'4"
Calculated Area: 52 sq. ft
Included: Yes

Heated: Yes
Finished: Yes
Enclosed: Yes
Contiguous: Yes
Permitted: Yes
Wet space: Yes
Addition: No
Conversion: No

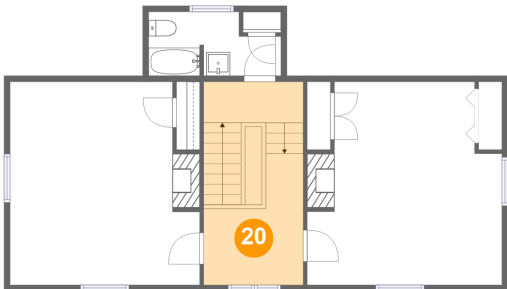
19 Floor 3 - Bedroom



Max Dimensions: 15'11" x 17'1"
Calculated Area: 257 sq. ft
Included: Yes

Heated: Yes
Finished: Yes
Enclosed: Yes
Contiguous: Yes
Permitted: Yes
Wet space: No
Addition: No
Conversion: No

20 Floor 3 - Hall

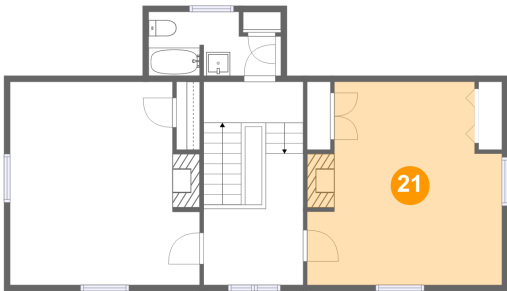


Max Dimensions: 8'4" x 17'1"
Calculated Area: 143 sq. ft
Included: Yes

Heated: Yes
Finished: Yes
Enclosed: Yes
Contiguous: Yes
Permitted: Yes
Wet space: No
Addition: No
Conversion: No

220 North Broad Street, Langhorne Place, Salem, Salem city,
Virginia, United States, 24153

21 Floor 3 - Bedroom



Max Dimensions: 16'4" x 17'1"
Calculated Area: 251 sq. ft
Included: Yes

Heated: Yes
Finished: Yes
Enclosed: Yes
Contiguous: Yes
Permitted: Yes
Wet space: No
Addition: No
Conversion: No