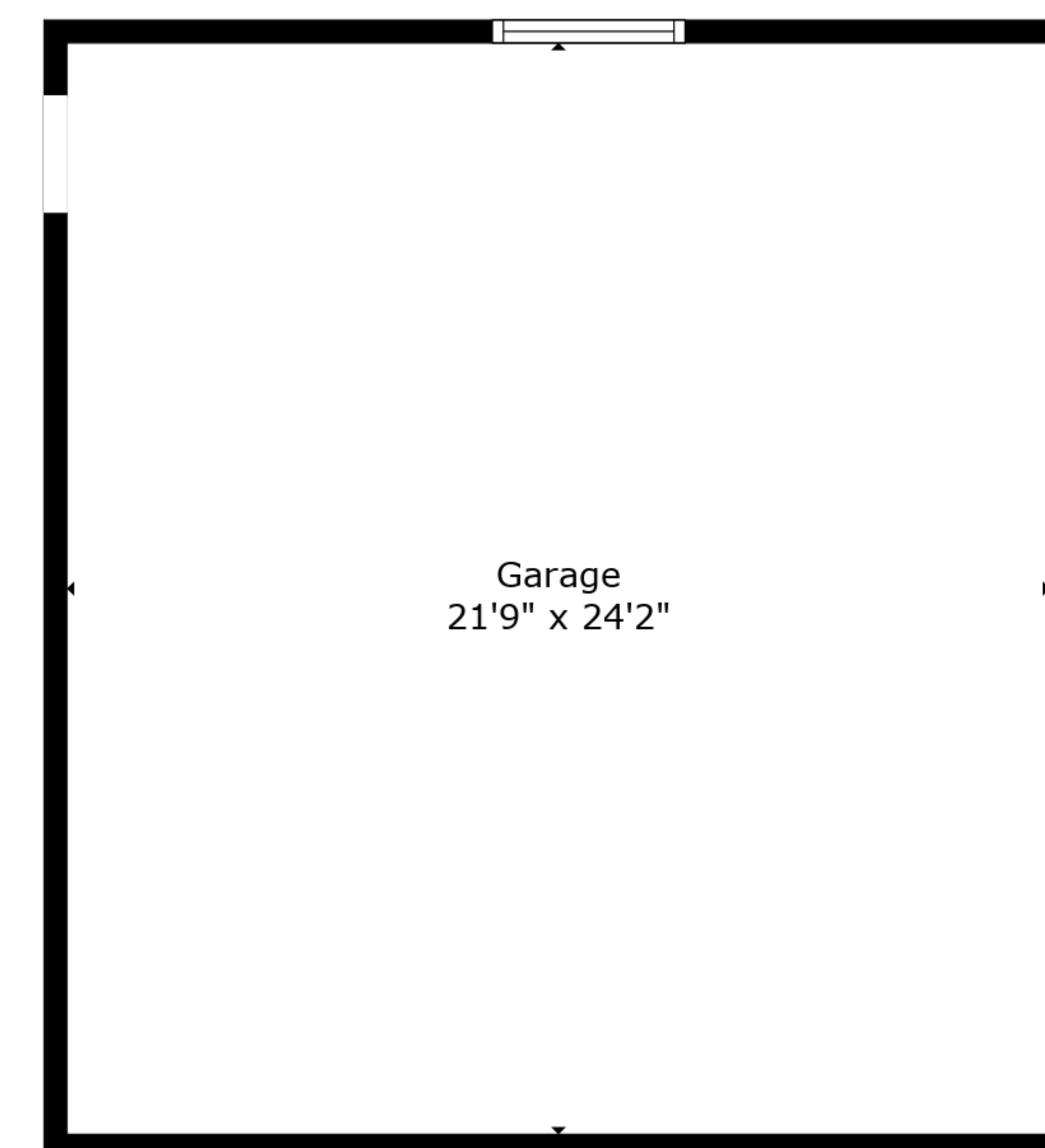
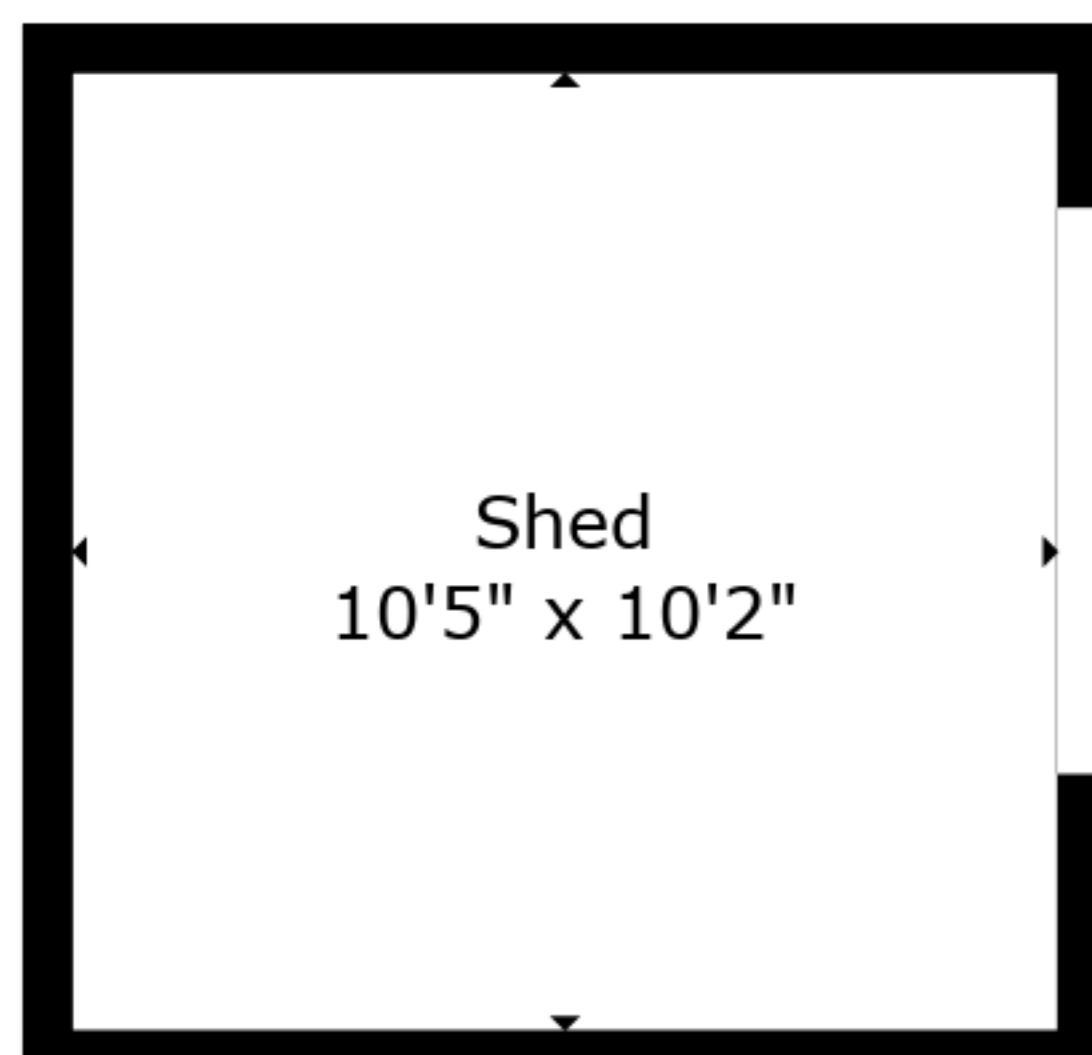
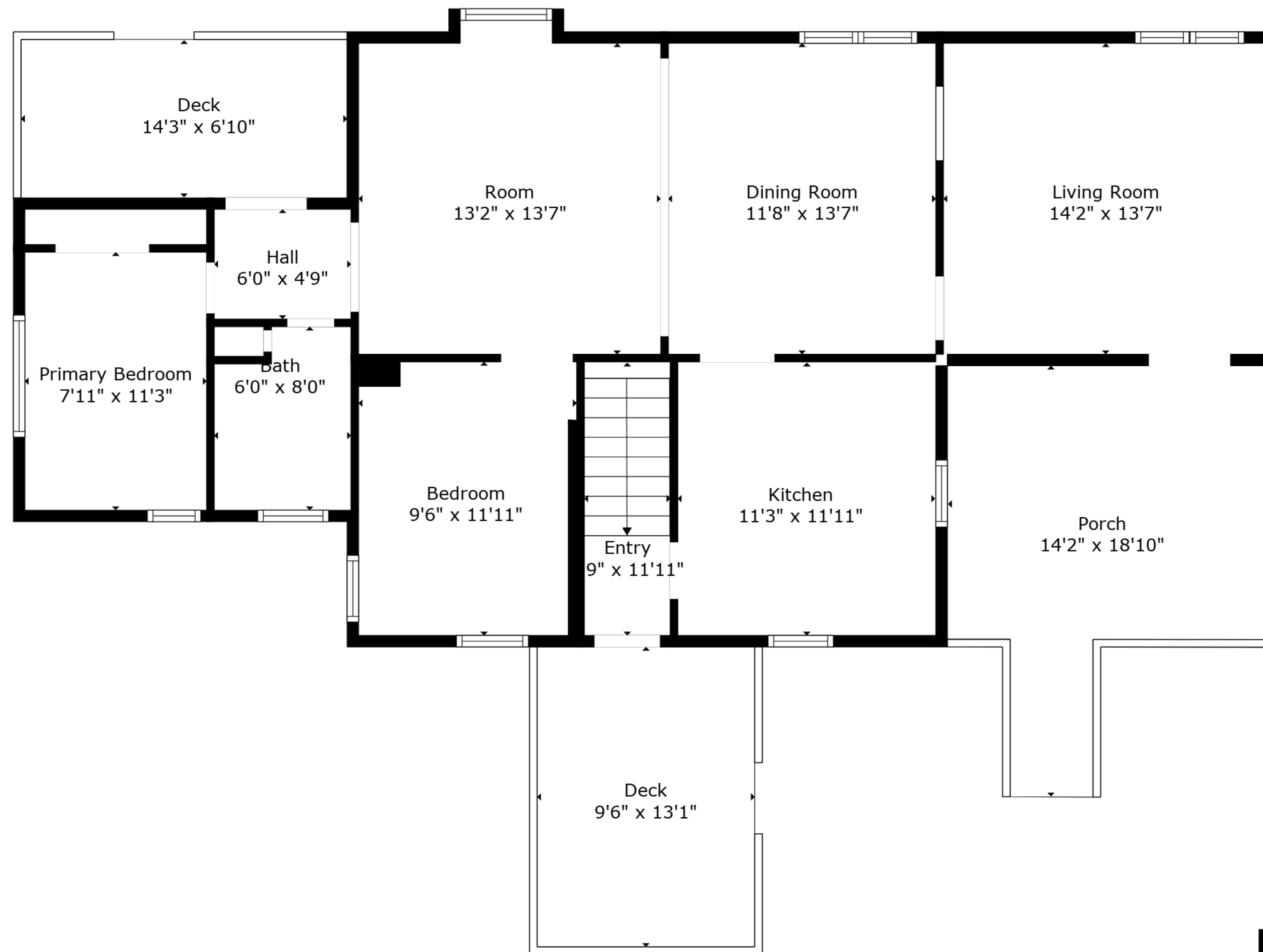


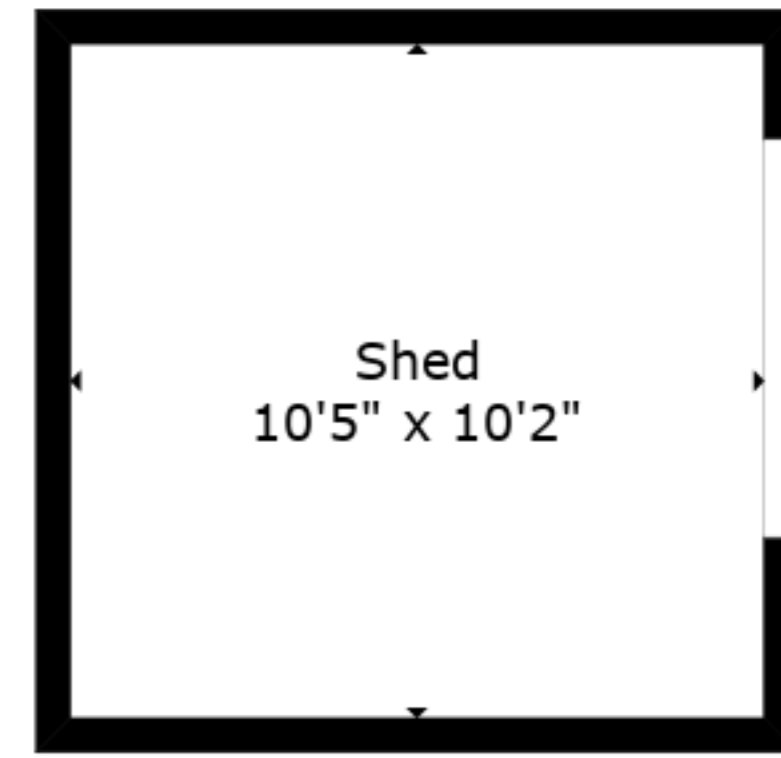
TOTAL: 1084 sq. ft

BELOW GROUND: 43 sq. ft, FLOOR 2: 1041 sq. ft
EXCLUDED AREAS: BASEMENT: 528 sq. ft, ROOM: 282 sq. ft, STORAGE: 175 sq. ft,
GARAGE: 525 sq. ft, SHED: 106 sq. ft, DECK: 223 sq. ft,
PORCH: 194 sq. ft, BAY WINDOW: 5 sq. ft

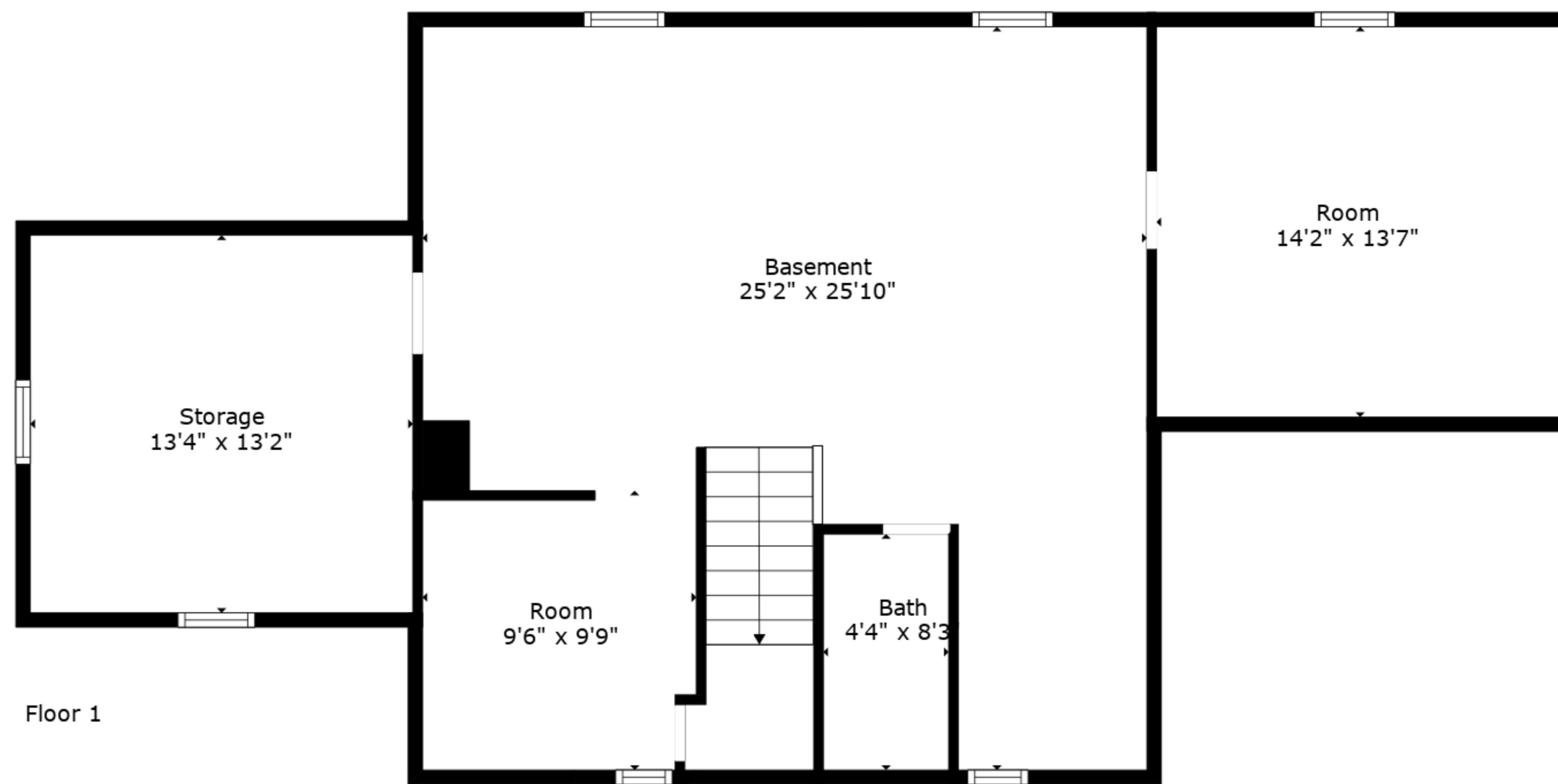
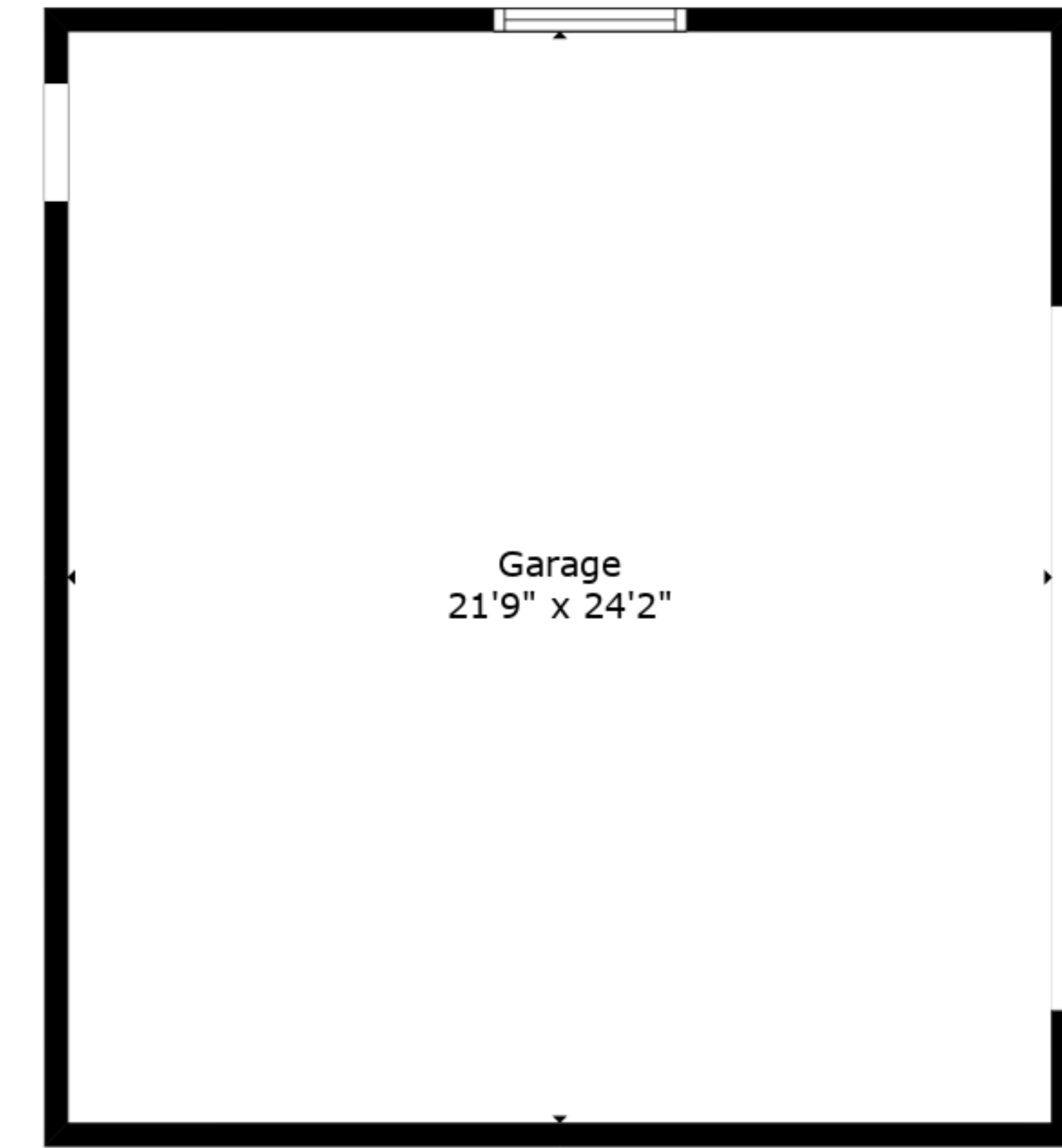
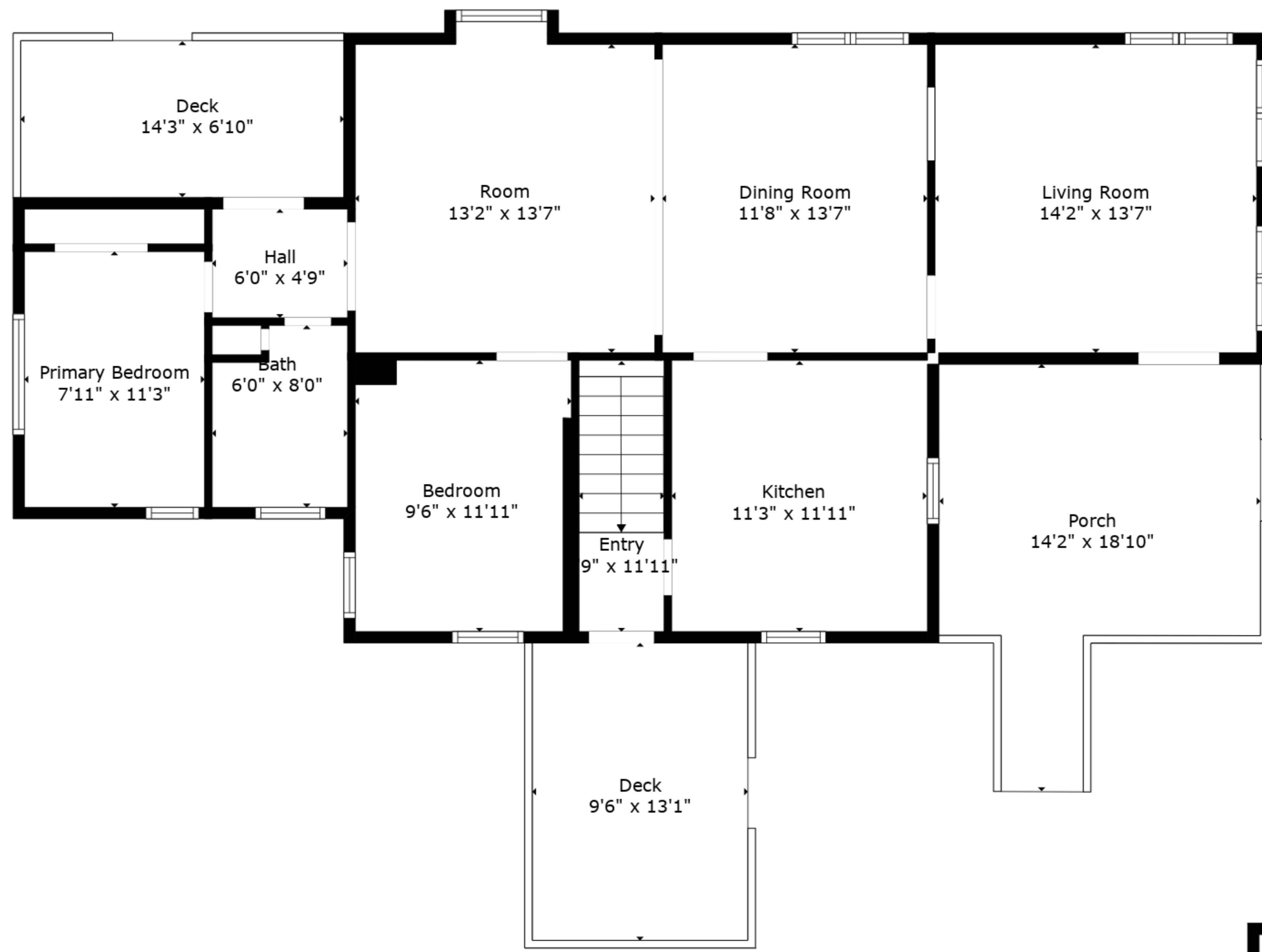


TOTAL: 1084 sq. ft

BELOW GROUND: 43 sq. ft, FLOOR 2: 1041 sq. ft
 EXCLUDED AREAS: BASEMENT: 528 sq. ft, ROOM: 282 sq. ft, STORAGE: 175 sq. ft,
 GARAGE: 525 sq. ft, SHED: 106 sq. ft, DECK: 223 sq. ft,
 PORCH: 194 sq. ft, BAY WINDOW: 5 sq. ft



Floor 2



Floor 1

TOTAL: 1084 sq. ft
 BELOW GROUND: 43 sq. ft, FLOOR 2: 1041 sq. ft
 EXCLUDED AREAS: BASEMENT: 528 sq. ft, ROOM: 282 sq. ft, STORAGE: 175 sq. ft,
 GARAGE: 525 sq. ft, SHED: 106 sq. ft, DECK: 223 sq. ft,
 PORCH: 194 sq. ft, BAY WINDOW: 5 sq. ft