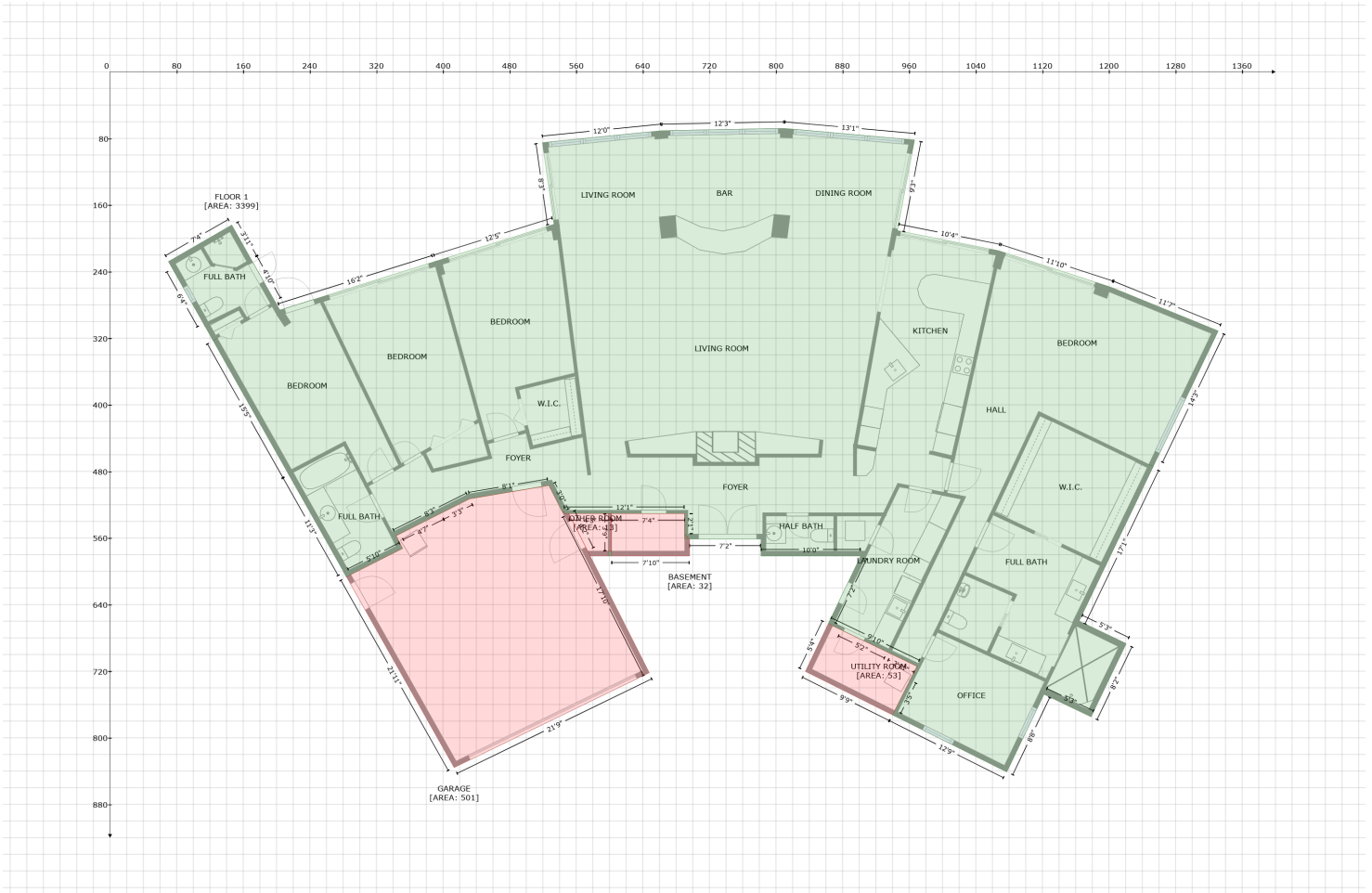


612 Snug Island, Clearwater, FL, United States

Gross Living Area: 3399 sq. ft



Space	Area (sq. ft)	Calculation <small>Coordinate Polygon Area Algorithm using inches</small>
FLOOR 1 (Living area)	3399	$ \begin{aligned} & -((809.7 + 966.4) * (68 - 81.9) + (966.4 + 945.7) * (81.9 - 190.7) + (945.7 + 945.7) * (190.7 - \\ & 190.8) + (945.7 + 1067.4) * (190.8 - 214.9) + (1067.4 + 1202.1) * (214.9 - 258.7) + (1202.1 + \\ & 1331.3) * (258.7 - 311.3) + (1331.3 + 1257.2) * (311.3 - 465.8) + (1257.2 + 1253.2) * (465.8 - \\ & 473.9) + (1253.2 + 1247.9) * (473.9 - 471.5) + (1247.9 + 1253.2) * (471.5 - 474) + (1253.2 + \\ & 1252.8) * (474 - 475) + (1252.8 + 1164.2) * (475 - 659.7) + (1164.2 + 1220.7) * (659.7 - 686.9) + \\ & (1220.7 + 1178.5) * (686.9 - 774.9) + (1178.5 + 1122) * (774.9 - 747.8) + (1122 + 1077.2) * \\ & (747.8 - 841.1) + (1077.2 + 939.9) * (841.1 - 772.5) + (939.9 + 942.6) * (772.5 - 767.6) + (942.6 + \\ & 942.6) * (767.6 - 767.4) + (942.6 + 961) * (767.4 - 730.7) + (961 + 969.3) * (730.7 - 714.1) + \\ & (969.3 + 969.2) * (714.1 - 714.1) + (969.2 + 862.8) * (714.1 - 663) + (862.8 + 864.4) * (663 - \\ & 659.4) + (864.4 + 901.8) * (659.4 - 581.6) + (901.8 + 782) * (581.6 - 581.6) + (782 + 782) * \\ & (581.6 - 561.2) + (782 + 696.2) * (561.2 - 561.2) + (696.2 + 690.2) * (561.2 - 555.2) + (690.2 + \\ & 690.2) * (555.2 - 530.6) + (690.2 + 545.5) * (530.6 - 530.6) + (545.5 + 545.5) * (530.6 - 528.2) + \\ & (545.5 + 543.6) * (528.2 - 529.3) + (543.6 + 527.2) * (529.3 - 496.9) + (527.2 + 432) * (496.9 - \\ & 513) + (432 + 343.8) * (513 - 557.3) + (343.8 + 351.4) * (557.3 - 572.6) + (351.4 + 289.1) * \\ & (572.6 - 604.2) + (289.1 + 284.1) * (604.2 - 606.8) + (284.1 + 283.6) * (606.8 - 606.7) + (283.6 + \\ & 280.9) * (606.7 - 601.3) + (280.9 + 281.1) * (601.3 - 601.6) + (281.1 + 214.8) * (601.6 - 484) + \\ & (214.8 + 123.8) * (484 - 322.9) + (123.8 + 128.8) * (322.9 - 319.9) + (128.8 + 123.8) * (319.9 - \\ & 322.8) + (123.8 + 121.8) * (322.8 - 319.4) + (121.8 + 114.6) * (319.4 - 306.7) + (114.6 + 114.1) * \\ & (306.7 - 306.3) + (114.1 + 112.4) * (306.3 - 302.7) + (112.4 + 112.2) * (302.7 - 302.7) + (112.2 + \\ & 75) * (302.7 - 236.5) + (75 + 70.2) * (236.5 - 227.9) + (70.2 + 146.1) * (227.9 - 184.1) + (146.1 + \\ & 169.3) * (184.1 - 224.9) + (169.3 + 197.9) * (224.9 - 275.6) + (197.9 + 200) * (275.6 - 279.2) + \\ & (200 + 204) * (279.2 - 286.1) + (204 + 203.9) * (286.1 - 286.2) + (203.9 + 389.2) * (286.2 - 228.3) \end{aligned} $

612 Snug Island, Clearwater, FL, United States

Gross Living Area: 3399 sq. ft

Space	Area (sq. ft)	Calculation <small>Coordinate Polygon Area Algorithm using inches</small>
		$+ (389.2 + 389.2) * (228.3 - 228.1) + (389.2 + 390.8) * (228.1 - 227.8) + (390.8 + 533.4) * (227.8 - 183.1) + (533.4 + 519.5) * (183.1 - 85.1) + (519.5 + 662.5) * (85.1 - 70.8) + (662.5 + 809.7) * (70.8 - 68) * 0.5 * 0.00694 + -((602.4 + 602.4) * (575.6 - 581.6) + (602.4 + 598.4) * (581.6 - 581.6) + (598.4 + 598.4) * (581.6 - 575.6) + (598.4 + 602.4) * (575.6 - 575.6)) * 0.5 * 0.00694 + -((690.2 + 694.2) * (555.2 - 559.3) + (694.2 + 694.2) * (559.3 - 561.2) + (694.2 + 690.2) * (561.2 - 561.2) + (690.2 + 690.2) * (561.2 - 555.2)) * 0.5 * 0.00694 + -((343.8 + 341.8) * (474 - 475.1) + (341.8 + 342.2) * (475.1 - 475) + (342.2 + 343.8) * (475 - 474)) * 0.5 * 0.00694 + -((443.3 + 446.8) * (407.7 - 420.4) + (446.8 + 446.9) * (420.4 - 420.7) + (446.9 + 443.3) * (420.7 - 407.7)) * 0.5 * 0.00694 + -((430.7 + 431.6) * (361.8 - 365.2) + (431.6 + 431.9) * (365.2 - 365.6) + (431.9 + 430.7) * (365.6 - 361.8)) * 0.5 * 0.00694 + -((403.6 + 394.2) * (230.2 - 232.9) + (394.2 + 394.6) * (232.9 - 232.9) + (394.6 + 403.6) * (232.9 - 230.2)) * 0.5 * 0.00694$
UTILITY ROOM (Non-living area)	53	$-((862.9 + 868.2) * (663 - 665.6) + (868.2 + 878) * (665.6 - 670.3) + (878 + 933.8) * (670.3 - 697.1) + (933.8 + 937.9) * (697.1 - 699.1) + (937.9 + 969.2) * (699.1 - 714.1) + (969.2 + 969.3) * (714.1 - 714.1) + (969.3 + 961) * (714.1 - 730.7) + (961 + 942.6) * (730.7 - 767.2) + (942.6 + 942.6) * (767.2 - 767.4) + (942.6 + 939.9) * (767.4 - 772.5) + (939.9 + 835.3) * (772.5 - 720.3) + (835.3 + 862.9) * (720.3 - 663)) * 0.5 * 0.00694$
GARAGE (Non-living area)	501	$-((527.2 + 543.6) * (496.9 - 529.3) + (543.6 + 545.5) * (529.3 - 528.2) + (545.5 + 545.5) * (528.2 - 530.6) + (545.5 + 550.9) * (530.6 - 530.6) + (550.9 + 647.8) * (530.6 - 721.9) + (647.8 + 413.4) * (721.9 - 835.8) + (413.4 + 284.1) * (835.8 - 606.8) + (284.1 + 289.1) * (606.8 - 604.2) + (289.1 + 351.4) * (604.2 - 572.6) + (351.4 + 343.8) * (572.6 - 557.3) + (343.8 + 348.1) * (557.3 - 555.2) + (348.1 + 396.9) * (555.2 - 530.6) + (396.9 + 432) * (530.6 - 513) + (432 + 527.2) * (513 - 496.9)) * 0.5 * 0.00694$
OTHER ROOM (Non-living area)	13	$-((602.4 + 602.4) * (530.6 - 575.6) + (602.4 + 598.4) * (575.6 - 575.6) + (598.4 + 598.4) * (575.6 - 581.6) + (598.4 + 576.9) * (581.6 - 581.6) + (576.9 + 573.8) * (581.6 - 575.8) + (573.8 + 573.8) * (575.8 - 575.6) + (573.8 + 550.9) * (575.6 - 530.6) + (550.9 + 602.4) * (530.6 - 530.6)) * 0.5 * 0.00694$
BASEMENT (Non-living area)	32	$-((690.2 + 690.2) * (530.6 - 555.2) + (690.2 + 696.2) * (555.2 - 561.2) + (696.2 + 696.2) * (561.2 - 581.6) + (696.2 + 602.4) * (581.6 - 581.6) + (602.4 + 602.4) * (581.6 - 530.6) + (602.4 + 690.2) * (530.6 - 530.6)) * 0.5 * 0.00694 + -((690.2 + 690.2) * (555.2 - 561.2) + (690.2 + 694.2) * (561.2 - 561.2) + (694.2 + 694.2) * (561.2 - 559.3) + (694.2 + 690.2) * (559.3 - 555.2)) * 0.5 * 0.00694$