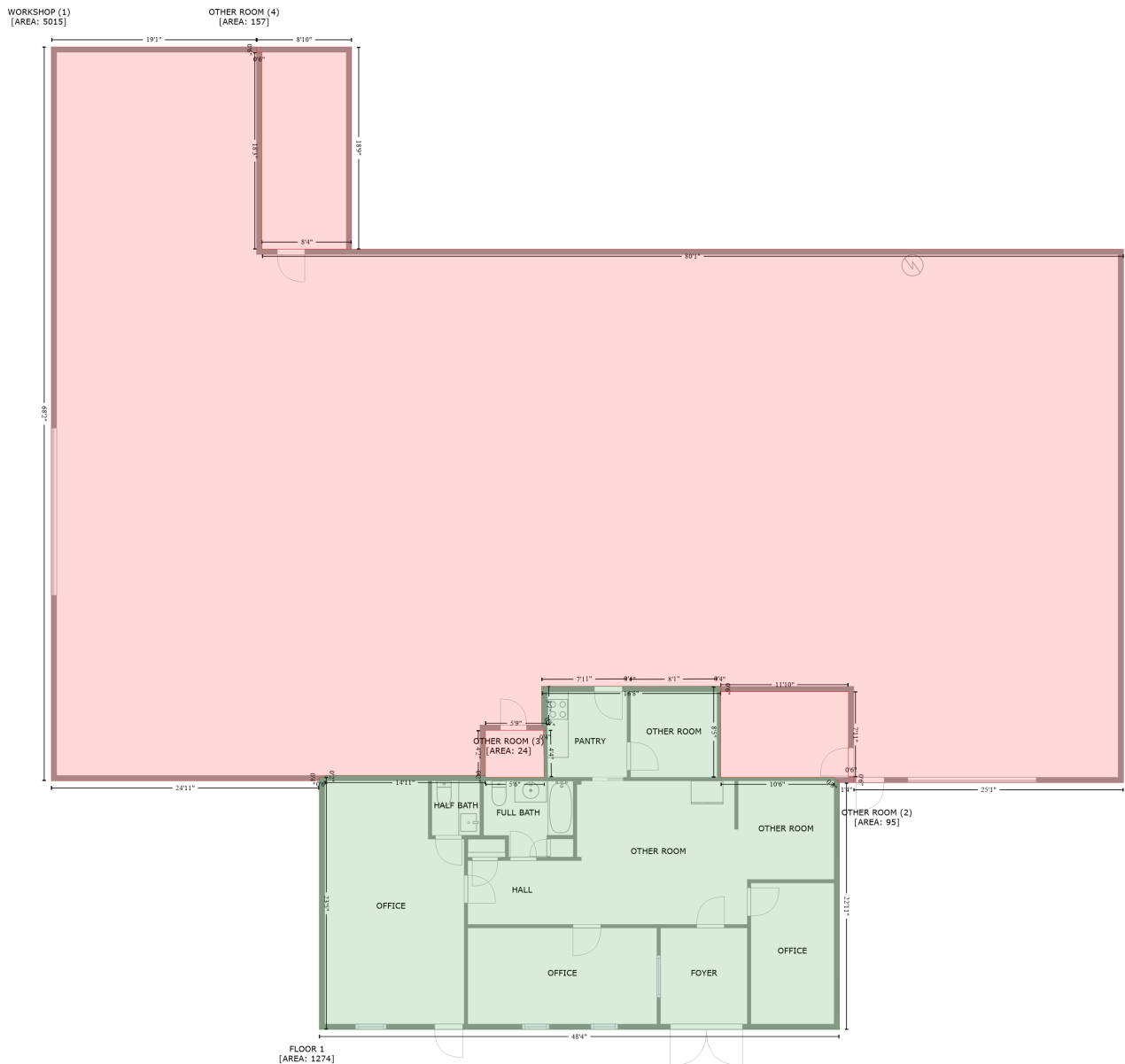


700 Cason Street, North Belmont, Belmont, Gaston County, North Carolina, United States, 28012

Gross Living Area: 1274 sq. ft



Space

Area (sq. ft)

Calculation Coordinate Polygon Area Algorithm using inches

FLOOR 1
(Living area)

1274

$$\begin{aligned}
 & -((620.4 + 614.4) * (754.5 - 748.5) + (614.4 + 614.4) * (748.5 - 705.5) + (614.4 + 814) * (705.5 - \\
 & 705.5) + (814 + 814) * (705.5 - 806.8) + (814 + 940.4) * (806.8 - 806.8) + (940.4 + 946.4) * \\
 & (806.8 - 812.8) + (946.4 + 946.4) * (812.8 - 1088) + (946.4 + 366.4) * (1088 - 1088) + (366.4 + \\
 & 366.4) * (1088 - 806.8) + (366.4 + 372.4) * (806.8 - 806.8) + (372.4 + 372.4) * (806.8 - 804.8) + \\
 & (372.4 + 551.6) * (804.8 - 804.8) + (551.6 + 551.6) * (804.8 - 806.8) + (551.6 + 617.3) * (806.8 - \\
 & 806.8) + (617.3 + 616.4) * (806.8 - 754.5) + (616.4 + 620.4) * (754.5 - 754.5)) * 0.5 * 0.00694
 \end{aligned}$$

700 Cason Street, North Belmont, Belmont, Gaston County, North Carolina, United States, 28012

Gross Living Area: 1274 sq. ft

Space	Area (sq. ft)	Calculation <small>Coordinate Polygon Area Algorithm using inches</small>
WORKSHOP (Non-living area)	5015	$ \begin{aligned} & -((296.4 + 296.4) * (-7.3 - -1.3) + (296.4 + 302.4) * (-1.3 - -1.3) + (302.4 + 302.4) * (-1.3 - 218.1) + \\ & (302.4 + 1263.1) * (218.1 - 218.1) + (1263.1 + 1263.1) * (218.1 - 812.8) + (1263.1 + 962.4) * \\ & (812.8 - 812.8) + (962.4 + 962.4) * (812.8 - 806.8) + (962.4 + 956.4) * (806.8 - 806.8) + (956.4 + \\ & 956.4) * (806.8 - 711.5) + (956.4 + 814) * (711.5 - 711.5) + (814 + 814) * (711.5 - 705.5) + (814 + \\ & 810) * (705.5 - 705) + (810 + 713.5) * (705 - 705.5) + (713.5 + 709.5) * (705.5 - 705) + (709.5 + \\ & 614.4) * (705 - 705.5) + (614.4 + 614.4) * (705.5 - 748.5) + (614.4 + 620.4) * (748.5 - 754.5) + \\ & (620.4 + 551.6) * (754.5 - 754.5) + (551.6 + 551.6) * (754.5 - 804.8) + (551.6 + 372.4) * (804.8 - \\ & 804.8) + (372.4 + 372.4) * (804.8 - 806.8) + (372.4 + 366.4) * (806.8 - 806.8) + (366.4 + 366.4) * \\ & (806.8 - 810.8) + (366.4 + 67.6) * (810.8 - 810.8) + (67.6 + 67.6) * (810.8 - -7.3) + (67.6 + 296.4) * \\ & (-7.3 - -7.3)) * 0.5 * 0.00694 \end{aligned} $
OTHER ROOM (Non-living area)	95	$ \begin{aligned} & -((956.4 + 956.4) * (711.5 - 806.8) + (956.4 + 962.4) * (806.8 - 806.8) + (962.4 + 962.4) * (806.8 - \\ & 812.8) + (962.4 + 946.4) * (812.8 - 812.8) + (946.4 + 940.4) * (812.8 - 806.8) + (940.4 + 814) * \\ & (806.8 - 806.8) + (814 + 814) * (806.8 - 711.5) + (814 + 956.4) * (711.5 - 711.5)) * 0.5 * 0.00694 \end{aligned} $
OTHER ROOM (Non-living area)	24	$ \begin{aligned} & -((551.6 + 616.4) * (754.5 - 754.5) + (616.4 + 617.3) * (754.5 - 806.8) + (617.3 + 551.6) * (806.8 - \\ & 806.8) + (551.6 + 551.6) * (806.8 - 754.5)) * 0.5 * 0.00694 \end{aligned} $
OTHER ROOM (Non-living area)	157	$ \begin{aligned} & -((402.5 + 402.5) * (-7.3 - 218.1) + (402.5 + 302.4) * (218.1 - 218.1) + (302.4 + 302.4) * (218.1 - \\ & -1.3) + (302.4 + 296.4) * (-1.3 - -1.3) + (296.4 + 296.4) * (-1.3 - -7.3) + (296.4 + 402.5) * (-7.3 - \\ & -7.3)) * 0.5 * 0.00694 \end{aligned} $