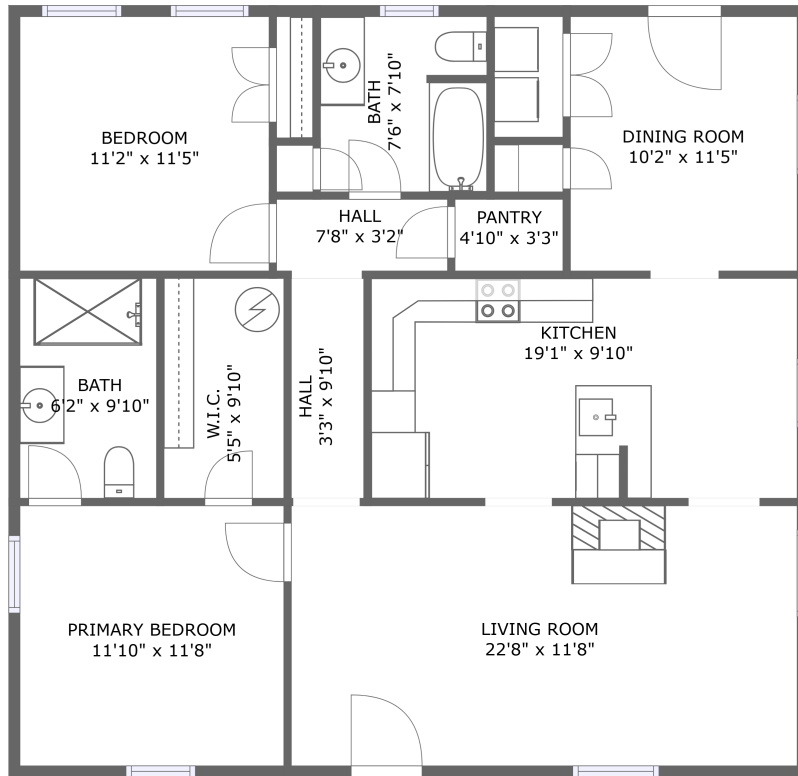


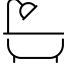



# 1307 Beirne Avenue Northeast, Lincoln Mill, Huntsville, Madison County, Alabama, United



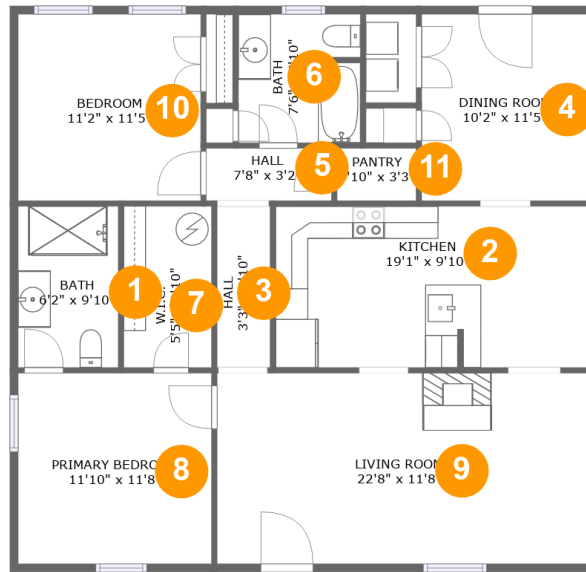
FLOOR 1

## Property Summary

 **0** garages     **2** bedrooms     **2** bathrooms     **0** half baths

 **1** floors     **1,242** Gross Living Area sqft     **1,242** total sqft

**1307 Beirne Avenue Northeast, Lincoln Mill, Huntsville, Madison County, Alabama, United**



**Room Dimensions**

Floor 1

Total sqft: 1242

Living area: 1242

#	Room name	Dimensions	Area (sqft)	Counted as Living Area
1	Bath	6'2" x 9'10"	60 sq. ft	Yes
2	Kitchen	19'1" x 9'10"	188 sq. ft	Yes
3	Hall	3'3" x 9'10"	32 sq. ft	Yes
4	Dining Room	10'2" x 11'5"	116 sq. ft	Yes
5	Hall	7'8" x 3'2"	25 sq. ft	Yes
6	Bath	7'6" x 7'10"	58 sq. ft	Yes
7	W.i.c.	5'5" x 9'10"	53 sq. ft	Yes
8	Primary Bedroom	11'10" x 11'8"	138 sq. ft	Yes
9	Living Room	22'8" x 11'8"	265 sq. ft	Yes
10	Bedroom	11'2" x 11'5"	128 sq. ft	Yes
11	Pantry	4'10" x 3'3"	16 sq. ft	Yes

Scan captured on Tue, 04 Jun 2024 14:24:46 GMT

Information is calculated by CubiCasa technology; deemed highly reliable but not guaranteed.

# 1307 Beirne Avenue Northeast, Lincoln Mill, Huntsville, Madison County, Alabama, United

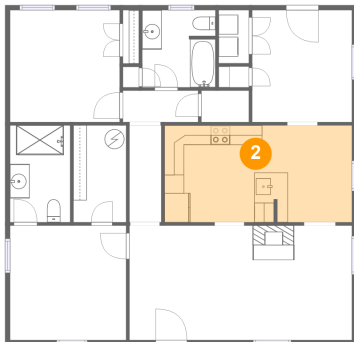
## 1 Floor 1 - Bath



Dimensions: 6'2" x 9'10"  
Area: 60 sq. ft  
Counted as Living Area:  
Yes

Heated: Yes  
Finished: Yes  
Enclosed: Yes  
Contiguous:  
Yes  
Permitted: Yes  
Wet Space: Yes  
Addition: No  
Conversion: No

## 2 Floor 1 - Kitchen

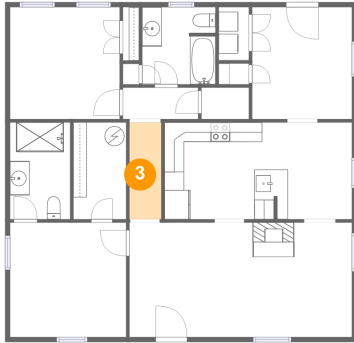


Dimensions: 19'1" x 9'10"  
Area: 188 sq. ft  
Counted as Living Area:  
Yes

Heated: Yes  
Finished: Yes  
Enclosed: Yes  
Contiguous:  
Yes  
Permitted: Yes  
Wet Space: No  
Addition: No  
Conversion: No

# 1307 Beirne Avenue Northeast, Lincoln Mill, Huntsville, Madison County, Alabama, United

## 3 Floor 1 - Hall



Dimensions: 3'3" x 9'10"  
Area: 32 sq. ft  
Counted as Living Area:  
Yes

Heated: Yes  
Finished: Yes  
Enclosed: Yes  
Contiguous:  
Yes  
Permitted: Yes  
Wet Space: No  
Addition: No  
Conversion: No

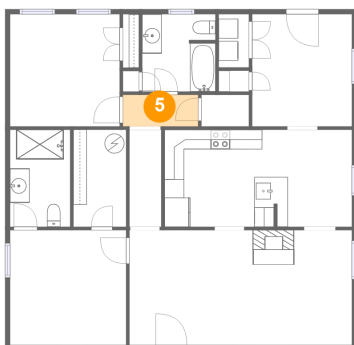
## 4 Floor 1 - Dining Room



Dimensions: 10'2" x 11'5"  
Area: 116 sq. ft  
Counted as Living Area:  
Yes

Heated: Yes  
Finished: Yes  
Enclosed: Yes  
Contiguous:  
Yes  
Permitted: Yes  
Wet Space: No  
Addition: No  
Conversion: No

## 5 Floor 1 - Hall

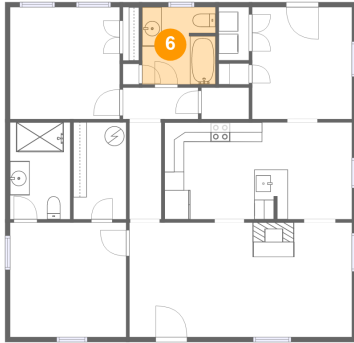


Dimensions: 7'8" x 3'2"  
Area: 25 sq. ft  
Counted as Living Area:  
Yes

Heated: Yes  
Finished: Yes  
Enclosed: Yes  
Contiguous:  
Yes  
Permitted: Yes  
Wet Space: No  
Addition: No  
Conversion: No

# 1307 Beirne Avenue Northeast, Lincoln Mill, Huntsville, Madison County, Alabama, United

## 6 Floor 1 - Bath



Dimensions: 7'6" x 7'10"  
Area: 58 sq. ft  
Counted as Living Area:  
Yes

Heated: Yes  
Finished: Yes  
Enclosed: Yes  
Contiguous:  
Yes  
Permitted: Yes  
Wet Space: Yes  
Addition: No  
Conversion: No

## 7 Floor 1 - W.i.c.



Dimensions: 5'5" x 9'10"  
Area: 53 sq. ft  
Counted as Living Area:  
Yes

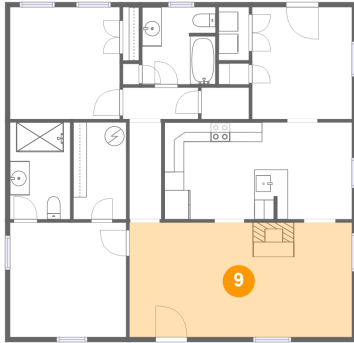
Heated: Yes  
Finished: Yes  
Enclosed: Yes  
Contiguous:  
Yes  
Permitted: Yes  
Wet Space: No  
Addition: No  
Conversion: No

## 8 Floor 1 - Primary Bedroom



Dimensions: 11'10" x 11'8"  
Area: 138 sq. ft  
Counted as Living Area:  
Yes

Heated: Yes  
Finished: Yes  
Enclosed: Yes  
Contiguous:  
Yes  
Permitted: Yes  
Wet Space: No  
Addition: No  
Conversion: No

**1307 Beirne Avenue Northeast, Lincoln Mill,  
Huntsville, Madison County, Alabama, United****9 Floor 1 - Living Room**

Dimensions: 22'8" x 11'8"  
Area: 265 sq. ft  
Counted as Living Area:  
Yes

Heated: Yes  
Finished: Yes  
Enclosed: Yes  
Contiguous:  
Yes  
Permitted: Yes  
Wet Space: No  
Addition: No  
Conversion: No

**10 Floor 1 - Bedroom**

Dimensions: 11'2" x 11'5"  
Area: 128 sq. ft  
Counted as Living Area:  
Yes

Heated: Yes  
Finished: Yes  
Enclosed: Yes  
Contiguous:  
Yes  
Permitted: Yes  
Wet Space: No  
Addition: No  
Conversion: No

**11 Floor 1 - Pantry**

Dimensions: 4'10" x 3'3"  
Area: 16 sq. ft  
Counted as Living Area:  
Yes

Heated: Yes  
Finished: Yes  
Enclosed: Yes  
Contiguous:  
Yes  
Permitted: Yes  
Wet Space: No  
Addition: No  
Conversion: No