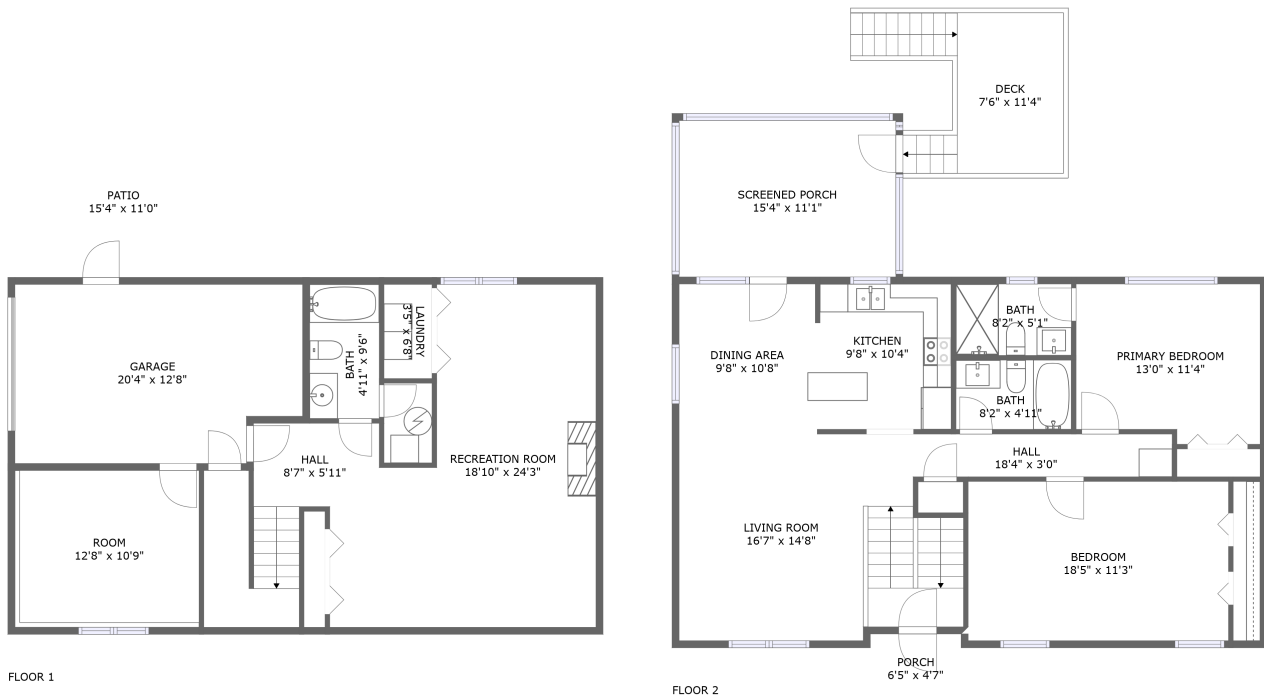

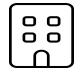




**208 Kimball Avenue, Riverlee, Salem, Salem city,  
Virginia, United States, 24153**

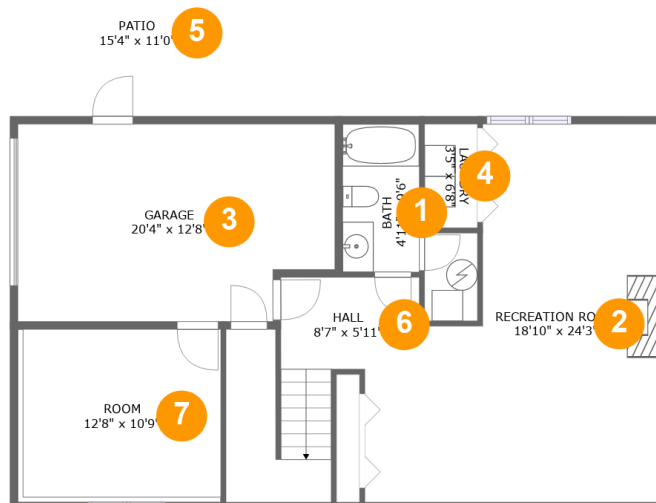


**Property summary**

 **1** Garages     
  **2** Bedrooms     
  **3** Bathrooms     
  **0** Half baths

 **2** Floors     
  **1,740** Gross living area sqft     
  **2,673** Total sqft

208 Kimball Avenue, Riverlee, Salem, Salem city,  
Virginia, United States, 24153



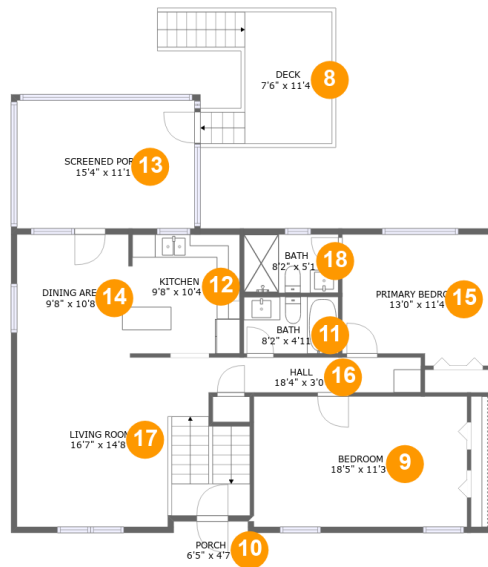
## Room dimensions

Floor 1

Total sqft: 1236 Living area: 640

#		Dimensions	sqft	Counted as living area
1	Bath	4'11" x 9'6"	47 sq. ft	Yes
2	Recreation Room	18'10" x 24'3"	355 sq. ft	Yes
3	Garage	20'4" x 12'8"	245 sq. ft	No
4	Laundry	3'5" x 6'8"	23 sq. ft	Yes
5	Patio	15'4" x 11'0"	170 sq. ft	No
6	Hall	8'7" x 5'11"	114 sq. ft	Yes
7	Room	12'8" x 10'9"	145 sq. ft	No

208 Kimball Avenue, Riverlee, Salem, Salem city,  
Virginia, United States, 24153



## Room dimensions

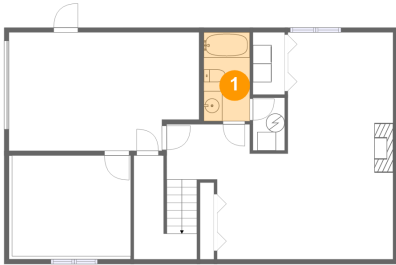
Floor 2

Total sqft: 1437 Living area: 1100

#		Dimensions	sqft	Counted as living area
8	Deck	7'6" x 11'4"	119 sq. ft	No
9	Bedroom	18'5" x 11'3"	208 sq. ft	Yes
10	Porch	6'5" x 4'7"	29 sq. ft	No
11	Bath	8'2" x 4'11"	40 sq. ft	Yes
12	Kitchen	9'8" x 10'4"	98 sq. ft	Yes
13	Screened Porch	15'4" x 11'1"	170 sq. ft	No
14	Dining Area	9'8" x 10'8"	102 sq. ft	Yes
15	Primary Bedroom	13'0" x 11'4"	140 sq. ft	Yes
16	Hall	18'4" x 3'0"	56 sq. ft	Yes
17	Living Room	16'7" x 14'8"	267 sq. ft	Yes
18	Bath	8'2" x 5'1"	41 sq. ft	Yes

208 Kimball Avenue, Riverlee, Salem, Salem city,  
Virginia, United States, 24153

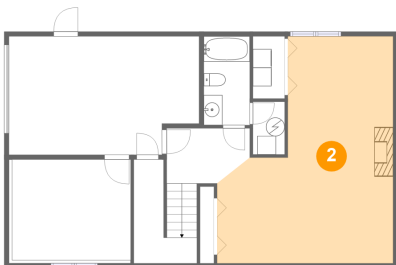
## 1 Floor 1 - Bath



Dimensions: 4'11" x 9'6"  
Area: 47 sq. ft  
Counted as living area: Yes

Heated: Yes  
Finished: Yes  
Enclosed: Yes  
Contiguous: Yes  
Permitted: Yes  
Wet space: Yes  
Addition: No  
Conversion: No

## 2 Floor 1 - Recreation Room

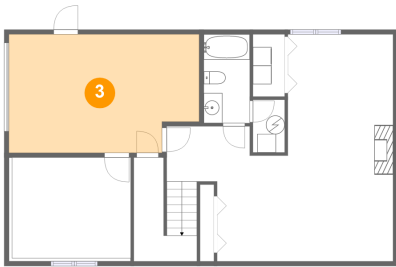


Dimensions: 18'10" x 24'3"  
Area: 355 sq. ft  
Counted as living area: Yes

Heated: Yes  
Finished: Yes  
Enclosed: Yes  
Contiguous: Yes  
Permitted: Yes  
Wet space: No  
Addition: No  
Conversion: No

208 Kimball Avenue, Riverlee, Salem, Salem city,  
Virginia, United States, 24153

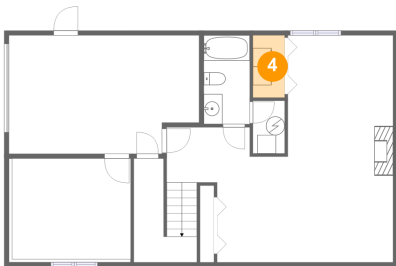
### 3 Floor 1 - Garage



Dimensions: 20'4" x 12'8"  
Area: 245 sq. ft  
Counted as living area: No

Heated: No  
Finished: No  
Enclosed: Yes  
Contiguous: Yes  
Permitted: Yes  
Wet space: No  
Addition: No  
Conversion: No

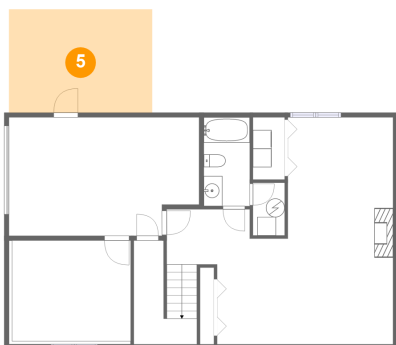
### 4 Floor 1 - Laundry



Dimensions: 3'5" x 6'8"  
Area: 23 sq. ft  
Counted as living area: Yes

Heated: Yes  
Finished: Yes  
Enclosed: Yes  
Contiguous: Yes  
Permitted: Yes  
Wet space: No  
Addition: No  
Conversion: No

### 5 Floor 1 - Patio

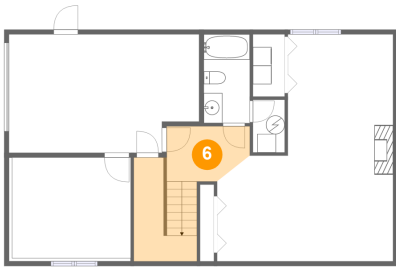


Dimensions: 15'4" x 11'0"  
Area: 170 sq. ft  
Counted as living area: No

Heated: No  
Finished: Yes  
Enclosed: No  
Contiguous: Yes  
Permitted: Yes  
Wet space: No  
Addition: No  
Conversion: No

208 Kimball Avenue, Riverlee, Salem, Salem city,  
Virginia, United States, 24153

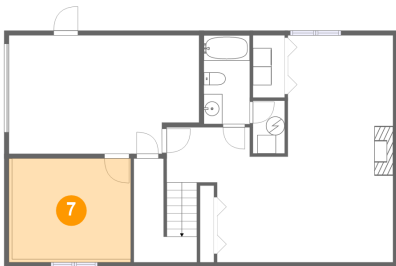
## 6 Floor 1 - Hall



Dimensions: 8'7" x 5'11"  
Area: 114 sq. ft  
Counted as living area: Yes

Heated: Yes  
Finished: Yes  
Enclosed: Yes  
Contiguous: Yes  
Permitted: Yes  
Wet space: No  
Addition: No  
Conversion: No

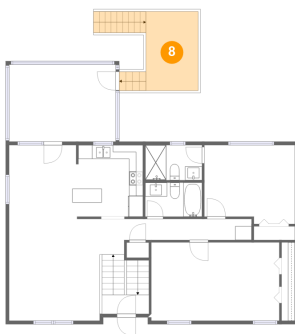
## 7 Floor 1 - Room



Dimensions: 12'8" x 10'9"  
Area: 145 sq. ft  
Counted as living area: No

Heated: Yes  
Finished: Yes  
Enclosed: Yes  
Contiguous: No  
Permitted: Yes  
Wet space: No  
Addition: No  
Conversion: No

## 8 Floor 2 - Deck

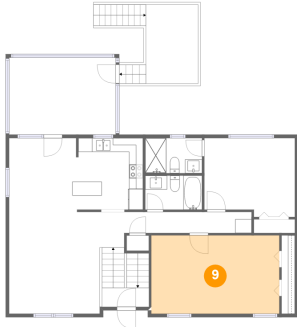


Dimensions: 7'6" x 11'4"  
Area: 119 sq. ft  
Counted as living area: No

Heated: No  
Finished: Yes  
Enclosed: No  
Contiguous: Yes  
Permitted: Yes  
Wet space: No  
Addition: No  
Conversion: No

208 Kimball Avenue, Riverlee, Salem, Salem city,  
Virginia, United States, 24153

**9** Floor 2 - Bedroom



Dimensions: 18'5" x 11'3"  
Area: 208 sq. ft  
Counted as living area: Yes

Heated: Yes  
Finished: Yes  
Enclosed: Yes  
Contiguous: Yes  
Permitted: Yes  
Wet space: No  
Addition: No  
Conversion: No

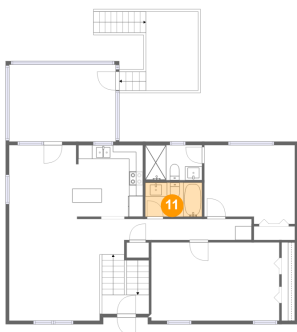
**10** Floor 2 - Porch



Dimensions: 6'5" x 4'7"  
Area: 29 sq. ft  
Counted as living area: No

Heated: No  
Finished: Yes  
Enclosed: No  
Contiguous: Yes  
Permitted: Yes  
Wet space: No  
Addition: No  
Conversion: No

**11** Floor 2 - Bath

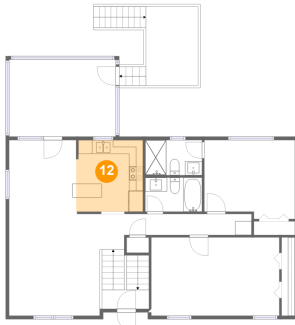


Dimensions: 8'2" x 4'11"  
Area: 40 sq. ft  
Counted as living area: Yes

Heated: Yes  
Finished: Yes  
Enclosed: Yes  
Contiguous: Yes  
Permitted: Yes  
Wet space: Yes  
Addition: No  
Conversion: No

208 Kimball Avenue, Riverlee, Salem, Salem city,  
Virginia, United States, 24153

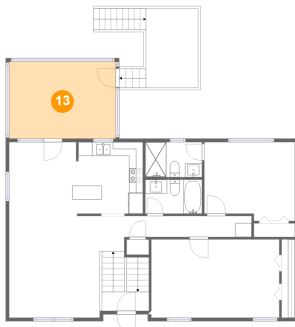
## 12 Floor 2 - Kitchen



Dimensions: 9'8" x 10'4"  
Area: 98 sq. ft  
Counted as living area: Yes

Heated: Yes  
Finished: Yes  
Enclosed: Yes  
Contiguous: Yes  
Permitted: Yes  
Wet space: No  
Addition: No  
Conversion: No

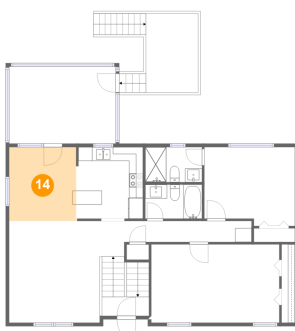
## 13 Floor 2 - Screened Porch



Dimensions: 15'4" x 11'1"  
Area: 170 sq. ft  
Counted as living area: No

Heated: No  
Finished: Yes  
Enclosed: No  
Contiguous: Yes  
Permitted: Yes  
Wet space: No  
Addition: No  
Conversion: No

## 14 Floor 2 - Dining Area



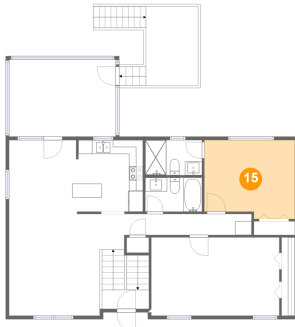
Dimensions: 9'8" x 10'8"  
Area: 102 sq. ft  
Counted as living area: Yes

Heated: Yes  
Finished: Yes  
Enclosed: Yes  
Contiguous: Yes  
Permitted: Yes  
Wet space: No  
Addition: No  
Conversion: No



208 Kimball Avenue, Riverlee, Salem, Salem city,  
Virginia, United States, 24153

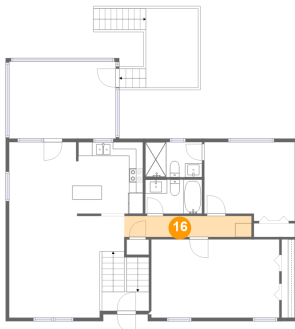
### 15 Floor 2 - Primary Bedroom



Dimensions: 13'0" x 11'4"  
Area: 140 sq. ft  
Counted as living area: Yes

Heated: Yes  
Finished: Yes  
Enclosed: Yes  
Contiguous: Yes  
Permitted: Yes  
Wet space: No  
Addition: No  
Conversion: No

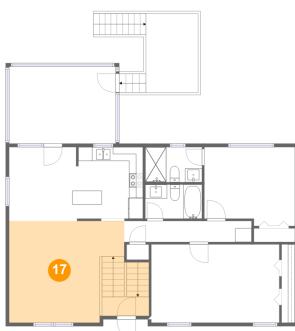
### 16 Floor 2 - Hall



Dimensions: 18'4" x 3'0"  
Area: 56 sq. ft  
Counted as living area: Yes

Heated: Yes  
Finished: Yes  
Enclosed: Yes  
Contiguous: Yes  
Permitted: Yes  
Wet space: No  
Addition: No  
Conversion: No

### 17 Floor 2 - Living Room

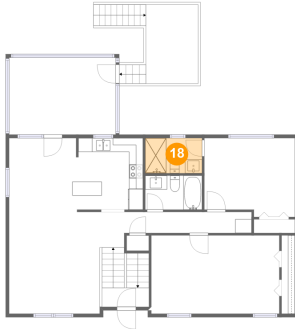


Dimensions: 16'7" x 14'8"  
Area: 267 sq. ft  
Counted as living area: Yes

Heated: Yes  
Finished: Yes  
Enclosed: Yes  
Contiguous: Yes  
Permitted: Yes  
Wet space: No  
Addition: No  
Conversion: No

**208 Kimball Avenue, Riverlee, Salem, Salem city,  
Virginia, United States, 24153**

**18 Floor 2 - Bath**



**Dimensions: 8'2" x 5'1"**  
**Area: 41 sq. ft**  
**Counted as living area: Yes**

**Heated: Yes**  
**Finished: Yes**  
**Enclosed: Yes**  
**Contiguous: Yes**  
**Permitted: Yes**  
**Wet space: Yes**  
**Addition: No**  
**Conversion: No**