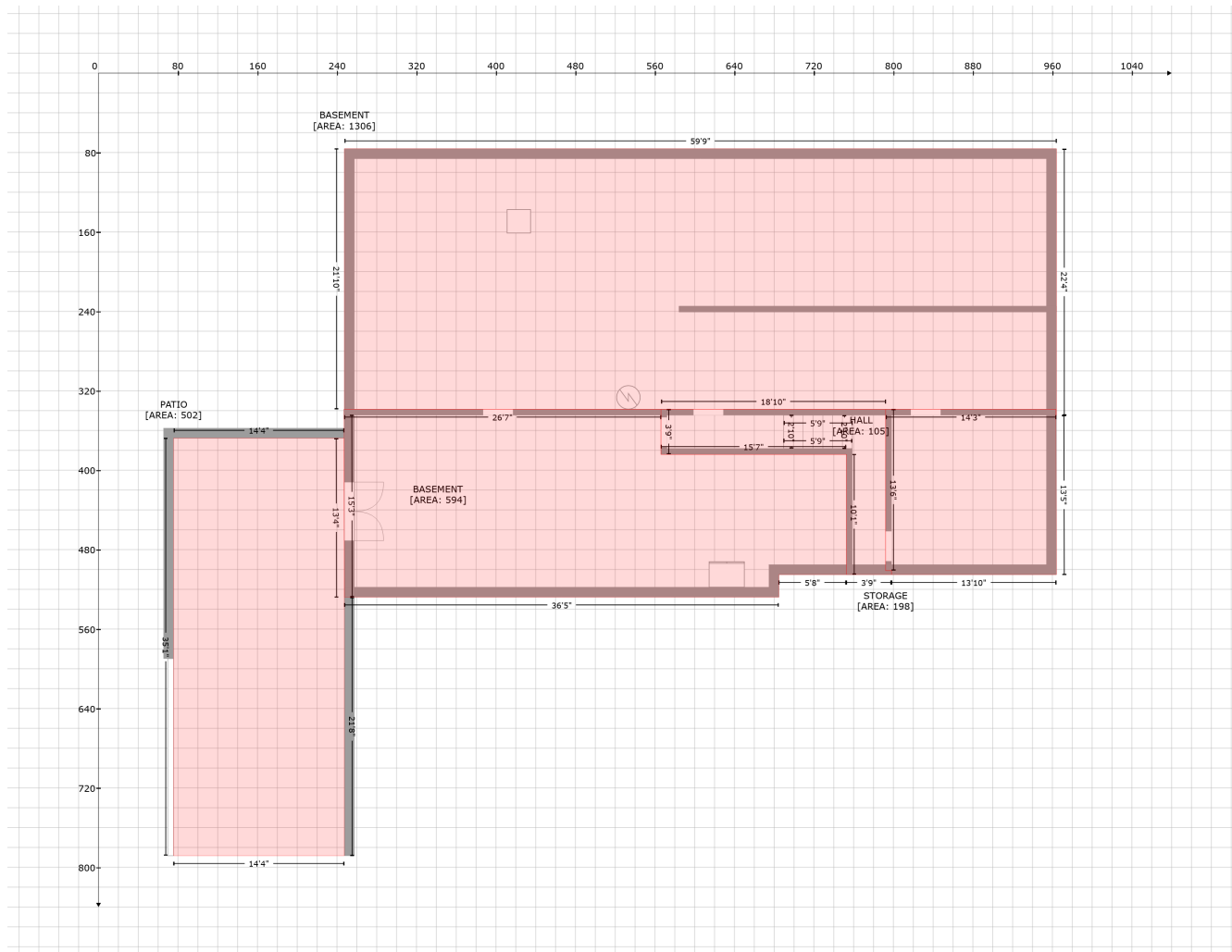


# Lake Vista Drive 2075, Forest, Virginia, United States

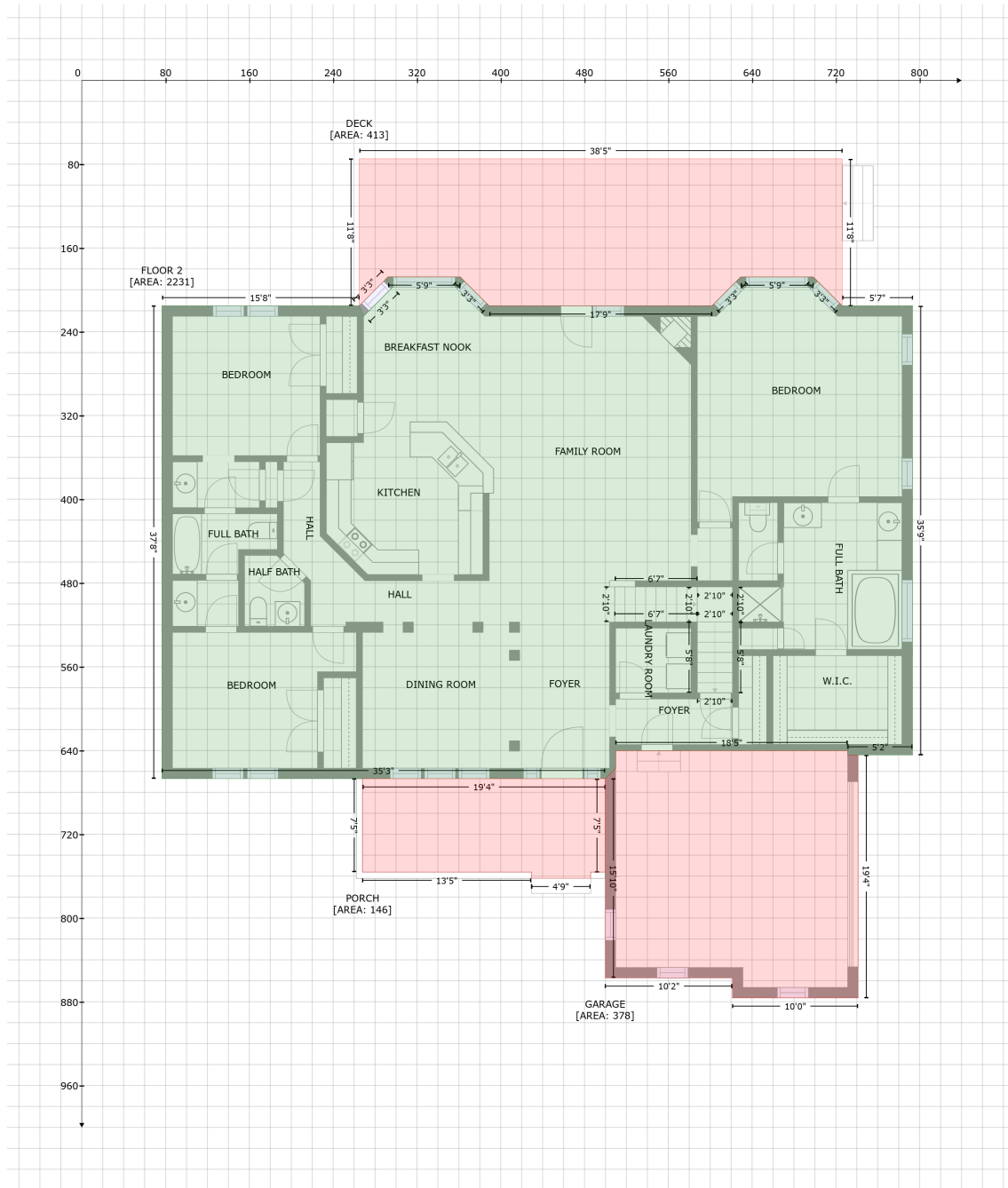
Gross Living Area: 2685 sq. ft



Space	Area (sq. ft)	Calculation
STORAGE (Non-living area)	198	$-\left((963.7 + 963.7) * (338.7 - 344.6) + (963.7 + 964.1) * (344.6 - 505.2) + (964.1 + 798.1) * (505.2 - 505.2) + (798.1 + 798.1) * (505.2 - 501.1) + (798.1 + 792.2) * (501.1 - 501.1) + (792.2 + 792.2) * (501.1 - 338.7) + (792.2 + 963.7) * (338.7 - 338.7)\right) * 0.5 * 0.00694$
HALL (Non-living area)	105	$-\left((792.2 + 792.2) * (338.7 - 501.1) + (792.2 + 798.1) * (501.1 - 501.1) + (798.1 + 798.1) * (501.1 - 505.2) + (798.1 + 752.7) * (505.2 - 505.2) + (752.7 + 752.7) * (505.2 - 384.1) + (752.7 + 566.1) * (384.1 - 384.1) + (566.1 + 566.1) * (384.1 - 338.7) + (566.1 + 792.2) * (338.7 - 338.7)\right) * 0.5 * 0.00694$
BASEMENT (Non-living area)	594	$-\left((566.1 + 566.1) * (338.7 - 384.1) + (566.1 + 752.7) * (384.1 - 384.1) + (752.7 + 752.7) * (384.1 - 505.2) + (752.7 + 684.8) * (505.2 - 505.2) + (684.8 + 684.8) * (505.2 - 527.9) + (684.8 + 247.5) * (527.9 - 527.9) + (247.5 + 247) * (527.9 - 344.6) + (247 + 247) * (344.6 - 338.7) + (247 + 566.1) * (338.7 - 338.7)\right) * 0.5 * 0.00694$
BASEMENT (Non-living area)	1306	$-\left((964.1 + 964.1) * (76.2 - 344.6) + (964.1 + 963.7) * (344.6 - 344.6) + (963.7 + 963.7) * (344.6 - 338.7) + (963.7 + 247.5) * (338.7 - 338.7) + (247.5 + 247.5) * (338.7 - 76.2) + (247.5 + 964.1) * (76.2 - 76.2)\right) * 0.5 * 0.00694$
PATIO (Non-living area)	502	$-\left((247.1 + 247.5) * (367.8 - 527.9) + (247.5 + 247.5) * (527.9 - 788.3) + (247.5 + 75.6) * (788.3 - 788.3) + (75.6 + 75.6) * (788.3 - 367.8) + (75.6 + 247.1) * (367.8 - 367.8)\right) * 0.5 * 0.00694$

# Lake Vista Drive 2075, Forest, Virginia, United States

Gross Living Area: 2685 sq. ft



## Space

Area (sq. ft)

Calculation Coordinate Polygon Area Algorithm using inches

FLOOR 2  
(Living area)

2231

$$\begin{aligned}
 & -((292.4 + 361.4) * (187.6 - 187.7) + (361.4 + 389) * (187.7 - 215.3) + (389 + 601.7) * (215.3 - \\
 & 215.3) + (601.7 + 629.1) * (215.3 - 187.9) + (629.1 + 629.1) * (187.9 - 187.7) + (629.1 + 698.4) * \\
 & (187.7 - 187.7) + (698.4 + 726.1) * (187.7 - 215.3) + (726.1 + 793.2) * (215.3 - 215.3) + (793.2 + \\
 & 793.2) * (215.3 - 644.3) + (793.2 + 731.2) * (644.3 - 644.3) + (731.2 + 731.2) * (644.3 - 640.2) + \\
 & (731.2 + 509.8) * (640.2 - 640.2) + (509.8 + 509.8) * (640.2 - 657) + (509.8 + 499.8) * (657 - 667) \\
 & + (499.8 + 76.6) * (667 - 667) + (76.6 + 76.6) * (667 - 215.3) + (76.6 + 264.9) * (215.3 - 215.3) + \\
 & (264.9 + 269.1) * (215.3 - 225.3) + (269.1 + 269.1) * (225.3 - 225.1) + (269.1 + 296.6) * (225.1 -
 \end{aligned}$$

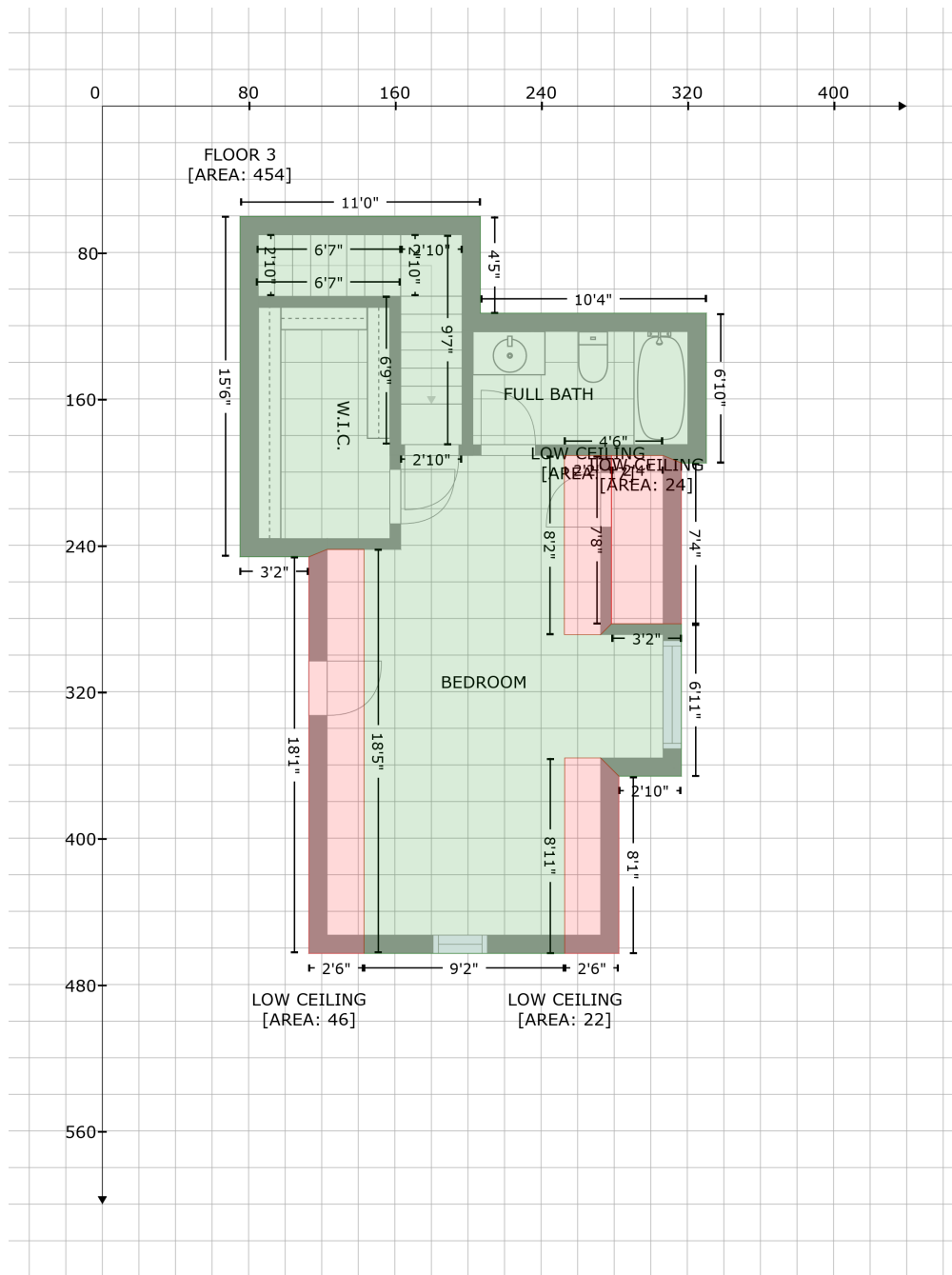
# Lake Vista Drive 2075, Forest, Virginia, United States

Gross Living Area: 2685 sq. ft

Space	Area (sq. ft)	Calculation <small>Coordinate Polygon Area Algorithm using inches</small>
GARAGE (Non-living area)	378	$197.6 + (296.6 + 289.5) * (197.6 - 190.6) + (289.5 + 292.4) * (190.6 - 187.6) * 0.5 * 0.00694$ $-((731.2 + 731.2) * (640.2 - 644.3) + (731.2 + 741.2) * (644.3 - 644.3) + (741.2 + 741.2) * (644.3 - 876.3) + (741.2 + 621.3) * (876.3 - 876.3) + (621.3 + 621.3) * (876.3 - 857.2) + (621.3 + 499.8) * (857.2 - 857.2) + (499.8 + 499.8) * (857.2 - 667) + (499.8 + 509.8) * (667 - 657) + (509.8 + 509.8) * (657 - 640.2) + (509.8 + 731.2) * (640.2 - 640.2)) * 0.5 * 0.00694$
PORCH (Non-living area)	146	$-(499.8 + 499.8) * (667 - 756.2) + (499.8 + 485.9) * (756.2 - 756.2) + (485.9 + 485.9) * (756.2 - 762.1) + (485.9 + 429.3) * (762.1 - 762.1) + (429.3 + 429.3) * (762.1 - 756.2) + (429.3 + 268) * (756.2 - 756.2) + (268 + 268) * (756.2 - 667) + (268 + 499.8) * (667 - 667)) * 0.5 * 0.00694$
DECK (Non-living area)	413	$-(726.1 + 726.1) * (74.9 - 215.3) + (726.1 + 698.4) * (215.3 - 187.7) + (698.4 + 629.1) * (187.7 - 187.7) + (629.1 + 601.7) * (187.7 - 215.3) + (601.7 + 389) * (215.3 - 215.3) + (389 + 361.4) * (215.3 - 187.7) + (361.4 + 292.4) * (187.7 - 187.6) + (292.4 + 264.9) * (187.6 - 215.3) + (264.9 + 264.9) * (215.3 - 74.9) + (264.9 + 726.1) * (74.9 - 74.9)) * 0.5 * 0.00694$

# Lake Vista Drive 2075, Forest, Virginia, United States

Gross Living Area: 2685 sq. ft



## Space

Area (sq. ft)

Calculation Coordinate Polygon Area Algorithm using inches

FLOOR 3  
(Living area)

454

$$-((206.8 + 206.8) * (60.3 - 113.2) + (206.8 + 330.4) * (113.2 - 113.1) + (330.4 + 330.4) * (113.1 - 195) + (330.4 + 316.7) * (195 - 195) + (316.7 + 306.7) * (195 - 190.9) + (306.7 + 252.8) * (190.9 - 190.9) + (252.8 + 252.8) * (190.9 - 288.8) + (252.8 + 272.6) * (288.8 - 288.8) + (272.6 + 278.5) * (288.8 - 282.9) + (278.5 + 316.7) * (282.9 - 282.9) + (316.7 + 316.7) * (282.9 - 366.2) + (316.7 + 282.6) * (366.2 - 366.2) + (282.6 + 272.6) * (366.2 - 356.2) + (272.6 + 252.9) * (356.2 - 356.2) + (252.9 + 252.9) * (356.2 - 463) + (252.9 + 143.1) * (463 - 463) + (143.1 + 143.1) * (463 - 242.2) + (143.1 + 123) * (242.2 - 242.2) + (123 + 113) * (242.2 - 246.3) + (113 + 75.3) * (246.3 - 246.3) +$$

# Lake Vista Drive 2075, Forest, Virginia, United States

Gross Living Area: 2685 sq. ft

Space	Area (sq. ft)	Calculation <small>Coordinate Polygon Area Algorithm using inches</small>
LOW CEILING (Non-living area)	22	$(75.3 + 75.3) * (246.3 - 60.3) + (75.3 + 206.8) * (60.3 - 60.3) * 0.5 * 0.00694$ $-((272.6 + 282.6) * (356.2 - 366.2) + (282.6 + 282.6) * (366.2 - 463) + (282.6 + 252.9) * (463 - 463) + (252.9 + 252.9) * (463 - 356.2) + (252.9 + 272.6) * (356.2 - 356.2)) * 0.5 * 0.00694$
LOW CEILING (Non-living area)	46	$-((143.1 + 143.1) * (242.2 - 463) + (143.1 + 113) * (463 - 463) + (113 + 113) * (463 - 246.3) + (113 + 123) * (246.3 - 242.2) + (123 + 143.1) * (242.2 - 242.2)) * 0.5 * 0.00694$
LOW CEILING (Non-living area)	17	$-((278.5 + 278.5) * (190.9 - 282.9) + (278.5 + 272.6) * (282.9 - 288.8) + (272.6 + 252.8) * (288.8 - 288.8) + (252.8 + 252.8) * (288.8 - 190.9) + (252.8 + 278.5) * (190.9 - 190.9)) * 0.5 * 0.00694$
LOW CEILING (Non-living area)	24	$-((306.7 + 316.7) * (190.9 - 195) + (316.7 + 316.7) * (195 - 282.9) + (316.7 + 278.5) * (282.9 - 282.9) + (278.5 + 278.5) * (282.9 - 190.9) + (278.5 + 306.7) * (190.9 - 190.9)) * 0.5 * 0.00694$