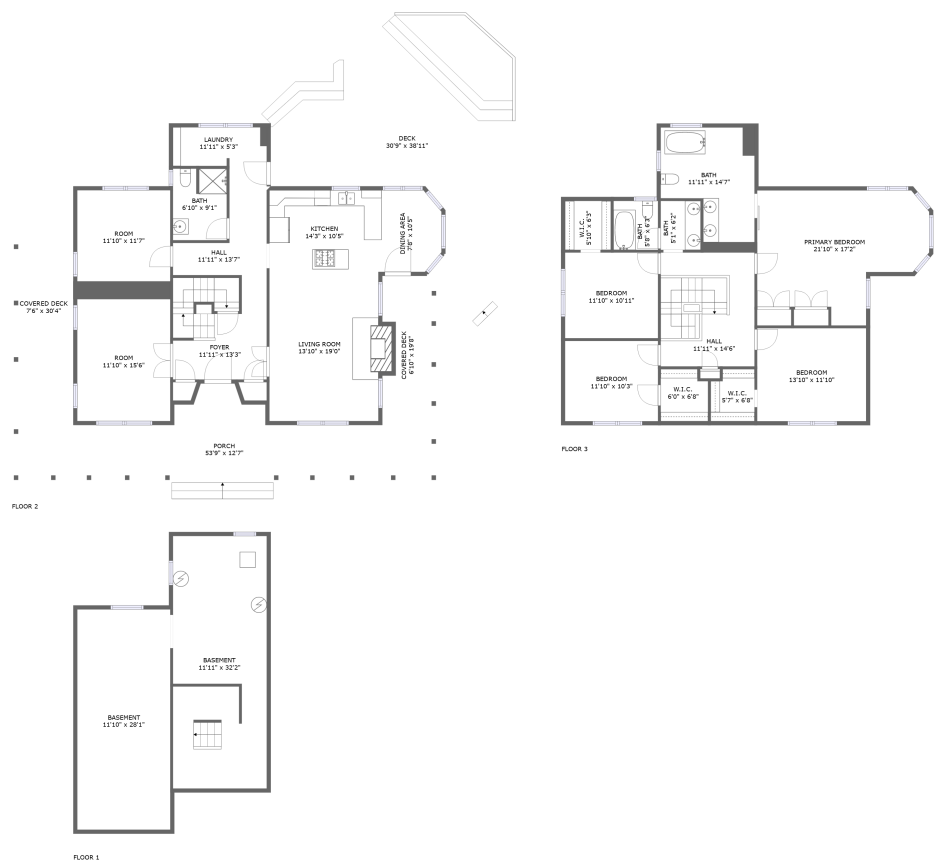



Home report


1414 South County Road 3, Fort Collins, Larimer County,
Colorado, United States, 80524




Property summary




0
Garages




4
Bedrooms




3
Bathrooms




0
Half baths



3
Floors

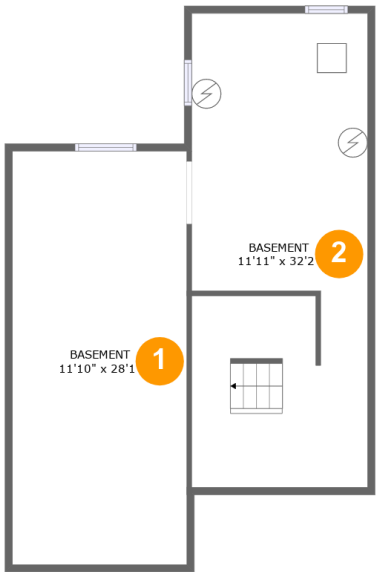


2,704
Gross living
area sqft



4,995
Total sqft

1414 South County Road 3, Fort Collins, Larimer County,
Colorado, United States, 80524



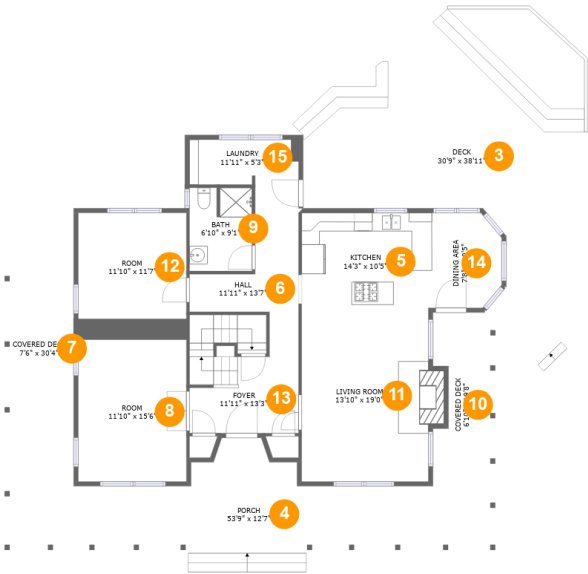
Room dimensions

Floor 1 Total sqft: 786 Living area: 0

#		Max Dimensions	sqft	Included
1	Basement	11'10" x 28'1"	332 sq. ft	No
2	Basement	11'11" x 32'2"	379 sq. ft	No

Home report

1414 South County Road 3, Fort Collins, Larimer County,
Colorado, United States, 80524



Room dimensions

Floor 2

Total sqft: 2843 Living area: 1338

#		Max Dimensions	sqft	Included
3	Deck	30'9" x 38'11"	694 sq. ft	No
4	Porch	53'9" x 12'7"	451 sq. ft	No
5	Kitchen	14'3" x 10'5"	148 sq. ft	Yes
6	Hall	11'11" x 13'7"	94 sq. ft	Yes
7	Covered Deck	7'6" x 30'4"	230 sq. ft	No
8	Room	11'10" x 15'6"	184 sq. ft	Yes
9	Bath	6'10" x 9'1"	61 sq. ft	Yes
10	Covered Deck	6'10" x 19'8"	119 sq. ft	No
11	Living Room	13'10" x 19'0"	273 sq. ft	Yes
12	Room	11'10" x 11'7"	137 sq. ft	Yes
13	Foyer	11'11" x 13'3"	151 sq. ft	Yes

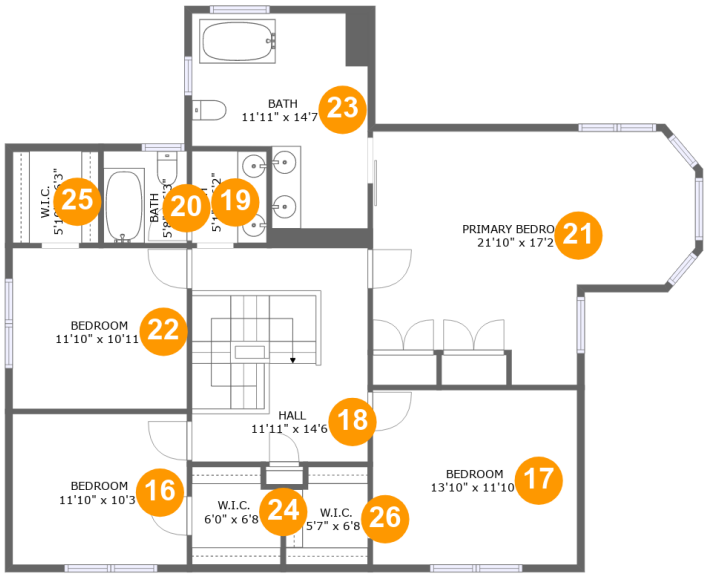
Home report

1414 South County Road 3, Fort Collins, Larimer County,
Colorado, United States, 80524

#		Max Dimensions	sqft	Included
14	Dining Area	7'8" x 10'5"	74 sq. ft	Yes
15	Laundry	11'11" x 5'3"	60 sq. ft	Yes

Home report

1414 South County Road 3, Fort Collins, Larimer County,
Colorado, United States, 80524



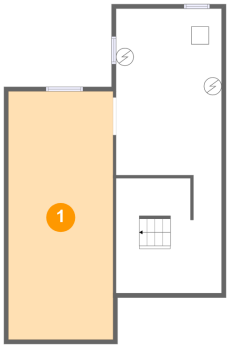
Room dimensions

Floor 3 Total sqft: 1366 Living area: 1366

#		Max Dimensions	sqft	Included
16	Bedroom	11'10" x 10'3"	121 sq. ft	Yes
17	Bedroom	13'10" x 11'10"	164 sq. ft	Yes
18	Hall	11'11" x 14'6"	173 sq. ft	Yes
19	Bath	5'1" x 6'2"	32 sq. ft	Yes
20	Bath	5'8" x 6'3"	35 sq. ft	Yes
21	Primary Bedroom	21'10" x 17'2"	294 sq. ft	Yes
22	Bedroom	11'10" x 10'11"	129 sq. ft	Yes
23	Bath	11'11" x 14'7"	144 sq. ft	Yes
24	W.I.C.	6'0" x 6'8"	38 sq. ft	Yes
25	W.I.C.	5'10" x 6'3"	36 sq. ft	Yes
26	W.I.C.	5'7" x 6'8"	35 sq. ft	Yes

1414 South County Road 3, Fort Collins, Larimer County,
Colorado, United States, 80524

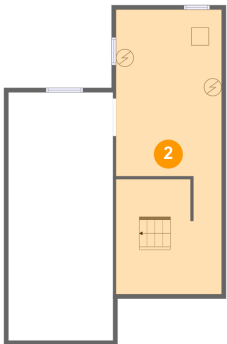
1 Floor 1 - Basement



Max Dimensions: 11'10" x 28'1"
Calculated Area: 332 sq. ft
Included: No

Heated: Yes
Finished: No
Enclosed: Yes
Contiguous: Yes
Permitted: Yes
Wet space: No
Addition: No
Conversion: No

2 Floor 1 - Basement

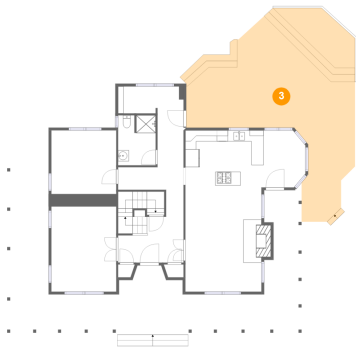


Max Dimensions: 11'11" x 32'2"
Calculated Area: 379 sq. ft
Included: No

Heated: Yes
Finished: No
Enclosed: Yes
Contiguous: Yes
Permitted: Yes
Wet space: No
Addition: No
Conversion: No

1414 South County Road 3, Fort Collins, Larimer County,
Colorado, United States, 80524

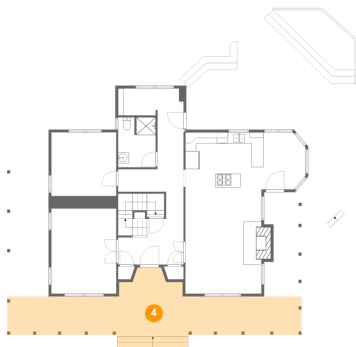
3 Floor 2 - Deck



Max Dimensions: 30'9" x 38'11"
Calculated Area: 694 sq. ft
Included: No

Heated: No
Finished: Yes
Enclosed: No
Contiguous: Yes
Permitted: Yes
Wet space: No
Addition: No
Conversion: No

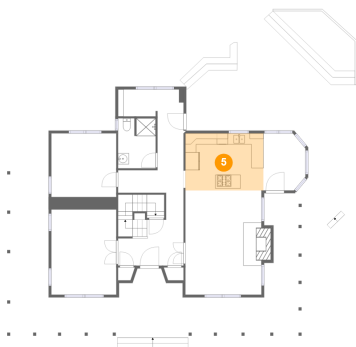
4 Floor 2 - Porch



Max Dimensions: 53'9" x 12'7"
Calculated Area: 451 sq. ft
Included: No

Heated: No
Finished: Yes
Enclosed: No
Contiguous: Yes
Permitted: Yes
Wet space: No
Addition: No
Conversion: No

5 Floor 2 - Kitchen

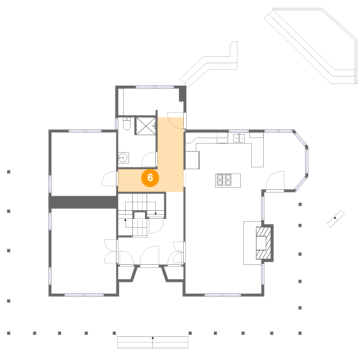


Max Dimensions: 14'3" x 10'5"
Calculated Area: 148 sq. ft
Included: Yes

Heated: Yes
Finished: Yes
Enclosed: Yes
Contiguous: Yes
Permitted: Yes
Wet space: No
Addition: No
Conversion: No

1414 South County Road 3, Fort Collins, Larimer County,
Colorado, United States, 80524

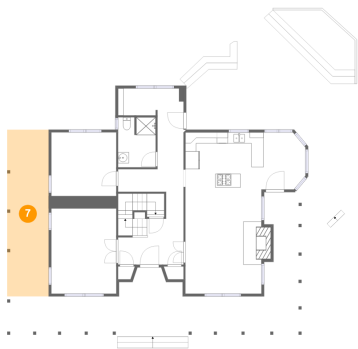
6 Floor 2 - Hall



Max Dimensions: 11'11" x 13'7"
Calculated Area: 94 sq. ft
Included: Yes

Heated: Yes
Finished: Yes
Enclosed: Yes
Contiguous: Yes
Permitted: Yes
Wet space: No
Addition: No
Conversion: No

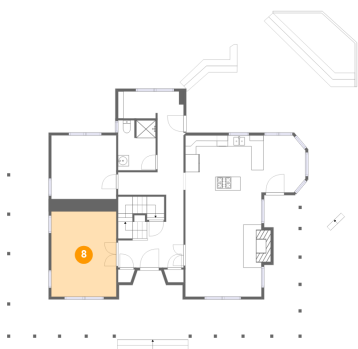
7 Floor 2 - Covered Deck



Max Dimensions: 7'6" x 30'4"
Calculated Area: 230 sq. ft
Included: No

Heated: No
Finished: Yes
Enclosed: No
Contiguous: Yes
Permitted: Yes
Wet space: No
Addition: No
Conversion: No

8 Floor 2 - Room

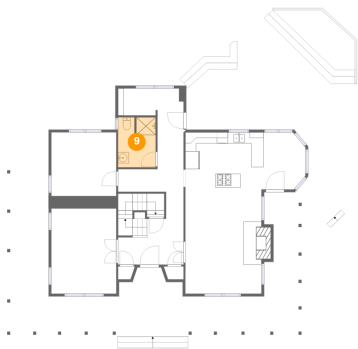


Max Dimensions: 11'10" x 15'6"
Calculated Area: 184 sq. ft
Included: Yes

Heated: Yes
Finished: Yes
Enclosed: Yes
Contiguous: Yes
Permitted: Yes
Wet space: No
Addition: No
Conversion: No

1414 South County Road 3, Fort Collins, Larimer County,
Colorado, United States, 80524

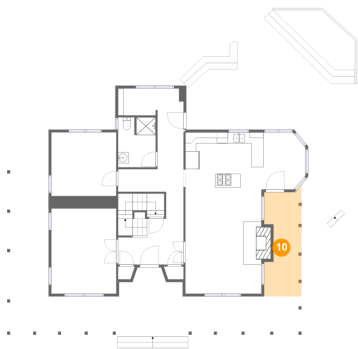
9 Floor 2 - Bath



Max Dimensions: 6'10" x 9'1"
Calculated Area: 61 sq. ft
Included: Yes

Heated: Yes
Finished: Yes
Enclosed: Yes
Contiguous: Yes
Permitted: Yes
Wet space: Yes
Addition: No
Conversion: No

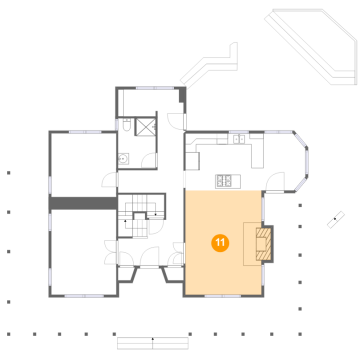
10 Floor 2 - Covered Deck



Max Dimensions: 6'10" x 19'8"
Calculated Area: 119 sq. ft
Included: No

Heated: No
Finished: Yes
Enclosed: No
Contiguous: Yes
Permitted: Yes
Wet space: No
Addition: No
Conversion: No

11 Floor 2 - Living Room

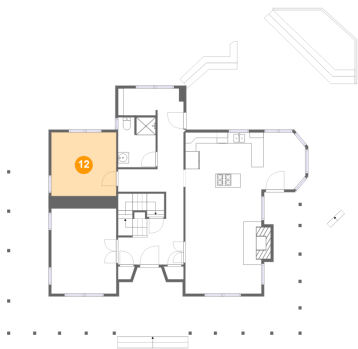


Max Dimensions: 13'10" x 19'0"
Calculated Area: 273 sq. ft
Included: Yes

Heated: Yes
Finished: Yes
Enclosed: Yes
Contiguous: Yes
Permitted: Yes
Wet space: No
Addition: No
Conversion: No

1414 South County Road 3, Fort Collins, Larimer County,
Colorado, United States, 80524

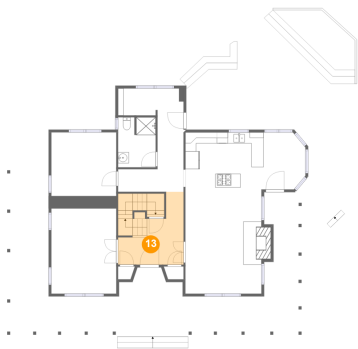
12 Floor 2 - Room



Max Dimensions: 11'10" x 11'7"
Calculated Area: 137 sq. ft
Included: Yes

Heated: Yes
Finished: Yes
Enclosed: Yes
Contiguous: Yes
Permitted: Yes
Wet space: No
Addition: No
Conversion: No

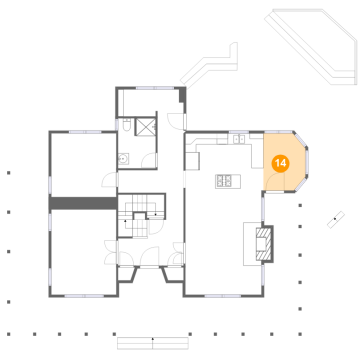
13 Floor 2 - Foyer



Max Dimensions: 11'11" x 13'3"
Calculated Area: 151 sq. ft
Included: Yes

Heated: Yes
Finished: Yes
Enclosed: Yes
Contiguous: Yes
Permitted: Yes
Wet space: No
Addition: No
Conversion: No

14 Floor 2 - Dining Area

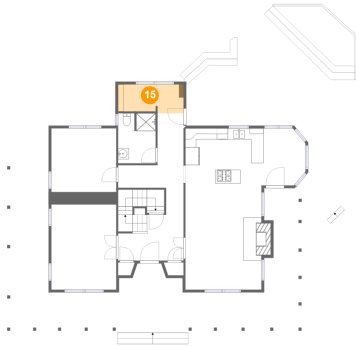


Max Dimensions: 7'8" x 10'5"
Calculated Area: 74 sq. ft
Included: Yes

Heated: Yes
Finished: Yes
Enclosed: Yes
Contiguous: Yes
Permitted: Yes
Wet space: No
Addition: No
Conversion: No

1414 South County Road 3, Fort Collins, Larimer County,
Colorado, United States, 80524

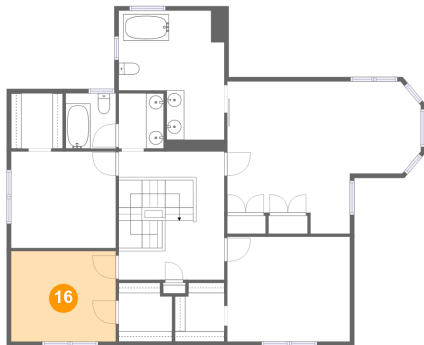
15 Floor 2 - Laundry



Max Dimensions: 11'11" x 5'3"
Calculated Area: 60 sq. ft
Included: Yes

Heated: Yes
Finished: Yes
Enclosed: Yes
Contiguous: Yes
Permitted: Yes
Wet space: No
Addition: No
Conversion: No

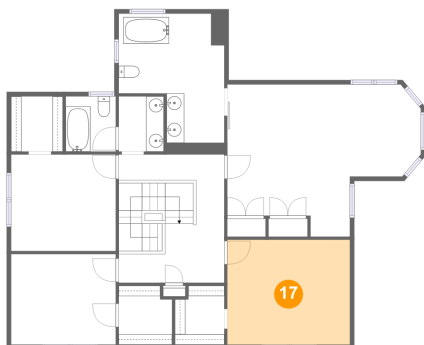
16 Floor 3 - Bedroom



Max Dimensions: 11'10" x 10'3"
Calculated Area: 121 sq. ft
Included: Yes

Heated: Yes
Finished: Yes
Enclosed: Yes
Contiguous: Yes
Permitted: Yes
Wet space: No
Addition: No
Conversion: No

17 Floor 3 - Bedroom

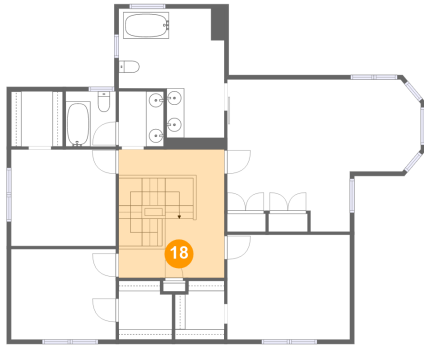


Max Dimensions: 13'10" x 11'10"
Calculated Area: 164 sq. ft
Included: Yes

Heated: Yes
Finished: Yes
Enclosed: Yes
Contiguous: Yes
Permitted: Yes
Wet space: No
Addition: No
Conversion: No

1414 South County Road 3, Fort Collins, Larimer County,
Colorado, United States, 80524

18 Floor 3 - Hall



Max Dimensions: 11'11" x 14'6"
Calculated Area: 173 sq. ft
Included: Yes

Heated: Yes
Finished: Yes
Enclosed: Yes
Contiguous: Yes
Permitted: Yes
Wet space: No
Addition: No
Conversion: No

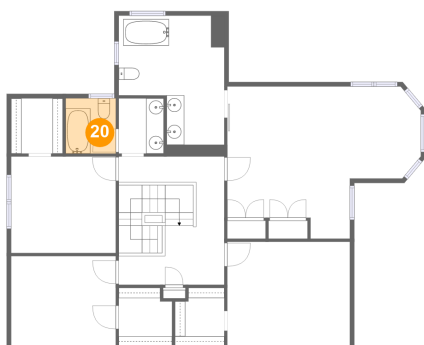
19 Floor 3 - Bath



Max Dimensions: 5'1" x 6'2"
Calculated Area: 32 sq. ft
Included: Yes

Heated: Yes
Finished: Yes
Enclosed: Yes
Contiguous: Yes
Permitted: Yes
Wet space: Yes
Addition: No
Conversion: No

20 Floor 3 - Bath



Max Dimensions: 5'8" x 6'3"
Calculated Area: 35 sq. ft
Included: Yes

Heated: Yes
Finished: Yes
Enclosed: Yes
Contiguous: Yes
Permitted: Yes
Wet space: Yes
Addition: No
Conversion: No

1414 South County Road 3, Fort Collins, Larimer County,
Colorado, United States, 80524

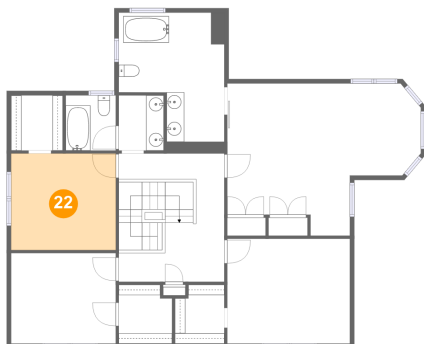
21 Floor 3 - Primary Bedroom



Max Dimensions: 21'10" x 17'2"
Calculated Area: 294 sq. ft
Included: Yes

Heated: Yes
Finished: Yes
Enclosed: Yes
Contiguous: Yes
Permitted: Yes
Wet space: No
Addition: No
Conversion: No

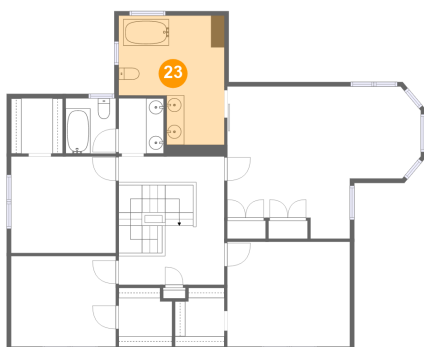
22 Floor 3 - Bedroom



Max Dimensions: 11'10" x 10'11"
Calculated Area: 129 sq. ft
Included: Yes

Heated: Yes
Finished: Yes
Enclosed: Yes
Contiguous: Yes
Permitted: Yes
Wet space: No
Addition: No
Conversion: No

23 Floor 3 - Bath



Max Dimensions: 11'11" x 14'7"
Calculated Area: 144 sq. ft
Included: Yes

Heated: Yes
Finished: Yes
Enclosed: Yes
Contiguous: Yes
Permitted: Yes
Wet space: Yes
Addition: No
Conversion: No

1414 South County Road 3, Fort Collins, Larimer County,
Colorado, United States, 80524

24 Floor 3 - W.I.C.



Max Dimensions: 6'0" x 6'8"
Calculated Area: 38 sq. ft
Included: Yes

Heated: Yes
Finished: Yes
Enclosed: Yes
Contiguous: Yes
Permitted: Yes
Wet space: No
Addition: No
Conversion: No

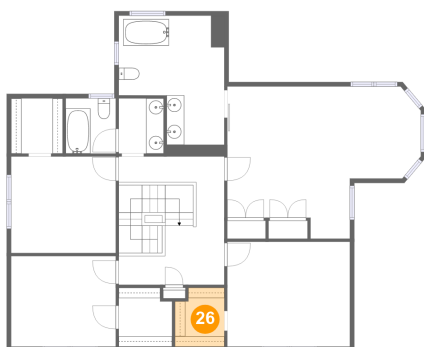
25 Floor 3 - W.I.C.



Max Dimensions: 5'10" x 6'3"
Calculated Area: 36 sq. ft
Included: Yes

Heated: Yes
Finished: Yes
Enclosed: Yes
Contiguous: Yes
Permitted: Yes
Wet space: No
Addition: No
Conversion: No

26 Floor 3 - W.I.C.



Max Dimensions: 5'7" x 6'8"
Calculated Area: 35 sq. ft
Included: Yes

Heated: Yes
Finished: Yes
Enclosed: Yes
Contiguous: Yes
Permitted: Yes
Wet space: No
Addition: No
Conversion: No