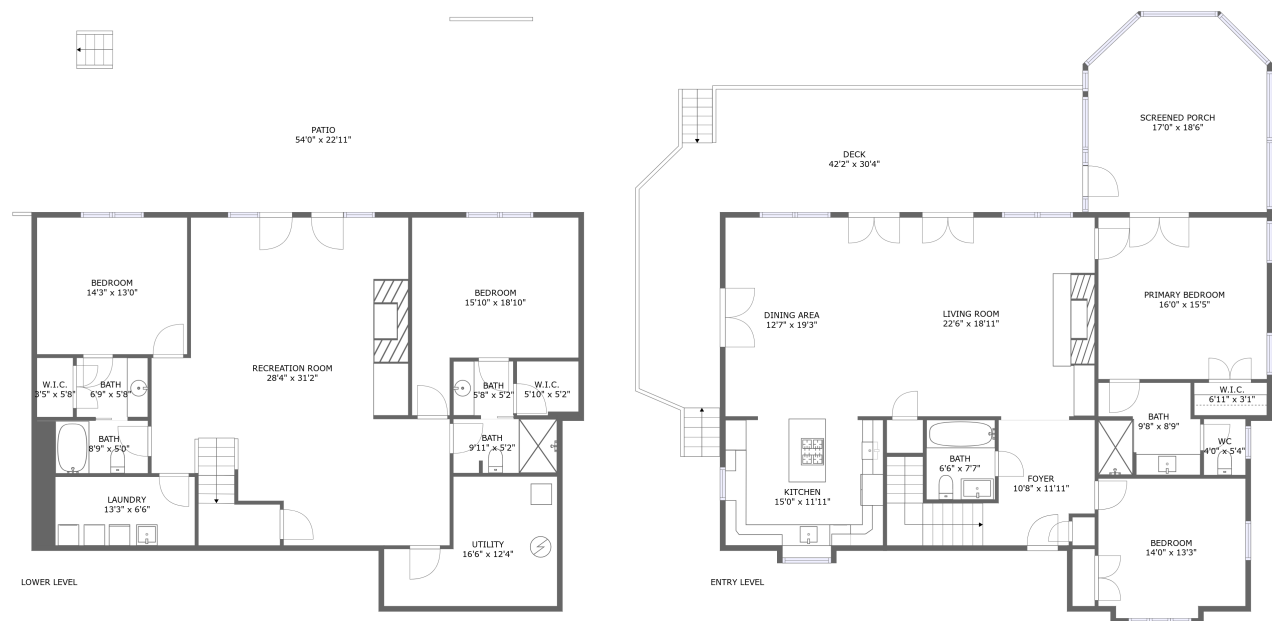


Home report

219 Lee Drive, Huddleston, Bedford County, Virginia, United States, 24104




Total Area: 3364 sq. ft


Floor 1: 1677 sq. ft, Floor 2: 1687 sq. ft

Excluded: Patio 920 sq. ft, Screened porch 294 sq. ft, Deck 617 sq. ft, Embedded window 7 sq. ft, Walls: 204 sq. ft

Property summary

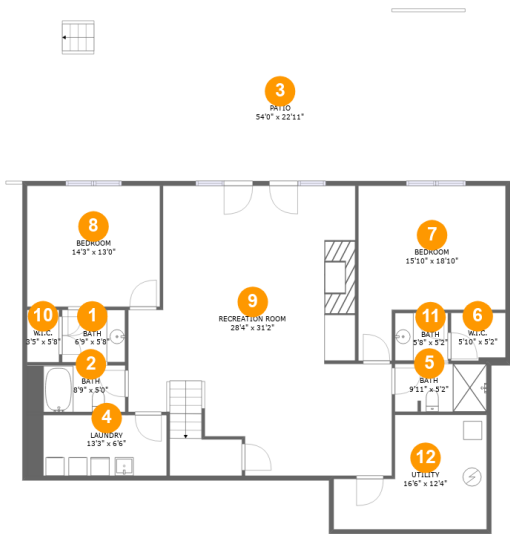
 2 Floors

 4 Bedrooms

 4 Bathrooms

Home report

219 Lee Drive, Huddleston, Bedford County, Virginia, United States, 24104



Room dimensions

Floor 1 Total:1677sqft Excluded: 920sqft

#		Max Dimensions	sqft	Included
1	Bath	6'9" x 5'8"	38 sq. ft	Yes
2	Bath	8'9" x 5'0"	53 sq. ft	Yes
3	Patio	54'0" x 22'11"	920 sq. ft	No
4	Laundry	13'3" x 6'6"	98 sq. ft	Yes
5	Bath	9'11" x 5'2"	50 sq. ft	Yes
6	W.I.C.	5'10" x 5'2"	30 sq. ft	Yes
7	Bedroom	15'10" x 18'10"	231 sq. ft	Yes
8	Bedroom	14'3" x 13'0"	186 sq. ft	Yes
9	Recreation Room	28'4" x 31'2"	724 sq. ft	Yes
10	W.I.C.	3'5" x 5'8"	19 sq. ft	Yes
11	Bath	5'8" x 5'2"	29 sq. ft	Yes

Home report

219 Lee Drive, Huddleston, Bedford County, Virginia, United States, 24104

#		Max Dimensions	sqft	Included
12	Utility	16'6" x 12'4"	158 sq. ft	Yes

Home report

219 Lee Drive, Huddleston, Bedford County, Virginia, United States, 24104



Room dimensions

Floor 2

Total:1687sqft

Excluded: 918sqft

#		Max Dimensions	sqft	Included
13	Primary Bedroom	16'0" x 15'5"	247 sq. ft	Yes
14	Bath	9'8" x 8'9"	80 sq. ft	Yes
15	Dining Area	12'7" x 19'3"	242 sq. ft	Yes
16	Deck	42'2" x 30'4"	617 sq. ft	No
17	Bedroom	14'0" x 13'3"	179 sq. ft	Yes
18	Living Room	22'6" x 18'11"	427 sq. ft	Yes
19	Bath	6'6" x 7'7"	49 sq. ft	Yes
20	Kitchen	15'0" x 11'11"	179 sq. ft	Yes
21	WC	4'0" x 5'4"	21 sq. ft	Yes
22	Screened Porch	17'0" x 18'6"	294 sq. ft	No
23	W.I.C.	6'11" x 3'1"	22 sq. ft	Yes

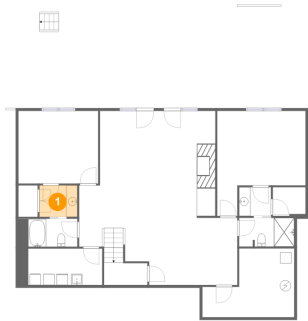
Home report

219 Lee Drive, Huddleston, Bedford County, Virginia, United States, 24104

#		Max Dimensions	sqft	Included
24	Foyer	10'8" x 11'11"	160 sq. ft	Yes

219 Lee Drive, Huddleston, Bedford County, Virginia, United States, 24104

1 Floor 1 - Bath



Max Dimensions: 6'9" x 5'8"
Calculated Area: 38 sq. ft
Included: Yes

Heated: Yes
Finished: Yes
Enclosed: Yes
Contiguous: Yes
Permitted: Yes
Wet space: Yes
Addition: No
Conversion: No

2 Floor 1 - Bath

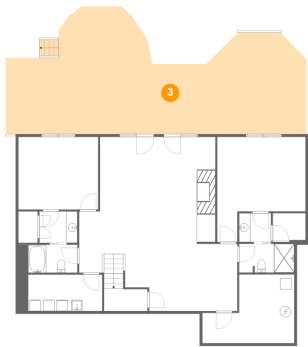


Max Dimensions: 8'9" x 5'0"
Calculated Area: 53 sq. ft
Included: Yes

Heated: Yes
Finished: Yes
Enclosed: Yes
Contiguous: Yes
Permitted: Yes
Wet space: Yes
Addition: No
Conversion: No

219 Lee Drive, Huddleston, Bedford County, Virginia, United States, 24104

3 Floor 1 - Patio



Max Dimensions: 54'0" x 22'11"
Calculated Area: 920 sq. ft
Included: No

Heated: No
Finished: Yes
Enclosed: No
Contiguous: Yes
Permitted: Yes
Wet space: No
Addition: No
Conversion: No

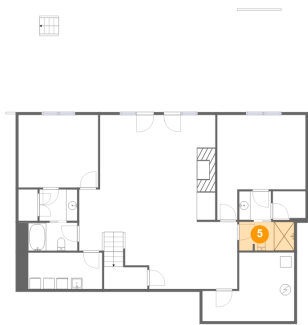
4 Floor 1 - Laundry



Max Dimensions: 13'3" x 6'6"
Calculated Area: 98 sq. ft
Included: Yes

Heated: Yes
Finished: Yes
Enclosed: Yes
Contiguous: Yes
Permitted: Yes
Wet space: No
Addition: No
Conversion: No

5 Floor 1 - Bath



Max Dimensions: 9'11" x 5'2"
Calculated Area: 50 sq. ft
Included: Yes

Heated: Yes
Finished: Yes
Enclosed: Yes
Contiguous: Yes
Permitted: Yes
Wet space: Yes
Addition: No
Conversion: No

219 Lee Drive, Huddleston, Bedford County, Virginia, United States, 24104

6 Floor 1 - W.I.C.



Max Dimensions: 5'10" x 5'2"
Calculated Area: 30 sq. ft
Included: Yes

Heated: Yes
Finished: Yes
Enclosed: Yes
Contiguous: Yes
Permitted: Yes
Wet space: No
Addition: No
Conversion: No

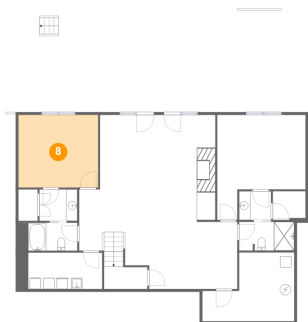
7 Floor 1 - Bedroom



Max Dimensions: 15'10" x 18'10"
Calculated Area: 231 sq. ft
Included: Yes

Heated: Yes
Finished: Yes
Enclosed: Yes
Contiguous: Yes
Permitted: Yes
Wet space: No
Addition: No
Conversion: No

8 Floor 1 - Bedroom



Max Dimensions: 14'3" x 13'0"
Calculated Area: 186 sq. ft
Included: Yes

Heated: Yes
Finished: Yes
Enclosed: Yes
Contiguous: Yes
Permitted: Yes
Wet space: No
Addition: No
Conversion: No

219 Lee Drive, Huddleston, Bedford County, Virginia, United States, 24104

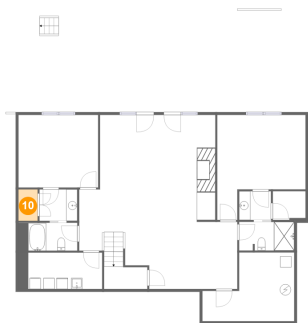
9 Floor 1 - Recreation Room



Max Dimensions: 28'4" x 31'2"
Calculated Area: 724 sq. ft
Included: Yes

Heated: Yes
Finished: Yes
Enclosed: Yes
Contiguous: Yes
Permitted: Yes
Wet space: No
Addition: No
Conversion: No

10 Floor 1 - W.I.C.



Max Dimensions: 3'5" x 5'8"
Calculated Area: 19 sq. ft
Included: Yes

Heated: Yes
Finished: Yes
Enclosed: Yes
Contiguous: Yes
Permitted: Yes
Wet space: No
Addition: No
Conversion: No

11 Floor 1 - Bath



Max Dimensions: 5'8" x 5'2"
Calculated Area: 29 sq. ft
Included: Yes

Heated: Yes
Finished: Yes
Enclosed: Yes
Contiguous: Yes
Permitted: Yes
Wet space: Yes
Addition: No
Conversion: No

219 Lee Drive, Huddleston, Bedford County, Virginia, United States, 24104

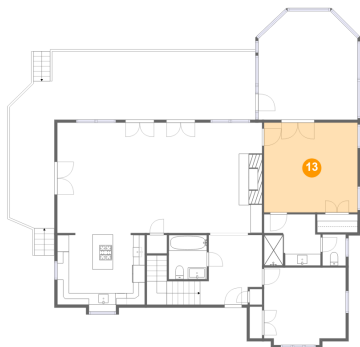
12 Floor 1 - Utility



Max Dimensions: 16'6" x 12'4"
Calculated Area: 158 sq. ft
Included: Yes

Heated: Yes
Finished: Yes
Enclosed: Yes
Contiguous: Yes
Permitted: Yes
Wet space: No
Addition: No
Conversion: No

13 Floor 2 - Primary Bedroom



Max Dimensions: 16'0" x 15'5"
Calculated Area: 247 sq. ft
Included: Yes

Heated: Yes
Finished: Yes
Enclosed: Yes
Contiguous: Yes
Permitted: Yes
Wet space: No
Addition: No
Conversion: No

14 Floor 2 - Bath

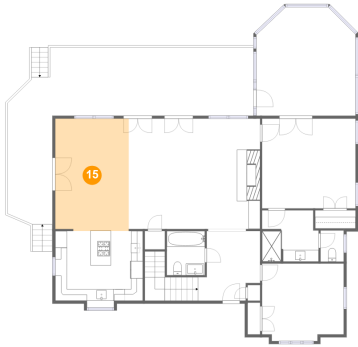


Max Dimensions: 9'8" x 8'9"
Calculated Area: 80 sq. ft
Included: Yes

Heated: Yes
Finished: Yes
Enclosed: Yes
Contiguous: Yes
Permitted: Yes
Wet space: Yes
Addition: No
Conversion: No

219 Lee Drive, Huddleston, Bedford County, Virginia, United States, 24104

15 Floor 2 - Dining Area



Max Dimensions: 12'7" x 19'3"
Calculated Area: 242 sq. ft
Included: Yes

Heated: Yes
Finished: Yes
Enclosed: Yes
Contiguous: Yes
Permitted: Yes
Wet space: No
Addition: No
Conversion: No

16 Floor 2 - Deck



Max Dimensions: 42'2" x 30'4"
Calculated Area: 617 sq. ft
Included: No

Heated: No
Finished: Yes
Enclosed: No
Contiguous: Yes
Permitted: Yes
Wet space: No
Addition: No
Conversion: No

17 Floor 2 - Bedroom

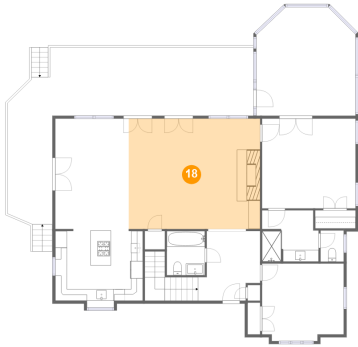


Max Dimensions: 14'0" x 13'3"
Calculated Area: 179 sq. ft
Included: Yes

Heated: Yes
Finished: Yes
Enclosed: Yes
Contiguous: Yes
Permitted: Yes
Wet space: No
Addition: No
Conversion: No

219 Lee Drive, Huddleston, Bedford County, Virginia, United States, 24104

18 Floor 2 - Living Room



Max Dimensions: 22'6" x 18'11"
Calculated Area: 427 sq. ft
Included: Yes

Heated: Yes
Finished: Yes
Enclosed: Yes
Contiguous: Yes
Permitted: Yes
Wet space: No
Addition: No
Conversion: No

19 Floor 2 - Bath



Max Dimensions: 6'6" x 7'7"
Calculated Area: 49 sq. ft
Included: Yes

Heated: Yes
Finished: Yes
Enclosed: Yes
Contiguous: Yes
Permitted: Yes
Wet space: Yes
Addition: No
Conversion: No

20 Floor 2 - Kitchen



Max Dimensions: 15'0" x 11'11"
Calculated Area: 179 sq. ft
Included: Yes

Heated: Yes
Finished: Yes
Enclosed: Yes
Contiguous: Yes
Permitted: Yes
Wet space: No
Addition: No
Conversion: No

219 Lee Drive, Huddleston, Bedford County, Virginia, United States, 24104

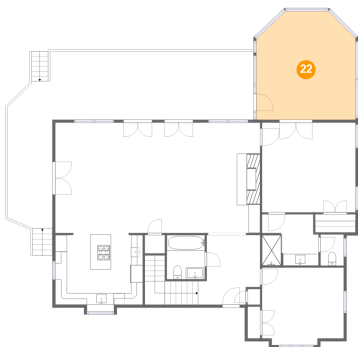
21 Floor 2 - WC



Max Dimensions: 4'0" x 5'4"
Calculated Area: 21 sq. ft
Included: Yes

Heated: Yes
Finished: Yes
Enclosed: Yes
Contiguous: Yes
Permitted: Yes
Wet space: Yes
Addition: No
Conversion: No

22 Floor 2 - Screened Porch



Max Dimensions: 17'0" x 18'6"
Calculated Area: 294 sq. ft
Included: No

Heated: No
Finished: Yes
Enclosed: No
Contiguous: Yes
Permitted: Yes
Wet space: No
Addition: No
Conversion: No

23 Floor 2 - W.I.C.



Max Dimensions: 6'11" x 3'1"
Calculated Area: 22 sq. ft
Included: Yes

Heated: Yes
Finished: Yes
Enclosed: Yes
Contiguous: Yes
Permitted: Yes
Wet space: No
Addition: No
Conversion: No

219 Lee Drive, Huddleston, Bedford County, Virginia, United States, 24104

24 Floor 2 - Foyer



Max Dimensions: 10'8" x 11'11"
Calculated Area: 160 sq. ft
Included: Yes

Heated: Yes
Finished: Yes
Enclosed: Yes
Contiguous: Yes
Permitted: Yes
Wet space: No
Addition: No
Conversion: No