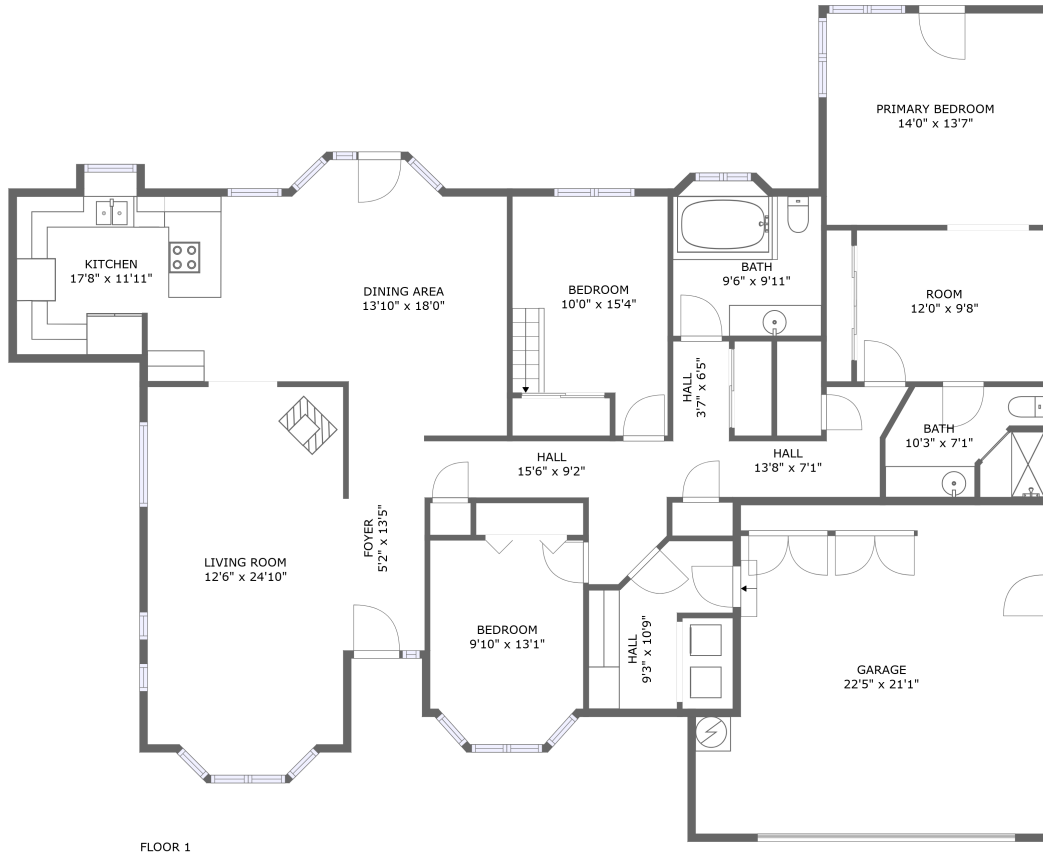


4652 Columbine Drive, Redding, Shasta County, California, United States, 96002



Property Summary



1 floors



3 bedrooms



2 bathrooms



2,513 total sqft

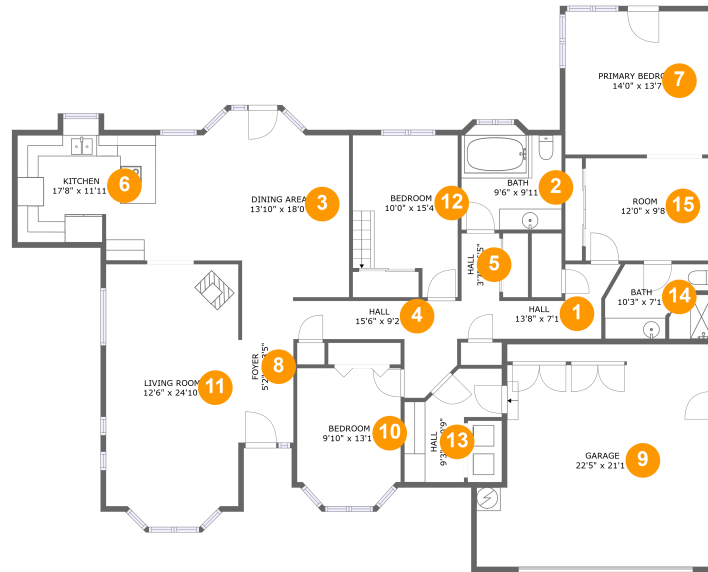


1 garages



2,048 Gross Living Area sqft

4652 Columbine Drive, Redding, Shasta County, California, United States, 96002



Room Dimensions

Floor 1

Total sqft: 2513

Living area: 2048

#	Room name	Dimensions	Area (sqft)	Counted as Living Area
1	Hall	13'8" x 7'1"	64 sq. ft	Yes
2	Bath	9'6" x 9'11"	90 sq. ft	Yes
3	Dining Area	13'10" x 18'0"	218 sq. ft	Yes
4	Hall	15'6" x 9'2"	80 sq. ft	Yes
5	Hall	3'7" x 6'5"	23 sq. ft	Yes
6	Kitchen	17'8" x 11'11"	194 sq. ft	Yes
7	Primary Bedroom	14'0" x 13'7"	190 sq. ft	Yes
8	Foyer	5'2" x 13'5"	69 sq. ft	Yes
9	Garage	22'5" x 21'1"	429 sq. ft	No
10	Bedroom	9'10" x 13'1"	122 sq. ft	Yes
11	Living Room	12'6" x 24'10"	302 sq. ft	Yes

Scan captured on Wed, 08 May 2024 19:00:55 GMT

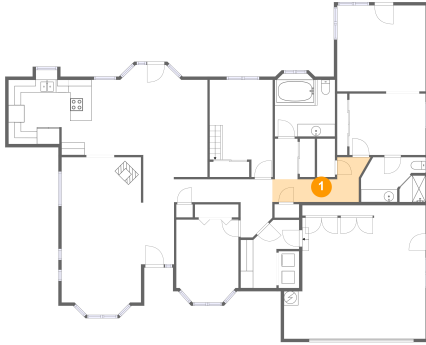
Information is calculated by CubiCasa technology; deemed highly reliable but not guaranteed.

**4652 Columbine Drive, Redding, Shasta County,
California, United States, 96002**

#	Room name	Dimensions	Area (sqft)	Counted as Living Area
12	Bedroom	10'0" x 15'4"	135 sq. ft	Yes
13	Hall	9'3" x 10'9"	66 sq. ft	Yes
14	Bath	10'3" x 7'1"	68 sq. ft	Yes
15	Room	12'0" x 9'8"	117 sq. ft	Yes

4652 Columbine Drive, Redding, Shasta County, California, United States, 96002

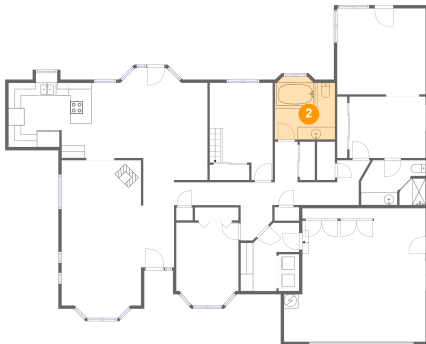
1 Floor 1 - Hall



Dimensions: 13'8" x 7'1"
Area: 64 sq. ft
Counted as Living Area:
Yes

Heated: Yes
Finished: Yes
Enclosed: Yes
Contiguous:
Yes
Permitted: Yes
Wet Space: No
Addition: No
Conversion: No

2 Floor 1 - Bath

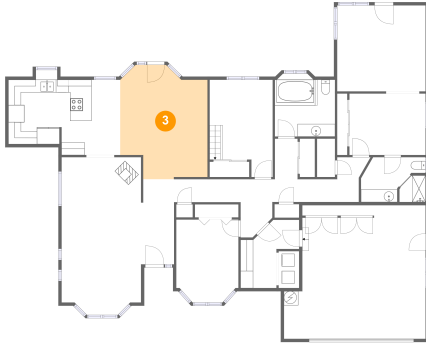


Dimensions: 9'6" x 9'11"
Area: 90 sq. ft
Counted as Living Area:
Yes

Heated: Yes
Finished: Yes
Enclosed: Yes
Contiguous:
Yes
Permitted: Yes
Wet Space: Yes
Addition: No
Conversion: No

4652 Columbine Drive, Redding, Shasta County, California, United States, 96002

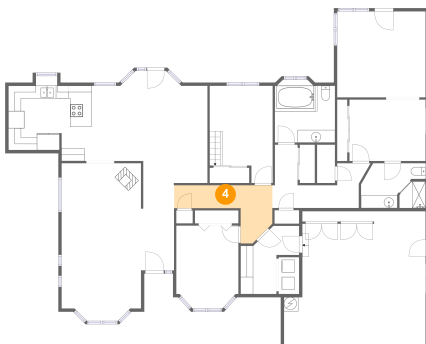
3 Floor 1 - Dining Area



Dimensions: 13'10" x 18'0"
Area: 218 sq. ft
Counted as Living Area:
Yes

Heated: Yes
Finished: Yes
Enclosed: Yes
Contiguous:
Yes
Permitted: Yes
Wet Space: No
Addition: No
Conversion: No

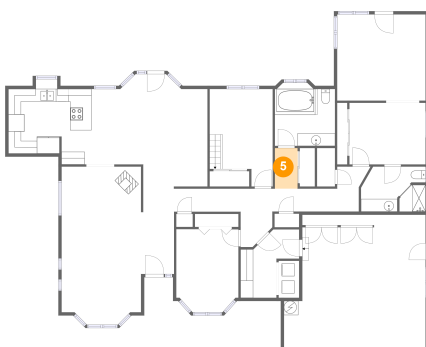
4 Floor 1 - Hall



Dimensions: 15'6" x 9'2"
Area: 80 sq. ft
Counted as Living Area:
Yes

Heated: Yes
Finished: Yes
Enclosed: Yes
Contiguous:
Yes
Permitted: Yes
Wet Space: No
Addition: No
Conversion: No

5 Floor 1 - Hall

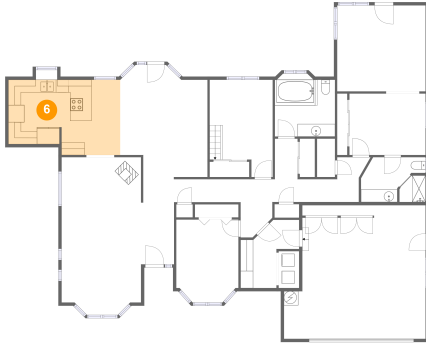


Dimensions: 3'7" x 6'5"
Area: 23 sq. ft
Counted as Living Area:
Yes

Heated: Yes
Finished: Yes
Enclosed: Yes
Contiguous:
Yes
Permitted: Yes
Wet Space: No
Addition: No
Conversion: No

4652 Columbine Drive, Redding, Shasta County, California, United States, 96002

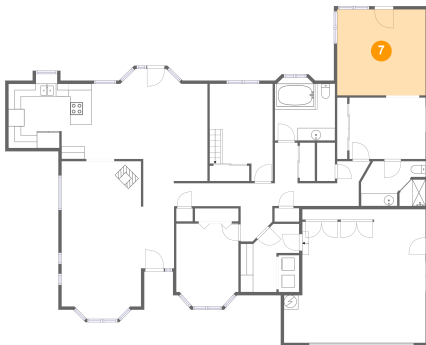
6 Floor 1 - Kitchen



Dimensions: 17'8" x 11'11"
Area: 194 sq. ft
Counted as Living Area:
Yes

Heated: Yes
Finished: Yes
Enclosed: Yes
Contiguous:
Yes
Permitted: Yes
Wet Space: No
Addition: No
Conversion: No

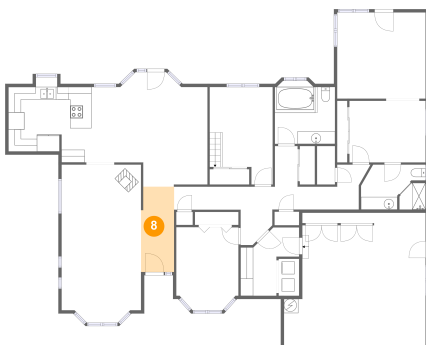
7 Floor 1 - Primary Bedroom



Dimensions: 14'0" x 13'7"
Area: 190 sq. ft
Counted as Living Area:
Yes

Heated: Yes
Finished: Yes
Enclosed: Yes
Contiguous:
Yes
Permitted: Yes
Wet Space: No
Addition: No
Conversion: No

8 Floor 1 - Foyer

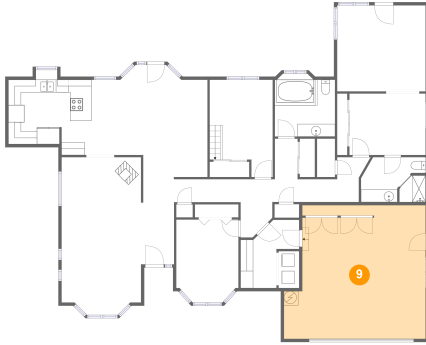


Dimensions: 5'2" x 13'5"
Area: 69 sq. ft
Counted as Living Area:
Yes

Heated: Yes
Finished: Yes
Enclosed: Yes
Contiguous:
Yes
Permitted: Yes
Wet Space: No
Addition: No
Conversion: No

4652 Columbine Drive, Redding, Shasta County, California, United States, 96002

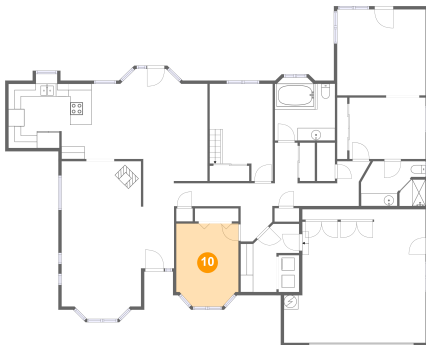
9 Floor 1 - Garage



Dimensions: 22'5" x 21'1"
Area: 429 sq. ft
Counted as Living Area: No

Heated: No
Finished: No
Enclosed: Yes
Contiguous: Yes
Permitted: Yes
Wet Space: No
Addition: No
Conversion: No

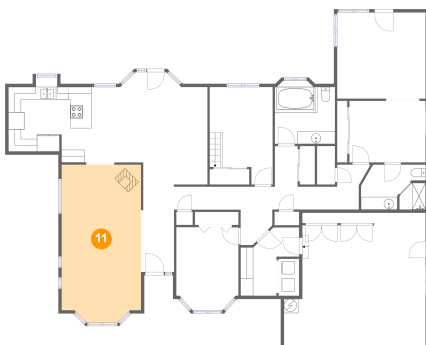
10 Floor 1 - Bedroom



Dimensions: 9'10" x 13'1"
Area: 122 sq. ft
Counted as Living Area: Yes

Heated: Yes
Finished: Yes
Enclosed: Yes
Contiguous: Yes
Permitted: Yes
Wet Space: No
Addition: No
Conversion: No

11 Floor 1 - Living Room



Dimensions: 12'6" x 24'10"
Area: 302 sq. ft
Counted as Living Area: Yes

Heated: Yes
Finished: Yes
Enclosed: Yes
Contiguous: Yes
Permitted: Yes
Wet Space: No
Addition: No
Conversion: No

4652 Columbine Drive, Redding, Shasta County, California, United States, 96002

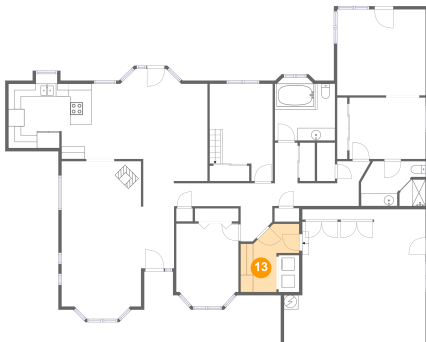
12 Floor 1 - Bedroom



Dimensions: 10'0" x 15'4"
Area: 135 sq. ft
Counted as Living Area:
Yes

Heated: Yes
Finished: Yes
Enclosed: Yes
Contiguous:
Yes
Permitted: Yes
Wet Space: No
Addition: No
Conversion: No

13 Floor 1 - Hall



Dimensions: 9'3" x 10'9"
Area: 66 sq. ft
Counted as Living Area:
Yes

Heated: Yes
Finished: Yes
Enclosed: Yes
Contiguous:
Yes
Permitted: Yes
Wet Space: No
Addition: No
Conversion: No

14 Floor 1 - Bath

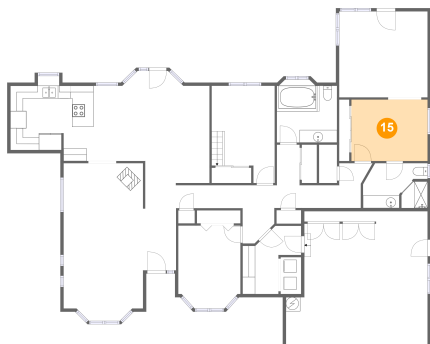


Dimensions: 10'3" x 7'1"
Area: 68 sq. ft
Counted as Living Area:
Yes

Heated: Yes
Finished: Yes
Enclosed: Yes
Contiguous:
Yes
Permitted: Yes
Wet Space: Yes
Addition: No
Conversion: No

4652 Columbine Drive, Redding, Shasta County, California, United States, 96002

15 Floor 1 - Room



Dimensions: 12'0" x 9'8"
Area: 117 sq. ft
Counted as Living Area:
Yes

Heated: Yes
Finished: Yes
Enclosed: Yes
Contiguous:
Yes
Permitted: Yes
Wet Space: No
Addition: No
Conversion: No