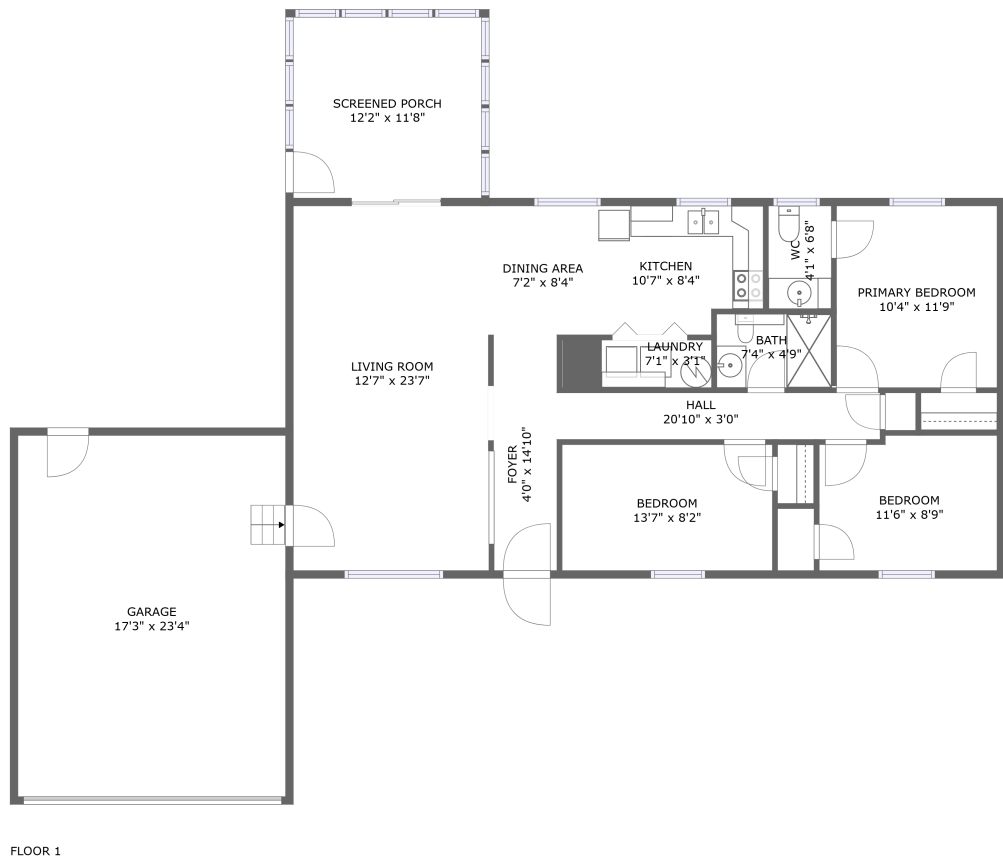


Home report

11900 James River Drive, North Prince George, Prince George County, Virginia, United States, 23860



Total Area: 1140 sq. ft

Floor 1: 1140 sq. ft

Excluded: Garage 440 sq. ft, Outdoor Porch Screen 160 sq. ft

Property summary

 **1** Floors

 **3** Bedrooms

 **1** Bathrooms

Home report

**11900 James River Drive, North Prince George, Prince George
County, Virginia, United States, 23860**



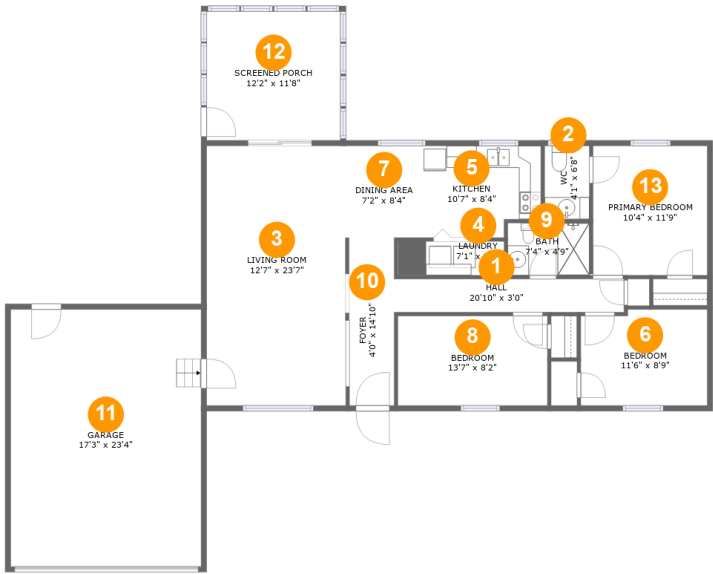
1
Half baths



1
Garages

Home report

11900 James River Drive, North Prince George, Prince George County, Virginia, United States, 23860



Room dimensions

Floor 1 Total:1140sqft Excluded: 600sqft

#		Max Dimensions	sqft	Included
1	Hall	20'10" x 3'0"	63 sq. ft	Yes
2	WC	4'1" x 6'8"	27 sq. ft	Yes
3	Living Room	12'7" x 23'7"	299 sq. ft	Yes
4	Laundry	7'1" x 3'1"	30 sq. ft	Yes
5	Kitchen	10'7" x 8'4"	83 sq. ft	Yes
6	Bedroom	11'6" x 8'9"	98 sq. ft	Yes
7	Dining Area	7'2" x 8'4"	61 sq. ft	Yes
8	Bedroom	13'7" x 8'2"	110 sq. ft	Yes
9	Bath	7'4" x 4'9"	35 sq. ft	Yes
10	Foyer	4'0" x 14'10"	60 sq. ft	Yes
11	Garage	17'3" x 23'4"	403 sq. ft	No

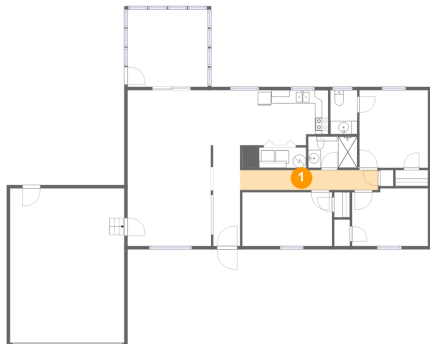
Home report

11900 James River Drive, North Prince George, Prince George
County, Virginia, United States, 23860

#		Max Dimensions	sqft	Included
12	Screened Porch	12'2" x 11'8"	142 sq. ft	No
13	Primary Bedroom	10'4" x 11'9"	122 sq. ft	Yes

11900 James River Drive, North Prince George, Prince George
County, Virginia, United States, 23860

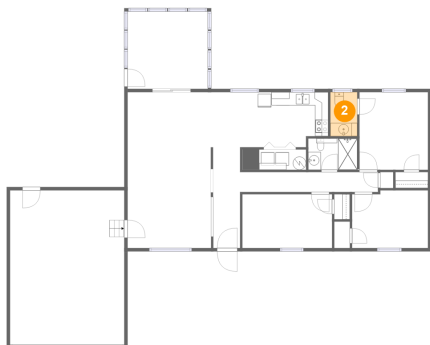
1 Floor 1 - Hall



Max Dimensions: 20'10" x 3'0"
Calculated Area: 63 sq. ft
Included: Yes

Heated: Yes
Finished: Yes
Enclosed: Yes
Contiguous: Yes
Permitted: Yes
Wet space: No
Addition: No
Conversion: No

2 Floor 1 - WC

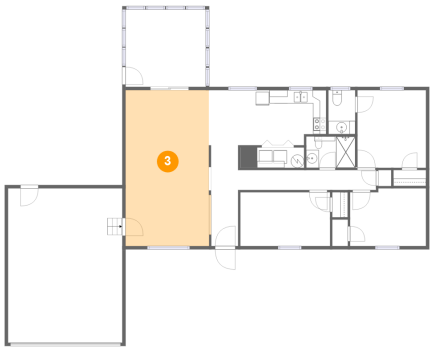


Max Dimensions: 4'1" x 6'8"
Calculated Area: 27 sq. ft
Included: Yes

Heated: Yes
Finished: Yes
Enclosed: Yes
Contiguous: Yes
Permitted: Yes
Wet space: Yes
Addition: No
Conversion: No

11900 James River Drive, North Prince George, Prince George
County, Virginia, United States, 23860

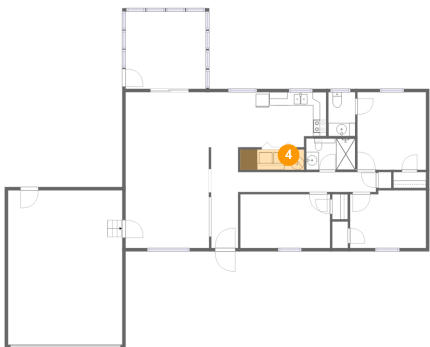
3 Floor 1 - Living Room



Max Dimensions: 12'7" x 23'7"
Calculated Area: 299 sq. ft
Included: Yes

Heated: Yes
Finished: Yes
Enclosed: Yes
Contiguous: Yes
Permitted: Yes
Wet space: No
Addition: No
Conversion: No

4 Floor 1 - Laundry



Max Dimensions: 7'1" x 3'1"
Calculated Area: 30 sq. ft
Included: Yes

Heated: Yes
Finished: Yes
Enclosed: Yes
Contiguous: Yes
Permitted: Yes
Wet space: No
Addition: No
Conversion: No

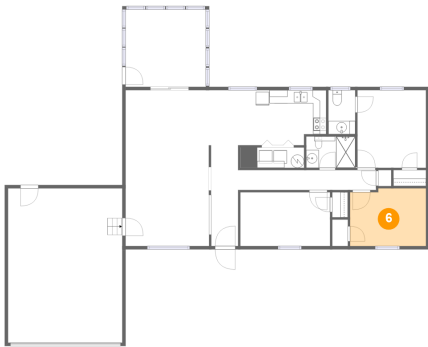
5 Floor 1 - Kitchen



Max Dimensions: 10'7" x 8'4"
Calculated Area: 83 sq. ft
Included: Yes

Heated: Yes
Finished: Yes
Enclosed: Yes
Contiguous: Yes
Permitted: Yes
Wet space: No
Addition: No
Conversion: No

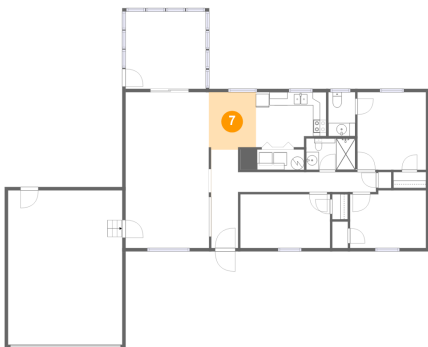
6 Floor 1 - Bedroom



Max Dimensions: 11'6" x 8'9"
Calculated Area: 98 sq. ft
Included: Yes

Heated: Yes
Finished: Yes
Enclosed: Yes
Contiguous: Yes
Permitted: Yes
Wet space: No
Addition: No
Conversion: No

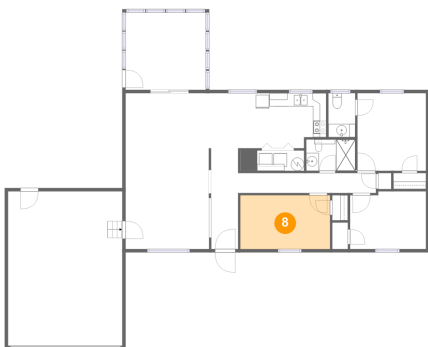
7 Floor 1 - Dining Area



Max Dimensions: 7'2" x 8'4"
Calculated Area: 61 sq. ft
Included: Yes

Heated: Yes
Finished: Yes
Enclosed: Yes
Contiguous: Yes
Permitted: Yes
Wet space: No
Addition: No
Conversion: No

8 Floor 1 - Bedroom

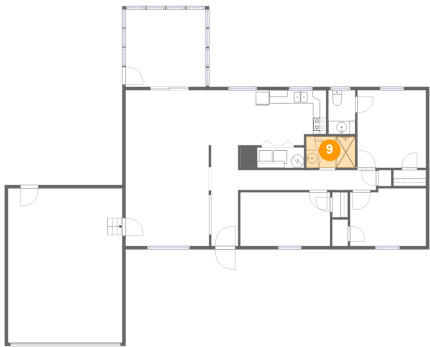


Max Dimensions: 13'7" x 8'2"
Calculated Area: 110 sq. ft
Included: Yes

Heated: Yes
Finished: Yes
Enclosed: Yes
Contiguous: Yes
Permitted: Yes
Wet space: No
Addition: No
Conversion: No

11900 James River Drive, North Prince George, Prince George County, Virginia, United States, 23860

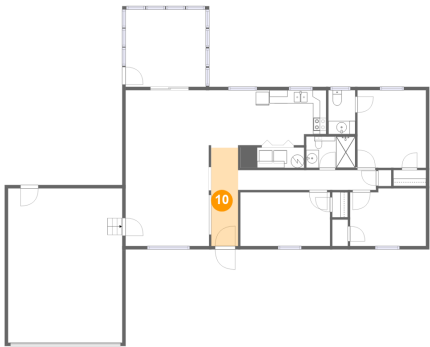
9 Floor 1 - Bath



Max Dimensions: 7'4" x 4'9"
Calculated Area: 35 sq. ft
Included: Yes

Heated: Yes
Finished: Yes
Enclosed: Yes
Contiguous: Yes
Permitted: Yes
Wet space: Yes
Addition: No
Conversion: No

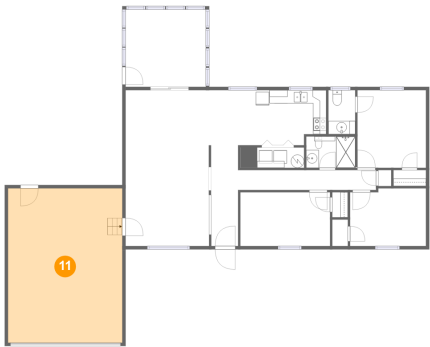
10 Floor 1 - Foyer



Max Dimensions: 4'0" x 14'10"
Calculated Area: 60 sq. ft
Included: Yes

Heated: Yes
Finished: Yes
Enclosed: Yes
Contiguous: Yes
Permitted: Yes
Wet space: No
Addition: No
Conversion: No

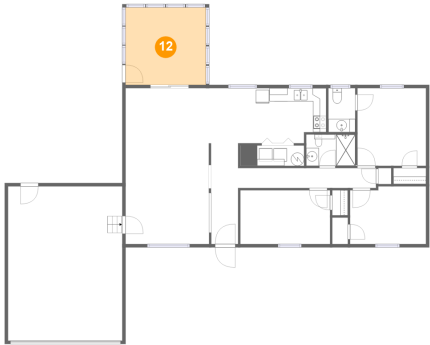
11 Floor 1 - Garage



Max Dimensions: 17'3" x 23'4"
Calculated Area: 403 sq. ft
Included: No

Heated: No
Finished: No
Enclosed: Yes
Contiguous: Yes
Permitted: Yes
Wet space: No
Addition: No
Conversion: No

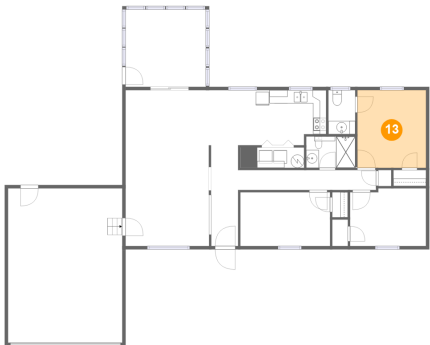
12 Floor 1 - Screened Porch



Max Dimensions: 12'2" x 11'8"
Calculated Area: 142 sq. ft
Included: No

Heated: No
Finished: Yes
Enclosed: No
Contiguous: Yes
Permitted: Yes
Wet space: No
Addition: No
Conversion: No

13 Floor 1 - Primary Bedroom



Max Dimensions: 10'4" x 11'9"
Calculated Area: 122 sq. ft
Included: Yes

Heated: Yes
Finished: Yes
Enclosed: Yes
Contiguous: Yes
Permitted: Yes
Wet space: No
Addition: No
Conversion: No