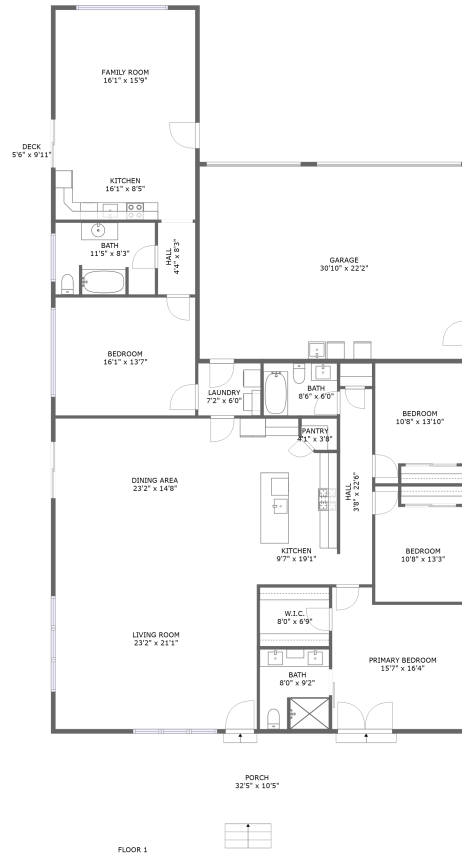



1892 South Obenchain Road, Eagle Point, Oregon 97524, United States



Property summary

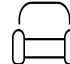
 **1** Garages

 **4** Bedrooms

 **3** Bathrooms

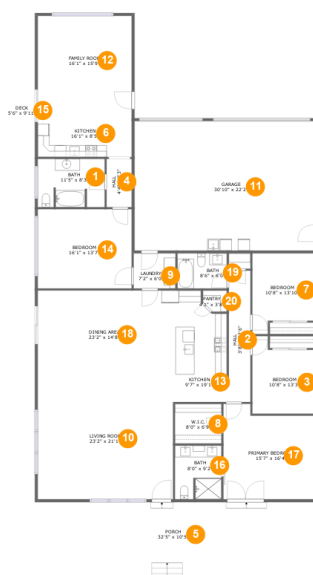
 **0** Half baths

 **1** Floors

 **2,777**
Gross living
area sqft

 **3,877**
Total sqft

1892 South Obenchain Road, Eagle Point, Oregon 97524, United States



Room dimensions

Floor 1

Total sqft: 3877 Living area: 2777

#		Dimensions	sqft	Counted as living area
1	Bath	11'5" x 8'3"	92 sq. ft	Yes
2	Hall	3'8" x 22'6"	83 sq. ft	Yes
3	Bedroom	10'8" x 13'3"	122 sq. ft	Yes
4	Hall	4'4" x 8'3"	35 sq. ft	Yes
5	Porch	32'5" x 10'5"	336 sq. ft	No
6	Kitchen	16'1" x 8'5"	135 sq. ft	Yes
7	Bedroom	10'8" x 13'10"	128 sq. ft	Yes
8	W.I.C.	8'0" x 6'9"	54 sq. ft	Yes
9	Laundry	7'2" x 6'0"	43 sq. ft	Yes
10	Living Room	23'2" x 21'1"	488 sq. ft	Yes
11	Garage	30'10" x 22'2"	682 sq. ft	No

**1892 South Obenchain Road, Eagle Point, Oregon
97524, United States**

#		Dimensions	sqft	Counted as living area
12	Family Room	16'1" x 15'9"	253 sq. ft	Yes
13	Kitchen	9'7" x 19'1"	161 sq. ft	Yes
14	Bedroom	16'1" x 13'7"	218 sq. ft	Yes
15	Deck	5'6" x 9'11"	55 sq. ft	No
16	Bath	8'0" x 9'2"	72 sq. ft	Yes
17	Primary Bedroom	15'7" x 16'4"	232 sq. ft	Yes
18	Dining Area	23'2" x 14'8"	339 sq. ft	Yes
19	Bath	8'6" x 6'0"	51 sq. ft	Yes
20	Pantry	4'1" x 3'8"	14 sq. ft	Yes

**1892 South Obenchain Road, Eagle Point, Oregon
97524, United States**

1 Floor 1 - Bath



Dimensions: 11'5" x 8'3"
Area: 92 sq. ft
Counted as living area: Yes

Heated: Yes
Finished: Yes
Enclosed: Yes
Contiguous: Yes
Permitted: Yes
Wet space: Yes
Addition: No
Conversion: No

2 Floor 1 - Hall



Dimensions: 3'8" x 22'6"
Area: 83 sq. ft
Counted as living area: Yes

Heated: Yes
Finished: Yes
Enclosed: Yes
Contiguous: Yes
Permitted: Yes
Wet space: No
Addition: No
Conversion: No

**1892 South Obenchain Road, Eagle Point, Oregon
97524, United States**

3 Floor 1 - Bedroom



Dimensions: 10'8" x 13'3"
Area: 122 sq. ft
Counted as living area: Yes

Heated: Yes
Finished: Yes
Enclosed: Yes
Contiguous: Yes
Permitted: Yes
Wet space: No
Addition: No
Conversion: No

4 Floor 1 - Hall



Dimensions: 4'4" x 8'3"
Area: 35 sq. ft
Counted as living area: Yes

Heated: Yes
Finished: Yes
Enclosed: Yes
Contiguous: Yes
Permitted: Yes
Wet space: No
Addition: No
Conversion: No

5 Floor 1 - Porch



Dimensions: 32'5" x 10'5"
Area: 336 sq. ft
Counted as living area: No

Heated: No
Finished: Yes
Enclosed: No
Contiguous: Yes
Permitted: Yes
Wet space: No
Addition: No
Conversion: No

1892 South Obenchain Road, Eagle Point, Oregon
97524, United States

6 Floor 1 - Kitchen



Dimensions: 16'1" x 8'5"
Area: 135 sq. ft
Counted as living area: Yes

Heated: Yes
Finished: Yes
Enclosed: Yes
Contiguous: Yes
Permitted: Yes
Wet space: No
Addition: No
Conversion: No

7 Floor 1 - Bedroom



Dimensions: 10'8" x 13'10"
Area: 128 sq. ft
Counted as living area: Yes

Heated: Yes
Finished: Yes
Enclosed: Yes
Contiguous: Yes
Permitted: Yes
Wet space: No
Addition: No
Conversion: No

8 Floor 1 - W.I.C.



Dimensions: 8'0" x 6'9"
Area: 54 sq. ft
Counted as living area: Yes

Heated: Yes
Finished: Yes
Enclosed: Yes
Contiguous: Yes
Permitted: Yes
Wet space: No
Addition: No
Conversion: No

**1892 South Obenchain Road, Eagle Point, Oregon
97524, United States**

9 Floor 1 - Laundry



Dimensions: 7'2" x 6'0"
Area: 43 sq. ft
Counted as living area: Yes

Heated: Yes
Finished: Yes
Enclosed: Yes
Contiguous: Yes
Permitted: Yes
Wet space: No
Addition: No
Conversion: No

10 Floor 1 - Living Room



Dimensions: 23'2" x 21'1"
Area: 488 sq. ft
Counted as living area: Yes

Heated: Yes
Finished: Yes
Enclosed: Yes
Contiguous: Yes
Permitted: Yes
Wet space: No
Addition: No
Conversion: No

11 Floor 1 - Garage



Dimensions: 30'10" x 22'2"
Area: 682 sq. ft
Counted as living area: No

Heated: No
Finished: No
Enclosed: Yes
Contiguous: Yes
Permitted: Yes
Wet space: No
Addition: No
Conversion: No

**1892 South Obenchain Road, Eagle Point, Oregon
97524, United States**

12 Floor 1 - Family Room



Dimensions: 16'1" x 15'9"
Area: 253 sq. ft
Counted as living area: Yes

Heated: Yes
Finished: Yes
Enclosed: Yes
Contiguous: Yes
Permitted: Yes
Wet space: No
Addition: No
Conversion: No

13 Floor 1 - Kitchen



Dimensions: 9'7" x 19'1"
Area: 161 sq. ft
Counted as living area: Yes

Heated: Yes
Finished: Yes
Enclosed: Yes
Contiguous: Yes
Permitted: Yes
Wet space: No
Addition: No
Conversion: No

14 Floor 1 - Bedroom



Dimensions: 16'1" x 13'7"
Area: 218 sq. ft
Counted as living area: Yes

Heated: Yes
Finished: Yes
Enclosed: Yes
Contiguous: Yes
Permitted: Yes
Wet space: No
Addition: No
Conversion: No

1892 South Obenchain Road, Eagle Point, Oregon
97524, United States

15 Floor 1 - Deck



Dimensions: 5'6" x 9'11"
Area: 55 sq. ft
Counted as living area: No

Heated: No
Finished: Yes
Enclosed: No
Contiguous: Yes
Permitted: Yes
Wet space: No
Addition: No
Conversion: No

16 Floor 1 - Bath



Dimensions: 8'0" x 9'2"
Area: 72 sq. ft
Counted as living area: Yes

Heated: Yes
Finished: Yes
Enclosed: Yes
Contiguous: Yes
Permitted: Yes
Wet space: Yes
Addition: No
Conversion: No

17 Floor 1 - Primary Bedroom



Dimensions: 15'7" x 16'4"
Area: 232 sq. ft
Counted as living area: Yes

Heated: Yes
Finished: Yes
Enclosed: Yes
Contiguous: Yes
Permitted: Yes
Wet space: No
Addition: No
Conversion: No

**1892 South Obenchain Road, Eagle Point, Oregon
97524, United States**

18 Floor 1 - Dining Area



Dimensions: 23'2" x 14'8"
Area: 339 sq. ft
Counted as living area: Yes

Heated: Yes
Finished: Yes
Enclosed: Yes
Contiguous: Yes
Permitted: Yes
Wet space: No
Addition: No
Conversion: No

19 Floor 1 - Bath



Dimensions: 8'6" x 6'0"
Area: 51 sq. ft
Counted as living area: Yes

Heated: Yes
Finished: Yes
Enclosed: Yes
Contiguous: Yes
Permitted: Yes
Wet space: Yes
Addition: No
Conversion: No

20 Floor 1 - Pantry



Dimensions: 4'1" x 3'8"
Area: 14 sq. ft
Counted as living area: Yes

Heated: Yes
Finished: Yes
Enclosed: Yes
Contiguous: Yes
Permitted: Yes
Wet space: No
Addition: No
Conversion: No