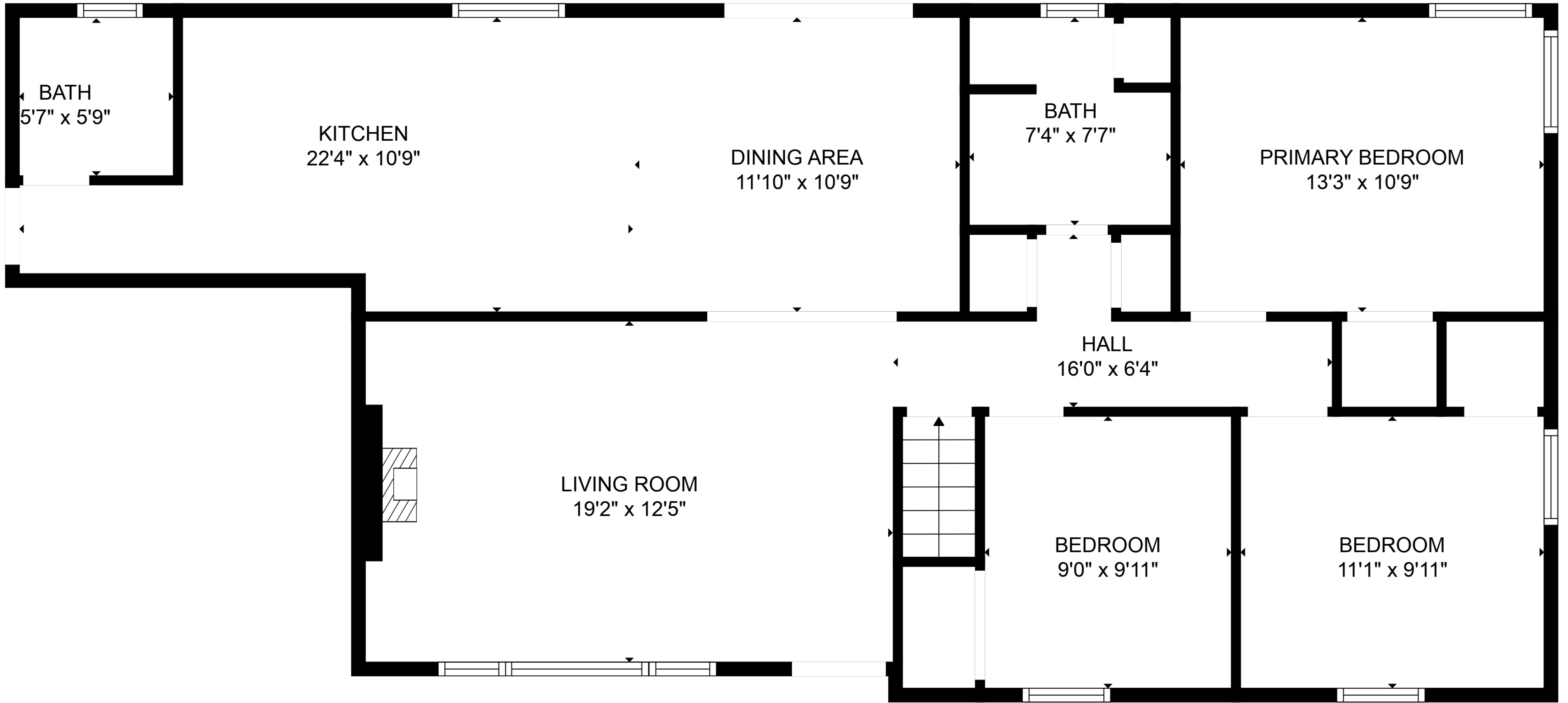
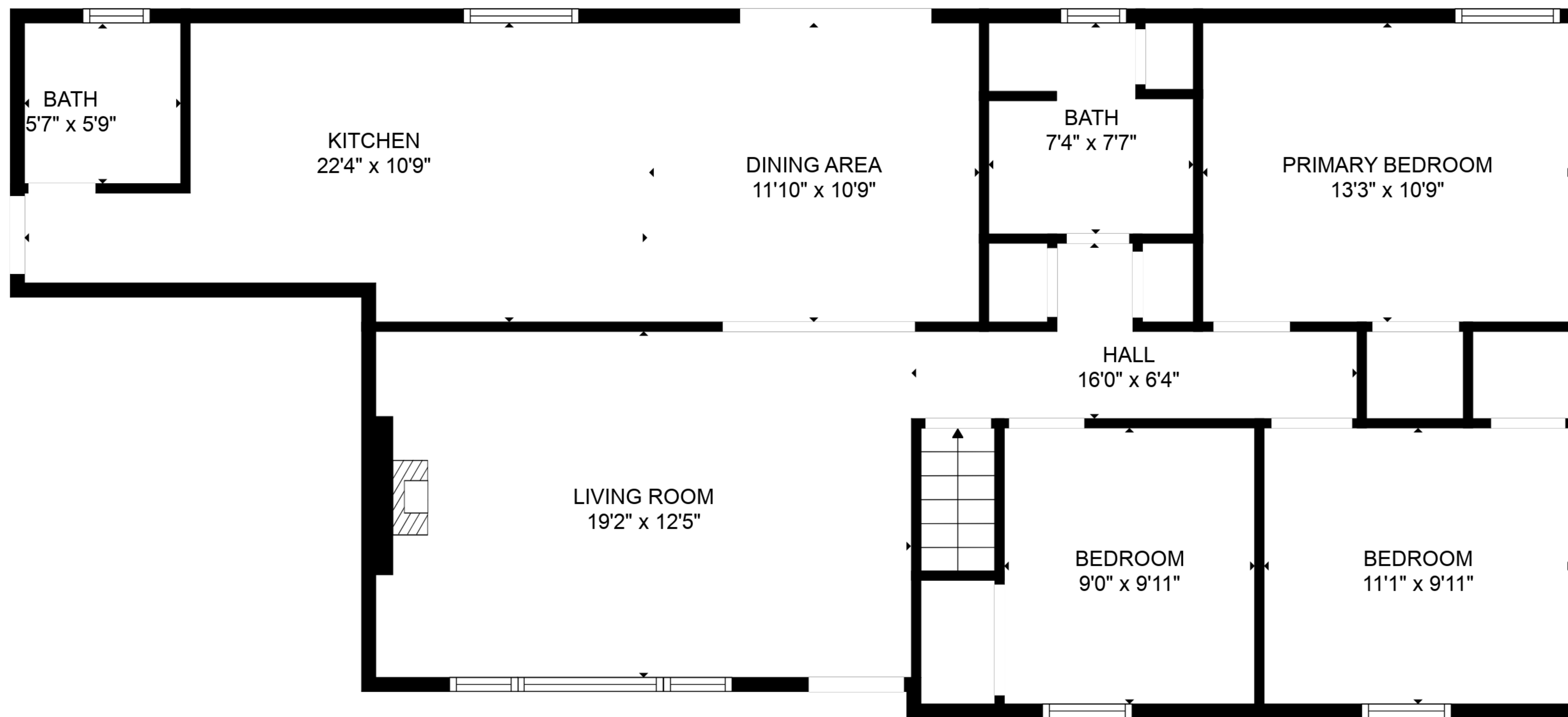


UTILITY  
25'11" x 23'5"

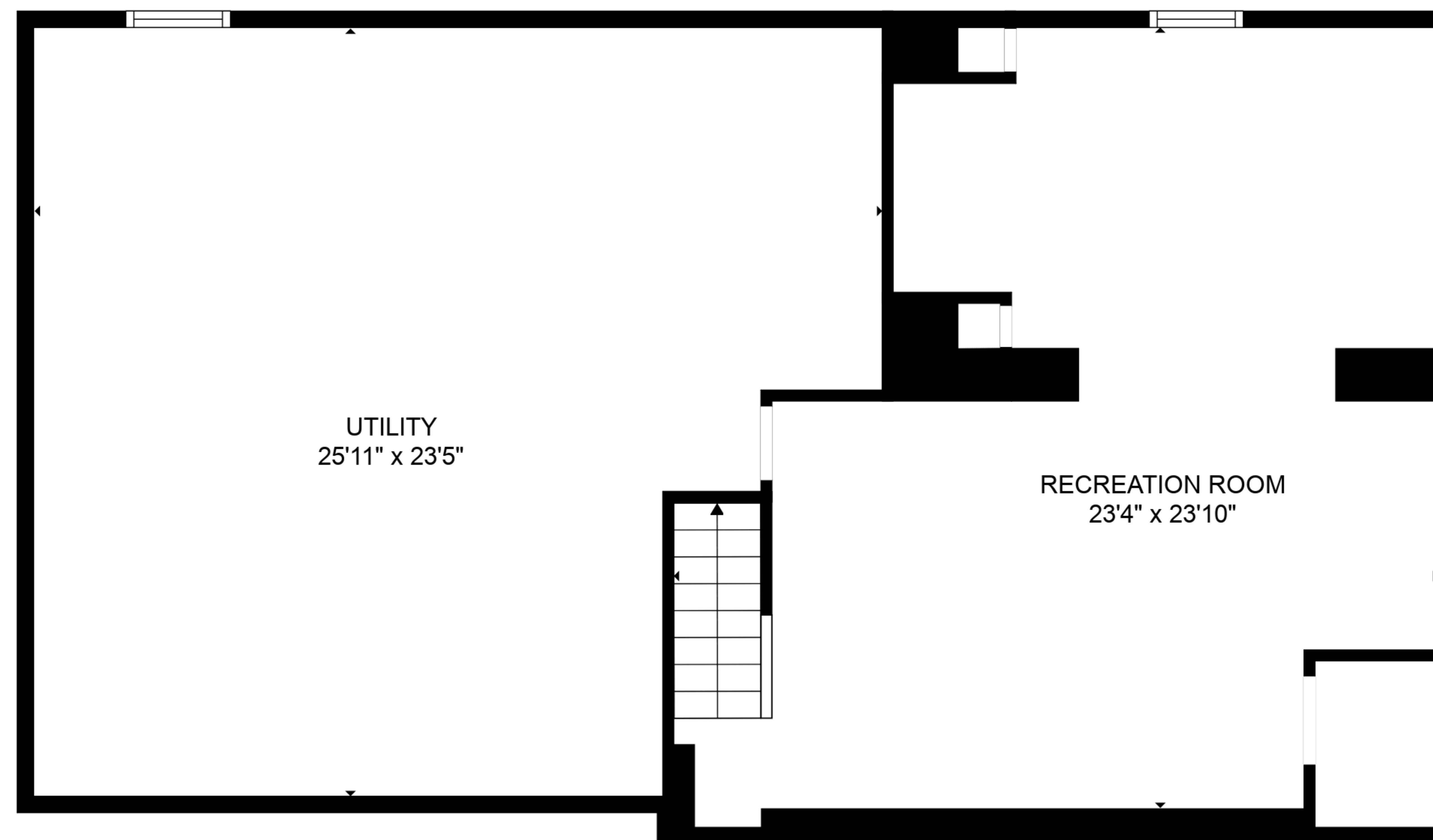
The floor plan shows a Utility room on the left and a Recreation room on the right. A staircase is located between them. The Utility room is a large rectangular space. The Recreation room is a large rectangular space with a smaller rectangular area at the bottom right. The staircase is a narrow vertical space with a grid pattern. The walls are thick black lines. There are several windows and doors indicated by small rectangles and arrows. The Utility room has a window on the top wall and a door on the right wall. The Recreation room has a window on the top wall, a door on the right wall, and a window on the bottom wall. The staircase has a door on the left wall and a window on the right wall.

RECREATION ROOM  
23'4" x 23'10"





FLOOR 2



FLOOR 1