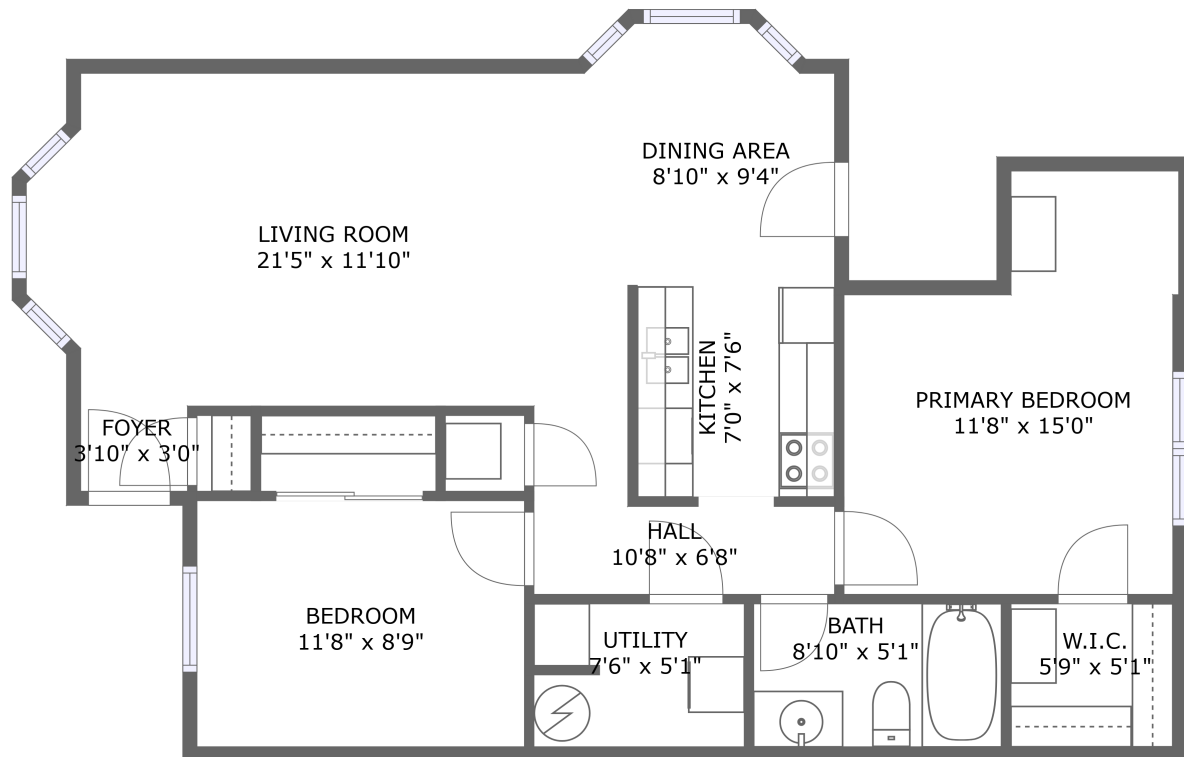



# 1001 Provo Ct NE, Albuquerque, NM, US




FLOOR 1

## Property summary


 **0** Garages


 **2** Bedrooms

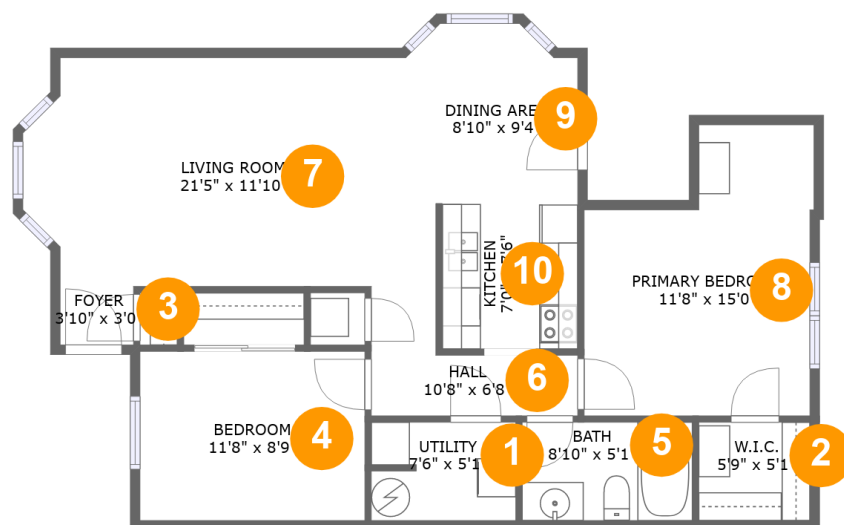
 **1** Bathrooms

 **0** Half baths

 **1** Floors

 **916** Gross living area sqft

 **916** Total sqft

**1001 Provo Ct NE, Albuquerque, NM, US****Room dimensions**

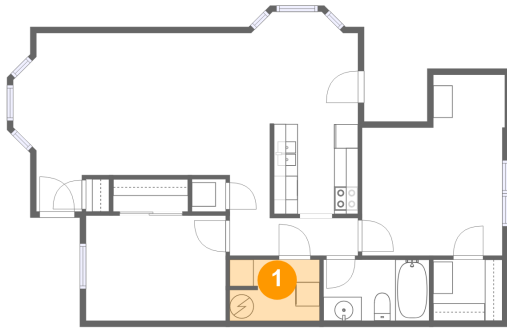
Floor 1

Total sqft: 916 Living area: 916

#		Dimensions	sqft	Counted as living area
1	Utility	7'6" x 5'1"	37 sq. ft	Yes
2	W.I.C.	5'9" x 5'1"	29 sq. ft	Yes
3	Foyer	3'10" x 3'0"	12 sq. ft	Yes
4	Bedroom	11'8" x 8'9"	102 sq. ft	Yes
5	Bath	8'10" x 5'1"	45 sq. ft	Yes
6	Hall	10'8" x 6'8"	45 sq. ft	Yes
7	Living Room	21'5" x 11'10"	236 sq. ft	Yes
8	Primary Bedroom	11'8" x 15'0"	151 sq. ft	Yes
9	Dining Area	8'10" x 9'4"	72 sq. ft	Yes
10	Kitchen	7'0" x 7'6"	52 sq. ft	Yes

# 1001 Provo Ct NE, Albuquerque, NM, US

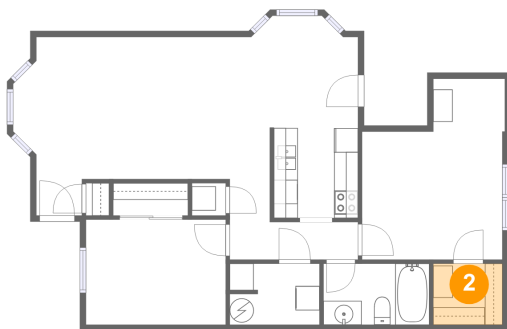
## 1 Floor 1 - Utility



Dimensions: 7'6" x 5'1"  
Area: 37 sq. ft  
Counted as living area: Yes

Heated: Yes  
Finished: Yes  
Enclosed: Yes  
Contiguous: Yes  
Permitted: Yes  
Wet space: No  
Addition: No  
Conversion: No

## 2 Floor 1 - W.I.C.

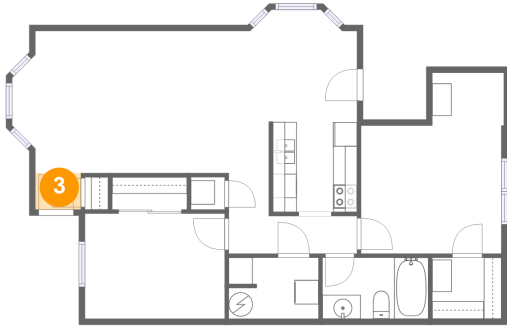


Dimensions: 5'9" x 5'1"  
Area: 29 sq. ft  
Counted as living area: Yes

Heated: Yes  
Finished: Yes  
Enclosed: Yes  
Contiguous: Yes  
Permitted: Yes  
Wet space: No  
Addition: No  
Conversion: No

# 1001 Provo Ct NE, Albuquerque, NM, US

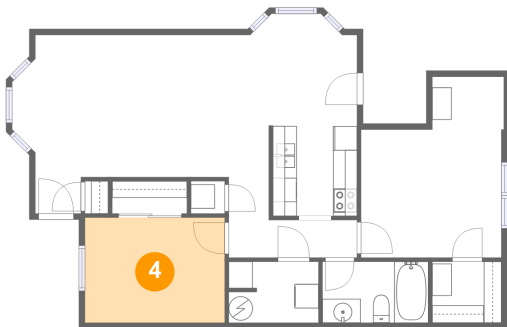
## 3 Floor 1 - Foyer



Dimensions: 3'10" x 3'0"  
Area: 12 sq. ft  
Counted as living area: Yes

Heated: Yes  
Finished: Yes  
Enclosed: Yes  
Contiguous: Yes  
Permitted: Yes  
Wet space: No  
Addition: No  
Conversion: No

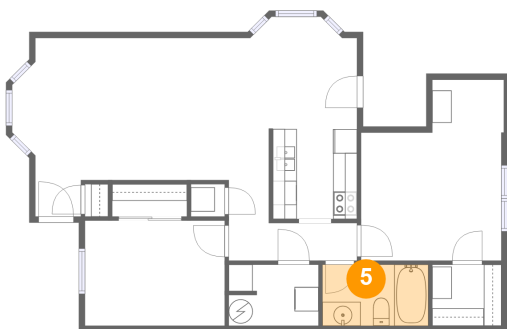
## 4 Floor 1 - Bedroom



Dimensions: 11'8" x 8'9"  
Area: 102 sq. ft  
Counted as living area: Yes

Heated: Yes  
Finished: Yes  
Enclosed: Yes  
Contiguous: Yes  
Permitted: Yes  
Wet space: No  
Addition: No  
Conversion: No

## 5 Floor 1 - Bath

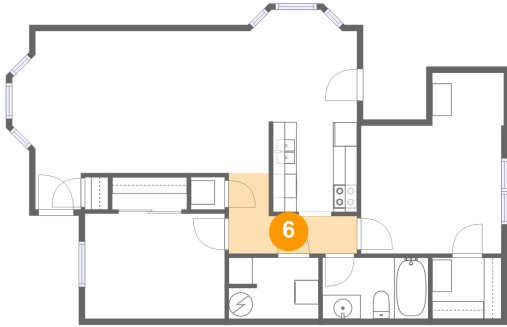


Dimensions: 8'10" x 5'1"  
Area: 45 sq. ft  
Counted as living area: Yes

Heated: Yes  
Finished: Yes  
Enclosed: Yes  
Contiguous: Yes  
Permitted: Yes  
Wet space: Yes  
Addition: No  
Conversion: No

# 1001 Provo Ct NE, Albuquerque, NM, US

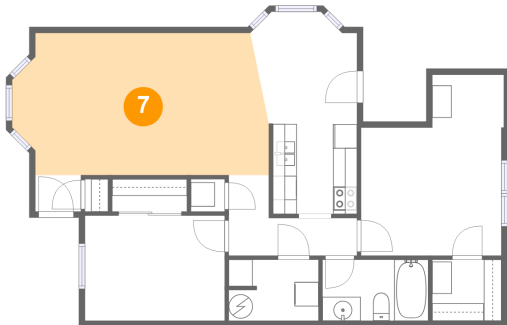
## 6 Floor 1 - Hall



Dimensions: 10'8" x 6'8"  
Area: 45 sq. ft  
Counted as living area: Yes

Heated: Yes  
Finished: Yes  
Enclosed: Yes  
Contiguous: Yes  
Permitted: Yes  
Wet space: No  
Addition: No  
Conversion: No

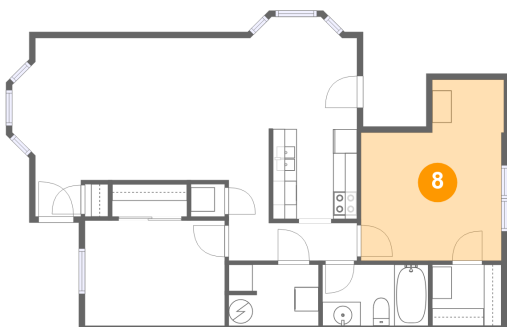
## 7 Floor 1 - Living Room



Dimensions: 21'5" x 11'10"  
Area: 236 sq. ft  
Counted as living area: Yes

Heated: Yes  
Finished: Yes  
Enclosed: Yes  
Contiguous: Yes  
Permitted: Yes  
Wet space: No  
Addition: No  
Conversion: No

## 8 Floor 1 - Primary Bedroom

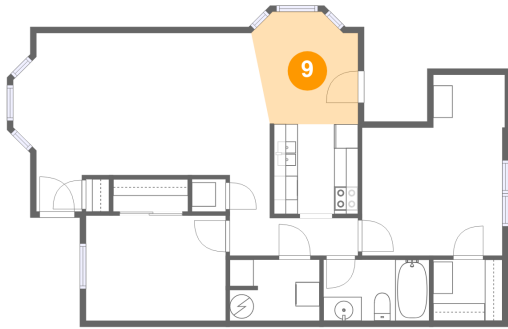


Dimensions: 11'8" x 15'0"  
Area: 151 sq. ft  
Counted as living area: Yes

Heated: Yes  
Finished: Yes  
Enclosed: Yes  
Contiguous: Yes  
Permitted: Yes  
Wet space: No  
Addition: No  
Conversion: No

# 1001 Provo Ct NE, Albuquerque, NM, US

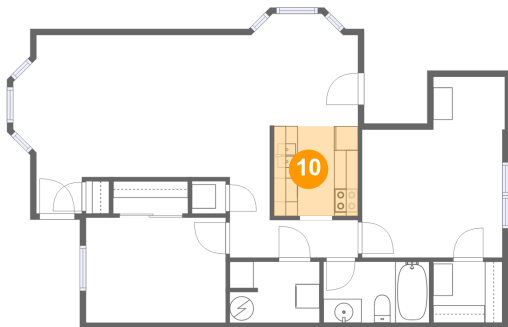
## 9 Floor 1 - Dining Area



Dimensions: 8'10" x 9'4"  
Area: 72 sq. ft  
Counted as living area: Yes

Heated: Yes  
Finished: Yes  
Enclosed: Yes  
Contiguous: Yes  
Permitted: Yes  
Wet space: No  
Addition: No  
Conversion: No

## 10 Floor 1 - Kitchen



Dimensions: 7'0" x 7'6"  
Area: 52 sq. ft  
Counted as living area: Yes

Heated: Yes  
Finished: Yes  
Enclosed: Yes  
Contiguous: Yes  
Permitted: Yes  
Wet space: No  
Addition: No  
Conversion: No