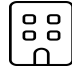


# 126 Azuba Court, Hazel Green, Madison County, Alabama, United States, 35750

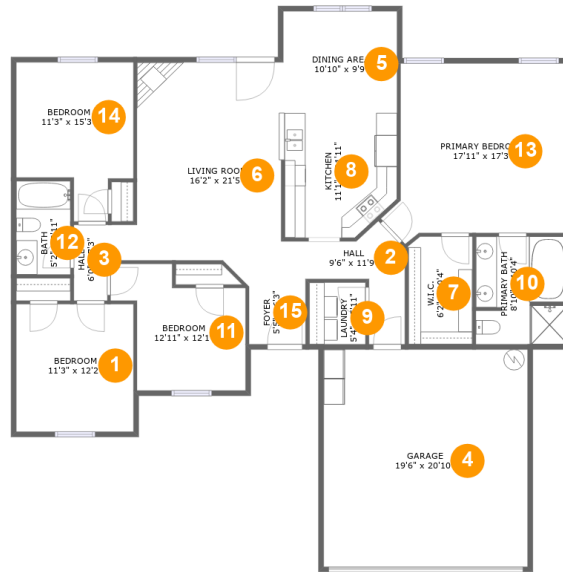


## Property Summary

 **1** garages     **4** bedrooms     **2** bathrooms     **0** half baths

 **1** floors     **1,711** Gross Living Area sqft     **2,148** total sqft

# 126 Azuba Court, Hazel Green, Madison County, Alabama, United States, 35750



## Room Dimensions

Floor 1

Total sqft: 2148

Living area: 1711

#	Room name	Dimensions	Area (sqft)	Counted as Living Area
1	Bedroom	11'3" x 12'2"	137 sq. ft	Yes
2	Hall	9'6" x 11'9"	59 sq. ft	Yes
3	Hall	6'0" x 7'3"	33 sq. ft	Yes
4	Garage	19'6" x 20'10"	406 sq. ft	No
5	Dining Area	10'10" x 9'9"	106 sq. ft	Yes
6	Living Room	16'2" x 21'5"	280 sq. ft	Yes
7	W.i.c.	6'2" x 10'4"	63 sq. ft	Yes
8	Kitchen	11'1" x 11'11"	122 sq. ft	Yes
9	Laundry	5'4" x 5'11"	32 sq. ft	Yes
10	Primary Bath	8'10" x 10'4"	89 sq. ft	Yes
11	Bedroom	12'11" x 12'1"	119 sq. ft	Yes

Scan captured on Tue, 03 Sep 2024 19:45:19 GMT

Information is calculated by CubiCasa technology; deemed highly reliable but not guaranteed.

**126 Azuba Court, Hazel Green, Madison County,  
Alabama, United States, 35750**

#	Room name	Dimensions	Area (sqft)	Counted as Living Area
12	Bath	5'2" x 8'11"	46 sq. ft	Yes
13	Primary Bedroom	17'11" x 17'3"	264 sq. ft	Yes
14	Bedroom	11'3" x 15'3"	138 sq. ft	Yes
15	Foyer	5'5" x 6'3"	34 sq. ft	Yes

# 126 Azuba Court, Hazel Green, Madison County, Alabama, United States, 35750

## 1 Floor 1 - Bedroom



**Dimensions:** 11'3" x 12'2"  
**Area:** 137 sq. ft  
**Counted as Living Area:**  
Yes

**Heated:** Yes  
**Finished:** Yes  
**Enclosed:** Yes  
**Contiguous:**  
Yes  
**Permitted:** Yes  
**Wet Space:** No  
**Addition:** No  
**Conversion:** No

## 2 Floor 1 - Hall



**Dimensions:** 9'6" x 11'9"  
**Area:** 59 sq. ft  
**Counted as Living Area:**  
Yes

**Heated:** Yes  
**Finished:** Yes  
**Enclosed:** Yes  
**Contiguous:**  
Yes  
**Permitted:** Yes  
**Wet Space:** No  
**Addition:** No  
**Conversion:** No

# 126 Azuba Court, Hazel Green, Madison County, Alabama, United States, 35750

## 3 Floor 1 - Hall



Dimensions: 6'0" x 7'3"  
Area: 33 sq. ft  
Counted as Living Area: Yes

Heated: Yes  
Finished: Yes  
Enclosed: Yes  
Contiguous: Yes  
Permitted: Yes  
Wet Space: No  
Addition: No  
Conversion: No

## 4 Floor 1 - Garage



Dimensions: 19'6" x 20'10"  
Area: 406 sq. ft  
Counted as Living Area: No

Heated: No  
Finished: No  
Enclosed: Yes  
Contiguous: Yes  
Permitted: Yes  
Wet Space: No  
Addition: No  
Conversion: No

## 5 Floor 1 - Dining Area



Dimensions: 10'10" x 9'9"  
Area: 106 sq. ft  
Counted as Living Area: Yes

Heated: Yes  
Finished: Yes  
Enclosed: Yes  
Contiguous: Yes  
Permitted: Yes  
Wet Space: No  
Addition: No  
Conversion: No

# 126 Azuba Court, Hazel Green, Madison County, Alabama, United States, 35750

## 6 Floor 1 - Living Room



Dimensions: 16'2" x 21'5"  
Area: 280 sq. ft  
Counted as Living Area:  
Yes

Heated: Yes  
Finished: Yes  
Enclosed: Yes  
Contiguous:  
Yes  
Permitted: Yes  
Wet Space: No  
Addition: No  
Conversion: No

## 7 Floor 1 - W.i.c.



Dimensions: 6'2" x 10'4"  
Area: 63 sq. ft  
Counted as Living Area:  
Yes

Heated: Yes  
Finished: Yes  
Enclosed: Yes  
Contiguous:  
Yes  
Permitted: Yes  
Wet Space: No  
Addition: No  
Conversion: No

## 8 Floor 1 - Kitchen



Dimensions: 11'1" x 11'11"  
Area: 122 sq. ft  
Counted as Living Area:  
Yes

Heated: Yes  
Finished: Yes  
Enclosed: Yes  
Contiguous:  
Yes  
Permitted: Yes  
Wet Space: No  
Addition: No  
Conversion: No

# 126 Azuba Court, Hazel Green, Madison County, Alabama, United States, 35750

## 9 Floor 1 - Laundry



Dimensions: 5'4" x 5'11"  
Area: 32 sq. ft  
Counted as Living Area:  
Yes

Heated: Yes  
Finished: Yes  
Enclosed: Yes  
Contiguous:  
Yes  
Permitted: Yes  
Wet Space: No  
Addition: No  
Conversion: No

## 10 Floor 1 - Primary Bath



Dimensions: 8'10" x 10'4"  
Area: 89 sq. ft  
Counted as Living Area:  
Yes

Heated: Yes  
Finished: Yes  
Enclosed: Yes  
Contiguous:  
Yes  
Permitted: Yes  
Wet Space: Yes  
Addition: No  
Conversion: No

## 11 Floor 1 - Bedroom



Dimensions: 12'11" x 12'1"  
Area: 119 sq. ft  
Counted as Living Area:  
Yes

Heated: Yes  
Finished: Yes  
Enclosed: Yes  
Contiguous:  
Yes  
Permitted: Yes  
Wet Space: No  
Addition: No  
Conversion: No

# 126 Azuba Court, Hazel Green, Madison County, Alabama, United States, 35750

## 12 Floor 1 - Bath



Dimensions: 5'2" x 8'11"  
Area: 46 sq. ft  
Counted as Living Area:  
Yes

Heated: Yes  
Finished: Yes  
Enclosed: Yes  
Contiguous:  
Yes  
Permitted: Yes  
Wet Space: Yes  
Addition: No  
Conversion: No

## 13 Floor 1 - Primary Bedroom



Dimensions: 17'11" x 17'3"  
Area: 264 sq. ft  
Counted as Living Area:  
Yes

Heated: Yes  
Finished: Yes  
Enclosed: Yes  
Contiguous:  
Yes  
Permitted: Yes  
Wet Space: No  
Addition: No  
Conversion: No

## 14 Floor 1 - Bedroom



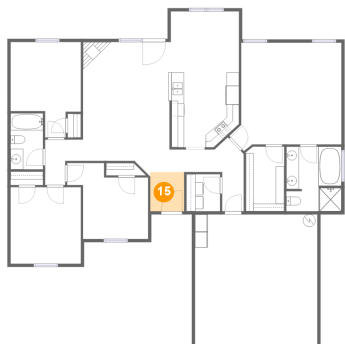
Dimensions: 11'3" x 15'3"  
Area: 138 sq. ft  
Counted as Living Area:  
Yes

Heated: Yes  
Finished: Yes  
Enclosed: Yes  
Contiguous:  
Yes  
Permitted: Yes  
Wet Space: No  
Addition: No  
Conversion: No



# 126 Azuba Court, Hazel Green, Madison County, Alabama, United States, 35750

## 15 Floor 1 - Foyer



Dimensions: 5'5" x 6'3"  
Area: 34 sq. ft  
Counted as Living Area:  
Yes

Heated: Yes  
Finished: Yes  
Enclosed: Yes  
Contiguous:  
Yes  
Permitted: Yes  
Wet Space: No  
Addition: No  
Conversion: No