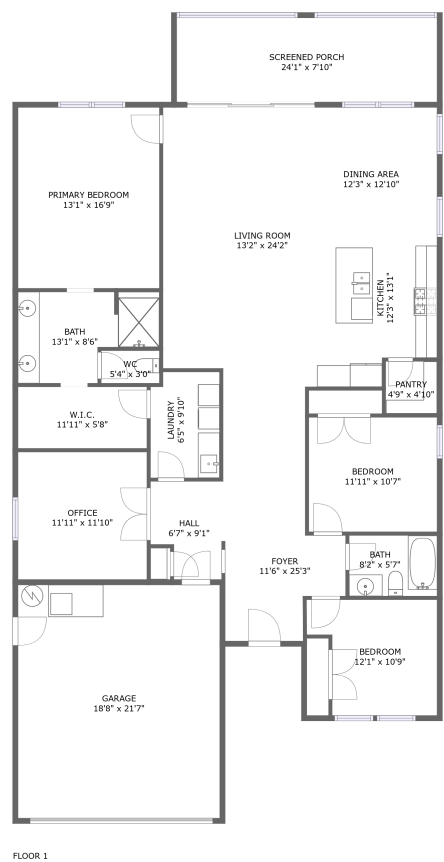




Home report


5547 Silver Sun Drive, Apollo Beach, Hillsborough County,
Florida, United States, 33572




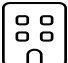
Property summary


 **1** Garages


 **3** Bedrooms

 **2** Bathrooms

 **0** Half baths

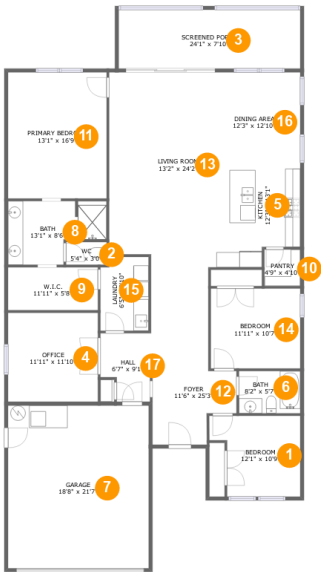
 **1** Floors

 **1,989** Gross living area sqft

 **2,629** Total sqft

Home report

5547 Silver Sun Drive, Apollo Beach, Hillsborough County,
Florida, United States, 33572



Room dimensions

Floor 1 Total sqft: 2629 Living area: 1989

#		Dimensions	sqft	Counted as living area
1	Bedroom	12'1" x 10'9"	112 sq. ft	Yes
2	WC	5'4" x 3'0"	16 sq. ft	Yes
3	Screened Porch	24'1" x 7'10"	188 sq. ft	No
4	Office	11'11" x 11'10"	141 sq. ft	Yes
5	Kitchen	12'3" x 13'1"	146 sq. ft	Yes
6	Bath	8'2" x 5'7"	46 sq. ft	Yes
7	Garage	18'8" x 21'7"	404 sq. ft	No
8	Bath	13'1" x 8'6"	91 sq. ft	Yes
9	W.I.C.	11'11" x 5'8"	68 sq. ft	Yes
10	Pantry	4'9" x 4'10"	23 sq. ft	Yes
11	Primary Bedroom	13'1" x 16'9"	219 sq. ft	Yes

Home report

**5547 Silver Sun Drive, Apollo Beach, Hillsborough County,
Florida, United States, 33572**

#		Dimensions	sqft	Counted as living area
12	Foyer	11'6" x 25'3"	212 sq. ft	Yes
13	Living Room	13'2" x 24'2"	324 sq. ft	Yes
14	Bedroom	11'11" x 10'7"	126 sq. ft	Yes
15	Laundry	6'5" x 9'10"	61 sq. ft	Yes
16	Dining Area	12'3" x 12'10"	157 sq. ft	Yes
17	Hall	6'7" x 9'1"	53 sq. ft	Yes

1 Floor 1 - Bedroom



Dimensions: 12'1" x 10'9"
Area: 112 sq. ft
Counted as living area: Yes

Heated: Yes
Finished: Yes
Enclosed: Yes
Contiguous: Yes
Permitted: Yes
Wet space: No
Addition: No
Conversion: No

2 Floor 1 - WC



Dimensions: 5'4" x 3'0"
Area: 16 sq. ft
Counted as living area: Yes

Heated: Yes
Finished: Yes
Enclosed: Yes
Contiguous: Yes
Permitted: Yes
Wet space: Yes
Addition: No
Conversion: No

Home report

5547 Silver Sun Drive, Apollo Beach, Hillsborough County,
Florida, United States, 33572

3 Floor 1 - Screened Porch



Dimensions: 24'1" x 7'10"
Area: 188 sq. ft
Counted as living area: No

Heated: No
Finished: Yes
Enclosed: No
Contiguous: Yes
Permitted: Yes
Wet space: No
Addition: No
Conversion: No

4 Floor 1 - Office



Dimensions: 11'11" x 11'10"
Area: 141 sq. ft
Counted as living area: Yes

Heated: Yes
Finished: Yes
Enclosed: Yes
Contiguous: Yes
Permitted: Yes
Wet space: No
Addition: No
Conversion: No

5 Floor 1 - Kitchen



Dimensions: 12'3" x 13'1"
Area: 146 sq. ft
Counted as living area: Yes

Heated: Yes
Finished: Yes
Enclosed: Yes
Contiguous: Yes
Permitted: Yes
Wet space: No
Addition: No
Conversion: No

Home report

5547 Silver Sun Drive, Apollo Beach, Hillsborough County,
Florida, United States, 33572

6 Floor 1 - Bath



Dimensions: 8'2" x 5'7"
Area: 46 sq. ft
Counted as living area: Yes

Heated: Yes
Finished: Yes
Enclosed: Yes
Contiguous: Yes
Permitted: Yes
Wet space: Yes
Addition: No
Conversion: No

7 Floor 1 - Garage



Dimensions: 18'8" x 21'7"
Area: 404 sq. ft
Counted as living area: No

Heated: No
Finished: No
Enclosed: Yes
Contiguous: Yes
Permitted: Yes
Wet space: No
Addition: No
Conversion: No

8 Floor 1 - Bath



Dimensions: 13'1" x 8'6"
Area: 91 sq. ft
Counted as living area: Yes

Heated: Yes
Finished: Yes
Enclosed: Yes
Contiguous: Yes
Permitted: Yes
Wet space: Yes
Addition: No
Conversion: No

Home report

5547 Silver Sun Drive, Apollo Beach, Hillsborough County,
Florida, United States, 33572

9 Floor 1 - W.I.C.



Dimensions: 11'11" x 5'8"
Area: 68 sq. ft
Counted as living area: Yes

Heated: Yes
Finished: Yes
Enclosed: Yes
Contiguous: Yes
Permitted: Yes
Wet space: No
Addition: No
Conversion: No

10 Floor 1 - Pantry



Dimensions: 4'9" x 4'10"
Area: 23 sq. ft
Counted as living area: Yes

Heated: Yes
Finished: Yes
Enclosed: Yes
Contiguous: Yes
Permitted: Yes
Wet space: No
Addition: No
Conversion: No

11 Floor 1 - Primary Bedroom



Dimensions: 13'1" x 16'9"
Area: 219 sq. ft
Counted as living area: Yes

Heated: Yes
Finished: Yes
Enclosed: Yes
Contiguous: Yes
Permitted: Yes
Wet space: No
Addition: No
Conversion: No

Home report

5547 Silver Sun Drive, Apollo Beach, Hillsborough County,
Florida, United States, 33572

12 Floor 1 - Foyer



Dimensions: 11'6" x 25'3"
Area: 212 sq. ft
Counted as living area: Yes

Heated: Yes
Finished: Yes
Enclosed: Yes
Contiguous: Yes
Permitted: Yes
Wet space: No
Addition: No
Conversion: No

13 Floor 1 - Living Room



Dimensions: 13'2" x 24'2"
Area: 324 sq. ft
Counted as living area: Yes

Heated: Yes
Finished: Yes
Enclosed: Yes
Contiguous: Yes
Permitted: Yes
Wet space: No
Addition: No
Conversion: No

14 Floor 1 - Bedroom



Dimensions: 11'11" x 10'7"
Area: 126 sq. ft
Counted as living area: Yes

Heated: Yes
Finished: Yes
Enclosed: Yes
Contiguous: Yes
Permitted: Yes
Wet space: No
Addition: No
Conversion: No

Home report

5547 Silver Sun Drive, Apollo Beach, Hillsborough County,
Florida, United States, 33572

15 Floor 1 - Laundry



Dimensions: 6'5" x 9'10"
Area: 61 sq. ft
Counted as living area: Yes

Heated: Yes
Finished: Yes
Enclosed: Yes
Contiguous: Yes
Permitted: Yes
Wet space: No
Addition: No
Conversion: No

16 Floor 1 - Dining Area



Dimensions: 12'3" x 12'10"
Area: 157 sq. ft
Counted as living area: Yes

Heated: Yes
Finished: Yes
Enclosed: Yes
Contiguous: Yes
Permitted: Yes
Wet space: No
Addition: No
Conversion: No

17 Floor 1 - Hall



Dimensions: 6'7" x 9'1"
Area: 53 sq. ft
Counted as living area: Yes

Heated: Yes
Finished: Yes
Enclosed: Yes
Contiguous: Yes
Permitted: Yes
Wet space: No
Addition: No
Conversion: No