

1661 Admiralty Boulevard, Turtle Creek Golf Club, Rockledge, Brevard County, Florida, United



Property Summary



2 floors



4 bedrooms



3 bathrooms



4,771 total sqft

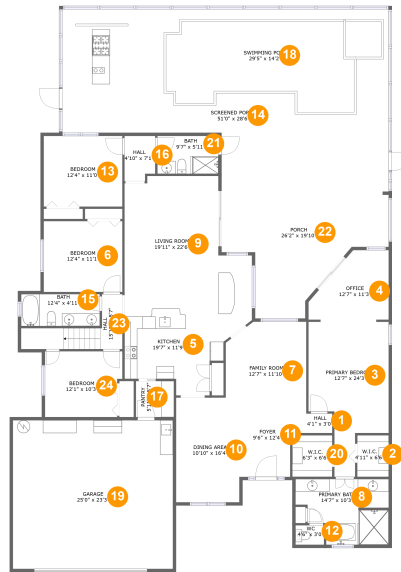


1 garages



2,433 Gross Living Area sqft

1661 Admiralty Boulevard, Turtle Creek Golf Club, Rockledge, Brevard County, Florida, United



Room Dimensions

Floor 1

Total sqft: 4293

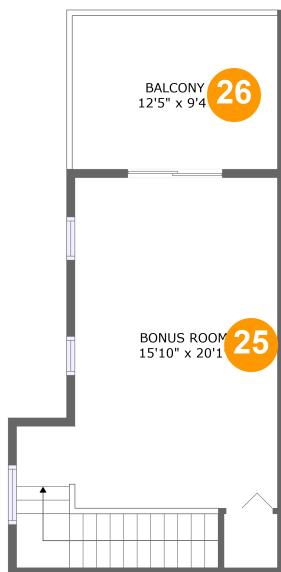
Living area: 2433

#	Room name	Dimensions	Area (sqft)	Counted as Living Area
1	Hall	4'1" x 3'0"	12 sq. ft	Yes
2	W.i.c.	4'11" x 6'6"	32 sq. ft	Yes
3	Primary Bedroom	12'7" x 24'3"	227 sq. ft	Yes
4	Office	12'7" x 11'3"	111 sq. ft	Yes
5	Kitchen	19'7" x 11'9"	157 sq. ft	Yes
6	Bedroom	12'4" x 11'1"	136 sq. ft	Yes
7	Family Room	12'7" x 11'10"	142 sq. ft	Yes
8	Primary Bath	14'7" x 10'3"	127 sq. ft	Yes
9	Living Room	19'11" x 22'6"	380 sq. ft	Yes
10	Dining Area	10'10" x 16'4"	174 sq. ft	Yes
11	Foyer	9'6" x 12'4"	101 sq. ft	Yes

1661 Admiralty Boulevard, Turtle Creek Golf Club, Rockledge, Brevard County, Florida, United

#	Room name	Dimensions	Area (sqft)	Counted as Living Area
12	Wc	4'6" x 3'0"	14 sq. ft	Yes
13	Bedroom	12'4" x 11'0"	136 sq. ft	Yes
14	Screened Porch	51'0" x 28'6"	1178 sq. ft	No
15	Bath	12'4" x 4'11"	61 sq. ft	Yes
16	Hall	4'10" x 7'1"	32 sq. ft	Yes
17	Pantry	5'11" x 5'7"	34 sq. ft	Yes
18	Swimming Pool	29'5" x 14'2"	380 sq. ft	Yes
19	Garage	25'0" x 23'3"	581 sq. ft	No
20	W.i.c.	6'3" x 6'6"	41 sq. ft	Yes
21	Bath	9'7" x 5'11"	57 sq. ft	Yes
22	Porch	26'2" x 19'10"	397 sq. ft	No
23	Hall	15'10" x 8'7"	69 sq. ft	Yes
24	Bedroom	12'1" x 10'3"	120 sq. ft	Yes

1661 Admiralty Boulevard, Turtle Creek Golf Club, Rockledge, Brevard County, Florida, United



Room Dimensions

Floor 2

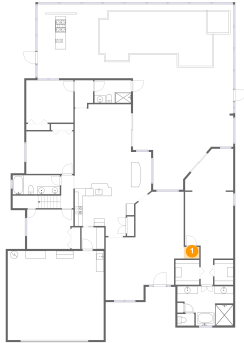
Total sqft: 478

Living area: 0

#	Room name	Dimensions	Area (sqft)	Counted as Living Area
25	Bonus Room	15'10" x 20'1"	309 sq. ft	Yes
26	Balcony	12'5" x 9'4"	116 sq. ft	No

1661 Admiralty Boulevard, Turtle Creek Golf Club, Rockledge, Brevard County, Florida, United

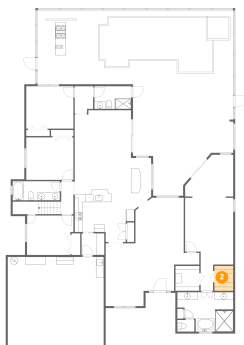
1 Floor 1 - Hall



Dimensions: 4'1" x 3'0"
Area: 12 sq. ft
Counted as Living Area:
Yes

Heated: Yes
Finished: Yes
Enclosed: Yes
Contiguous:
Yes
Permitted: Yes
Wet Space: No
Addition: No
Conversion: No

2 Floor 1 - W.i.c.

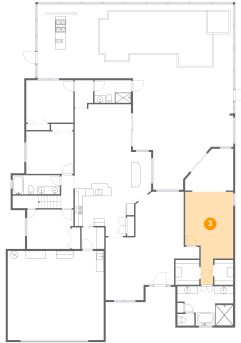


Dimensions: 4'11" x 6'6"
Area: 32 sq. ft
Counted as Living Area:
Yes

Heated: Yes
Finished: Yes
Enclosed: Yes
Contiguous:
Yes
Permitted: Yes
Wet Space: No
Addition: No
Conversion: No

1661 Admiralty Boulevard, Turtle Creek Golf Club, Rockledge, Brevard County, Florida, United

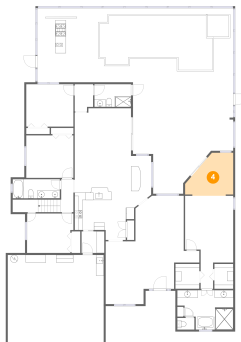
3 Floor 1 - Primary Bedroom



Dimensions: 12'7" x 24'3"
Area: 227 sq. ft
Counted as Living Area:
Yes

Heated: Yes
Finished: Yes
Enclosed: Yes
Contiguous:
Yes
Permitted: Yes
Wet Space: No
Addition: No
Conversion: No

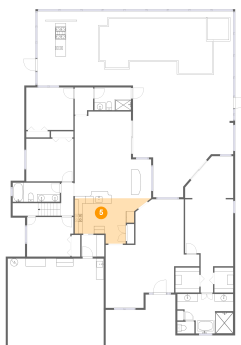
4 Floor 1 - Office



Dimensions: 12'7" x 11'3"
Area: 111 sq. ft
Counted as Living Area:
Yes

Heated: Yes
Finished: Yes
Enclosed: Yes
Contiguous:
Yes
Permitted: Yes
Wet Space: No
Addition: No
Conversion: No

5 Floor 1 - Kitchen

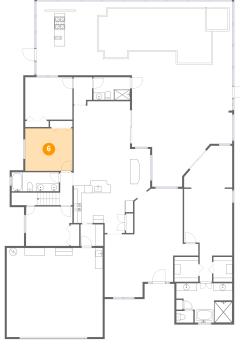


Dimensions: 19'7" x 11'9"
Area: 157 sq. ft
Counted as Living Area:
Yes

Heated: Yes
Finished: Yes
Enclosed: Yes
Contiguous:
Yes
Permitted: Yes
Wet Space: No
Addition: No
Conversion: No

1661 Admiralty Boulevard, Turtle Creek Golf Club, Rockledge, Brevard County, Florida, United

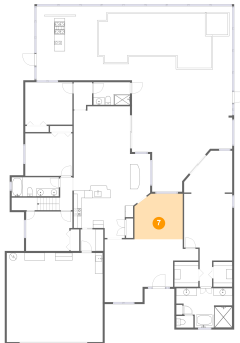
6 Floor 1 - Bedroom



Dimensions: 12'4" x 11'1"
Area: 136 sq. ft
Counted as Living Area:
Yes

Heated: Yes
Finished: Yes
Enclosed: Yes
Contiguous:
Yes
Permitted: Yes
Wet Space: No
Addition: No
Conversion: No

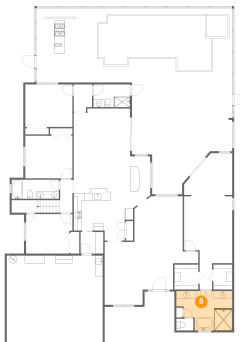
7 Floor 1 - Family Room



Dimensions: 12'7" x 11'10"
Area: 142 sq. ft
Counted as Living Area:
Yes

Heated: Yes
Finished: Yes
Enclosed: Yes
Contiguous:
Yes
Permitted: Yes
Wet Space: No
Addition: No
Conversion: No

8 Floor 1 - Primary Bath

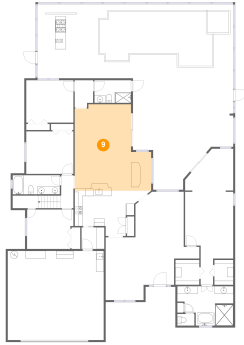


Dimensions: 14'7" x 10'3"
Area: 127 sq. ft
Counted as Living Area:
Yes

Heated: Yes
Finished: Yes
Enclosed: Yes
Contiguous:
Yes
Permitted: Yes
Wet Space: Yes
Addition: No
Conversion: No

1661 Admiralty Boulevard, Turtle Creek Golf Club, Rockledge, Brevard County, Florida, United

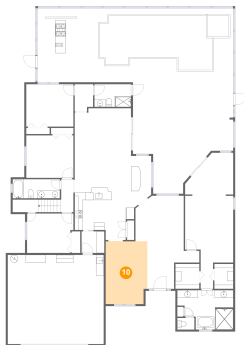
9 Floor 1 - Living Room



Dimensions: 19'11" x 22'6"
Area: 380 sq. ft
Counted as Living Area:
Yes

Heated: Yes
Finished: Yes
Enclosed: Yes
Contiguous:
Yes
Permitted: Yes
Wet Space: No
Addition: No
Conversion: No

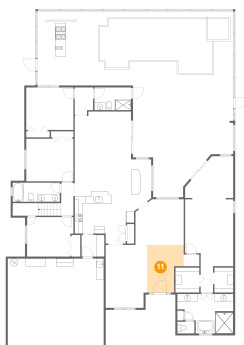
10 Floor 1 - Dining Area



Dimensions: 10'10" x 16'4"
Area: 174 sq. ft
Counted as Living Area:
Yes

Heated: Yes
Finished: Yes
Enclosed: Yes
Contiguous:
Yes
Permitted: Yes
Wet Space: No
Addition: No
Conversion: No

11 Floor 1 - Foyer

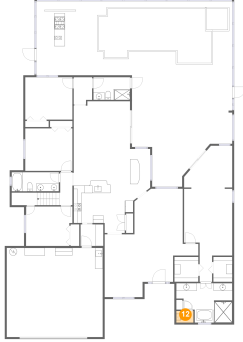


Dimensions: 9'6" x 12'4"
Area: 101 sq. ft
Counted as Living Area:
Yes

Heated: Yes
Finished: Yes
Enclosed: Yes
Contiguous:
Yes
Permitted: Yes
Wet Space: No
Addition: No
Conversion: No

1661 Admiralty Boulevard, Turtle Creek Golf Club, Rockledge, Brevard County, Florida, United

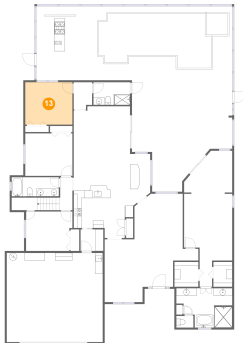
12 Floor 1 - Wc



Dimensions: 4'6" x 3'0"
Area: 14 sq. ft
Counted as Living Area:
Yes

Heated: Yes
Finished: Yes
Enclosed: Yes
Contiguous:
Yes
Permitted: Yes
Wet Space: Yes
Addition: No
Conversion: No

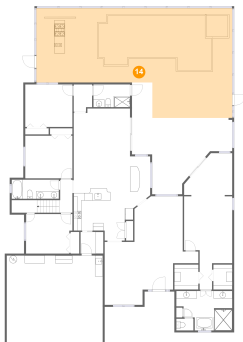
13 Floor 1 - Bedroom



Dimensions: 12'4" x 11'0"
Area: 136 sq. ft
Counted as Living Area:
Yes

Heated: Yes
Finished: Yes
Enclosed: Yes
Contiguous:
Yes
Permitted: Yes
Wet Space: No
Addition: No
Conversion: No

14 Floor 1 - Screened Porch

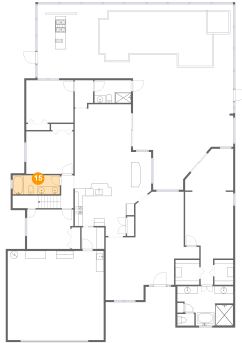


Dimensions: 51'0" x 28'6"
Area: 1178 sq. ft
Counted as Living Area: No

Heated: No
Finished: Yes
Enclosed: No
Contiguous: Yes
Permitted: Yes
Wet Space: No
Addition: No
Conversion: No

1661 Admiralty Boulevard, Turtle Creek Golf Club, Rockledge, Brevard County, Florida, United

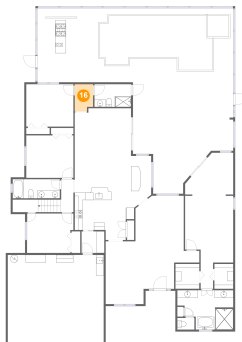
15 Floor 1 - Bath



Dimensions: 12'4" x 4'11"
Area: 61 sq. ft
Counted as Living Area:
Yes

Heated: Yes
Finished: Yes
Enclosed: Yes
Contiguous:
Yes
Permitted: Yes
Wet Space: Yes
Addition: No
Conversion: No

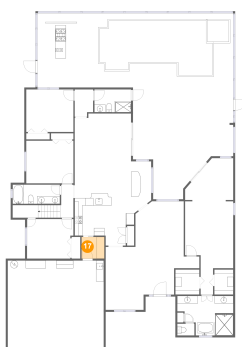
16 Floor 1 - Hall



Dimensions: 4'10" x 7'1"
Area: 32 sq. ft
Counted as Living Area:
Yes

Heated: Yes
Finished: Yes
Enclosed: Yes
Contiguous:
Yes
Permitted: Yes
Wet Space: No
Addition: No
Conversion: No

17 Floor 1 - Pantry

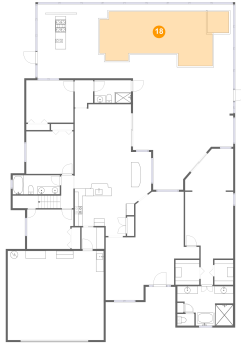


Dimensions: 5'11" x 5'7"
Area: 34 sq. ft
Counted as Living Area:
Yes

Heated: Yes
Finished: Yes
Enclosed: Yes
Contiguous:
Yes
Permitted: Yes
Wet Space: No
Addition: No
Conversion: No

1661 Admiralty Boulevard, Turtle Creek Golf Club, Rockledge, Brevard County, Florida, United

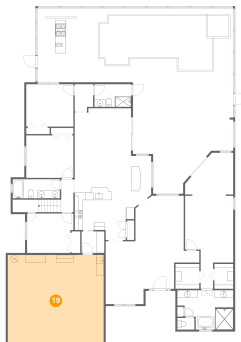
18 Floor 1 - Swimming Pool



Dimensions: 29'5" x 14'2"
Area: 380 sq. ft
Counted as Living Area:
Yes

Heated: No
Finished: No
Enclosed: No
Contiguous:
Yes
Permitted: No
Wet Space: No
Addition: No
Conversion: No

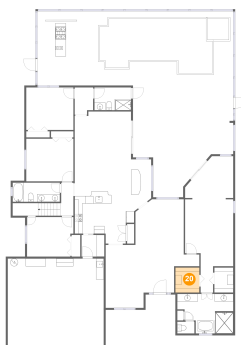
19 Floor 1 - Garage



Dimensions: 25'0" x 23'3"
Area: 581 sq. ft
Counted as Living Area: No

Heated: No
Finished: No
Enclosed: Yes
Contiguous: Yes
Permitted: Yes
Wet Space: No
Addition: No
Conversion: No

20 Floor 1 - W.i.c.

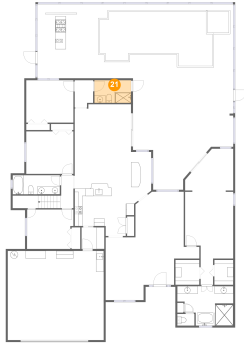


Dimensions: 6'3" x 6'6"
Area: 41 sq. ft
Counted as Living Area:
Yes

Heated: Yes
Finished: Yes
Enclosed: Yes
Contiguous:
Yes
Permitted: Yes
Wet Space: No
Addition: No
Conversion: No

1661 Admiralty Boulevard, Turtle Creek Golf Club, Rockledge, Brevard County, Florida, United

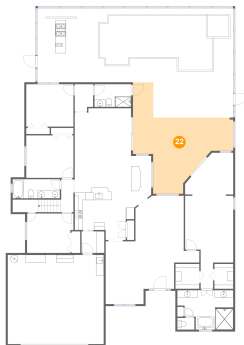
21 Floor 1 - Bath



Dimensions: 9'7" x 5'11"
Area: 57 sq. ft
Counted as Living Area:
Yes

Heated: Yes
Finished: Yes
Enclosed: Yes
Contiguous:
Yes
Permitted: Yes
Wet Space: Yes
Addition: No
Conversion: No

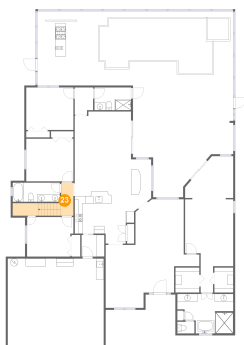
22 Floor 1 - Porch



Dimensions: 26'2" x 19'10"
Area: 397 sq. ft
Counted as Living Area: No

Heated: No
Finished: Yes
Enclosed: No
Contiguous: Yes
Permitted: Yes
Wet Space: No
Addition: No
Conversion: No

23 Floor 1 - Hall

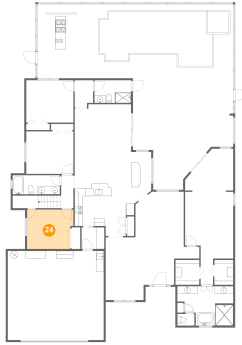


Dimensions: 15'10" x 8'7"
Area: 69 sq. ft
Counted as Living Area:
Yes

Heated: Yes
Finished: Yes
Enclosed: Yes
Contiguous:
Yes
Permitted: Yes
Wet Space: No
Addition: No
Conversion: No

1661 Admiralty Boulevard, Turtle Creek Golf Club, Rockledge, Brevard County, Florida, United

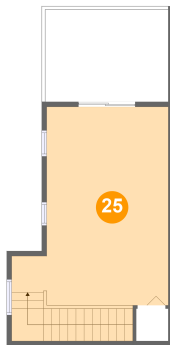
24 Floor 1 - Bedroom



Dimensions: 12'1" x 10'3"
Area: 120 sq. ft
Counted as Living Area: Yes

Heated: Yes
Finished: Yes
Enclosed: Yes
Contiguous: Yes
Permitted: Yes
Wet Space: No
Addition: No
Conversion: No

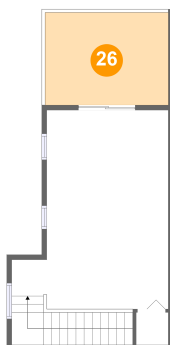
25 Floor 2 - Bonus Room



Dimensions: 15'10" x 20'1"
Area: 309 sq. ft
Counted as Living Area: Yes

Heated: Yes
Finished: Yes
Enclosed: Yes
Contiguous: No
Permitted: Yes
Wet Space: No
Addition: No
Conversion: No

26 Floor 2 - Balcony



Dimensions: 12'5" x 9'4"
Area: 116 sq. ft
Counted as Living Area: No

Heated: No
Finished: Yes
Enclosed: No
Contiguous: Yes
Permitted: Yes
Wet Space: No
Addition: No
Conversion: No