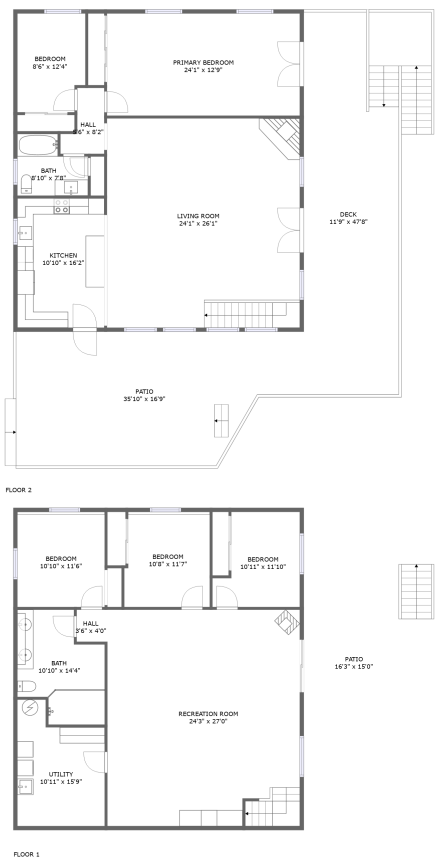




Home report


396 Snow Top Dr,Drake,CO,US




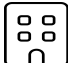
Property summary


**0**
Garages


**5**
Bedrooms

**2**
Bathrooms

**0**
Half baths

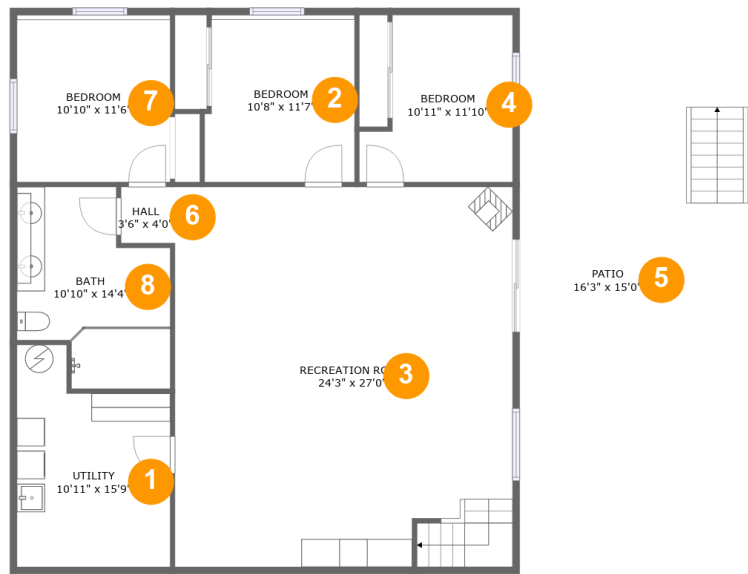
**2**
Floors

**2,912**
Gross living
area sqft

**4,291**
Total sqft

Home report

396 Snow Top Dr,Drake,CO,US



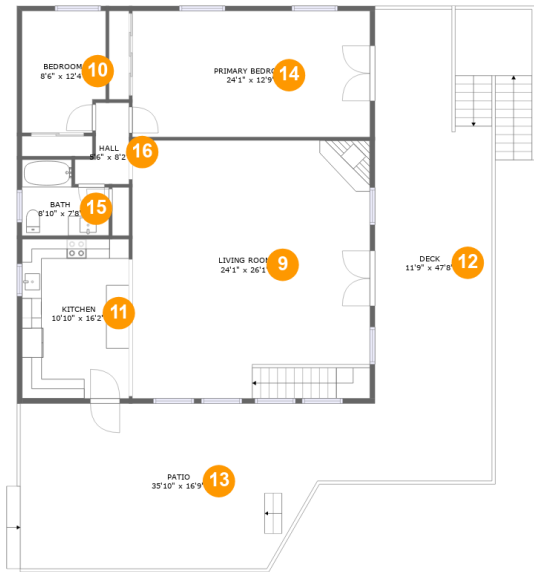
Room dimensions

Floor 1 Total sqft: 1671 Living area: 1456

#		Dimensions	sqft	Counted as living area
1	Utility	10'11" x 15'9"	146 sq. ft	Yes
2	Bedroom	10'8" x 11'7"	123 sq. ft	Yes
3	Recreation Room	24'3" x 27'0"	647 sq. ft	Yes
4	Bedroom	10'11" x 11'10"	110 sq. ft	Yes
5	Patio	16'3" x 15'0"	215 sq. ft	No
6	Hall	3'6" x 4'0"	14 sq. ft	Yes
7	Bedroom	10'10" x 11'6"	129 sq. ft	Yes
8	Bath	10'10" x 14'4"	126 sq. ft	Yes

Home report

396 Snow Top Dr,Drake,CO,US

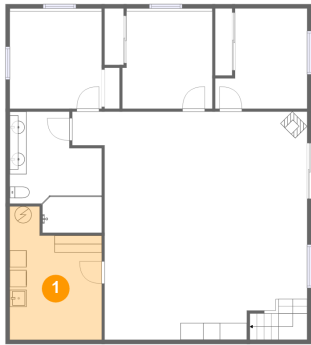


Room dimensions

Floor 2 Total sqft: 2620 Living area: 1456

#		Dimensions	sqft	Counted as living area
9	Living Room	24'1" x 26'1"	628 sq. ft	Yes
10	Bedroom	8'6" x 12'4"	100 sq. ft	Yes
11	Kitchen	10'10" x 16'2"	175 sq. ft	Yes
12	Deck	11'9" x 47'8"	627 sq. ft	No
13	Patio	35'10" x 16'9"	537 sq. ft	No
14	Primary Bedroom	24'1" x 12'9"	307 sq. ft	Yes
15	Bath	8'10" x 7'8"	57 sq. ft	Yes
16	Hall	5'6" x 8'2"	33 sq. ft	Yes

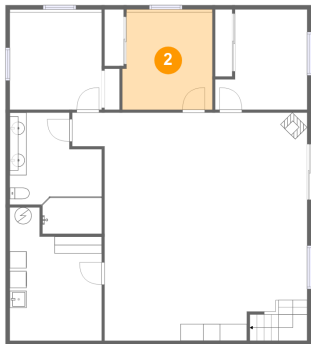
1 Floor 1 - Utility



Dimensions: 10'11" x 15'9"
Area: 146 sq. ft
Counted as living area: Yes

Heated: Yes
Finished: Yes
Enclosed: Yes
Contiguous: Yes
Permitted: Yes
Wet space: No
Addition: No
Conversion: No

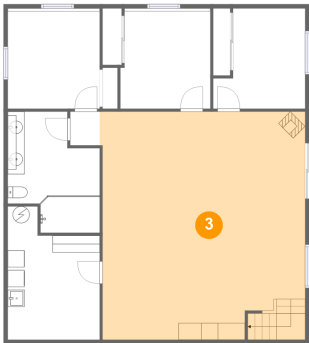
2 Floor 1 - Bedroom



Dimensions: 10'8" x 11'7"
Area: 123 sq. ft
Counted as living area: Yes

Heated: Yes
Finished: Yes
Enclosed: Yes
Contiguous: Yes
Permitted: Yes
Wet space: No
Addition: No
Conversion: No

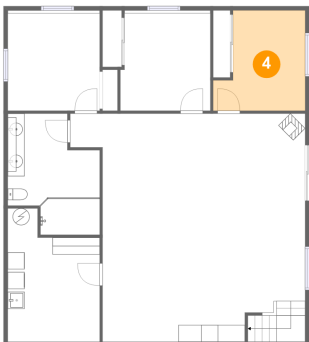
3 Floor 1 - Recreation Room



Dimensions: 24'3" x 27'0"
Area: 647 sq. ft
Counted as living area: Yes

Heated: Yes
Finished: Yes
Enclosed: Yes
Contiguous: Yes
Permitted: Yes
Wet space: No
Addition: No
Conversion: No

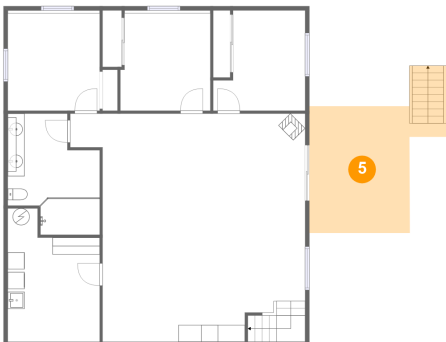
4 Floor 1 - Bedroom



Dimensions: 10'11" x 11'10"
Area: 110 sq. ft
Counted as living area: Yes

Heated: Yes
Finished: Yes
Enclosed: Yes
Contiguous: Yes
Permitted: Yes
Wet space: No
Addition: No
Conversion: No

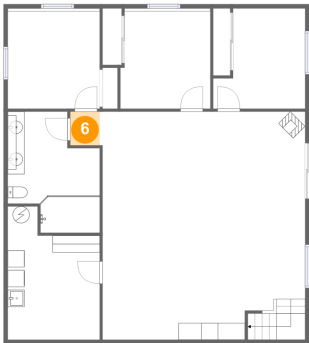
5 Floor 1 - Patio



Dimensions: 16'3" x 15'0"
Area: 215 sq. ft
Counted as living area: No

Heated: No
Finished: Yes
Enclosed: No
Contiguous: Yes
Permitted: Yes
Wet space: No
Addition: No
Conversion: No

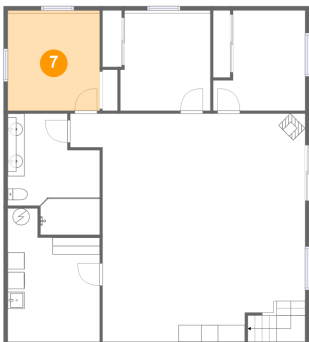
6 Floor 1 - Hall



Dimensions: 3'6" x 4'0"
Area: 14 sq. ft
Counted as living area: Yes

Heated: Yes
Finished: Yes
Enclosed: Yes
Contiguous: Yes
Permitted: Yes
Wet space: No
Addition: No
Conversion: No

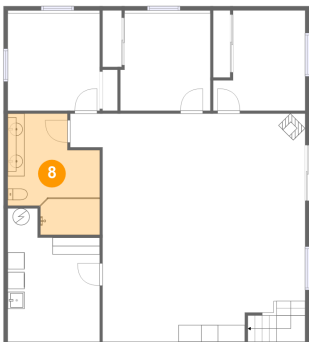
7 Floor 1 - Bedroom



Dimensions: 10'10" x 11'6"
Area: 129 sq. ft
Counted as living area: Yes

Heated: Yes
Finished: Yes
Enclosed: Yes
Contiguous: Yes
Permitted: Yes
Wet space: No
Addition: No
Conversion: No

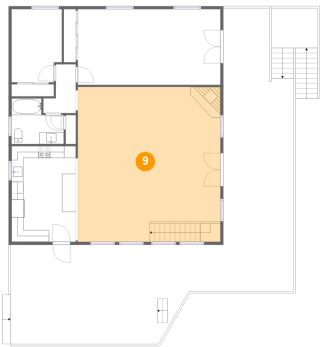
8 Floor 1 - Bath



Dimensions: 10'10" x 14'4"
Area: 126 sq. ft
Counted as living area: Yes

Heated: Yes
Finished: Yes
Enclosed: Yes
Contiguous: Yes
Permitted: Yes
Wet space: Yes
Addition: No
Conversion: No

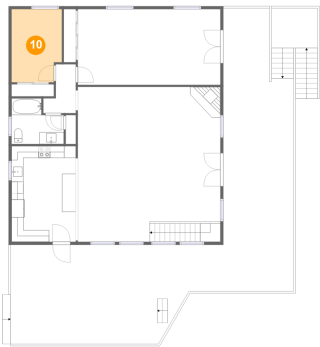
9 Floor 2 - Living Room



Dimensions: 24'1" x 26'1"
Area: 628 sq. ft
Counted as living area: Yes

Heated: Yes
Finished: Yes
Enclosed: Yes
Contiguous: Yes
Permitted: Yes
Wet space: No
Addition: No
Conversion: No

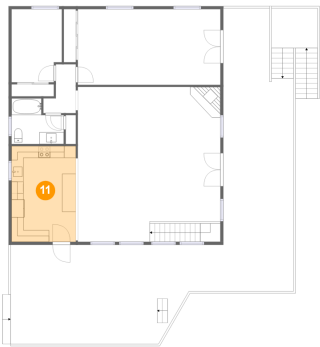
10 Floor 2 - Bedroom



Dimensions: 8'6" x 12'4"
Area: 100 sq. ft
Counted as living area: Yes

Heated: Yes
Finished: Yes
Enclosed: Yes
Contiguous: Yes
Permitted: Yes
Wet space: No
Addition: No
Conversion: No

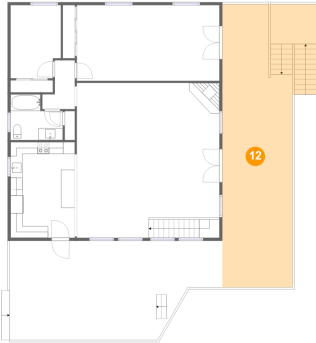
11 Floor 2 - Kitchen



Dimensions: 10'10" x 16'2"
Area: 175 sq. ft
Counted as living area: Yes

Heated: Yes
Finished: Yes
Enclosed: Yes
Contiguous: Yes
Permitted: Yes
Wet space: No
Addition: No
Conversion: No

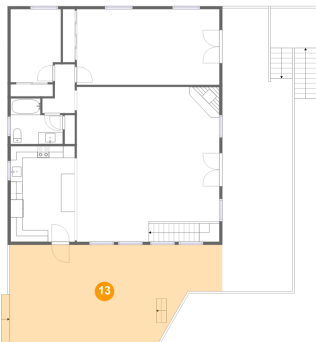
12 Floor 2 - Deck



Dimensions: 11'9" x 47'8"
Area: 627 sq. ft
Counted as living area: No

Heated: No
Finished: Yes
Enclosed: No
Contiguous: Yes
Permitted: Yes
Wet space: No
Addition: No
Conversion: No

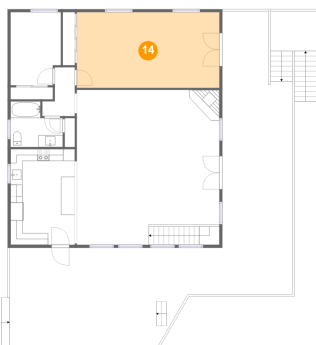
13 Floor 2 - Patio



Dimensions: 35'10" x 16'9"
Area: 537 sq. ft
Counted as living area: No

Heated: No
Finished: Yes
Enclosed: No
Contiguous: Yes
Permitted: Yes
Wet space: No
Addition: No
Conversion: No

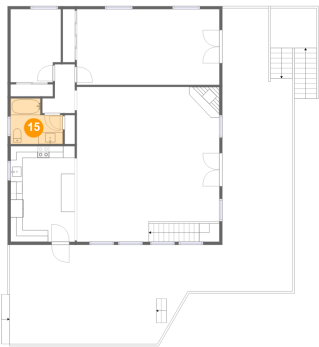
14 Floor 2 - Primary Bedroom



Dimensions: 24'1" x 12'9"
Area: 307 sq. ft
Counted as living area: Yes

Heated: Yes
Finished: Yes
Enclosed: Yes
Contiguous: Yes
Permitted: Yes
Wet space: No
Addition: No
Conversion: No

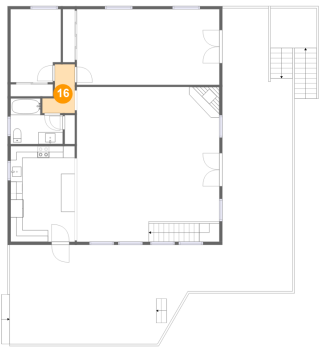
15 Floor 2 - Bath



Dimensions: 8'10" x 7'8"
Area: 57 sq. ft
Counted as living area: Yes

Heated: Yes
Finished: Yes
Enclosed: Yes
Contiguous: Yes
Permitted: Yes
Wet space: Yes
Addition: No
Conversion: No

16 Floor 2 - Hall



Dimensions: 5'6" x 8'2"
Area: 33 sq. ft
Counted as living area: Yes

Heated: Yes
Finished: Yes
Enclosed: Yes
Contiguous: Yes
Permitted: Yes
Wet space: No
Addition: No
Conversion: No