

Home report

4 South Vine Street, The Fan, Richmond, Richmond city, Virginia,
United States, 23220



Total Area: 2921 sq. ft

Floor 1: 1460 sq. ft, Floor 2: 1461 sq. ft

Excluded: Porch 234 sq. ft, Balcony 242 sq. ft, Walls: 156 sq. ft

Property summary

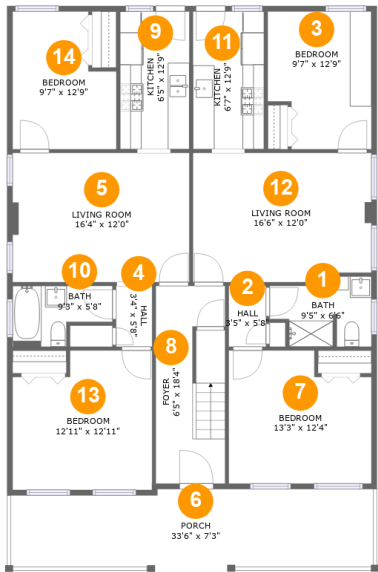
 **2** Floors

 **8** Bedrooms

 **4** Bathrooms

Home report

4 South Vine Street, The Fan, Richmond, Richmond city, Virginia,
United States, 23220



Room dimensions

Floor 1

Total:1460sqft Excluded: 234sqft

| # | | Max Dimensions | sqft | Included |
|----|-------------|----------------|------------|----------|
| 1 | Bath | 9'5" x 6'6" | 51 sq. ft | Yes |
| 2 | Hall | 3'5" x 5'8" | 19 sq. ft | Yes |
| 3 | Bedroom | 9'7" x 12'9" | 113 sq. ft | Yes |
| 4 | Hall | 3'4" x 5'8" | 19 sq. ft | Yes |
| 5 | Living Room | 16'4" x 12'0" | 196 sq. ft | Yes |
| 6 | Porch | 33'6" x 7'3" | 234 sq. ft | No |
| 7 | Bedroom | 13'3" x 12'4" | 150 sq. ft | Yes |
| 8 | Foyer | 6'5" x 18'4" | 115 sq. ft | Yes |
| 9 | Kitchen | 6'5" x 12'9" | 82 sq. ft | Yes |
| 10 | Bath | 9'3" x 5'8" | 42 sq. ft | Yes |
| 11 | Kitchen | 6'7" x 12'9" | 84 sq. ft | Yes |

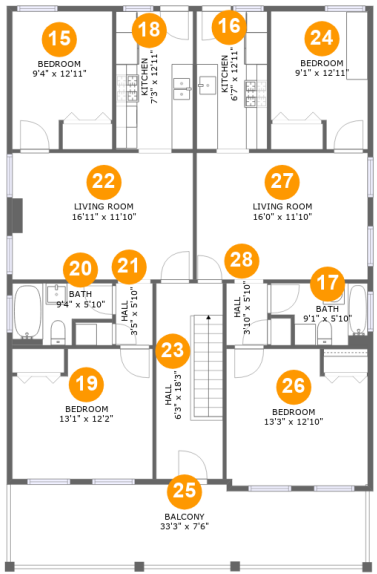
Home report

4 South Vine Street, The Fan, Richmond, Richmond city, Virginia,
United States, 23220

| # | | Max Dimensions | sqft | Included |
|----|-------------|-----------------|------------|----------|
| 12 | Living Room | 16'6" x 12'0" | 194 sq. ft | Yes |
| 13 | Bedroom | 12'11" x 12'11" | 154 sq. ft | Yes |
| 14 | Bedroom | 9'7" x 12'9" | 108 sq. ft | Yes |

Home report

4 South Vine Street, The Fan, Richmond, Richmond city, Virginia,
United States, 23220



Room dimensions

Floor 2 Total:1461sqft Excluded: 242sqft

| # | | Max Dimensions | sqft | Included |
|----|-------------|-----------------|------------|----------|
| 15 | Bedroom | 9'4" x 12'11" | 107 sq. ft | Yes |
| 16 | Kitchen | 6'7" x 12'11" | 85 sq. ft | Yes |
| 17 | Bath | 9'1" x 5'10" | 46 sq. ft | Yes |
| 18 | Kitchen | 7'3" x 12'11" | 93 sq. ft | Yes |
| 19 | Bedroom | 13'1" x 12'2" | 146 sq. ft | Yes |
| 20 | Bath | 9'4" x 5'10" | 45 sq. ft | Yes |
| 21 | Hall | 3'5" x 5'10" | 20 sq. ft | Yes |
| 22 | Living Room | 16'11" x 11'10" | 200 sq. ft | Yes |
| 23 | Hall | 6'3" x 18'3" | 114 sq. ft | Yes |
| 24 | Bedroom | 9'1" x 12'11" | 103 sq. ft | Yes |
| 25 | Balcony | 33'3" x 7'6" | 242 sq. ft | No |

Home report

4 South Vine Street, The Fan, Richmond, Richmond city, Virginia,
United States, 23220

| # | | Max Dimensions | sqft | Included |
|----|-------------|----------------|------------|----------|
| 26 | Bedroom | 13'3" x 12'10" | 157 sq. ft | Yes |
| 27 | Living Room | 16'0" x 11'10" | 189 sq. ft | Yes |
| 28 | Hall | 3'10" x 5'10" | 22 sq. ft | Yes |

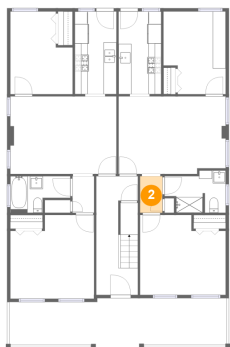
1 Floor 1 - Bath



Max Dimensions: 9'5" x 6'6"
Calculated Area: 51 sq. ft
Included: Yes

Heated: Yes
Finished: Yes
Enclosed: Yes
Contiguous: Yes
Permitted: Yes
Wet space: Yes
Addition: No
Conversion: No

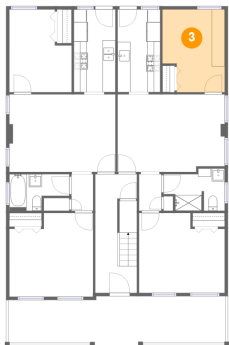
2 Floor 1 - Hall



Max Dimensions: 3'5" x 5'8"
Calculated Area: 19 sq. ft
Included: Yes

Heated: Yes
Finished: Yes
Enclosed: Yes
Contiguous: Yes
Permitted: Yes
Wet space: No
Addition: No
Conversion: No

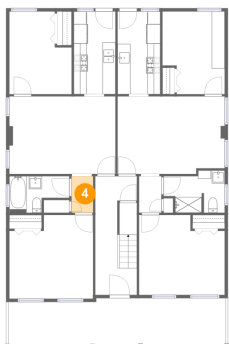
3 Floor 1 - Bedroom



Max Dimensions: 9'7" x 12'9"
Calculated Area: 113 sq. ft
Included: Yes

Heated: Yes
Finished: Yes
Enclosed: Yes
Contiguous: Yes
Permitted: Yes
Wet space: No
Addition: No
Conversion: No

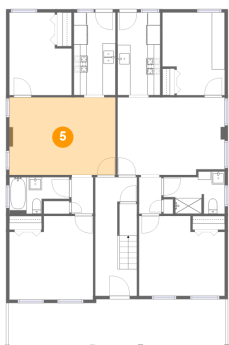
4 Floor 1 - Hall



Max Dimensions: 3'4" x 5'8"
Calculated Area: 19 sq. ft
Included: Yes

Heated: Yes
Finished: Yes
Enclosed: Yes
Contiguous: Yes
Permitted: Yes
Wet space: No
Addition: No
Conversion: No

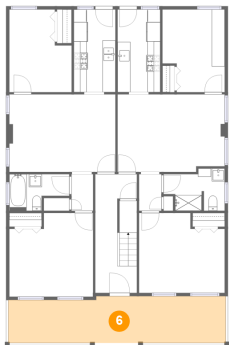
5 Floor 1 - Living Room



Max Dimensions: 16'4" x 12'0"
Calculated Area: 196 sq. ft
Included: Yes

Heated: Yes
Finished: Yes
Enclosed: Yes
Contiguous: Yes
Permitted: Yes
Wet space: No
Addition: No
Conversion: No

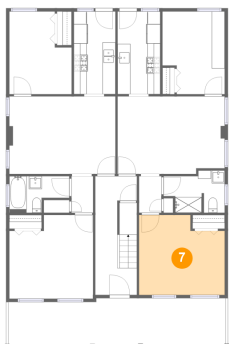
6 Floor 1 - Porch



Max Dimensions: 33'6" x 7'3"
Calculated Area: 234 sq. ft
Included: No

Heated: No
Finished: Yes
Enclosed: No
Contiguous: Yes
Permitted: Yes
Wet space: No
Addition: No
Conversion: No

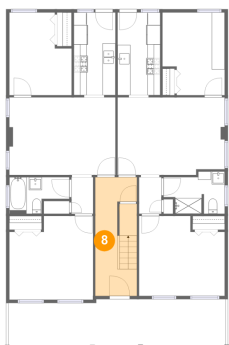
7 Floor 1 - Bedroom



Max Dimensions: 13'3" x 12'4"
Calculated Area: 150 sq. ft
Included: Yes

Heated: Yes
Finished: Yes
Enclosed: Yes
Contiguous: Yes
Permitted: Yes
Wet space: No
Addition: No
Conversion: No

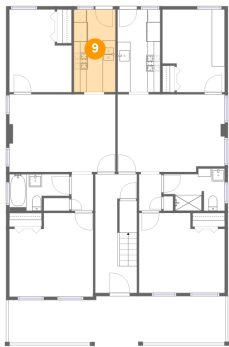
8 Floor 1 - Foyer



Max Dimensions: 6'5" x 18'4"
Calculated Area: 115 sq. ft
Included: Yes

Heated: Yes
Finished: Yes
Enclosed: Yes
Contiguous: Yes
Permitted: Yes
Wet space: No
Addition: No
Conversion: No

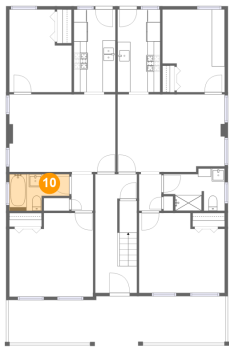
9 Floor 1 - Kitchen



Max Dimensions: 6'5" x 12'9"
Calculated Area: 82 sq. ft
Included: Yes

Heated: Yes
Finished: Yes
Enclosed: Yes
Contiguous: Yes
Permitted: Yes
Wet space: No
Addition: No
Conversion: No

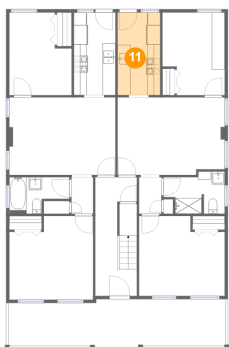
10 Floor 1 - Bath



Max Dimensions: 9'3" x 5'8"
Calculated Area: 42 sq. ft
Included: Yes

Heated: Yes
Finished: Yes
Enclosed: Yes
Contiguous: Yes
Permitted: Yes
Wet space: Yes
Addition: No
Conversion: No

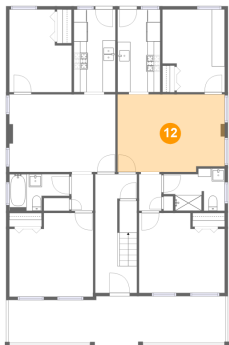
11 Floor 1 - Kitchen



Max Dimensions: 6'7" x 12'9"
Calculated Area: 84 sq. ft
Included: Yes

Heated: Yes
Finished: Yes
Enclosed: Yes
Contiguous: Yes
Permitted: Yes
Wet space: No
Addition: No
Conversion: No

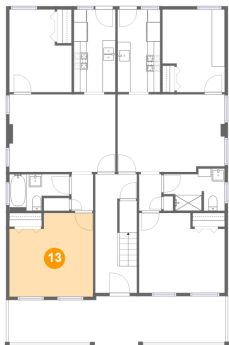
12 Floor 1 - Living Room



Max Dimensions: 16'6" x 12'0"
Calculated Area: 194 sq. ft
Included: Yes

Heated: Yes
Finished: Yes
Enclosed: Yes
Contiguous: Yes
Permitted: Yes
Wet space: No
Addition: No
Conversion: No

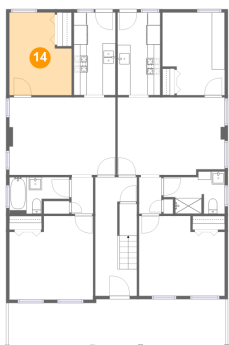
13 Floor 1 - Bedroom



Max Dimensions: 12'11" x 12'11"
Calculated Area: 154 sq. ft
Included: Yes

Heated: Yes
Finished: Yes
Enclosed: Yes
Contiguous: Yes
Permitted: Yes
Wet space: No
Addition: No
Conversion: No

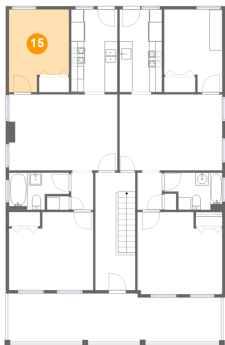
14 Floor 1 - Bedroom



Max Dimensions: 9'7" x 12'9"
Calculated Area: 108 sq. ft
Included: Yes

Heated: Yes
Finished: Yes
Enclosed: Yes
Contiguous: Yes
Permitted: Yes
Wet space: No
Addition: No
Conversion: No

15 Floor 2 - Bedroom



Max Dimensions: 9'4" x 12'11"
Calculated Area: 107 sq. ft
Included: Yes

Heated: Yes
Finished: Yes
Enclosed: Yes
Contiguous: Yes
Permitted: Yes
Wet space: No
Addition: No
Conversion: No

16 Floor 2 - Kitchen



Max Dimensions: 6'7" x 12'11"
Calculated Area: 85 sq. ft
Included: Yes

Heated: Yes
Finished: Yes
Enclosed: Yes
Contiguous: Yes
Permitted: Yes
Wet space: No
Addition: No
Conversion: No

17 Floor 2 - Bath

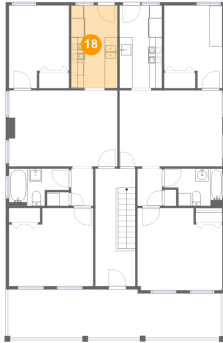


Max Dimensions: 9'1" x 5'10"
Calculated Area: 46 sq. ft
Included: Yes

Heated: Yes
Finished: Yes
Enclosed: Yes
Contiguous: Yes
Permitted: Yes
Wet space: Yes
Addition: No
Conversion: No

4 South Vine Street, The Fan, Richmond, Richmond city, Virginia,
United States, 23220

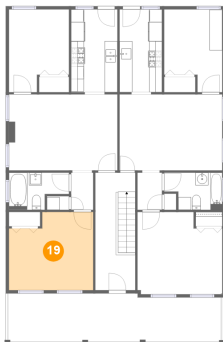
18 Floor 2 - Kitchen



Max Dimensions: 7'3" x
12'11"
Calculated Area: 93 sq. ft
Included: Yes

Heated: Yes
Finished: Yes
Enclosed: Yes
Contiguous:
Yes
Permitted: Yes
Wet space: No
Addition: No
Conversion: No

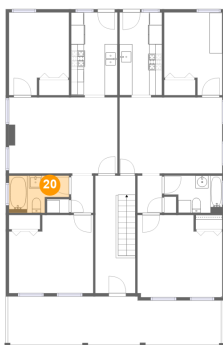
19 Floor 2 - Bedroom



Max Dimensions: 13'1" x
12'2"
Calculated Area: 146 sq. ft
Included: Yes

Heated: Yes
Finished: Yes
Enclosed: Yes
Contiguous:
Yes
Permitted: Yes
Wet space: No
Addition: No
Conversion: No

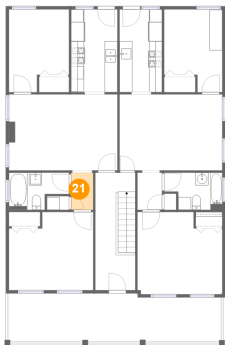
20 Floor 2 - Bath



Max Dimensions: 9'4" x
5'10"
Calculated Area: 45 sq. ft
Included: Yes

Heated: Yes
Finished: Yes
Enclosed: Yes
Contiguous:
Yes
Permitted: Yes
Wet space: Yes
Addition: No
Conversion: No

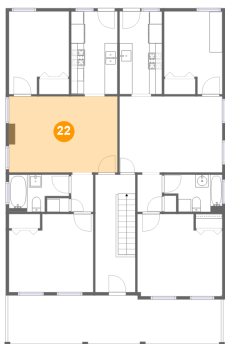
21 Floor 2 - Hall



Max Dimensions: 3'5" x 5'10"
Calculated Area: 20 sq. ft
Included: Yes

Heated: Yes
Finished: Yes
Enclosed: Yes
Contiguous: Yes
Permitted: Yes
Wet space: No
Addition: No
Conversion: No

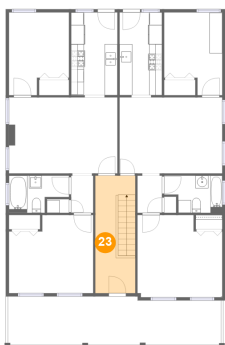
22 Floor 2 - Living Room



Max Dimensions: 16'11" x 11'10"
Calculated Area: 200 sq. ft
Included: Yes

Heated: Yes
Finished: Yes
Enclosed: Yes
Contiguous: Yes
Permitted: Yes
Wet space: No
Addition: No
Conversion: No

23 Floor 2 - Hall



Max Dimensions: 6'3" x 18'3"
Calculated Area: 114 sq. ft
Included: Yes

Heated: Yes
Finished: Yes
Enclosed: Yes
Contiguous: Yes
Permitted: Yes
Wet space: No
Addition: No
Conversion: No

24 Floor 2 - Bedroom



Max Dimensions: 9'1" x 12'11"
Calculated Area: 103 sq. ft
Included: Yes

Heated: Yes
Finished: Yes
Enclosed: Yes
Contiguous: Yes
Permitted: Yes
Wet space: No
Addition: No
Conversion: No

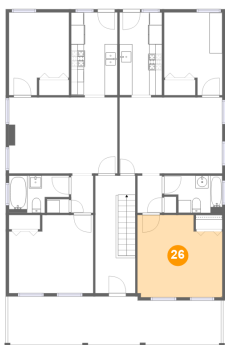
25 Floor 2 - Balcony



Max Dimensions: 33'3" x 7'6"
Calculated Area: 242 sq. ft
Included: No

Heated: No
Finished: Yes
Enclosed: No
Contiguous: Yes
Permitted: Yes
Wet space: No
Addition: No
Conversion: No

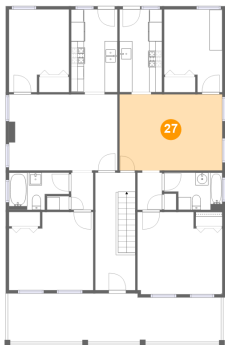
26 Floor 2 - Bedroom



Max Dimensions: 13'3" x 12'10"
Calculated Area: 157 sq. ft
Included: Yes

Heated: Yes
Finished: Yes
Enclosed: Yes
Contiguous: Yes
Permitted: Yes
Wet space: No
Addition: No
Conversion: No

27 Floor 2 - Living Room



Max Dimensions: 16'0" x 11'10"
Calculated Area: 189 sq. ft
Included: Yes

Heated: Yes
Finished: Yes
Enclosed: Yes
Contiguous: Yes
Permitted: Yes
Wet space: No
Addition: No
Conversion: No

28 Floor 2 - Hall



Max Dimensions: 3'10" x 5'10"
Calculated Area: 22 sq. ft
Included: Yes

Heated: Yes
Finished: Yes
Enclosed: Yes
Contiguous: Yes
Permitted: Yes
Wet space: No
Addition: No
Conversion: No