



FOR SALE

\$1,999,999

ZONED: FB-C

PROPERTY TYPE: COMMERCIAL

YEAR BUILT: 1948

LOT SIZE: 31,275 SF (0.72 ACRES)

LOT: 105 FT WIDE X 300 FT DEEP

RE/MAX
COMMERCIAL®

16390 Monterey Road Morgan Hill, CA 95037

High traffic retail store in Morgan Hill with many possibilities. This concrete block building is currently split between a liquor store in the front and a 3 bedroom apartment in the rear (both units are fully leased). Approved uses for the site: group housing, mixed-use residential, multi-family dwellings, residential care facilities, senior housing, single-family attached dwellings, trade school, home day care, instructional services, medical offices & clinics, park & recreation facilities, bank & financial institutions, business support, commercial recreation, restaurant fast food, restaurant sit down, tasting room, bed and breakfast, person services, professional offices, convenience market, general retail, food & beverage production, and more.



Inquire today.

MIKE NAPOLI

Associate

License# 02093708

408.219.2403 (cell)

408.776.6700 (office)

michael.napoli@remaxrp.com

<https://mikenapoli.remax.com>

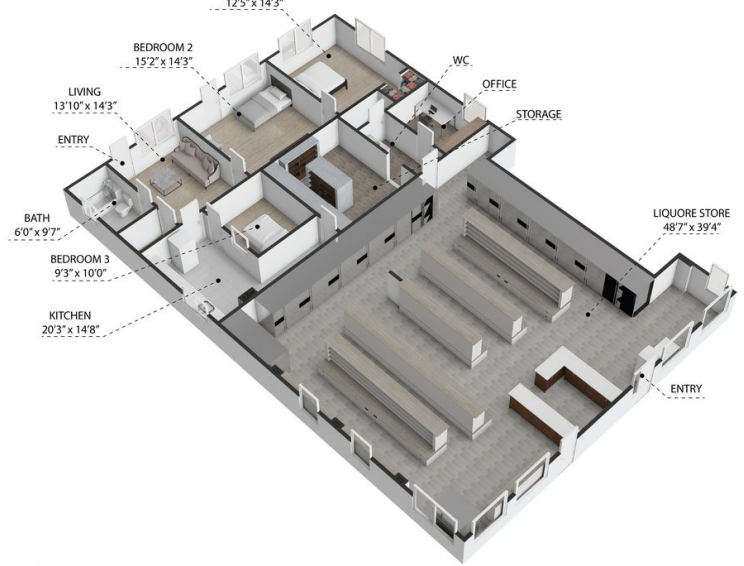
www.16390monterey.com

****verify all included data with City of Morgan Hill****

RE/MAX Gold
501 Vineyard Town Ctr,
Morgan Hill, CA 95037

RE/MAX, LLC is an Equal Opportunity Employer and supports the Fair Housing Act and equal opportunity housing.

©2024 RE/MAX, LLC. Each RE/MAX Office Independently Owned and Operated.



16390 Monterey Road, Morgan Hill, CA, 95037

TOTAL APPROX. FLOOR AREA 3,075 SQFT

While every attempt has been made to ensure the accuracy of the floor plan contained here, measurements of doors,

