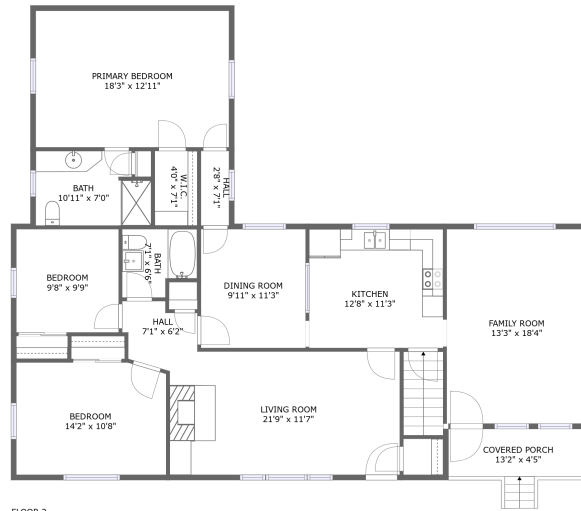
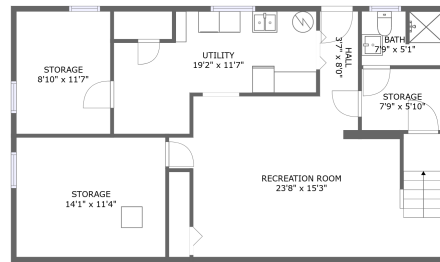


2162 Virginia Byway, Bedford, Bedford County, Virginia, United States, 24523




FLOOR 2



FLOOR 1

Property summary


 **0** Garages

 **3** Bedrooms

 **3** Bathrooms

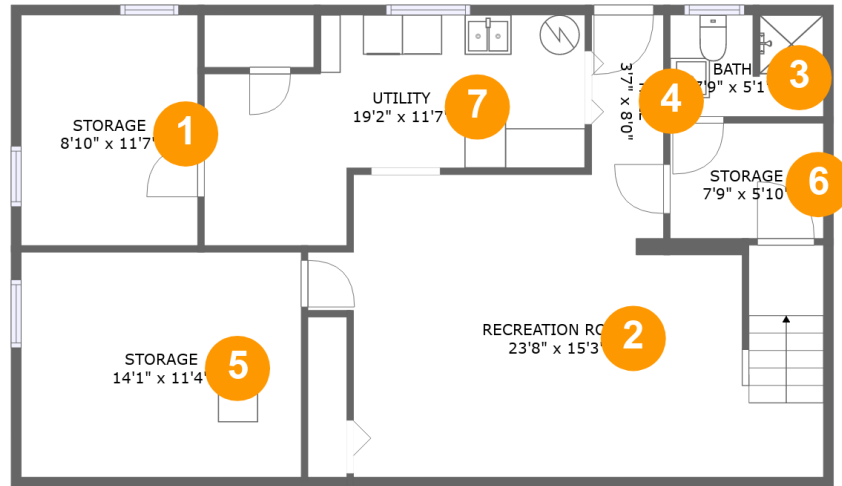
 **0** Half baths

 **2** Floors

 **2,281** Gross living area sqft

 **2,727** Total sqft

2162 Virginia Byway, Bedford, Bedford County, Virginia, United States, 24523



Room dimensions

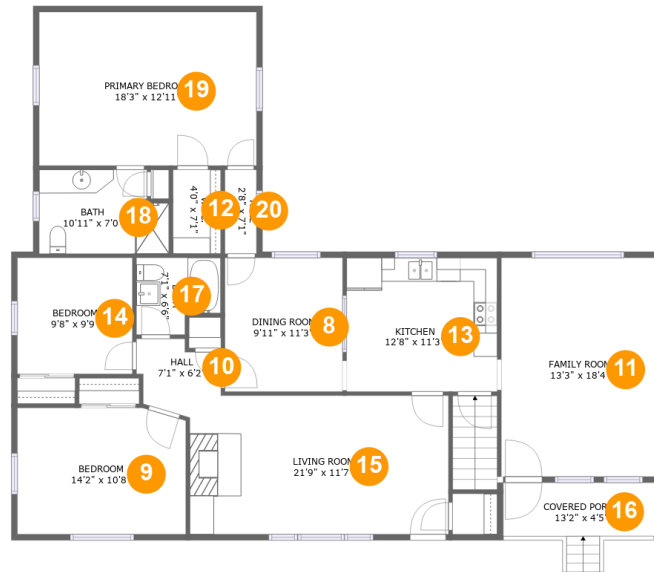
Floor 1

Total sqft: 1003

Living area: 617

#		Dimensions	sqft	Counted as living area
1	Storage	8'10" x 11'7"	103 sq. ft	No
2	Recreation Room	23'8" x 15'3"	333 sq. ft	Yes
3	Bath	7'9" x 5'1"	38 sq. ft	No
4	Hall	3'7" x 8'0"	29 sq. ft	Yes
5	Storage	14'1" x 11'4"	159 sq. ft	No
6	Storage	7'9" x 5'10"	45 sq. ft	No
7	Utility	19'2" x 11'7"	158 sq. ft	Yes

2162 Virginia Byway, Bedford, Bedford County, Virginia, United States, 24523



Room dimensions

Floor 2

Total sqft: 1724 Living area: 1664

#		Dimensions	sqft	Counted as living area
8	Dining Room	9'11" x 11'3"	111 sq. ft	Yes
9	Bedroom	14'2" x 10'8"	149 sq. ft	Yes
10	Hall	7'1" x 6'2"	37 sq. ft	Yes
11	Family Room	13'3" x 18'4"	244 sq. ft	Yes
12	W.I.C.	4'0" x 7'1"	28 sq. ft	Yes
13	Kitchen	12'8" x 11'3"	143 sq. ft	Yes
14	Bedroom	9'8" x 9'9"	95 sq. ft	Yes
15	Living Room	21'9" x 11'7"	251 sq. ft	Yes
16	Covered Porch	13'2" x 4'5"	60 sq. ft	No
17	Bath	7'1" x 6'6"	41 sq. ft	Yes
18	Bath	10'11" x 7'0"	72 sq. ft	Yes

**2162 Virginia Byway, Bedford, Bedford County,
Virginia, United States, 24523**

#		Dimensions	sqft	Counted as living area
19	Primary Bedroom	18'3" x 12'11"	236 sq. ft	Yes
20	Hall	2'8" x 7'1"	19 sq. ft	Yes

2162 Virginia Byway, Bedford, Bedford County, Virginia, United States, 24523

1 Floor 1 - Storage



Dimensions: 8'10" x 11'7"
Area: 103 sq. ft
Counted as living area: No

Heated: No
Finished: No
Enclosed: No
Contiguous: Yes
Permitted: Yes
Wet space: No
Addition: No
Conversion: No

2 Floor 1 - Recreation Room

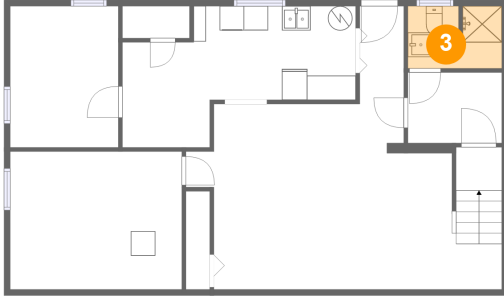


Dimensions: 23'8" x 15'3"
Area: 333 sq. ft
Counted as living area: Yes

Heated: Yes
Finished: Yes
Enclosed: Yes
Contiguous: Yes
Permitted: Yes
Wet space: No
Addition: No
Conversion: No

2162 Virginia Byway, Bedford, Bedford County,
Virginia, United States, 24523

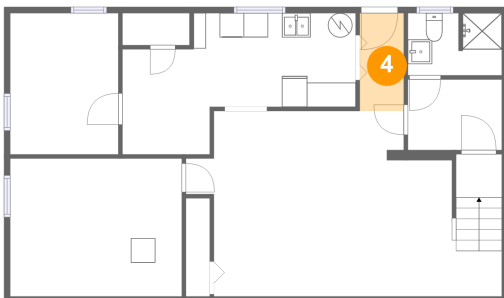
3 Floor 1 - Bath



Dimensions: 7'9" x 5'1"
Area: 38 sq. ft
Counted as living area: No

Heated: Yes
Finished: Yes
Enclosed: Yes
Contiguous: No
Permitted: Yes
Wet space: Yes
Addition: No
Conversion: No

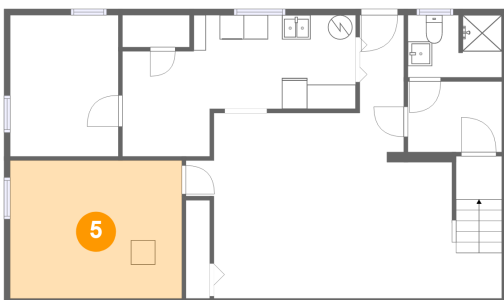
4 Floor 1 - Hall



Dimensions: 3'7" x 8'0"
Area: 29 sq. ft
Counted as living area: Yes

Heated: Yes
Finished: Yes
Enclosed: Yes
Contiguous: Yes
Permitted: Yes
Wet space: No
Addition: No
Conversion: No

5 Floor 1 - Storage

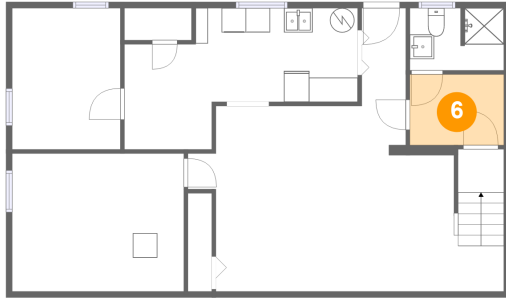


Dimensions: 14'1" x 11'4"
Area: 159 sq. ft
Counted as living area: No

Heated: No
Finished: No
Enclosed: No
Contiguous: Yes
Permitted: Yes
Wet space: No
Addition: No
Conversion: No

2162 Virginia Byway, Bedford, Bedford County,
Virginia, United States, 24523

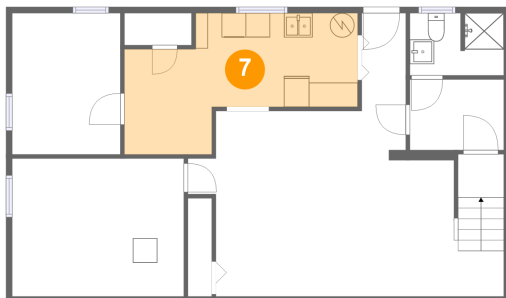
6 Floor 1 - Storage



Dimensions: 7'9" x 5'10"
Area: 45 sq. ft
Counted as living area: No

Heated: No
Finished: No
Enclosed: No
Contiguous: Yes
Permitted: Yes
Wet space: No
Addition: No
Conversion: No

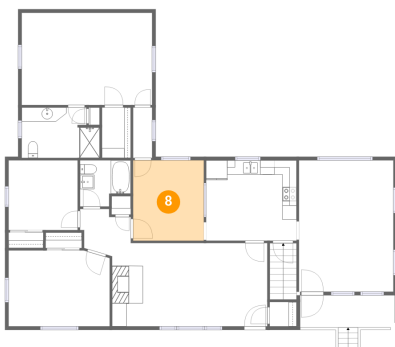
7 Floor 1 - Utility



Dimensions: 19'2" x 11'7"
Area: 158 sq. ft
Counted as living area: Yes

Heated: Yes
Finished: Yes
Enclosed: Yes
Contiguous: Yes
Permitted: Yes
Wet space: No
Addition: No
Conversion: No

8 Floor 2 - Dining Room

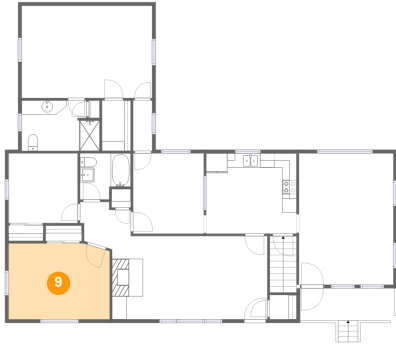


Dimensions: 9'11" x 11'3"
Area: 111 sq. ft
Counted as living area: Yes

Heated: Yes
Finished: Yes
Enclosed: Yes
Contiguous: Yes
Permitted: Yes
Wet space: No
Addition: No
Conversion: No

2162 Virginia Byway, Bedford, Bedford County, Virginia, United States, 24523

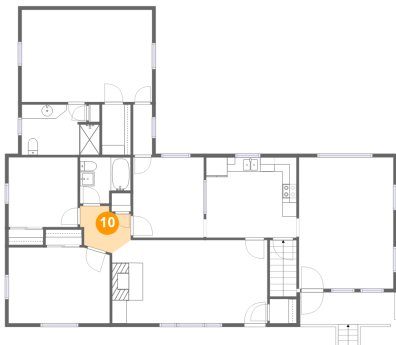
9 Floor 2 - Bedroom



Dimensions: 14'2" x 10'8"
Area: 149 sq. ft
Counted as living area: Yes

Heated: Yes
Finished: Yes
Enclosed: Yes
Contiguous: Yes
Permitted: Yes
Wet space: No
Addition: No
Conversion: No

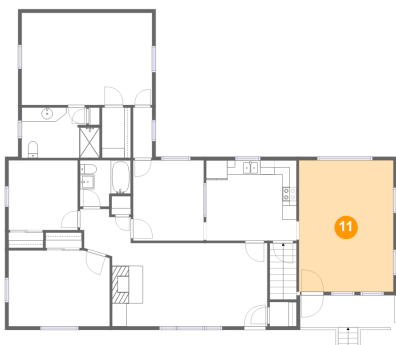
10 Floor 2 - Hall



Dimensions: 7'1" x 6'2"
Area: 37 sq. ft
Counted as living area: Yes

Heated: Yes
Finished: Yes
Enclosed: Yes
Contiguous: Yes
Permitted: Yes
Wet space: No
Addition: No
Conversion: No

11 Floor 2 - Family Room



Dimensions: 13'3" x 18'4"
Area: 244 sq. ft
Counted as living area: Yes

Heated: Yes
Finished: Yes
Enclosed: Yes
Contiguous: Yes
Permitted: Yes
Wet space: No
Addition: No
Conversion: No

**2162 Virginia Byway, Bedford, Bedford County,
Virginia, United States, 24523**

12 Floor 2 - W.I.C.



Dimensions: 4'0" x 7'1"
Area: 28 sq. ft
Counted as living area: Yes

Heated: Yes
Finished: Yes
Enclosed: Yes
Contiguous: Yes
Permitted: Yes
Wet space: No
Addition: No
Conversion: No

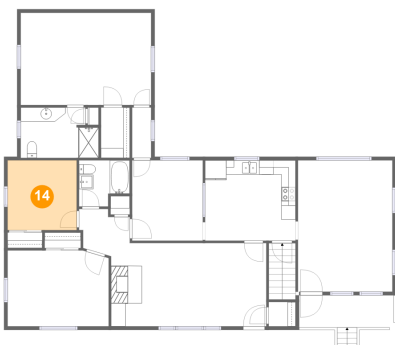
13 Floor 2 - Kitchen



Dimensions: 12'8" x 11'3"
Area: 143 sq. ft
Counted as living area: Yes

Heated: Yes
Finished: Yes
Enclosed: Yes
Contiguous: Yes
Permitted: Yes
Wet space: No
Addition: No
Conversion: No

14 Floor 2 - Bedroom



Dimensions: 9'8" x 9'9"
Area: 95 sq. ft
Counted as living area: Yes

Heated: Yes
Finished: Yes
Enclosed: Yes
Contiguous: Yes
Permitted: Yes
Wet space: No
Addition: No
Conversion: No

2162 Virginia Byway, Bedford, Bedford County, Virginia, United States, 24523

15 Floor 2 - Living Room



Dimensions: 21'9" x 11'7"
Area: 251 sq. ft
Counted as living area: Yes

Heated: Yes
Finished: Yes
Enclosed: Yes
Contiguous: Yes
Permitted: Yes
Wet space: No
Addition: No
Conversion: No

16 Floor 2 - Covered Porch



Dimensions: 13'2" x 4'5"
Area: 60 sq. ft
Counted as living area: No

Heated: No
Finished: Yes
Enclosed: No
Contiguous: Yes
Permitted: Yes
Wet space: No
Addition: No
Conversion: No

17 Floor 2 - Bath



Dimensions: 7'1" x 6'6"
Area: 41 sq. ft
Counted as living area: Yes

Heated: Yes
Finished: Yes
Enclosed: Yes
Contiguous: Yes
Permitted: Yes
Wet space: Yes
Addition: No
Conversion: No

2162 Virginia Byway, Bedford, Bedford County, Virginia, United States, 24523

18 Floor 2 - Bath



Dimensions: 10'11" x 7'0"
Area: 72 sq. ft
Counted as living area: Yes

Heated: Yes
Finished: Yes
Enclosed: Yes
Contiguous: Yes
Permitted: Yes
Wet space: Yes
Addition: No
Conversion: No

19 Floor 2 - Primary Bedroom



Dimensions: 18'3" x 12'11"
Area: 236 sq. ft
Counted as living area: Yes

Heated: Yes
Finished: Yes
Enclosed: Yes
Contiguous: Yes
Permitted: Yes
Wet space: No
Addition: No
Conversion: No

20 Floor 2 - Hall



Dimensions: 2'8" x 7'1"
Area: 19 sq. ft
Counted as living area: Yes

Heated: Yes
Finished: Yes
Enclosed: Yes
Contiguous: Yes
Permitted: Yes
Wet space: No
Addition: No
Conversion: No