

FLOOR 1

RECREATION ROOM
27'9" x 19'6"

ROOM
13'0" x 15'5"

STORAGE
9'3" x 6'2"

HALL
7'1" x 10'4"

UTILITY
8'5" x 7'7"

WET BAR
8'1" x 7'1"

FLOOR 2

LIVING ROOM
17'8" x 15'3"

DINING AREA
13'1" x 6'10"

KITCHEN
15'0" x 13'5"

OFFICE
7'3" x 9'3"

HALL
7'7" x 11'2"

FOYER
7'1" x 14'1"

PANTRY
8'6" x 6'6"

W.C.
7'1" x 4'11"

BORCH
12'4" x 12'0"

GARAGE
29'11" x 32'0"

FLOOR 3

BEDROOM
11'0" x 12'0"

BATH
5'11" x 6'3"

BEDROOM
11'1" x 6'10"

PRIMARY BEDROOM
12'9" x 15'3"

HALL
22'1" x 6'9"

W.I.C.
9'8" x 3'2"

W.I.C.
5'7" x 3'0"

W.I.C.
7'8" x 3'11"

BEDROOM
10'11" x 14'9"

CLOSET
5'8" x 3'4"

BATH
9'1" x 14'9"

W.I.C.
11'9" x 6'8"

OPEN TO BELOW
10'5" x 10'0"

Excluded: Storage 61 sq. ft, Utility 49 sq. ft, Garage 638 sq. ft, Patio 181 sq. ft, Porch 139 sq. ft, Open to below 81 sq. ft, Walls: 267 sq. ft

Property summary



3 Floors



4 Bedrooms




3 Bathrooms

Home report

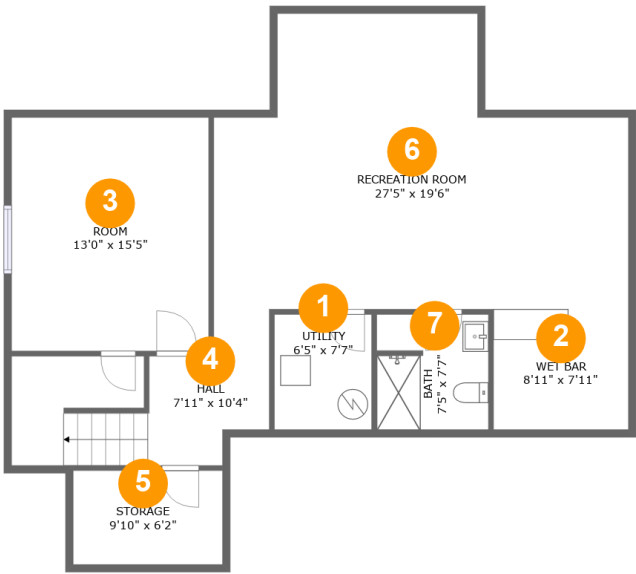


6107 South 197th Street, Gretna, Sarpy County,
Nebraska, United States, 68028

 **1**
Half baths

 **1**
Garages

6107 South 197th Street, Gretna, Sarpy County,
Nebraska, United States, 68028

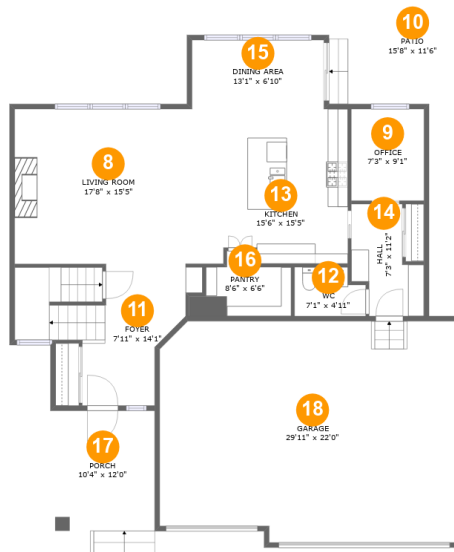


Room dimensions

Floor 1 Below ground Total:917sqft Excluded: 110sqft

#		Max Dimensions	sqft	Included
1	Utility	6'5" x 7'7"	49 sq. ft	No
2	Wet Bar	8'11" x 7'11"	71 sq. ft	Yes
3	Room	13'0" x 15'5"	201 sq. ft	Yes
4	Hall	7'11" x 10'4"	77 sq. ft	Yes
5	Storage	9'10" x 6'2"	61 sq. ft	No
6	Recreation Room	27'5" x 19'6"	437 sq. ft	Yes
7	Bath	7'5" x 7'7"	55 sq. ft	Yes

**6107 South 197th Street, Gretna, Sarpy County,
Nebraska, United States, 68028**



Room dimensions

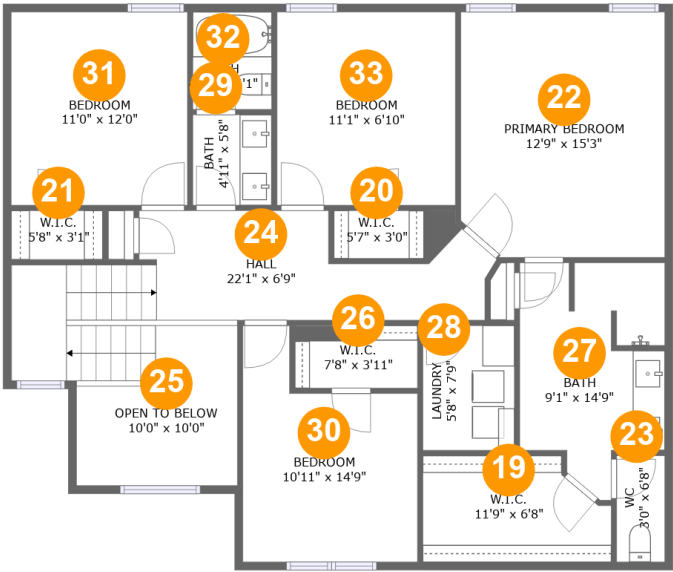
Floor 2

Total:1031sqft

Excluded: 958sqft

#		Max Dimensions	sqft	Included
8	Living Room	17'8" x 15'5"	272 sq. ft	Yes
9	Office	7'3" x 9'1"	66 sq. ft	Yes
10	Patio	15'8" x 11'6"	181 sq. ft	No
11	Foyer	7'11" x 14'1"	172 sq. ft	Yes
12	WC	7'1" x 4'11"	31 sq. ft	Yes
13	Kitchen	15'6" x 15'5"	233 sq. ft	Yes
14	Hall	7'3" x 11'2"	62 sq. ft	Yes
15	Dining Area	13'1" x 6'10"	90 sq. ft	Yes
16	Pantry	8'6" x 6'6"	49 sq. ft	Yes
17	Porch	10'4" x 12'0"	139 sq. ft	No
18	Garage	29'11" x 22'0"	638 sq. ft	No

6107 South 197th Street, Gretna, Sarpy County,
Nebraska, United States, 68028



Room dimensions

Floor 3 Total:1218sqft Excluded: 81sqft

#		Max Dimensions	sqft	Included
19	W.I.C.	11'9" x 6'8"	70 sq. ft	Yes
20	W.I.C.	5'7" x 3'0"	17 sq. ft	Yes
21	W.I.C.	5'8" x 3'1"	17 sq. ft	Yes
22	Primary Bedroom	12'9" x 15'3"	191 sq. ft	Yes
23	WC	3'0" x 6'8"	20 sq. ft	Yes
24	Hall	22'1" x 6'9"	188 sq. ft	Yes
25	Open To Below	10'0" x 10'0"	81 sq. ft	No
26	W.I.C.	7'8" x 3'11"	30 sq. ft	Yes
27	Bath	9'1" x 14'9"	110 sq. ft	Yes
28	Laundry	5'8" x 7'9"	44 sq. ft	Yes
29	Bath	4'11" x 5'8"	28 sq. ft	Yes

Home report

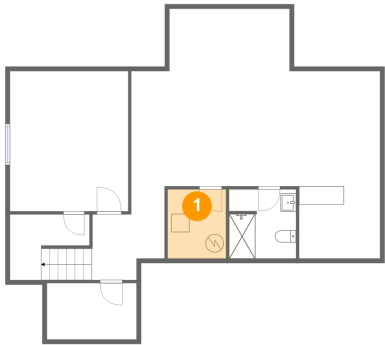


**6107 South 197th Street, Gretna, Sarpy County,
Nebraska, United States, 68028**

#		Max Dimensions	sqft	Included
30	Bedroom	10'11" x 14'9"	127 sq. ft	Yes
31	Bedroom	11'0" x 12'0"	132 sq. ft	Yes
32	Bath	4'11" x 6'1"	30 sq. ft	Yes
33	Bedroom	11'1" x 6'10"	134 sq. ft	Yes

6107 South 197th Street, Gretna, Sarpy County,
Nebraska, United States, 68028

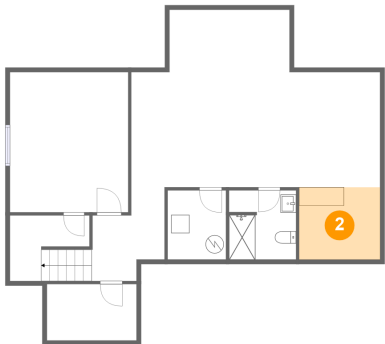
1 Floor 1 - Utility



Max Dimensions: 6'5" x 7'7"
Calculated Area: 49 sq. ft
Included: No

Heated: Yes
Finished: No
Enclosed: Yes
Contiguous: Yes
Permitted: Yes
Wet space: No
Addition: No
Conversion: No

2 Floor 1 - Wet Bar

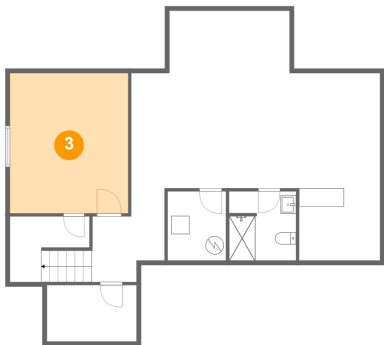


Max Dimensions: 8'11" x 7'11"
Calculated Area: 71 sq. ft
Included: Yes

Heated: Yes
Finished: Yes
Enclosed: Yes
Contiguous: Yes
Permitted: Yes
Wet space: No
Addition: No
Conversion: No

6107 South 197th Street, Gretna, Sarpy County,
Nebraska, United States, 68028

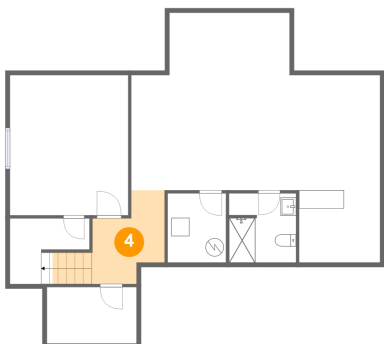
3 Floor 1 - Room



Max Dimensions: 13'0" x 15'5"
Calculated Area: 201 sq. ft
Included: Yes

Heated: Yes
Finished: Yes
Enclosed: Yes
Contiguous: Yes
Permitted: Yes
Wet space: No
Addition: No
Conversion: No

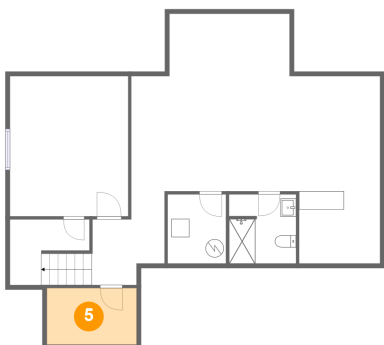
4 Floor 1 - Hall



Max Dimensions: 7'11" x 10'4"
Calculated Area: 77 sq. ft
Included: Yes

Heated: Yes
Finished: Yes
Enclosed: Yes
Contiguous: Yes
Permitted: Yes
Wet space: No
Addition: No
Conversion: No

5 Floor 1 - Storage

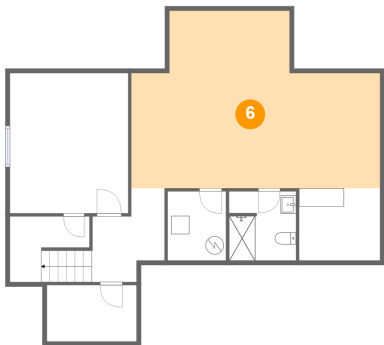


Max Dimensions: 9'10" x 6'2"
Calculated Area: 61 sq. ft
Included: No

Heated: No
Finished: No
Enclosed: No
Contiguous: Yes
Permitted: Yes
Wet space: No
Addition: No
Conversion: No

6107 South 197th Street, Gretna, Sarpy County,
Nebraska, United States, 68028

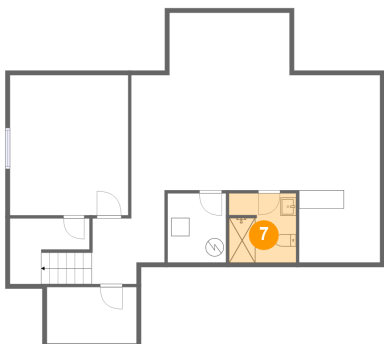
6 Floor 1 - Recreation Room



Max Dimensions: 27'5" x 19'6"
Calculated Area: 437 sq. ft
Included: Yes

Heated: Yes
Finished: Yes
Enclosed: Yes
Contiguous: Yes
Permitted: Yes
Wet space: No
Addition: No
Conversion: No

7 Floor 1 - Bath



Max Dimensions: 7'5" x 7'7"
Calculated Area: 55 sq. ft
Included: Yes

Heated: Yes
Finished: Yes
Enclosed: Yes
Contiguous: Yes
Permitted: Yes
Wet space: Yes
Addition: No
Conversion: No

8 Floor 2 - Living Room



Max Dimensions: 17'8" x 15'5"
Calculated Area: 272 sq. ft
Included: Yes

Heated: Yes
Finished: Yes
Enclosed: Yes
Contiguous: Yes
Permitted: Yes
Wet space: No
Addition: No
Conversion: No

6107 South 197th Street, Gretna, Sarpy County,
Nebraska, United States, 68028

9 Floor 2 - Office



Max Dimensions: 7'3" x 9'1"
Calculated Area: 66 sq. ft
Included: Yes

Heated: Yes
Finished: Yes
Enclosed: Yes
Contiguous: Yes
Permitted: Yes
Wet space: No
Addition: No
Conversion: No

10 Floor 2 - Patio



Max Dimensions: 15'8" x 11'6"
Calculated Area: 181 sq. ft
Included: No

Heated: No
Finished: Yes
Enclosed: No
Contiguous: Yes
Permitted: Yes
Wet space: No
Addition: No
Conversion: No

11 Floor 2 - Foyer



Max Dimensions: 7'11" x 14'1"
Calculated Area: 172 sq. ft
Included: Yes

Heated: Yes
Finished: Yes
Enclosed: Yes
Contiguous: Yes
Permitted: Yes
Wet space: No
Addition: No
Conversion: No

6107 South 197th Street, Gretna, Sarpy County,
Nebraska, United States, 68028

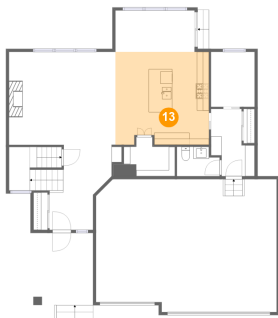
12 Floor 2 - WC



Max Dimensions: 7'1" x
4'11"
Calculated Area: 31 sq. ft
Included: Yes

Heated: Yes
Finished: Yes
Enclosed: Yes
Contiguous:
Yes
Permitted: Yes
Wet space: Yes
Addition: No
Conversion: No

13 Floor 2 - Kitchen



Max Dimensions: 15'6" x
15'5"
Calculated Area: 233 sq. ft
Included: Yes

Heated: Yes
Finished: Yes
Enclosed: Yes
Contiguous:
Yes
Permitted: Yes
Wet space: No
Addition: No
Conversion: No

14 Floor 2 - Hall



Max Dimensions: 7'3" x
11'2"
Calculated Area: 62 sq. ft
Included: Yes

Heated: Yes
Finished: Yes
Enclosed: Yes
Contiguous:
Yes
Permitted: Yes
Wet space: No
Addition: No
Conversion: No

6107 South 197th Street, Gretna, Sarpy County,
Nebraska, United States, 68028

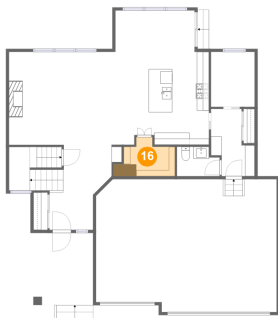
15 Floor 2 - Dining Area



Max Dimensions: 13'1" x 6'10"
Calculated Area: 90 sq. ft
Included: Yes

Heated: Yes
Finished: Yes
Enclosed: Yes
Contiguous: Yes
Permitted: Yes
Wet space: No
Addition: No
Conversion: No

16 Floor 2 - Pantry



Max Dimensions: 8'6" x 6'6"
Calculated Area: 49 sq. ft
Included: Yes

Heated: Yes
Finished: Yes
Enclosed: Yes
Contiguous: Yes
Permitted: Yes
Wet space: No
Addition: No
Conversion: No

17 Floor 2 - Porch



Max Dimensions: 10'4" x 12'0"
Calculated Area: 139 sq. ft
Included: No

Heated: No
Finished: Yes
Enclosed: No
Contiguous: Yes
Permitted: Yes
Wet space: No
Addition: No
Conversion: No

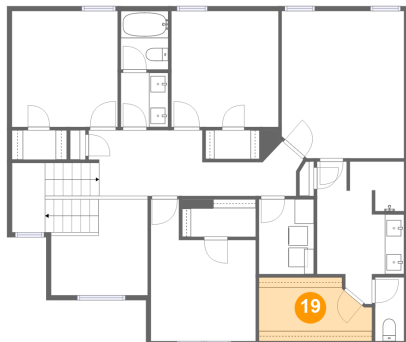
18 Floor 2 - Garage



Max Dimensions: 29'11" x 22'0"
Calculated Area: 638 sq. ft
Included: No

Heated: No
Finished: No
Enclosed: Yes
Contiguous: Yes
Permitted: Yes
Wet space: No
Addition: No
Conversion: No

19 Floor 3 - W.I.C.



Max Dimensions: 11'9" x 6'8"
Calculated Area: 70 sq. ft
Included: Yes

Heated: Yes
Finished: Yes
Enclosed: Yes
Contiguous: Yes
Permitted: Yes
Wet space: No
Addition: No
Conversion: No

20 Floor 3 - W.I.C.



Max Dimensions: 5'7" x 3'0"
Calculated Area: 17 sq. ft
Included: Yes

Heated: Yes
Finished: Yes
Enclosed: Yes
Contiguous: Yes
Permitted: Yes
Wet space: No
Addition: No
Conversion: No

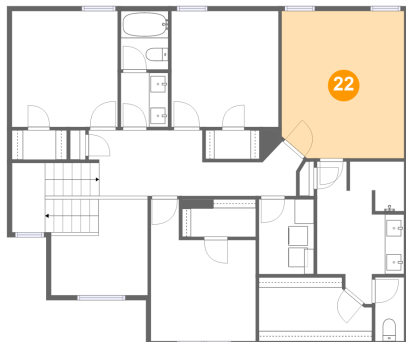
21 Floor 3 - W.I.C.



Max Dimensions: 5'8" x 3'1"
Calculated Area: 17 sq. ft
Included: Yes

Heated: Yes
Finished: Yes
Enclosed: Yes
Contiguous: Yes
Permitted: Yes
Wet space: No
Addition: No
Conversion: No

22 Floor 3 - Primary Bedroom



Max Dimensions: 12'9" x 15'3"
Calculated Area: 191 sq. ft
Included: Yes

Heated: Yes
Finished: Yes
Enclosed: Yes
Contiguous: Yes
Permitted: Yes
Wet space: No
Addition: No
Conversion: No

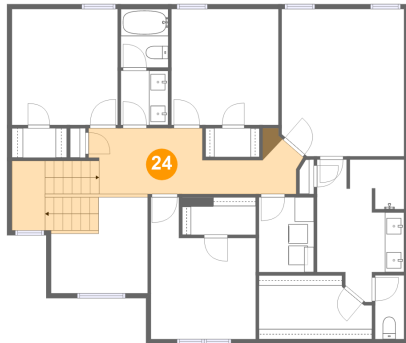
23 Floor 3 - WC



Max Dimensions: 3'0" x 6'8"
Calculated Area: 20 sq. ft
Included: Yes

Heated: Yes
Finished: Yes
Enclosed: Yes
Contiguous: Yes
Permitted: Yes
Wet space: Yes
Addition: No
Conversion: No

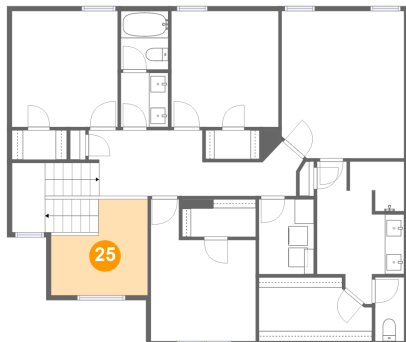
24 Floor 3 - Hall



Max Dimensions: 22'1" x 6'9"
Calculated Area: 188 sq. ft
Included: Yes

Heated: Yes
Finished: Yes
Enclosed: Yes
Contiguous: Yes
Permitted: Yes
Wet space: No
Addition: No
Conversion: No

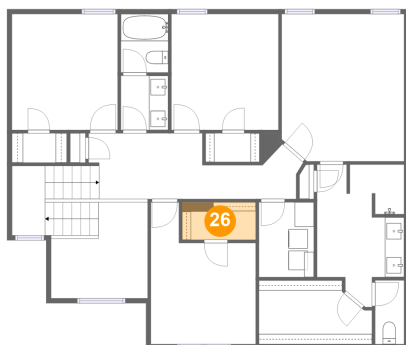
25 Floor 3 - Open To Below



Max Dimensions: 10'0" x 10'0"
Calculated Area: 81 sq. ft
Included: No

Heated: No
Finished: No
Enclosed: No
Contiguous: Yes
Permitted: No
Wet space: No
Addition: No
Conversion: No

26 Floor 3 - W.I.C.



Max Dimensions: 7'8" x 3'11"
Calculated Area: 30 sq. ft
Included: Yes

Heated: Yes
Finished: Yes
Enclosed: Yes
Contiguous: Yes
Permitted: Yes
Wet space: No
Addition: No
Conversion: No

6107 South 197th Street, Gretna, Sarpy County,
Nebraska, United States, 68028

27 Floor 3 - Bath



Max Dimensions: 9'1" x 14'9"
Calculated Area: 110 sq. ft
Included: Yes

Heated: Yes
Finished: Yes
Enclosed: Yes
Contiguous: Yes
Permitted: Yes
Wet space: Yes
Addition: No
Conversion: No

28 Floor 3 - Laundry



Max Dimensions: 5'8" x 7'9"
Calculated Area: 44 sq. ft
Included: Yes

Heated: Yes
Finished: Yes
Enclosed: Yes
Contiguous: Yes
Permitted: Yes
Wet space: No
Addition: No
Conversion: No

29 Floor 3 - Bath



Max Dimensions: 4'11" x 5'8"
Calculated Area: 28 sq. ft
Included: Yes

Heated: Yes
Finished: Yes
Enclosed: Yes
Contiguous: Yes
Permitted: Yes
Wet space: Yes
Addition: No
Conversion: No

6107 South 197th Street, Gretna, Sarpy County,
Nebraska, United States, 68028

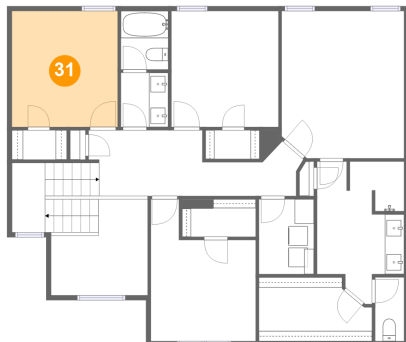
30 Floor 3 - Bedroom



Max Dimensions: 10'11" x 14'9"
Calculated Area: 127 sq. ft
Included: Yes

Heated: Yes
Finished: Yes
Enclosed: Yes
Contiguous: Yes
Permitted: Yes
Wet space: No
Addition: No
Conversion: No

31 Floor 3 - Bedroom



Max Dimensions: 11'0" x 12'0"
Calculated Area: 132 sq. ft
Included: Yes

Heated: Yes
Finished: Yes
Enclosed: Yes
Contiguous: Yes
Permitted: Yes
Wet space: No
Addition: No
Conversion: No

32 Floor 3 - Bath



Max Dimensions: 4'11" x 6'1"
Calculated Area: 30 sq. ft
Included: Yes

Heated: Yes
Finished: Yes
Enclosed: Yes
Contiguous: Yes
Permitted: Yes
Wet space: Yes
Addition: No
Conversion: No

6107 South 197th Street, Gretna, Sarpy County,
Nebraska, United States, 68028

33 Floor 3 - Bedroom



Max Dimensions: 11'1" x 6'10"
Calculated Area: 134 sq. ft
Included: Yes

Heated: Yes
Finished: Yes
Enclosed: Yes
Contiguous: Yes
Permitted: Yes
Wet space: No
Addition: No
Conversion: No