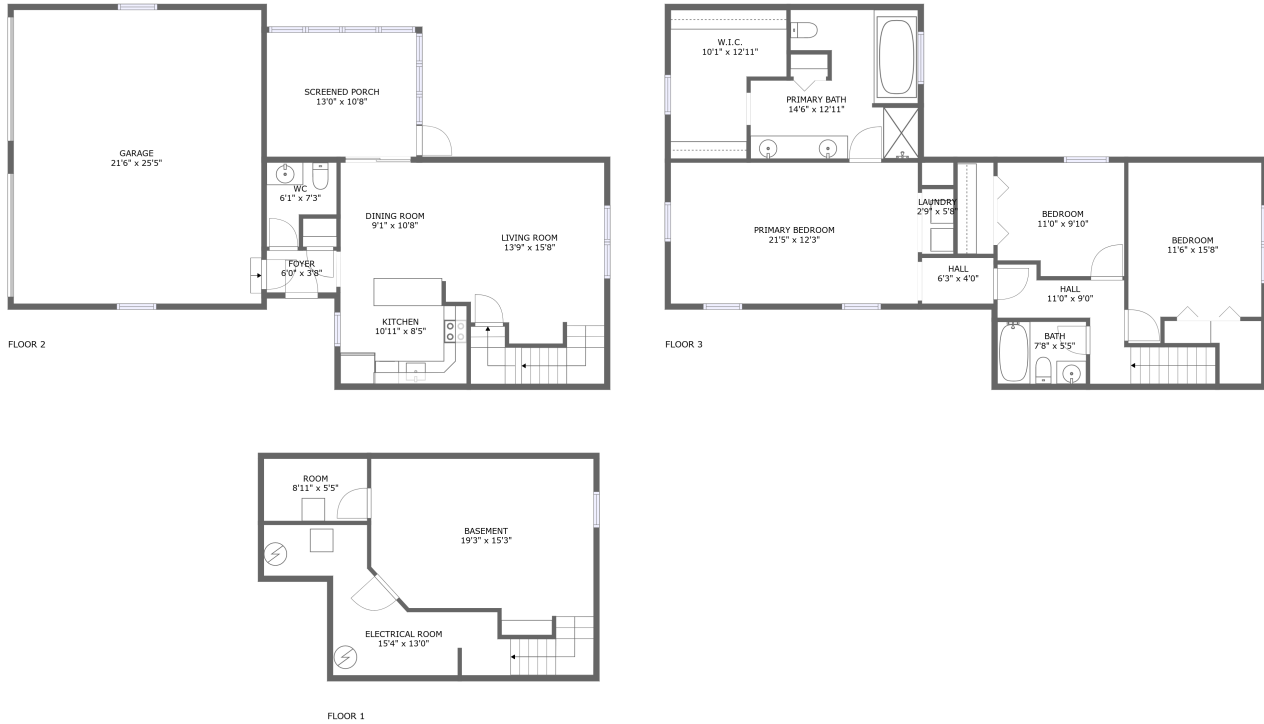



300 Mack Drive, Hinckley, DeKalb County, Illinois, United States, 60520



Property summary

 **1** Garages

 **3** Bedrooms

 **2** Bathrooms

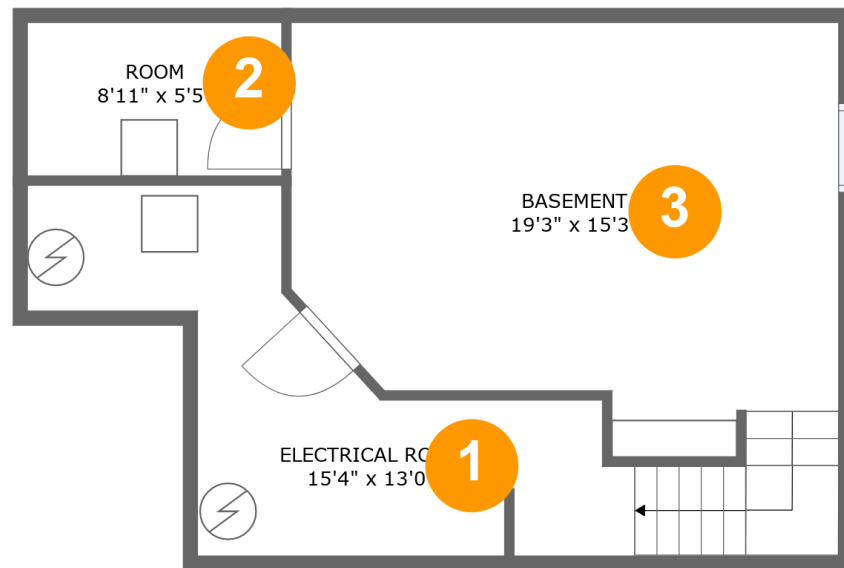
 **1** Half baths

 **3** Floors

 **1,985**
Gross living
area sqft

 **2,958**
Total sqft

300 Mack Drive, Hinckley, DeKalb County, Illinois,
United States, 60520



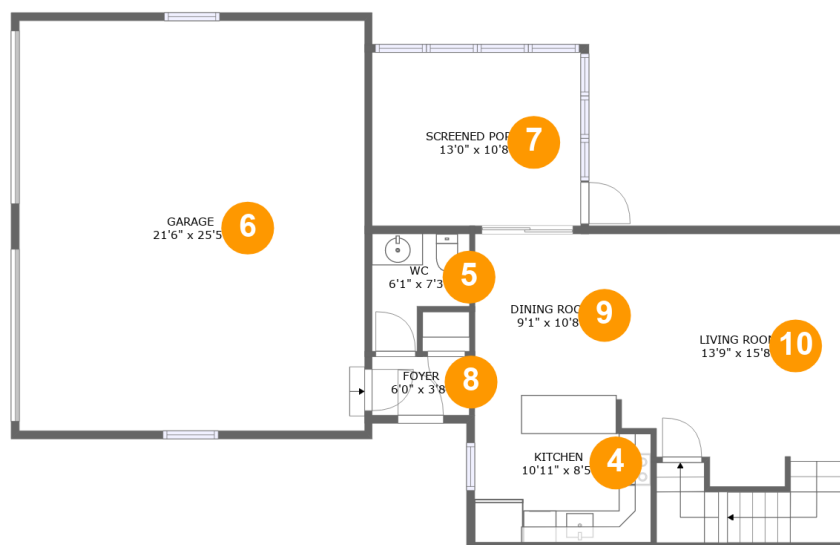
Room dimensions

Floor 1

Total sqft: 520 Living area: 286

#		Dimensions	sqft	Counted as living area
1	Electrical Room	15'4" x 13'0"	159 sq. ft	No
2	Room	8'11" x 5'5"	48 sq. ft	No
3	Basement	19'3" x 15'3"	263 sq. ft	Yes

300 Mack Drive, Hinckley, DeKalb County, Illinois, United States, 60520



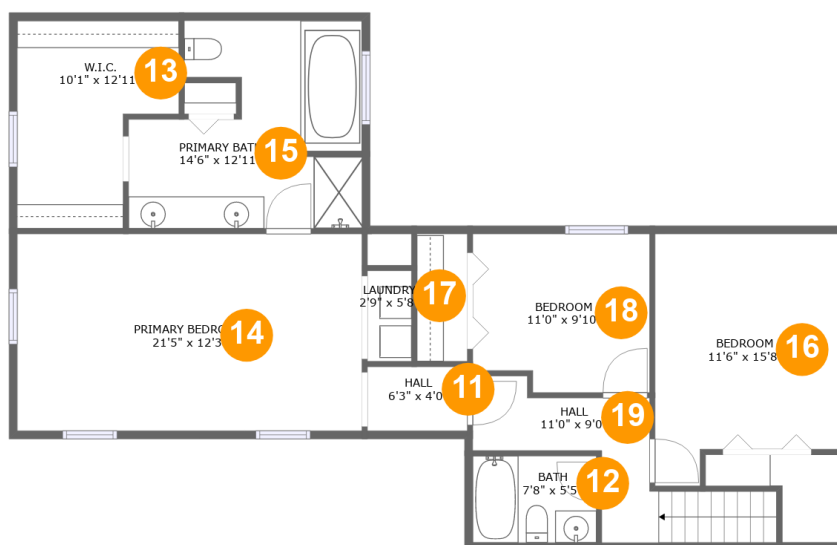
Room dimensions

Floor 2

Total sqft: 1292 Living area: 553

#		Dimensions	sqft	Counted as living area
4	Kitchen	10'11" x 8'5"	89 sq. ft	Yes
5	WC	6'1" x 7'3"	35 sq. ft	Yes
6	Garage	21'6" x 25'5"	546 sq. ft	No
7	Screened Porch	13'0" x 10'8"	140 sq. ft	No
8	Foyer	6'0" x 3'8"	22 sq. ft	Yes
9	Dining Room	9'1" x 10'8"	98 sq. ft	Yes
10	Living Room	13'9" x 15'8"	244 sq. ft	Yes

300 Mack Drive, Hinckley, DeKalb County, Illinois,
United States, 60520



Room dimensions

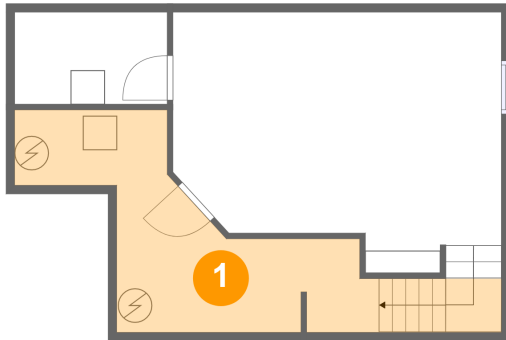
Floor 3

Total sqft: 1146 Living area: 1146

#		Dimensions	sqft	Counted as living area
11	Hall	6'3" x 4'0"	25 sq. ft	Yes
12	Bath	7'8" x 5'5"	41 sq. ft	Yes
13	W.I.C.	10'1" x 12'11"	105 sq. ft	Yes
14	Primary Bedroom	21'5" x 12'3"	262 sq. ft	Yes
15	Primary Bath	14'6" x 12'11"	155 sq. ft	Yes
16	Bedroom	11'6" x 15'8"	161 sq. ft	Yes
17	Laundry	2'9" x 5'8"	15 sq. ft	Yes
18	Bedroom	11'0" x 9'10"	103 sq. ft	Yes
19	Hall	11'0" x 9'0"	83 sq. ft	Yes

**300 Mack Drive, Hinckley, DeKalb County, Illinois,
United States, 60520**

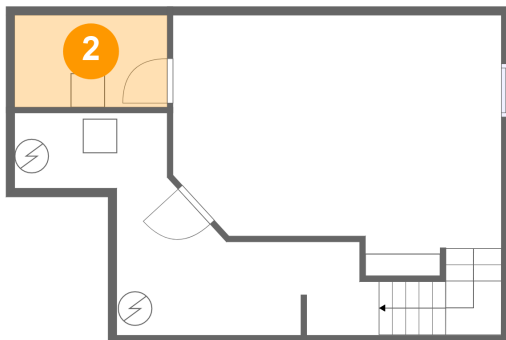
1 Floor 1 - Electrical Room



Dimensions: 15'4" x 13'0"
Area: 159 sq. ft
Counted as living area: No

Heated: No
Finished: No
Enclosed: Yes
Contiguous: Yes
Permitted: Yes
Wet space: No
Addition: No
Conversion: No

2 Floor 1 - Room



Dimensions: 8'11" x 5'5"
Area: 48 sq. ft
Counted as living area: No

Heated: Yes
Finished: No
Enclosed: Yes
Contiguous: Yes
Permitted: Yes
Wet space: No
Addition: No
Conversion: No

**300 Mack Drive, Hinckley, DeKalb County, Illinois,
United States, 60520**

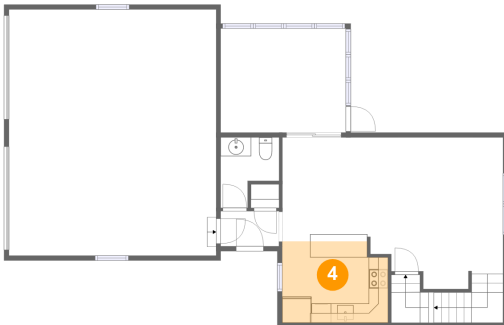
3 Floor 1 - Basement



Dimensions: 19'3" x 15'3"
Area: 263 sq. ft
Counted as living area: Yes

Heated: Yes
Finished: Yes
Enclosed: Yes
Contiguous: Yes
Permitted: Yes
Wet space: No
Addition: No
Conversion: No

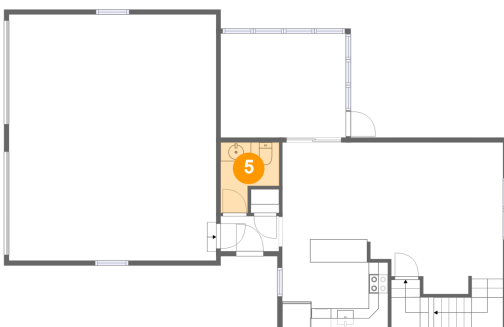
4 Floor 2 - Kitchen



Dimensions: 10'11" x 8'5"
Area: 89 sq. ft
Counted as living area: Yes

Heated: Yes
Finished: Yes
Enclosed: Yes
Contiguous: Yes
Permitted: Yes
Wet space: No
Addition: No
Conversion: No

5 Floor 2 - WC

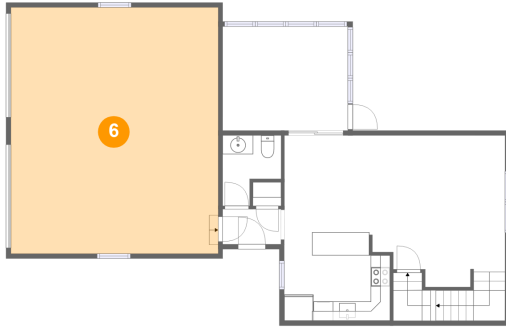


Dimensions: 6'1" x 7'3"
Area: 35 sq. ft
Counted as living area: Yes

Heated: Yes
Finished: Yes
Enclosed: Yes
Contiguous: Yes
Permitted: Yes
Wet space: Yes
Addition: No
Conversion: No

**300 Mack Drive, Hinckley, DeKalb County, Illinois,
United States, 60520**

6 Floor 2 - Garage



Dimensions: 21'6" x 25'5"
Area: 546 sq. ft
Counted as living area: No

Heated: No
Finished: No
Enclosed: Yes
Contiguous: Yes
Permitted: Yes
Wet space: No
Addition: No
Conversion: No

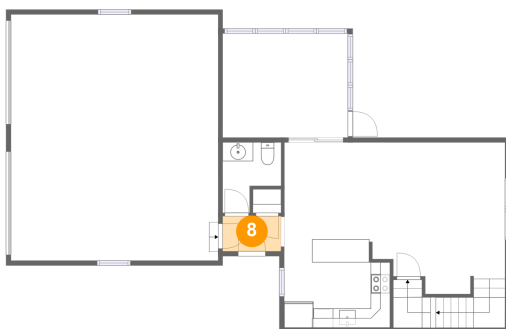
7 Floor 2 - Screened Porch



Dimensions: 13'0" x 10'8"
Area: 140 sq. ft
Counted as living area: No

Heated: No
Finished: Yes
Enclosed: No
Contiguous: Yes
Permitted: Yes
Wet space: No
Addition: No
Conversion: No

8 Floor 2 - Foyer

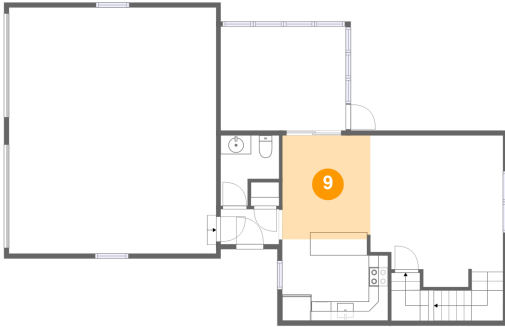


Dimensions: 6'0" x 3'8"
Area: 22 sq. ft
Counted as living area: Yes

Heated: Yes
Finished: Yes
Enclosed: Yes
Contiguous: Yes
Permitted: Yes
Wet space: No
Addition: No
Conversion: No

300 Mack Drive, Hinckley, DeKalb County, Illinois, United States, 60520

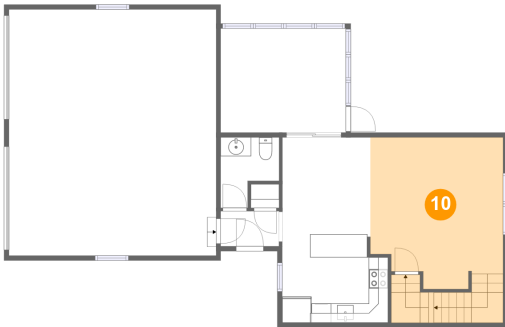
9 Floor 2 - Dining Room



Dimensions: 9'1" x 10'8"
Area: 98 sq. ft
Counted as living area: Yes

Heated: Yes
Finished: Yes
Enclosed: Yes
Contiguous: Yes
Permitted: Yes
Wet space: No
Addition: No
Conversion: No

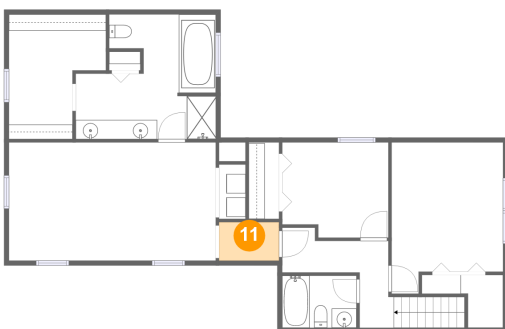
10 Floor 2 - Living Room



Dimensions: 13'9" x 15'8"
Area: 244 sq. ft
Counted as living area: Yes

Heated: Yes
Finished: Yes
Enclosed: Yes
Contiguous: Yes
Permitted: Yes
Wet space: No
Addition: No
Conversion: No

11 Floor 3 - Hall

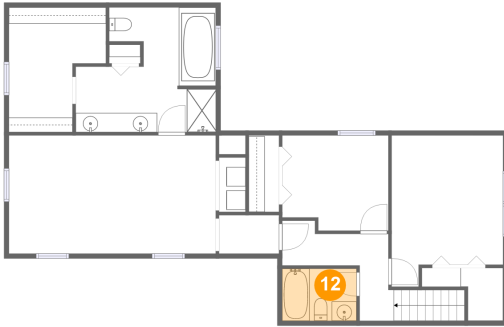


Dimensions: 6'3" x 4'0"
Area: 25 sq. ft
Counted as living area: Yes

Heated: Yes
Finished: Yes
Enclosed: Yes
Contiguous: Yes
Permitted: Yes
Wet space: No
Addition: No
Conversion: No

**300 Mack Drive, Hinckley, DeKalb County, Illinois,
United States, 60520**

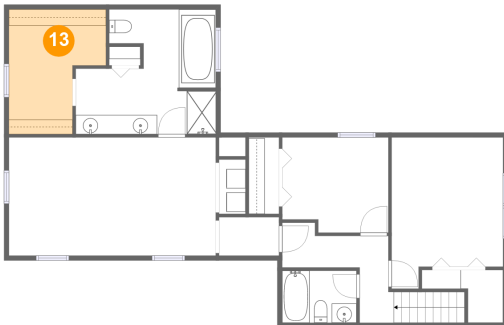
12 Floor 3 - Bath



Dimensions: 7'8" x 5'5"
Area: 41 sq. ft
Counted as living area: Yes

Heated: Yes
Finished: Yes
Enclosed: Yes
Contiguous: Yes
Permitted: Yes
Wet space: Yes
Addition: No
Conversion: No

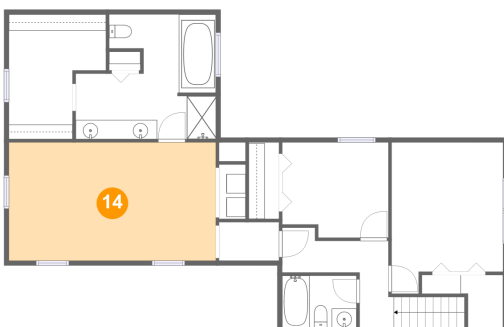
13 Floor 3 - W.I.C.



Dimensions: 10'1" x 12'11"
Area: 105 sq. ft
Counted as living area: Yes

Heated: Yes
Finished: Yes
Enclosed: Yes
Contiguous: Yes
Permitted: Yes
Wet space: No
Addition: No
Conversion: No

14 Floor 3 - Primary Bedroom

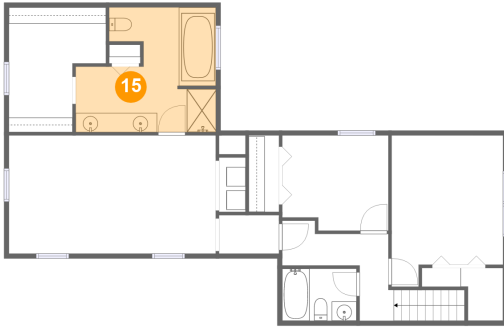


Dimensions: 21'5" x 12'3"
Area: 262 sq. ft
Counted as living area: Yes

Heated: Yes
Finished: Yes
Enclosed: Yes
Contiguous: Yes
Permitted: Yes
Wet space: No
Addition: No
Conversion: No

**300 Mack Drive, Hinckley, DeKalb County, Illinois,
United States, 60520**

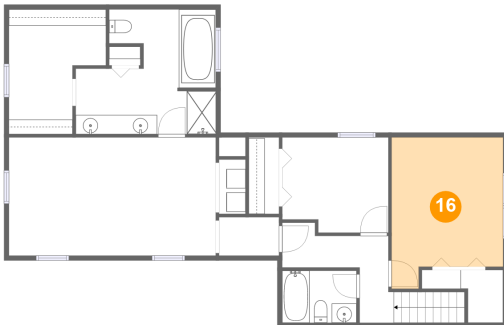
15 Floor 3 - Primary Bath



Dimensions: 14'6" x 12'11"
Area: 155 sq. ft
Counted as living area: Yes

Heated: Yes
Finished: Yes
Enclosed: Yes
Contiguous: Yes
Permitted: Yes
Wet space: Yes
Addition: No
Conversion: No

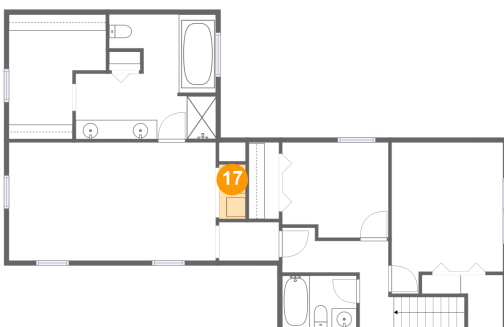
16 Floor 3 - Bedroom



Dimensions: 11'6" x 15'8"
Area: 161 sq. ft
Counted as living area: Yes

Heated: Yes
Finished: Yes
Enclosed: Yes
Contiguous: Yes
Permitted: Yes
Wet space: No
Addition: No
Conversion: No

17 Floor 3 - Laundry

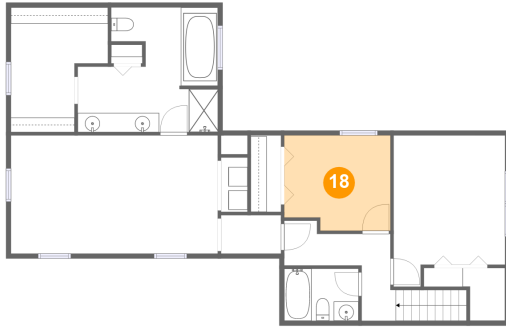


Dimensions: 2'9" x 5'8"
Area: 15 sq. ft
Counted as living area: Yes

Heated: Yes
Finished: Yes
Enclosed: Yes
Contiguous: Yes
Permitted: Yes
Wet space: No
Addition: No
Conversion: No

**300 Mack Drive, Hinckley, DeKalb County, Illinois,
United States, 60520**

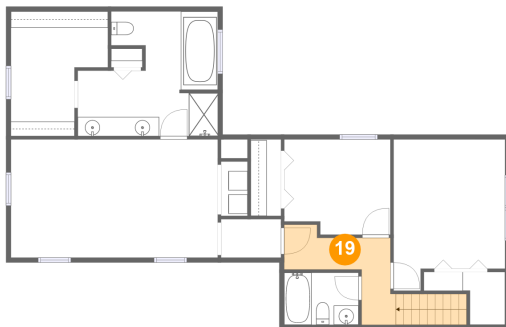
18 Floor 3 - Bedroom



Dimensions: 11'0" x 9'10"
Area: 103 sq. ft
Counted as living area: Yes

Heated: Yes
Finished: Yes
Enclosed: Yes
Contiguous: Yes
Permitted: Yes
Wet space: No
Addition: No
Conversion: No

19 Floor 3 - Hall



Dimensions: 11'0" x 9'0"
Area: 83 sq. ft
Counted as living area: Yes

Heated: Yes
Finished: Yes
Enclosed: Yes
Contiguous: Yes
Permitted: Yes
Wet space: No
Addition: No
Conversion: No