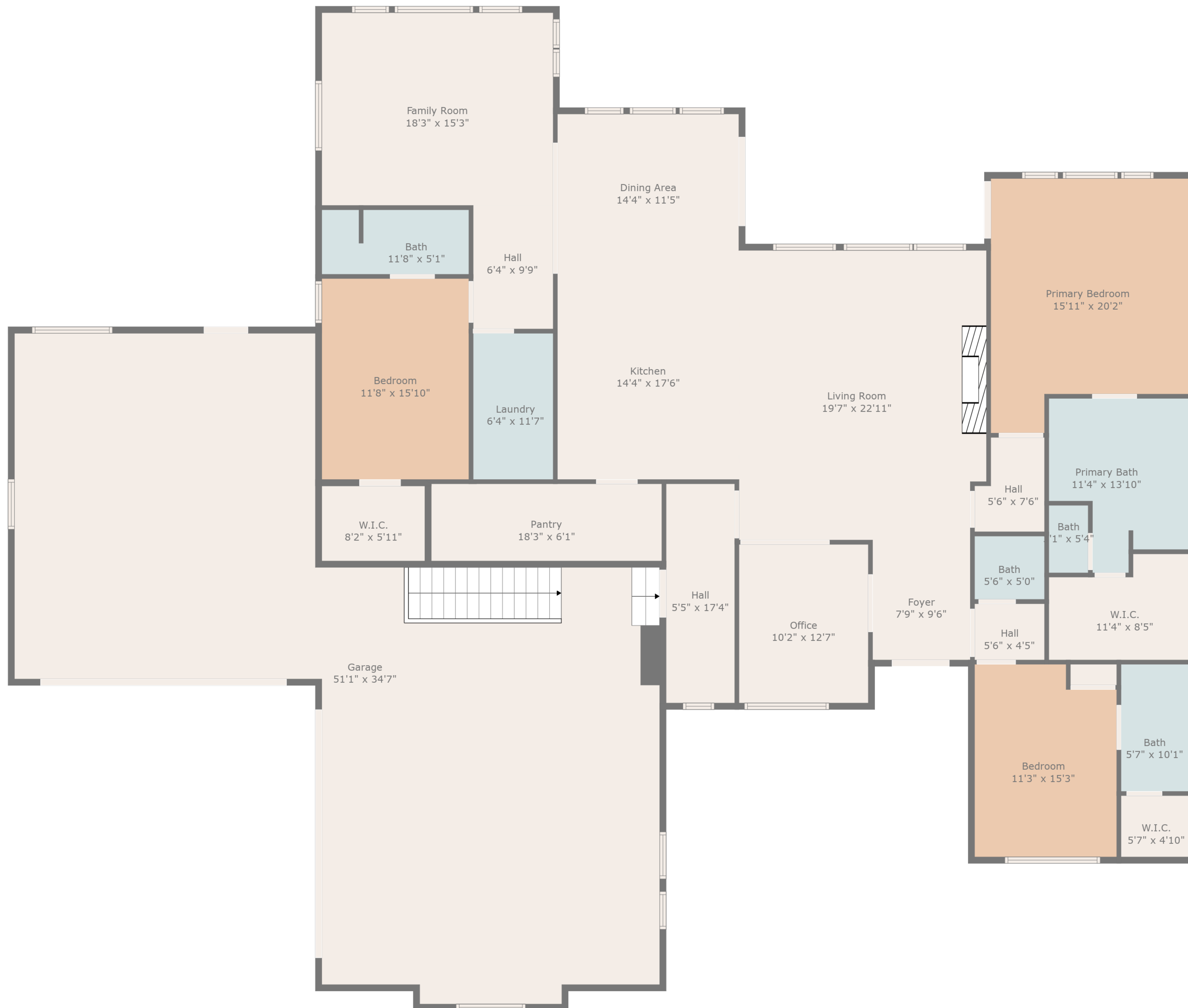


Basement
68'10" x 52'4"

TOTAL: 2933 sq. ft

BELOW GROUND: 0 sq. ft, FLOOR 2: 2933 sq. ft

EXCLUDED AREAS: BASEMENT: 2836 sq. ft, UNDEFINED: 78 sq. ft, GARAGE: 1556 sq. ft,
WALLS: 369 sq. ft

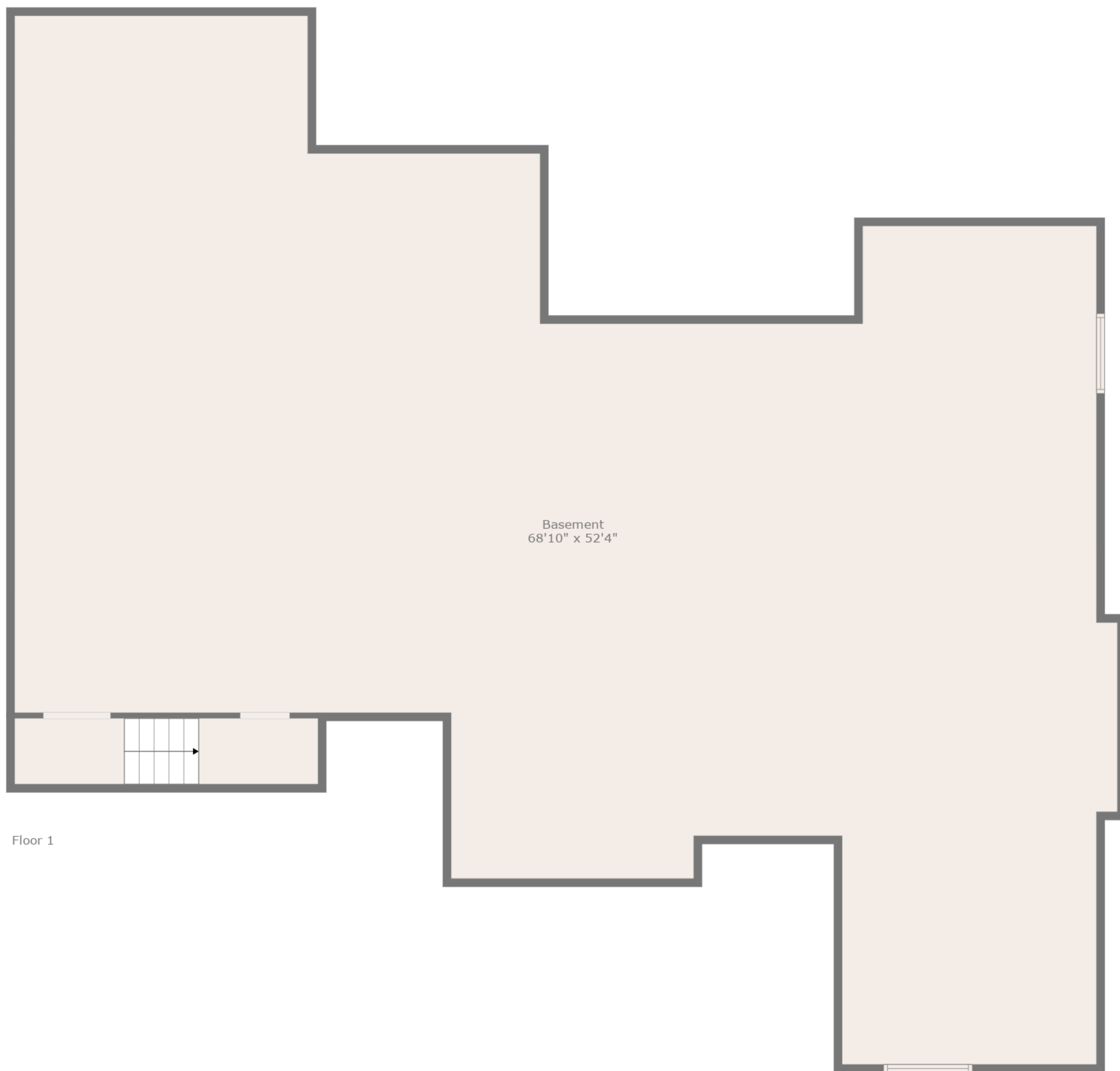


TOTAL: 2933 sq. ft

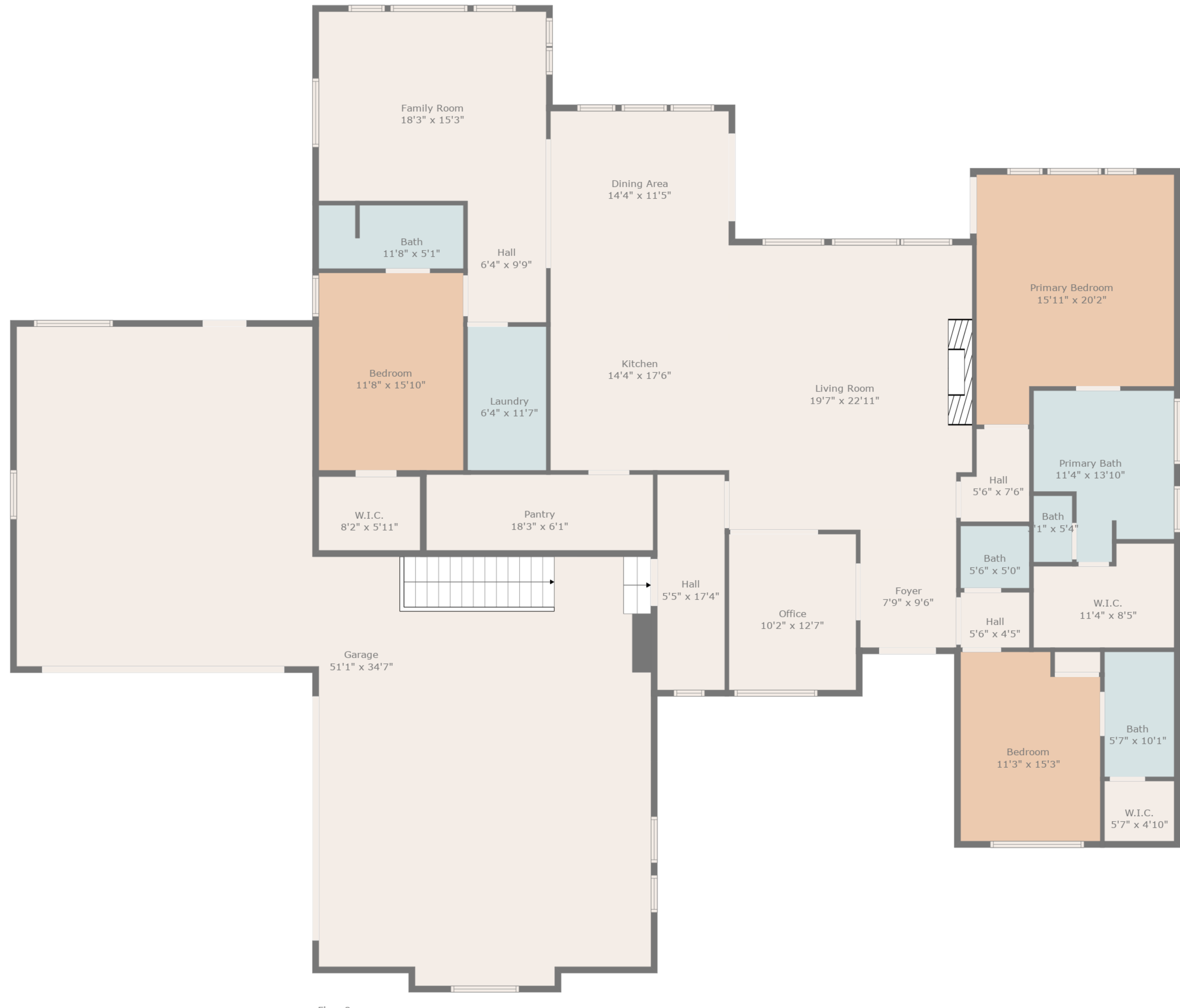
BELOW GROUND: 0 sq. ft, FLOOR 2: 2933 sq. ft

EXCLUDED AREAS: BASEMENT: 2836 sq. ft, UNDEFINED: 78 sq. ft, GARAGE: 1556 sq. ft,
WALLS: 369 sq. ft





Floor 1



Floor 2

TOTAL: 2933 sq. ft
 BELOW GROUND: 0 sq. ft, FLOOR 2: 2933 sq. ft
 EXCLUDED AREAS: BASEMENT: 2836 sq. ft, UNDEFINED: 78 sq. ft, GARAGE: 1556 sq. ft,
 WALLS: 369 sq. ft

