



Home report


162 Laurel Ridge Drive, Roanoke, Roanoke County, Virginia,
United States, 24019




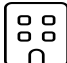
Property summary


 **1** Garages


 **3** Bedrooms

 **2** Bathrooms

 **0** Half baths

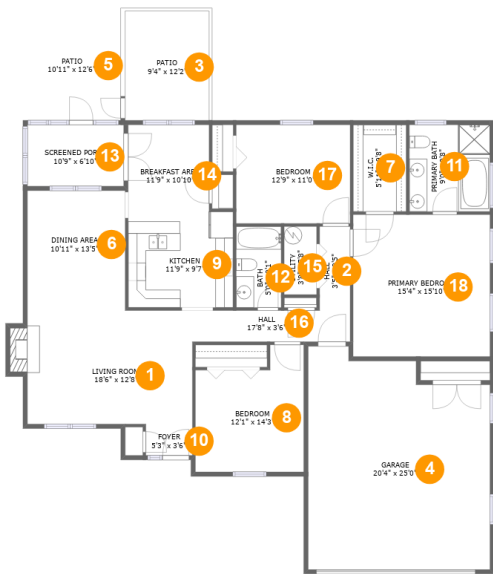
 **1** Floors

 **1,669** Gross living area sqft

 **2,526** Total sqft

Home report

162 Laurel Ridge Drive, Roanoke, Roanoke County, Virginia,
United States, 24019



Room dimensions

Floor 1 Total sqft: 2526 Living area: 1669

#		Dimensions	sqft	Counted as living area
1	Living Room	18'6" x 12'8"	244 sq. ft	Yes
2	Hall	3'5" x 9'5"	32 sq. ft	Yes
3	Patio	9'4" x 12'2"	115 sq. ft	No
4	Garage	20'4" x 25'0"	460 sq. ft	No
5	Patio	10'11" x 12'6"	137 sq. ft	No
6	Dining Area	10'11" x 13'5"	147 sq. ft	Yes
7	W.I.C.	5'11" x 9'8"	58 sq. ft	Yes
8	Bedroom	12'1" x 14'3"	149 sq. ft	Yes
9	Kitchen	11'9" x 9'7"	113 sq. ft	Yes
10	Foyer	5'3" x 3'6"	18 sq. ft	Yes
11	Primary Bath	9'0" x 9'8"	88 sq. ft	Yes

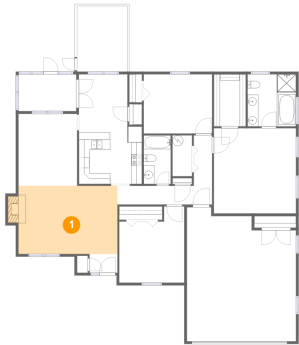
Home report

**162 Laurel Ridge Drive, Roanoke, Roanoke County, Virginia,
United States, 24019**

#		Dimensions	sqft	Counted as living area
12	Bath	5'0" x 9'1"	46 sq. ft	Yes
13	Screened Porch	10'9" x 6'10"	74 sq. ft	No
14	Breakfast Area	11'9" x 10'10"	101 sq. ft	Yes
15	Utility	3'8" x 7'8"	28 sq. ft	Yes
16	Hall	17'8" x 3'6"	62 sq. ft	Yes
17	Bedroom	12'9" x 11'0"	141 sq. ft	Yes
18	Primary Bedroom	15'4" x 15'10"	243 sq. ft	Yes

162 Laurel Ridge Drive, Roanoke, Roanoke County, Virginia,
United States, 24019

1 Floor 1 - Living Room



Dimensions: 18'6" x 12'8"
Area: 244 sq. ft
Counted as living area: Yes

Heated: Yes
Finished: Yes
Enclosed: Yes
Contiguous: Yes
Permitted: Yes
Wet space: No
Addition: No
Conversion: No

2 Floor 1 - Hall



Dimensions: 3'5" x 9'5"
Area: 32 sq. ft
Counted as living area: Yes

Heated: Yes
Finished: Yes
Enclosed: Yes
Contiguous: Yes
Permitted: Yes
Wet space: No
Addition: No
Conversion: No

Home report

162 Laurel Ridge Drive, Roanoke, Roanoke County, Virginia,
United States, 24019

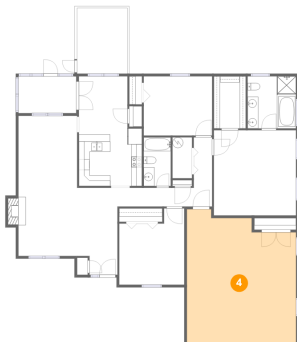
3 Floor 1 - Patio



Dimensions: 9'4" x 12'2"
Area: 115 sq. ft
Counted as living area: No

Heated: No
Finished: Yes
Enclosed: No
Contiguous: Yes
Permitted: Yes
Wet space: No
Addition: No
Conversion: No

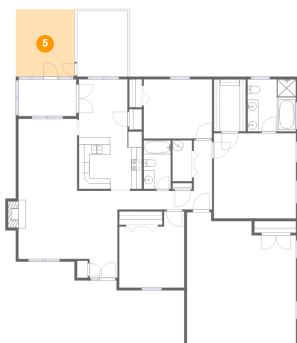
4 Floor 1 - Garage



Dimensions: 20'4" x 25'0"
Area: 460 sq. ft
Counted as living area: No

Heated: No
Finished: No
Enclosed: Yes
Contiguous: Yes
Permitted: Yes
Wet space: No
Addition: No
Conversion: No

5 Floor 1 - Patio



Dimensions: 10'11" x 12'6"
Area: 137 sq. ft
Counted as living area: No

Heated: No
Finished: Yes
Enclosed: No
Contiguous: Yes
Permitted: Yes
Wet space: No
Addition: No
Conversion: No

Home report

162 Laurel Ridge Drive, Roanoke, Roanoke County, Virginia,
United States, 24019

6 Floor 1 - Dining Area



Dimensions: 10'11" x 13'5"
Area: 147 sq. ft
Counted as living area: Yes

Heated: Yes
Finished: Yes
Enclosed: Yes
Contiguous: Yes
Permitted: Yes
Wet space: No
Addition: No
Conversion: No

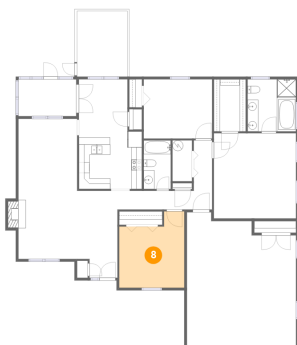
7 Floor 1 - W.I.C.



Dimensions: 5'11" x 9'8"
Area: 58 sq. ft
Counted as living area: Yes

Heated: Yes
Finished: Yes
Enclosed: Yes
Contiguous: Yes
Permitted: Yes
Wet space: No
Addition: No
Conversion: No

8 Floor 1 - Bedroom



Dimensions: 12'1" x 14'3"
Area: 149 sq. ft
Counted as living area: Yes

Heated: Yes
Finished: Yes
Enclosed: Yes
Contiguous: Yes
Permitted: Yes
Wet space: No
Addition: No
Conversion: No

Home report

162 Laurel Ridge Drive, Roanoke, Roanoke County, Virginia,
United States, 24019

9 Floor 1 - Kitchen



Dimensions: 11'9" x 9'7"
Area: 113 sq. ft
Counted as living area: Yes

Heated: Yes
Finished: Yes
Enclosed: Yes
Contiguous: Yes
Permitted: Yes
Wet space: No
Addition: No
Conversion: No

10 Floor 1 - Foyer



Dimensions: 5'3" x 3'6"
Area: 18 sq. ft
Counted as living area: Yes

Heated: Yes
Finished: Yes
Enclosed: Yes
Contiguous: Yes
Permitted: Yes
Wet space: No
Addition: No
Conversion: No

11 Floor 1 - Primary Bath



Dimensions: 9'0" x 9'8"
Area: 88 sq. ft
Counted as living area: Yes

Heated: Yes
Finished: Yes
Enclosed: Yes
Contiguous: Yes
Permitted: Yes
Wet space: Yes
Addition: No
Conversion: No

162 Laurel Ridge Drive, Roanoke, Roanoke County, Virginia,
United States, 24019

12 Floor 1 - Bath



Dimensions: 5'0" x 9'1"
Area: 46 sq. ft
Counted as living area: Yes

Heated: Yes
Finished: Yes
Enclosed: Yes
Contiguous: Yes
Permitted: Yes
Wet space: Yes
Addition: No
Conversion: No

13 Floor 1 - Screened Porch



Dimensions: 10'9" x 6'10"
Area: 74 sq. ft
Counted as living area: No

Heated: No
Finished: Yes
Enclosed: No
Contiguous: Yes
Permitted: Yes
Wet space: No
Addition: No
Conversion: No

14 Floor 1 - Breakfast Area



Dimensions: 11'9" x 10'10"
Area: 101 sq. ft
Counted as living area: Yes

Heated: Yes
Finished: Yes
Enclosed: Yes
Contiguous: Yes
Permitted: Yes
Wet space: No
Addition: No
Conversion: No

Home report

162 Laurel Ridge Drive, Roanoke, Roanoke County, Virginia,
United States, 24019

15 Floor 1 - Utility



Dimensions: 3'8" x 7'8"
Area: 28 sq. ft
Counted as living area: Yes

Heated: Yes
Finished: Yes
Enclosed: Yes
Contiguous: Yes
Permitted: Yes
Wet space: No
Addition: No
Conversion: No

16 Floor 1 - Hall



Dimensions: 17'8" x 3'6"
Area: 62 sq. ft
Counted as living area: Yes

Heated: Yes
Finished: Yes
Enclosed: Yes
Contiguous: Yes
Permitted: Yes
Wet space: No
Addition: No
Conversion: No

17 Floor 1 - Bedroom



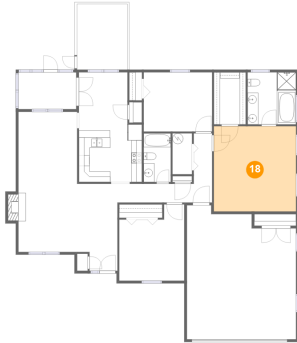
Dimensions: 12'9" x 11'0"
Area: 141 sq. ft
Counted as living area: Yes

Heated: Yes
Finished: Yes
Enclosed: Yes
Contiguous: Yes
Permitted: Yes
Wet space: No
Addition: No
Conversion: No

Home report

162 Laurel Ridge Drive, Roanoke, Roanoke County, Virginia,
United States, 24019

18 Floor 1 - Primary Bedroom



Dimensions: 15'4" x 15'10"
Area: 243 sq. ft
Counted as living area: Yes

Heated: Yes
Finished: Yes
Enclosed: Yes
Contiguous: Yes
Permitted: Yes
Wet space: No
Addition: No
Conversion: No