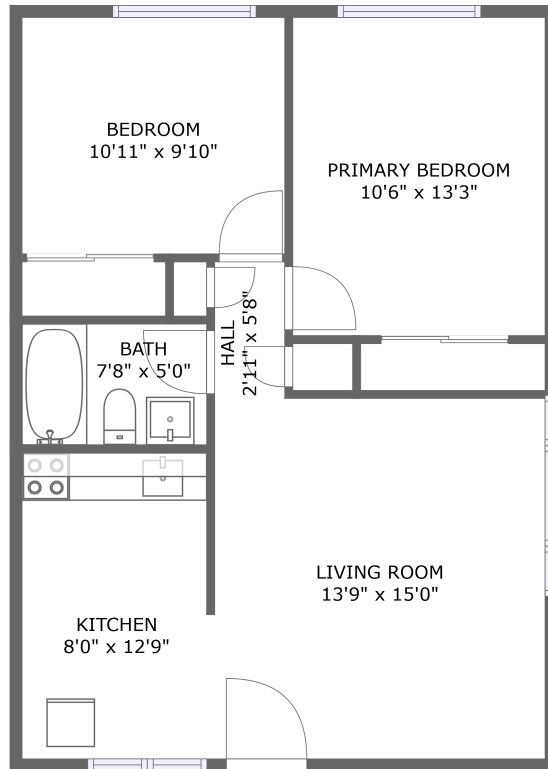


2329 Channing Way, South Campus, Berkeley, Alameda County, California, United States,

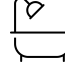



FLOOR 1

Property Summary

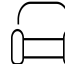
 **0** garages

 **2** bedrooms

 **1** bathrooms

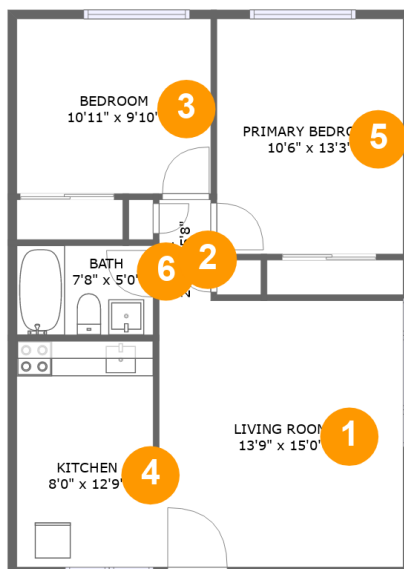
 **0** half baths

 **1** floors

 **672** Gross Living Area sqft

 **672** total sqft

2329 Channing Way, South Campus, Berkeley, Alameda County, California, United States,



Room Dimensions

Floor 1

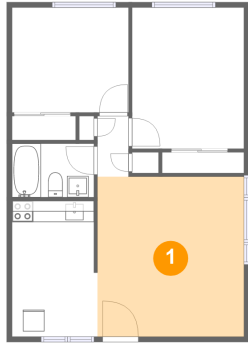
Total sqft: 672

Living area: 672

#	Room name	Dimensions	Area (sqft)	Counted as Living Area
1	Living Room	13'9" x 15'0"	206 sq. ft	Yes
2	Hall	2'11" x 5'8"	17 sq. ft	Yes
3	Bedroom	10'11" x 9'10"	107 sq. ft	Yes
4	Kitchen	8'0" x 12'9"	100 sq. ft	Yes
5	Primary Bedroom	10'6" x 13'3"	139 sq. ft	Yes
6	Bath	7'8" x 5'0"	39 sq. ft	Yes

2329 Channing Way, South Campus, Berkeley, Alameda County, California, United States,

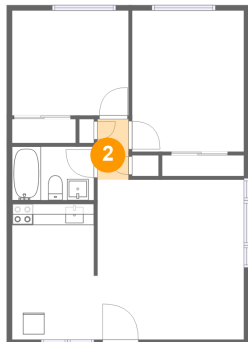
1 Floor 1 - Living Room



Dimensions: 13'9" x 15'0"
Area: 206 sq. ft
Counted as Living Area:
Yes

Heated: Yes
Finished: Yes
Enclosed: Yes
Contiguous:
Yes
Permitted: Yes
Wet Space: No
Addition: No
Conversion: No

2 Floor 1 - Hall

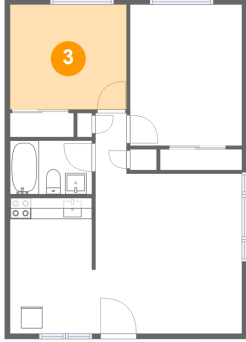


Dimensions: 2'11" x 5'8"
Area: 17 sq. ft
Counted as Living Area:
Yes

Heated: Yes
Finished: Yes
Enclosed: Yes
Contiguous:
Yes
Permitted: Yes
Wet Space: No
Addition: No
Conversion: No

2329 Channing Way, South Campus, Berkeley, Alameda County, California, United States,

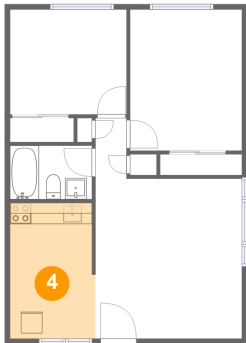
3 Floor 1 - Bedroom



Dimensions: 10'11" x 9'10"
Area: 107 sq. ft
Counted as Living Area:
Yes

Heated: Yes
Finished: Yes
Enclosed: Yes
Contiguous:
Yes
Permitted: Yes
Wet Space: No
Addition: No
Conversion: No

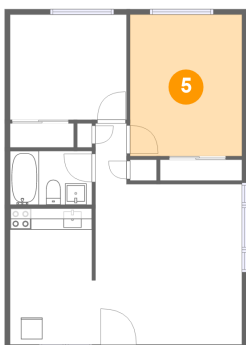
4 Floor 1 - Kitchen



Dimensions: 8'0" x 12'9"
Area: 100 sq. ft
Counted as Living Area:
Yes

Heated: Yes
Finished: Yes
Enclosed: Yes
Contiguous:
Yes
Permitted: Yes
Wet Space: No
Addition: No
Conversion: No

5 Floor 1 - Primary Bedroom

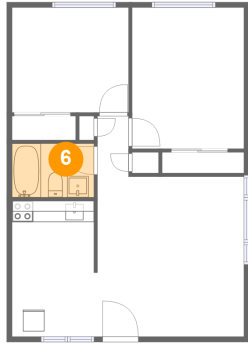


Dimensions: 10'6" x 13'3"
Area: 139 sq. ft
Counted as Living Area:
Yes

Heated: Yes
Finished: Yes
Enclosed: Yes
Contiguous:
Yes
Permitted: Yes
Wet Space: No
Addition: No
Conversion: No

**2329 Channing Way, South Campus, Berkeley,
Alameda County, California, United States,**

6 Floor 1 - Bath



Dimensions: 7'8" x 5'0"
Area: 39 sq. ft
Counted as Living Area:
Yes

Heated: Yes
Finished: Yes
Enclosed: Yes
Contiguous:
Yes
Permitted: Yes
Wet Space: Yes
Addition: No
Conversion: No