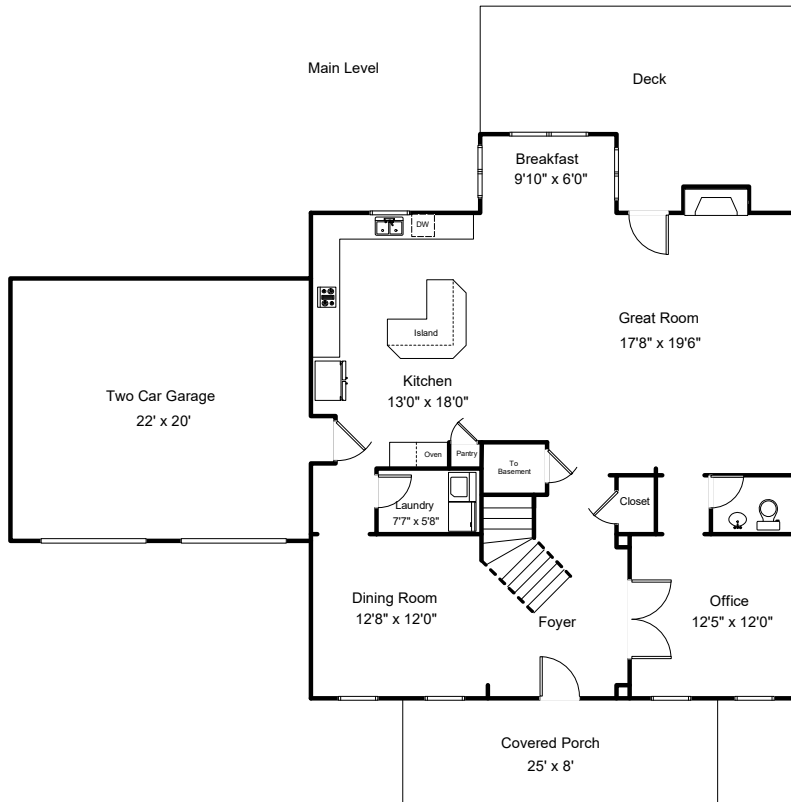


# 927 Derrik's Crossing



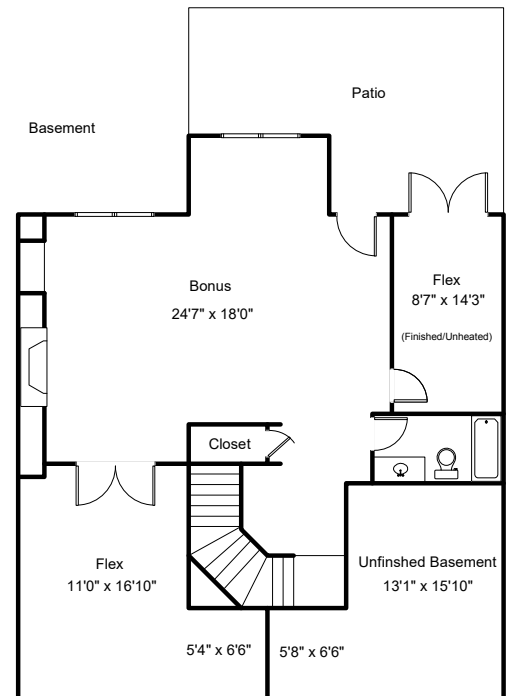
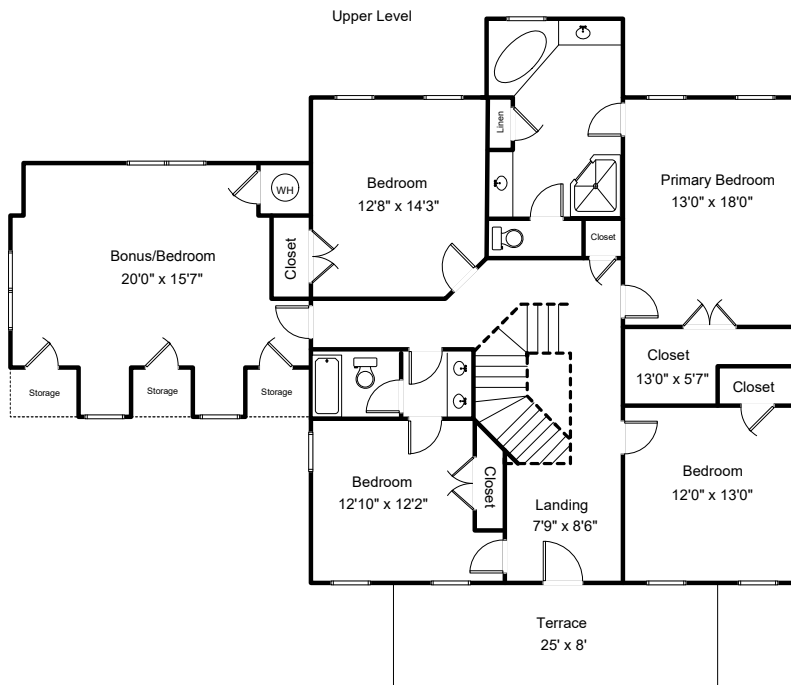
## Total Heated Living Area

Main Level - 1427sf

Upper Level - 1862sf

Finished Basement - 1033sf

Total - 4322sf



Room dimensions are approximate, measured to net livable area. Symbols on sketch (stairs, doors, windows, utilities) are for placement, not to scale. Deck/Porch are approximate dimensions. Sketch is for marketing and informational purposes and is approximate representation of home floor plan.