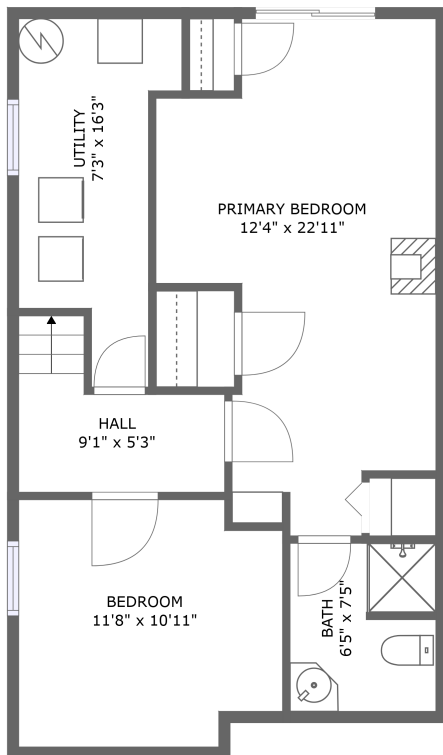
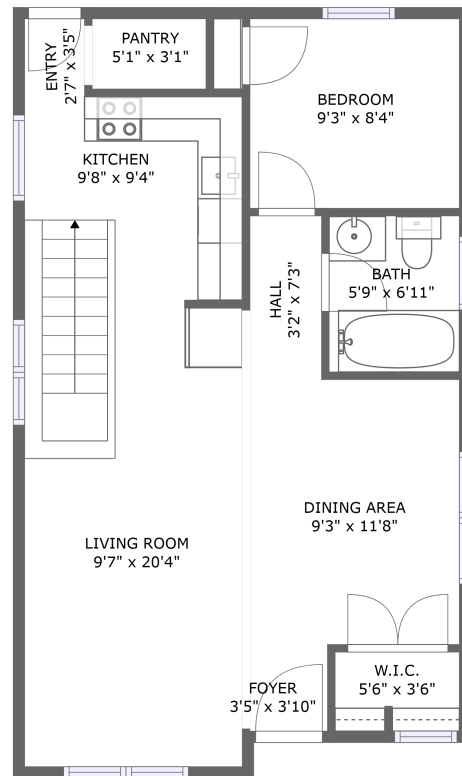


167 Sophia St, Peterborough, ON, CA




FLOOR 1



FLOOR 2

Property summary

 **0** Garages

 **3** Bedrooms

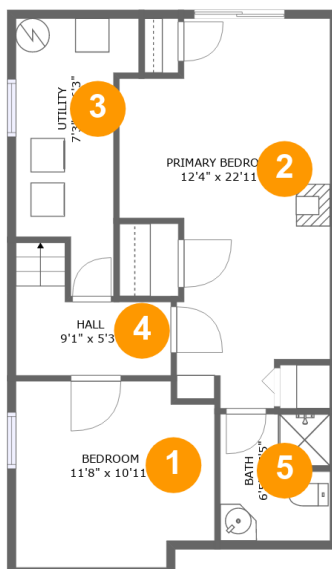
 **2** Bathrooms

 **0** Half baths

 **2** Floors

 **1,203** Gross living area sqft

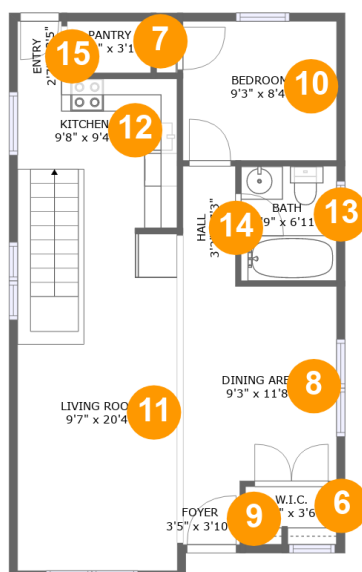
 **1,310** Total sqft

167 Sophia St, Peterborough, ON, CA**Room dimensions**

Floor 1

Total sqft: 634 Living area: 527

#		Dimensions	sqft	Counted as living area
1	Bedroom	11'8" x 10'11"	120 sq. ft	Yes
2	Bedroom	12'4" x 22'11"	219 sq. ft	Yes
3	Utility	7'3" x 16'3"	87 sq. ft	No
4	Hall	9'1" x 5'3"	50 sq. ft	Yes
5	Bath	6'5" x 7'5"	47 sq. ft	Yes

167 Sophia St, Peterborough, ON, CA**Room dimensions**

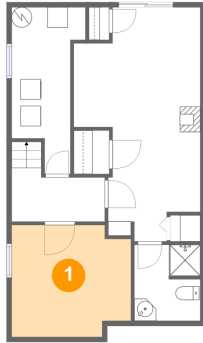
Floor 2

Total sqft: 676 Living area: 676

#		Dimensions	sqft	Counted as living area
6	Cl	5'6" x 3'6"	19 sq. ft	Yes
7	Pantry	5'1" x 3'1"	16 sq. ft	Yes
8	Dining Room	9'3" x 11'8"	109 sq. ft	Yes
9	Entry	3'5" x 3'10"	13 sq. ft	Yes
10	Bedroom	9'3" x 8'4"	78 sq. ft	Yes
11	Living Room	9'7" x 20'4"	196 sq. ft	Yes
12	Kitchen	9'8" x 9'4"	89 sq. ft	Yes
13	Bath	5'9" x 6'11"	40 sq. ft	Yes
14	Hall	3'2" x 7'3"	23 sq. ft	Yes
15	Entry	2'7" x 3'5"	9 sq. ft	Yes

167 Sophia St, Peterborough, ON, CA

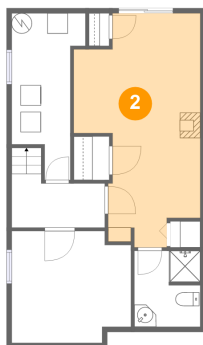
1 Floor 1 - Bedroom



Dimensions: 11'8" x 10'11"
Area: 120 sq. ft
Counted as living area: Yes

Heated: Yes
Finished: Yes
Enclosed: Yes
Contiguous: Yes
Permitted: Yes
Wet space: No
Addition: No
Conversion: No

2 Floor 1 - Bedroom

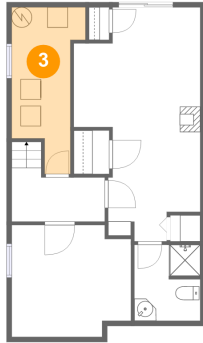


Dimensions: 12'4" x 22'11"
Area: 219 sq. ft
Counted as living area: Yes

Heated: Yes
Finished: Yes
Enclosed: Yes
Contiguous: Yes
Permitted: Yes
Wet space: No
Addition: No
Conversion: No

167 Sophia St, Peterborough, ON, CA

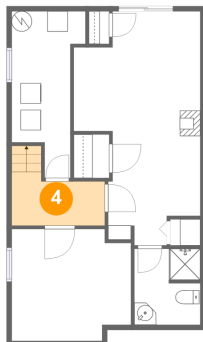
3 Floor 1 - Utility



Dimensions: 7'3" x 16'3"
Area: 87 sq. ft
Counted as living area: No

Heated: Yes
Finished: No
Enclosed: Yes
Contiguous: Yes
Permitted: Yes
Wet space: No
Addition: No
Conversion: No

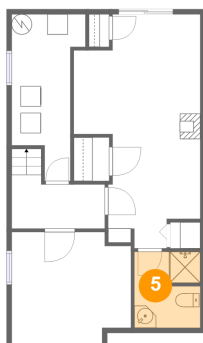
4 Floor 1 - Hall



Dimensions: 9'1" x 5'3"
Area: 50 sq. ft
Counted as living area: Yes

Heated: Yes
Finished: Yes
Enclosed: Yes
Contiguous: Yes
Permitted: Yes
Wet space: No
Addition: No
Conversion: No

5 Floor 1 - Bath

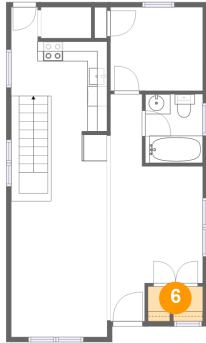


Dimensions: 6'5" x 7'5"
Area: 47 sq. ft
Counted as living area: Yes

Heated: Yes
Finished: Yes
Enclosed: Yes
Contiguous: Yes
Permitted: Yes
Wet space: Yes
Addition: No
Conversion: No

167 Sophia St, Peterborough, ON, CA

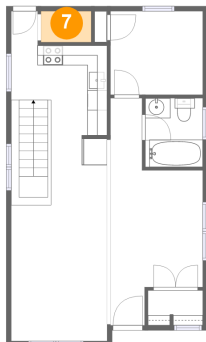
6 Floor 2 - Cl



Dimensions: 5'6" x 3'6"
Area: 19 sq. ft
Counted as living area: Yes

Heated: Yes
Finished: Yes
Enclosed: Yes
Contiguous: Yes
Permitted: Yes
Wet space: No
Addition: No
Conversion: No

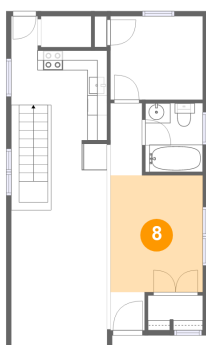
7 Floor 2 - Pantry



Dimensions: 5'1" x 3'1"
Area: 16 sq. ft
Counted as living area: Yes

Heated: Yes
Finished: Yes
Enclosed: Yes
Contiguous: Yes
Permitted: Yes
Wet space: No
Addition: No
Conversion: No

8 Floor 2 - Dining Room

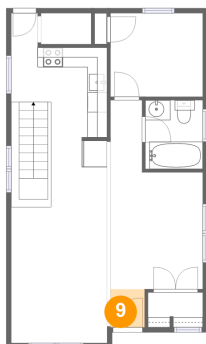


Dimensions: 9'3" x 11'8"
Area: 109 sq. ft
Counted as living area: Yes

Heated: Yes
Finished: Yes
Enclosed: Yes
Contiguous: Yes
Permitted: Yes
Wet space: No
Addition: No
Conversion: No

167 Sophia St, Peterborough, ON, CA

9 Floor 2 - Entry



Dimensions: 3'5" x 3'10"
Area: 13 sq. ft
Counted as living area: Yes

Heated: Yes
Finished: Yes
Enclosed: Yes
Contiguous: Yes
Permitted: Yes
Wet space: No
Addition: No
Conversion: No

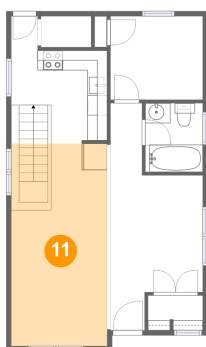
10 Floor 2 - Bedroom



Dimensions: 9'3" x 8'4"
Area: 78 sq. ft
Counted as living area: Yes

Heated: Yes
Finished: Yes
Enclosed: Yes
Contiguous: Yes
Permitted: Yes
Wet space: No
Addition: No
Conversion: No

11 Floor 2 - Living Room

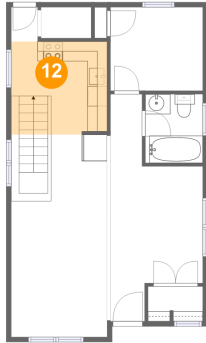


Dimensions: 9'7" x 20'4"
Area: 196 sq. ft
Counted as living area: Yes

Heated: Yes
Finished: Yes
Enclosed: Yes
Contiguous: Yes
Permitted: Yes
Wet space: No
Addition: No
Conversion: No

167 Sophia St, Peterborough, ON, CA

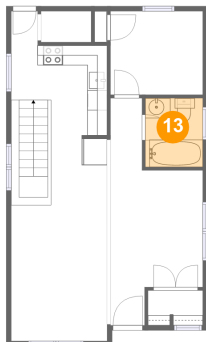
12 Floor 2 - Kitchen



Dimensions: 9'8" x 9'4"
Area: 89 sq. ft
Counted as living area: Yes

Heated: Yes
Finished: Yes
Enclosed: Yes
Contiguous: Yes
Permitted: Yes
Wet space: No
Addition: No
Conversion: No

13 Floor 2 - Bath



Dimensions: 5'9" x 6'11"
Area: 40 sq. ft
Counted as living area: Yes

Heated: Yes
Finished: Yes
Enclosed: Yes
Contiguous: Yes
Permitted: Yes
Wet space: Yes
Addition: No
Conversion: No

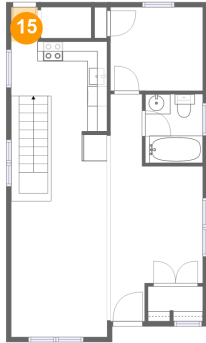
14 Floor 2 - Hall



Dimensions: 3'2" x 7'3"
Area: 23 sq. ft
Counted as living area: Yes

Heated: Yes
Finished: Yes
Enclosed: Yes
Contiguous: Yes
Permitted: Yes
Wet space: No
Addition: No
Conversion: No

15 Floor 2 - Entry



Dimensions: 2'7" x 3'5"
Area: 9 sq. ft
Counted as living area: Yes

Heated: Yes
Finished: Yes
Enclosed: Yes
Contiguous: Yes
Permitted: Yes
Wet space: No
Addition: No
Conversion: No