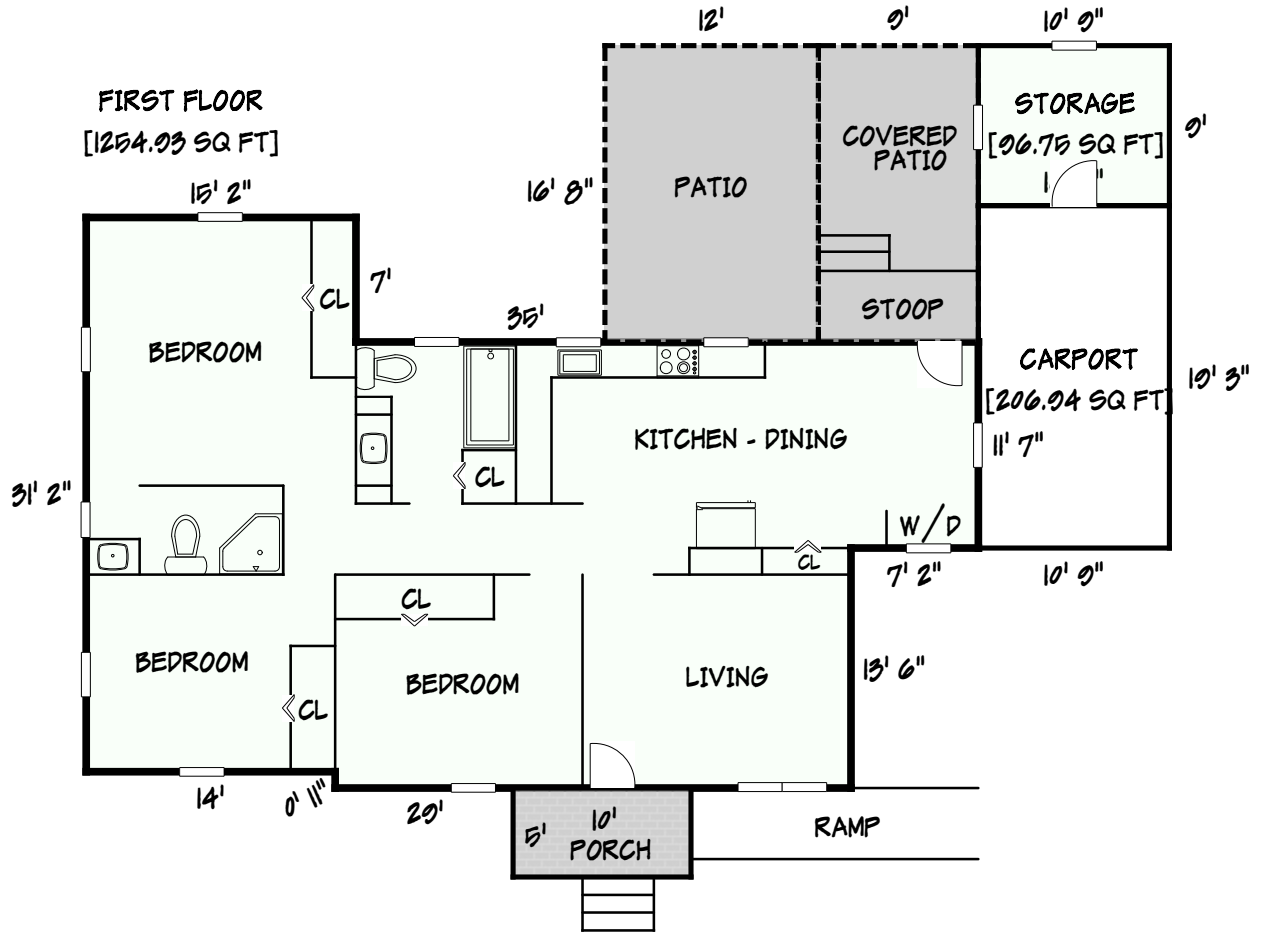
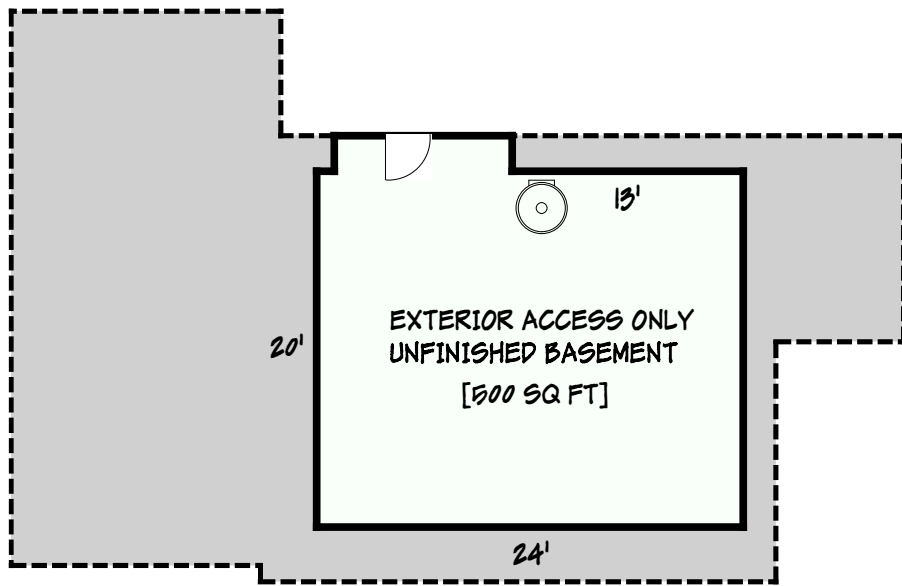


FIRST FLOOR
[1254.03 SQ FT]





Area Calculations Summary

Living Area		Calculation Details	
First Floor	1254.93 Sq ft	$11.58 \times 7.17 = 83.01$ $25.08 \times 27.83 = 698.15$ $1.17 \times 0.92 = 1.07$ $15.17 \times 31.17 = 472.7$	
Total Living Area (Rounded):		1255 Sq ft	
Non-living Area			
Carport	206.94 Sq ft	$10.75 \times 7.67 = 82.42$ $11.58 \times 10.75 = 124.52$ $0.5 \times 11.58 \times 0 = 0$	
Porch	50 Sq ft	$10 \times 5 = 50$	
Patio	150 Sq ft	$16.67 \times 9 = 150$	
Patio	200 Sq ft	$16.67 \times 12 = 200$	
Storage	96.75 Sq ft	$10.75 \times 9 = 96.75$	
Unfinished Basement	500 Sq ft	$24 \times 20 = 480$ $2 \times 10 = 20$	