



Home report


1092 Chesdin Road,Forest,Virginia,United States




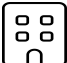
Property summary


**1** Garages


**5** Bedrooms

**4** Bathrooms

**1** Half baths

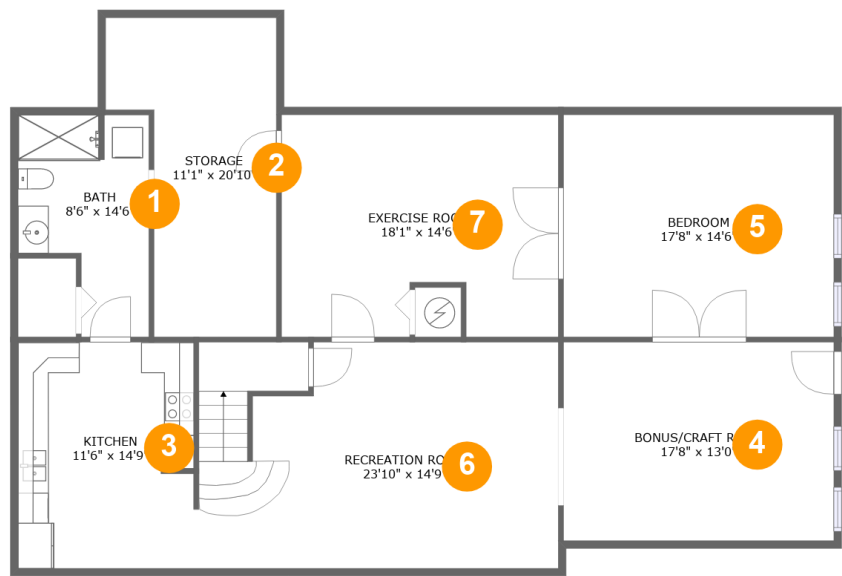
**3** Floors

**4,426** Gross living area sqft

**5,792** Total sqft

Home report

1092 Chesdin Road,Forest,Virginia,United States



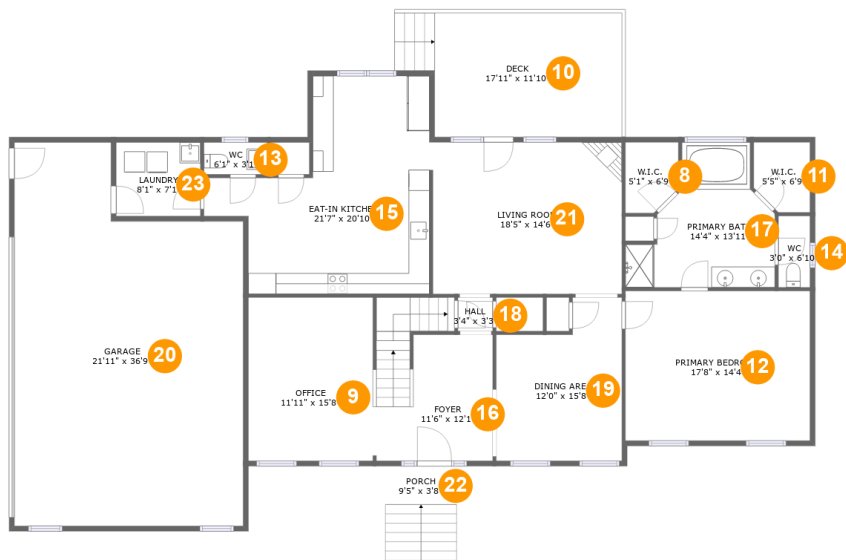
Room dimensions

Floor 1 Total sqft: 1710 Living area: 1512

#		Dimensions	sqft	Counted as living area
1	Bath	8'6" x 14'6"	101 sq. ft	Yes
2	Storage	11'1" x 20'10"	186 sq. ft	No
3	Kitchen	11'6" x 14'9"	169 sq. ft	Yes
4	BONUS/CRAFT Room	17'8" x 13'0"	229 sq. ft	Yes
5	Bedroom	17'8" x 14'6"	257 sq. ft	Yes
6	Recreation Room	23'10" x 14'9"	345 sq. ft	Yes
7	Exercise Room	18'1" x 14'6"	250 sq. ft	Yes

Home report

1092 Chesdin Road,Forest,Virginia,United States



Room dimensions

Floor 2 Total sqft: 2923 Living area: 1871

#		Dimensions	sqft	Counted as living area
8	W.I.C.	5'1" x 6'9"	32 sq. ft	Yes
9	Office	11'11" x 15'8"	187 sq. ft	Yes
10	Deck	17'11" x 11'10"	234 sq. ft	No
11	W.I.C.	5'5" x 6'9"	33 sq. ft	Yes
12	Primary Bedroom	17'8" x 14'4"	254 sq. ft	Yes
13	WC	6'1" x 3'1"	19 sq. ft	Yes
14	WC	3'0" x 6'10"	21 sq. ft	Yes
15	Eat-in Kitchen	21'7" x 20'10"	317 sq. ft	Yes
16	Foyer	11'6" x 12'1"	162 sq. ft	Yes
17	Primary Bath	14'4" x 13'11"	142 sq. ft	Yes
18	Hall	3'4" x 3'3"	11 sq. ft	Yes

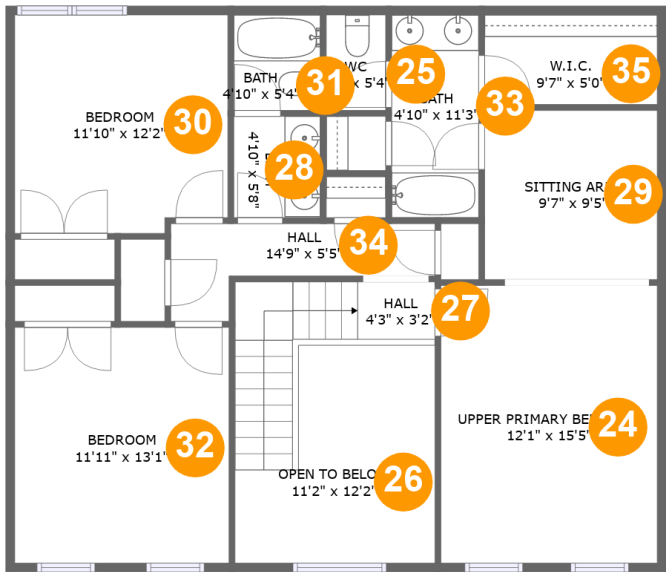
Home report

1092 Chesdin Road,Forest,Virginia,United States

#		Dimensions	sqft	Counted as living area
19	Dining Area	12'0" x 15'8"	162 sq. ft	Yes
20	Garage	21'11" x 36'9"	709 sq. ft	No
21	Living Room	18'5" x 14'6"	264 sq. ft	Yes
22	Porch	9'5" x 3'8"	71 sq. ft	No
23	Laundry	8'1" x 7'1"	57 sq. ft	Yes

Home report

1092 Chesdin Road,Forest,Virginia,United States



Room dimensions

Floor 3 Total sqft: 1159 Living area: 1043

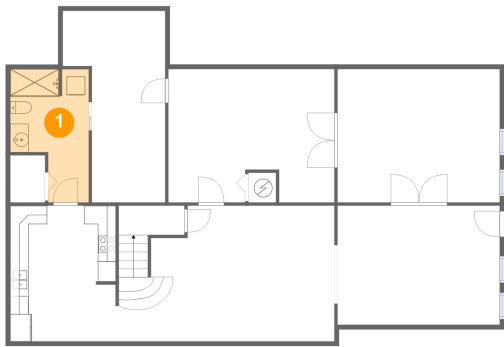
#		Dimensions	sqft	Counted as living area
24	Upper Primary Bedroom	12'1" x 15'5"	186 sq. ft	Yes
25	WC	3'4" x 5'4"	18 sq. ft	Yes
26	Open To Below	11'2" x 12'2"	111 sq. ft	No
27	Hall	4'3" x 3'2"	64 sq. ft	Yes
28	Bath	4'10" x 5'8"	27 sq. ft	Yes
29	Sitting Area	9'7" x 9'5"	90 sq. ft	Yes
30	Bedroom	11'10" x 12'2"	141 sq. ft	Yes
31	Bath	4'10" x 5'4"	26 sq. ft	Yes
32	Bedroom	11'11" x 13'1"	157 sq. ft	Yes
33	Bath	4'10" x 11'3"	55 sq. ft	Yes

Home report

1092 Chesdin Road,Forest,Virginia,United States

#		Dimensions	sqft	Counted as living area
34	Hall	14'9" x 5'5"	51 sq. ft	Yes
35	W.I.C.	9'7" x 5'0"	48 sq. ft	Yes

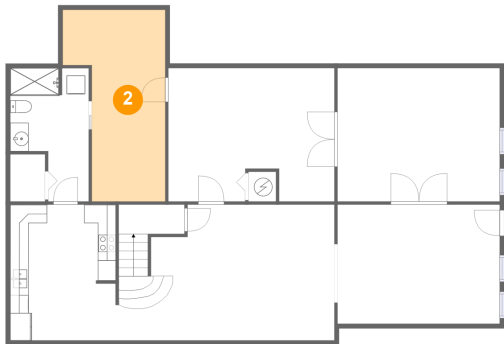
1 Floor 1 - Bath



Dimensions: 8'6" x 14'6"
Area: 101 sq. ft
Counted as living area: Yes

Heated: Yes
Finished: Yes
Enclosed: Yes
Contiguous: Yes
Permitted: Yes
Wet space: Yes
Addition: No
Conversion: No

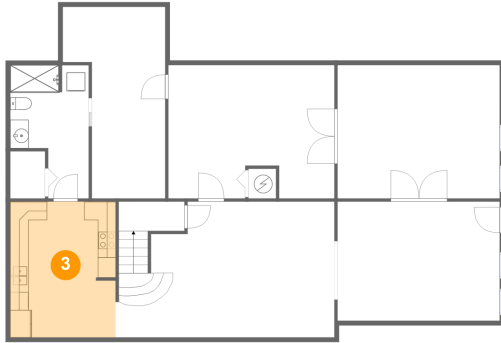
2 Floor 1 - Storage



Dimensions: 11'1" x 20'10"
Area: 186 sq. ft
Counted as living area: No

Heated: No
Finished: No
Enclosed: No
Contiguous: Yes
Permitted: Yes
Wet space: No
Addition: No
Conversion: No

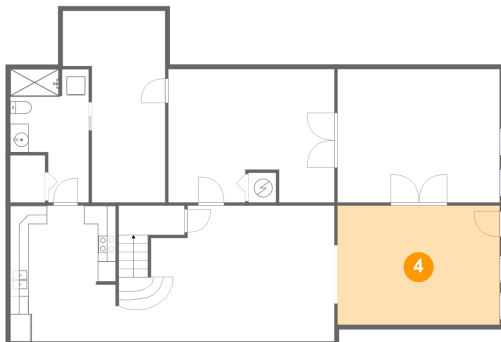
3 Floor 1 - Kitchen



Dimensions: 11'6" x 14'9"
Area: 169 sq. ft
Counted as living area: Yes

Heated: Yes
Finished: Yes
Enclosed: Yes
Contiguous: Yes
Permitted: Yes
Wet space: No
Addition: No
Conversion: No

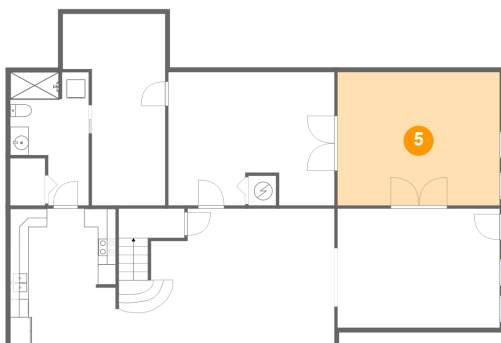
4 Floor 1 - BONUS/CRAFT Room



Dimensions: 17'8" x 13'0"
Area: 229 sq. ft
Counted as living area: Yes

Heated: Yes
Finished: Yes
Enclosed: Yes
Contiguous: Yes
Permitted: Yes
Wet space: No
Addition: No
Conversion: No

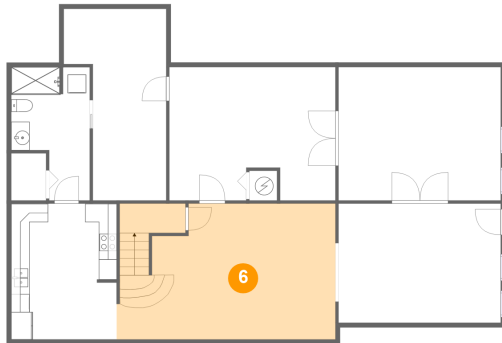
5 Floor 1 - Bedroom



Dimensions: 17'8" x 14'6"
Area: 257 sq. ft
Counted as living area: Yes

Heated: Yes
Finished: Yes
Enclosed: Yes
Contiguous: Yes
Permitted: Yes
Wet space: No
Addition: No
Conversion: No

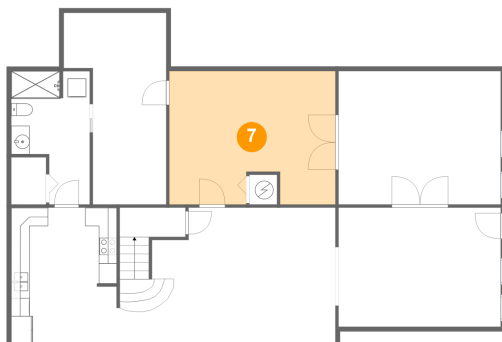
6 Floor 1 - Recreation Room



Dimensions: 23'10" x 14'9"
Area: 345 sq. ft
Counted as living area: Yes

Heated: Yes
Finished: Yes
Enclosed: Yes
Contiguous: Yes
Permitted: Yes
Wet space: No
Addition: No
Conversion: No

7 Floor 1 - Exercise Room



Dimensions: 18'1" x 14'6"
Area: 250 sq. ft
Counted as living area: Yes

Heated: Yes
Finished: Yes
Enclosed: Yes
Contiguous: Yes
Permitted: Yes
Wet space: No
Addition: No
Conversion: No

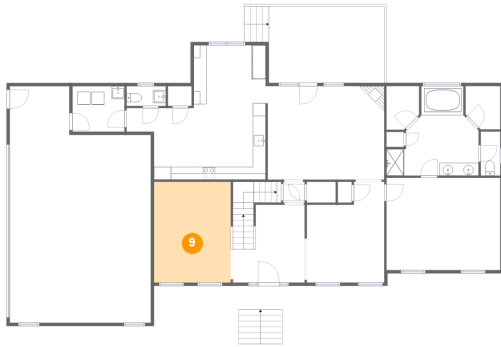
8 Floor 2 - W.I.C.



Dimensions: 5'1" x 6'9"
Area: 32 sq. ft
Counted as living area: Yes

Heated: Yes
Finished: Yes
Enclosed: Yes
Contiguous: Yes
Permitted: Yes
Wet space: No
Addition: No
Conversion: No

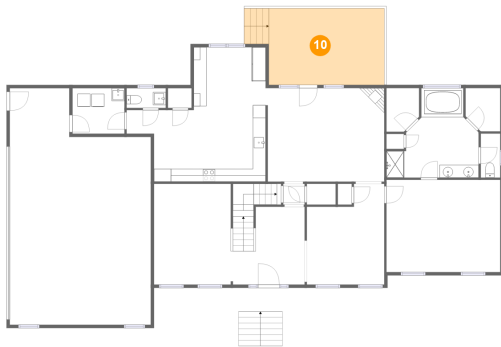
9 Floor 2 - Office



Dimensions: 11'11" x 15'8"
Area: 187 sq. ft
Counted as living area: Yes

Heated: Yes
Finished: Yes
Enclosed: Yes
Contiguous: Yes
Permitted: Yes
Wet space: No
Addition: No
Conversion: No

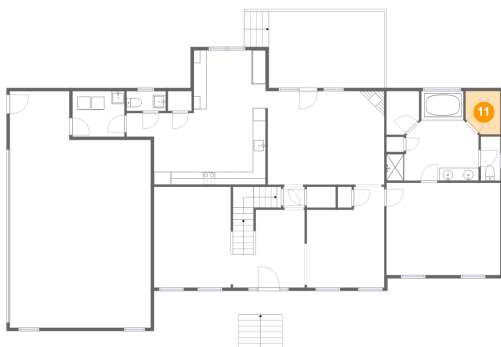
10 Floor 2 - Deck



Dimensions: 17'11" x 11'10"
Area: 234 sq. ft
Counted as living area: No

Heated: No
Finished: Yes
Enclosed: No
Contiguous: Yes
Permitted: Yes
Wet space: No
Addition: No
Conversion: No

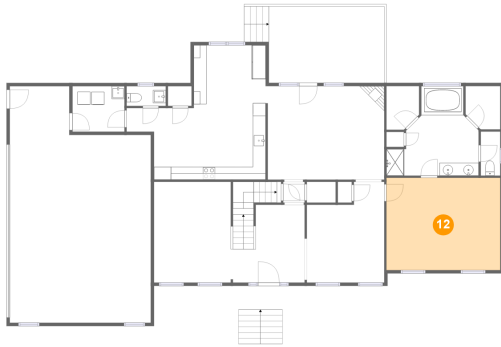
11 Floor 2 - W.I.C.



Dimensions: 5'5" x 6'9"
Area: 33 sq. ft
Counted as living area: Yes

Heated: Yes
Finished: Yes
Enclosed: Yes
Contiguous: Yes
Permitted: Yes
Wet space: No
Addition: No
Conversion: No

12 Floor 2 - Primary Bedroom



Dimensions: 17'8" x 14'4"
Area: 254 sq. ft
Counted as living area: Yes

Heated: Yes
Finished: Yes
Enclosed: Yes
Contiguous: Yes
Permitted: Yes
Wet space: No
Addition: No
Conversion: No

13 Floor 2 - WC



Dimensions: 6'1" x 3'1"
Area: 19 sq. ft
Counted as living area: Yes

Heated: Yes
Finished: Yes
Enclosed: Yes
Contiguous: Yes
Permitted: Yes
Wet space: Yes
Addition: No
Conversion: No

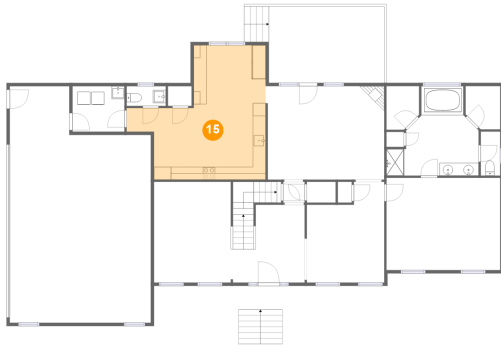
14 Floor 2 - WC



Dimensions: 3'0" x 6'10"
Area: 21 sq. ft
Counted as living area: Yes

Heated: Yes
Finished: Yes
Enclosed: Yes
Contiguous: Yes
Permitted: Yes
Wet space: Yes
Addition: No
Conversion: No

15 Floor 2 - Eat-in Kitchen



Dimensions: 21'7" x 20'10"
Area: 317 sq. ft
Counted as living area: Yes

Heated: Yes
Finished: Yes
Enclosed: Yes
Contiguous: Yes
Permitted: Yes
Wet space: No
Addition: No
Conversion: No

16 Floor 2 - Foyer



Dimensions: 11'6" x 12'1"
Area: 162 sq. ft
Counted as living area: Yes

Heated: Yes
Finished: Yes
Enclosed: Yes
Contiguous: Yes
Permitted: Yes
Wet space: No
Addition: No
Conversion: No

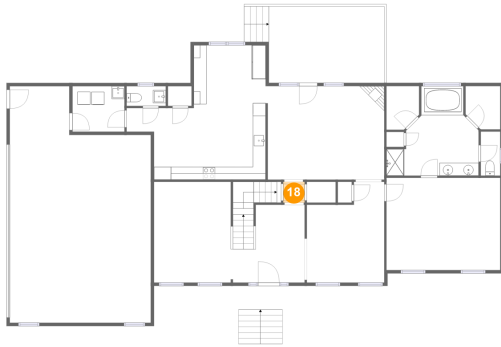
17 Floor 2 - Primary Bath



Dimensions: 14'4" x 13'11"
Area: 142 sq. ft
Counted as living area: Yes

Heated: Yes
Finished: Yes
Enclosed: Yes
Contiguous: Yes
Permitted: Yes
Wet space: Yes
Addition: No
Conversion: No

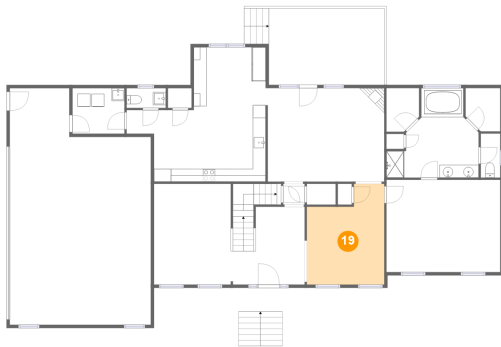
18 Floor 2 - Hall



Dimensions: 3'4" x 3'3"
Area: 11 sq. ft
Counted as living area: Yes

Heated: Yes
Finished: Yes
Enclosed: Yes
Contiguous: Yes
Permitted: Yes
Wet space: No
Addition: No
Conversion: No

19 Floor 2 - Dining Area



Dimensions: 12'0" x 15'8"
Area: 162 sq. ft
Counted as living area: Yes

Heated: Yes
Finished: Yes
Enclosed: Yes
Contiguous: Yes
Permitted: Yes
Wet space: No
Addition: No
Conversion: No

20 Floor 2 - Garage



Dimensions: 21'11" x 36'9"
Area: 709 sq. ft
Counted as living area: No

Heated: No
Finished: No
Enclosed: Yes
Contiguous: Yes
Permitted: Yes
Wet space: No
Addition: No
Conversion: No

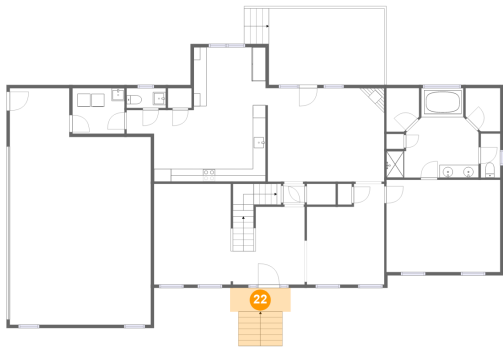
21 Floor 2 - Living Room



Dimensions: 18'5" x 14'6"
Area: 264 sq. ft
Counted as living area: Yes

Heated: Yes
Finished: Yes
Enclosed: Yes
Contiguous: Yes
Permitted: Yes
Wet space: No
Addition: No
Conversion: No

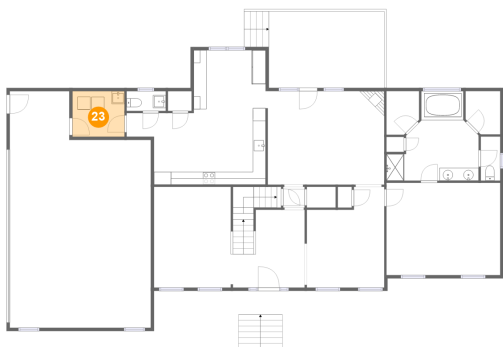
22 Floor 2 - Porch



Dimensions: 9'5" x 3'8"
Area: 71 sq. ft
Counted as living area: No

Heated: No
Finished: Yes
Enclosed: No
Contiguous: Yes
Permitted: Yes
Wet space: No
Addition: No
Conversion: No

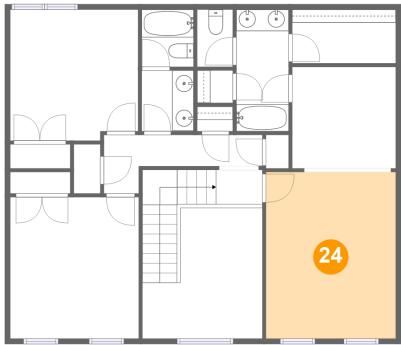
23 Floor 2 - Laundry



Dimensions: 8'1" x 7'1"
Area: 57 sq. ft
Counted as living area: Yes

Heated: Yes
Finished: Yes
Enclosed: Yes
Contiguous: Yes
Permitted: Yes
Wet space: No
Addition: No
Conversion: No

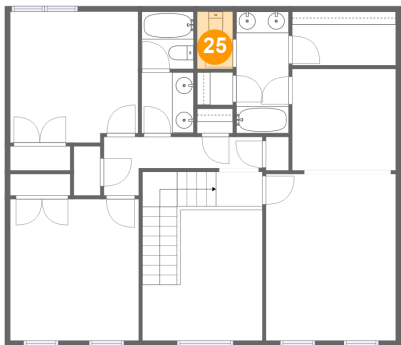
24 Floor 3 - Upper Primary Bedroom



Dimensions: 12'1" x 15'5"
Area: 186 sq. ft
Counted as living area: Yes

Heated: Yes
Finished: Yes
Enclosed: Yes
Contiguous: Yes
Permitted: Yes
Wet space: No
Addition: No
Conversion: No

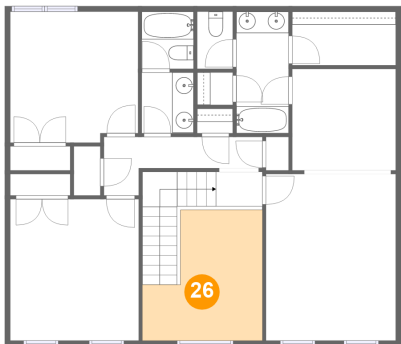
25 Floor 3 - WC



Dimensions: 3'4" x 5'4"
Area: 18 sq. ft
Counted as living area: Yes

Heated: Yes
Finished: Yes
Enclosed: Yes
Contiguous: Yes
Permitted: Yes
Wet space: Yes
Addition: No
Conversion: No

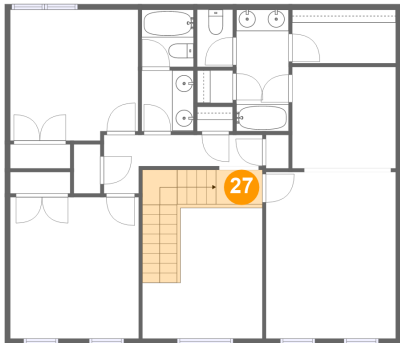
26 Floor 3 - Open To Below



Dimensions: 11'2" x 12'2"
Area: 111 sq. ft
Counted as living area: No

Heated: No
Finished: No
Enclosed: No
Contiguous: Yes
Permitted: No
Wet space: No
Addition: No
Conversion: No

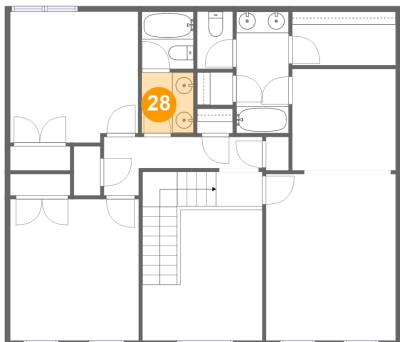
27 Floor 3 - Hall



Dimensions: 4'3" x 3'2"
Area: 64 sq. ft
Counted as living area: Yes

Heated: Yes
Finished: Yes
Enclosed: Yes
Contiguous: Yes
Permitted: Yes
Wet space: No
Addition: No
Conversion: No

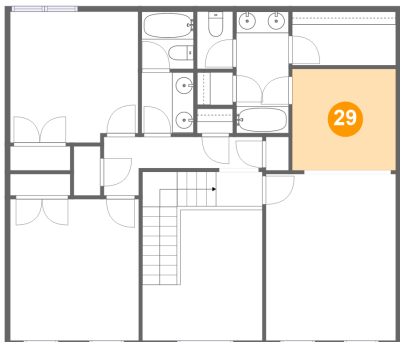
28 Floor 3 - Bath



Dimensions: 4'10" x 5'8"
Area: 27 sq. ft
Counted as living area: Yes

Heated: Yes
Finished: Yes
Enclosed: Yes
Contiguous: Yes
Permitted: Yes
Wet space: Yes
Addition: No
Conversion: No

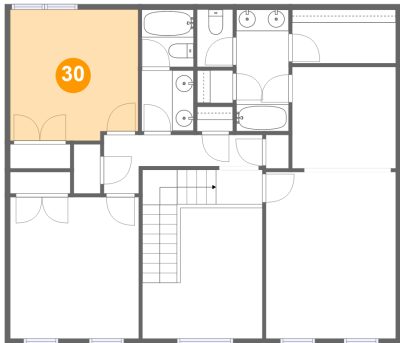
29 Floor 3 - Sitting Area



Dimensions: 9'7" x 9'5"
Area: 90 sq. ft
Counted as living area: Yes

Heated: Yes
Finished: Yes
Enclosed: Yes
Contiguous: Yes
Permitted: Yes
Wet space: No
Addition: No
Conversion: No

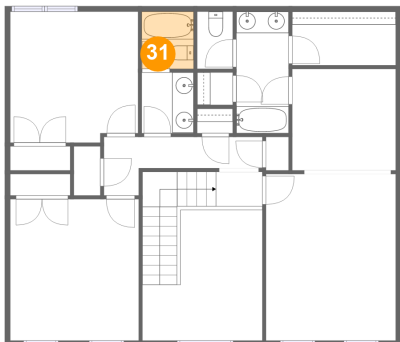
30 Floor 3 - Bedroom



Dimensions: 11'10" x 12'2"
Area: 141 sq. ft
Counted as living area: Yes

Heated: Yes
Finished: Yes
Enclosed: Yes
Contiguous: Yes
Permitted: Yes
Wet space: No
Addition: No
Conversion: No

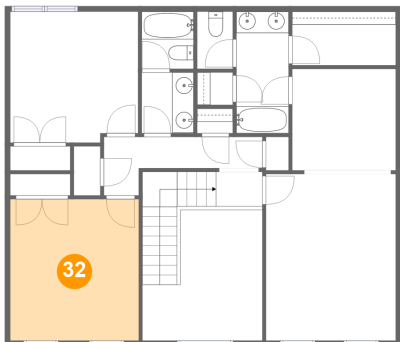
31 Floor 3 - Bath



Dimensions: 4'10" x 5'4"
Area: 26 sq. ft
Counted as living area: Yes

Heated: Yes
Finished: Yes
Enclosed: Yes
Contiguous: Yes
Permitted: Yes
Wet space: Yes
Addition: No
Conversion: No

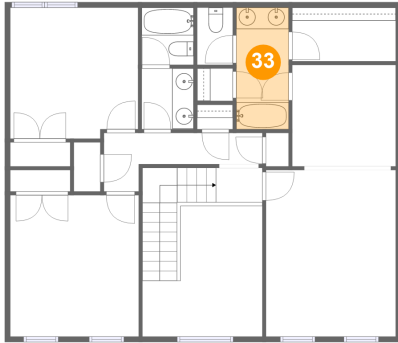
32 Floor 3 - Bedroom



Dimensions: 11'11" x 13'1"
Area: 157 sq. ft
Counted as living area: Yes

Heated: Yes
Finished: Yes
Enclosed: Yes
Contiguous: Yes
Permitted: Yes
Wet space: No
Addition: No
Conversion: No

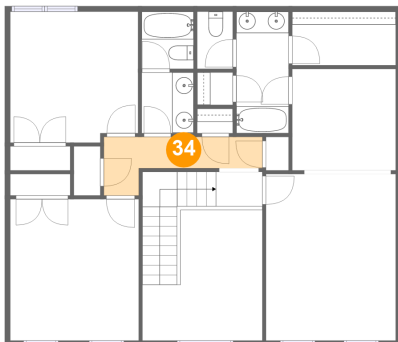
33 Floor 3 - Bath



Dimensions: 4'10" x 11'3"
Area: 55 sq. ft
Counted as living area: Yes

Heated: Yes
Finished: Yes
Enclosed: Yes
Contiguous: Yes
Permitted: Yes
Wet space: Yes
Addition: No
Conversion: No

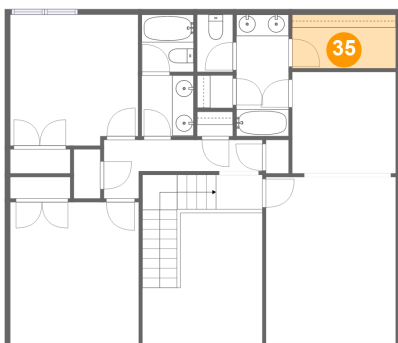
34 Floor 3 - Hall



Dimensions: 14'9" x 5'5"
Area: 51 sq. ft
Counted as living area: Yes

Heated: Yes
Finished: Yes
Enclosed: Yes
Contiguous: Yes
Permitted: Yes
Wet space: No
Addition: No
Conversion: No

35 Floor 3 - W.I.C.



Dimensions: 9'7" x 5'0"
Area: 48 sq. ft
Counted as living area: Yes

Heated: Yes
Finished: Yes
Enclosed: Yes
Contiguous: Yes
Permitted: Yes
Wet space: No
Addition: No
Conversion: No